

Paper weight-110# (minimum)

Black nonfading ink required

U.S. PUBLIC LAND SURVEY MONUMENT RECORD

For Public Land Survey Corners In:
T. 4 N. R. 11 E. 4th P.M.
CORNER CODE INDEX

WI ADMINISTRATIVE CODE A-E 7.08 REQUIREMENT
REV 10/23/2004 USMONREC.DWG

PORTER TWP
ROCK COUNTY WI

IF AVAILABLE
ROCK COUNTY COORDINATES PREFERRED

A	1	2	3	4	5	6	7	8	9	10	11	12	13	14	15	16	17	18	19	20	21	22	23	24	25	A
B		6					5				4				3			2				1				B
C																										C
D																										D
E																										E
F																										F
G																										G
H																										H
J																										J
K																										K
L																										L
M																										M
N																										N
O																										O
P																										P
Q																										Q
R																										R
S																										S
T																										T
U																										U
V																										V
W																										W
X																										X
Y																										Y
Z																										Z

North _____ Elev. _____
 East _____
 Hor. Datum _____ Vert. Datum _____
 LATITUDE _____ ELLIPS. HT. _____
 LONGITUDE _____
 NAD83(91) _____ NETWORK ADJ. YR _____
 GPS (X) _____ TRAVERSE (X) _____
 BASED ON THE FOLLOWING CONTROL:

PLACE MONUMENT SYMBOL AT PROPER LOCATION ON ABOVE INDEX

CORNER MONUMENT WITNESS MONUMENT

BEARINGS ARE BASED ON: _____

FIELD BOOK _____ PAGE # _____

SHEET 1 OF 3

SHOW A PLAN VIEW DRAWING DEPICTING THE CORNER MONUMENT AND SURROUNDING PHYSICAL FEATURES, INCLUDING THE EXCAVATION AREA AND DEPTH.

PLANNING & ZONING COMMITTEE ADOPTED THIS FORM ON 12/2/1982

CORNER CODE F-7

PD4595 CEN29PORTER

(B) Describe any record evidence, monument evidence, occupational evidence, testimonial evidence or any other material evidence you considered, and whether the monument was found or placed.

- 1871 RUGER VOL 2 PG 68 DROVE STAKE DEEP & SURROUNDED WITH 3 HH. PUT HH 15X10X6 ON TOP. VAR 7-28 2661.78 TO E 1/4 COR, VAR 7-28 2652.87 TO W 1/4 COR, VAR 7-28 2645.94 TO N 1/4 COR, & VAR 7-28 2668.05 TO S 1/4 COR
- 1973 LEE VOL 4 PG 596 DUG & FD NOTHING
- 1976 BARNES VOL 5 PG 207 DUG & FD NOTHING
- 1978 PHILLIPSON GSM VOL 8 PG 33 PK, N89-54-01W 1322.84 TO 3/8" REROD @ 1/16TH COR & NO-10-19W TO MON IN BOX @ N 1/4 COR SEC 29.
- 1979 BARNES VOL 5 PG 567 SET NOTHING. COMPUTED A POSSIBLE LOCATION AS CENTER. N2-44-00W 2648.87 TO CI @ N1/4 COR, S2-44-00E 2673.91 TO ALUM @ S 1/4 COR, N87-14-04E 1332.81 TO FD PIPE, S87-14-04W 1326.79 TO FD PIPE.
- 1979 BARNES FB#2 PG 1&2 FD R/R NEAR CEN. 2653.88 TO W 1/4 COR
- 1979 COMBS GSM VOL 9 PG 39 SET R/R SPIKE. CREATED 4 LOTS IN SW 1/4. S89-59-30W 2653.81 TO W 1/4 COR. ANGLE 90-00-30 @ CEN FROM N/S 1/4 LINE TO THE SOUTH & LINE TO THE W 1/4 COR
- 1993 SCHROEDER GSM VOL 16 PG 277 STATES NOTHING ABOUT MON

I ALSO USED MY 1979 OBSERVATIONS. IN MY 1979 VOL 5 PG 567 BEARINGS AND DISTANCES FROM TO THE COMPUTED CENTER OF SEC IS NOT THE FD R/R SPIKE OR THE ACTUAL CENTER OF SECTION. FROM THE FOLLOWING BEARINGS AND DISTANCES ARE FROM THE FD R/R SPIKE THAT COMBS PROBABLY PLACED:

TO	W 1/4 COR SEC 29	S89-31-15W 2653.88
	1/16TH COR	S89-33-57W 1325.82
	1/16TH COR	N89-21-17E 1333.82
	N 1/4 COR SEC 29	NO-32-01W 2651.51
	S 1/4 COR SEC 29	SO-31-46E 2671.48
	E 1/4 COR SEC 29	N89-23-33E 2665.78

THE FOLLOWING CORNERS ARE OFF A LINE BETWEEN THE E 1/4 & W 1/4 CORNERS OF SEC 29

S 1/16TH COR OF NW 1/4 SEC 29	SOUTH 0.45
S 1/16TH COR OF NE 1/4 SEC 29	SOUTH 0.61
FD R/R SPIKE	SOUTH 2.98


THE FD R/R SPIKE IS ON A LINE BETWEEN THE N & S 1/4 CORNERS OF SEC 29 & ON LINE WITH THE W 1/4 COR SEC 29 AND THE ERRONEAUS PIPE NEAR THE E 1/4 COR SEC 29

C) Was the corner restored through acceptance of (1) an obliterated evidence location, or, (2) a found perpetuated location?

DID NOT ACCEPT THE R/R SPIKE NOR ESTABLISH THE CENTER OF SEC. THE ELEVATION SURROUNDING THE ROAD INTERSECTION CHANGES GREATLY. HOWEVER, THERE IS A CHANCE RUGER'S STONE WAS MISSED IN PREVIOUS EXCAVATIONS.

I, DONALD BARNES, hereby certify that the corner location as identified by the corner code index was determined by me under my direction and control and that this U.S. Public Land Survey Monument Record is correct and complete to the best of my knowledge and belief.

Seal

Emboss

 4-17-2009

SHEET 1 OF 2

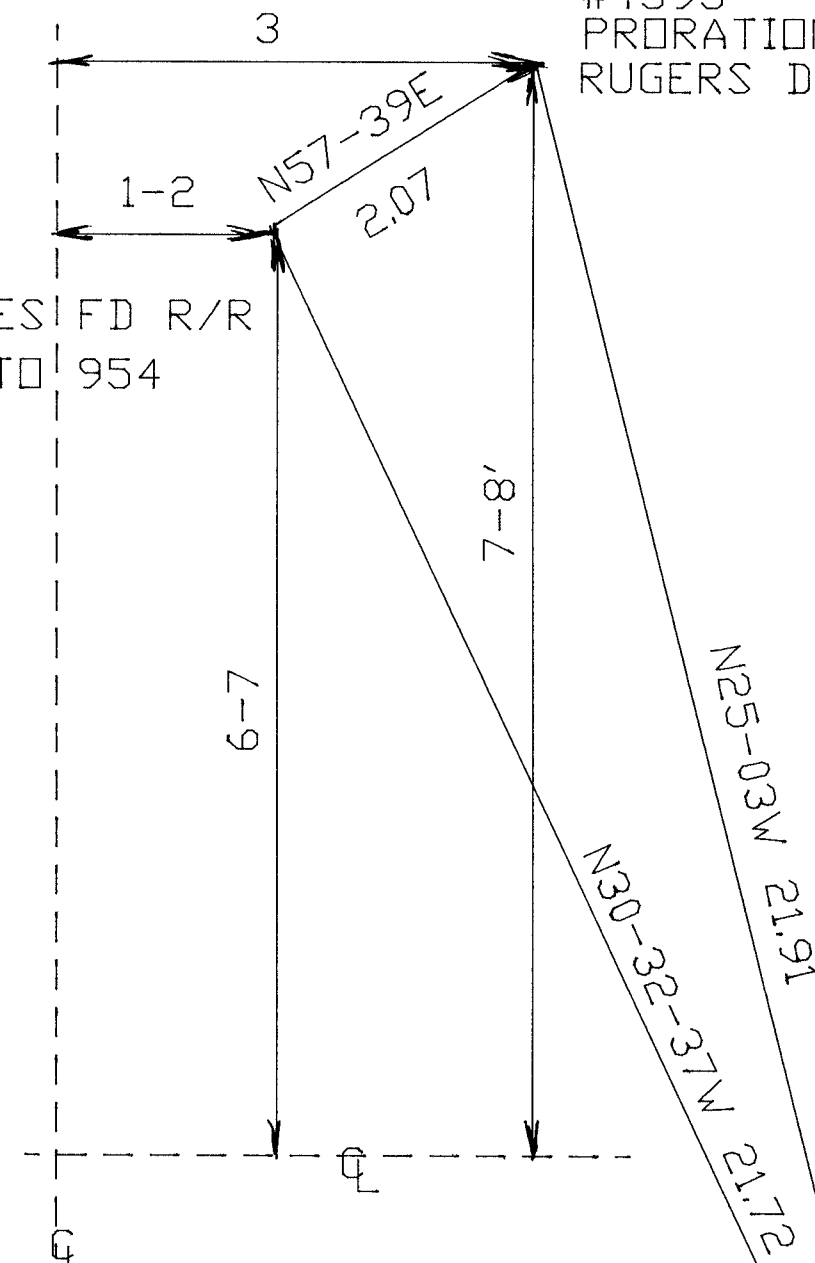
CORNER CODE **T-7**

A.E. 7.08 REQUIREMENT

CENTER OF
SEC 29
PORTER TWP
T4N R11E

WILDER
RD

#4595
PRORATION OF
RUGERS DISTANCES



#834
BARNES FD R/R
PHOTO 954

GIBBS LAKE
RD

DURA NAIL
ON LINE WITH
EAST PVMT EDGE TO
NORTH & SOUTH PVMT
EDGE TO EAST.
PHOTO 953.5

CELL
N44-11-02E 4.730'

Donald Barnes
EMBOSSSED
SEAL

#848
SHEET 2 OF 3 T-7

4-17-2009

6002-7-4
 4-17-2009
 Barnes
 EMBOSSED SEAL

N 1/4 COR

R/R NO-32-02W 2651.53
 MPV 2650.42
 PRD NO-34-18W 2650.44
 RUGER 2645.94

W 1/4 COR

RUGER 5314.66
 N89-27-23E 5319.66

0.47

3.02

1/16TH CDR N89-27-35E 2659.64 #2595

1/16TH CDR

#1595



CEN PRORATED

2.47
 1.38

E 1/4 COR

0.63

1.93

1.94
 RUGER 1330.89 ●
 PRO 1332.12
 MPV 1332.06
 N89-21-13E 1333.83

RUGER 1326.44 ●
 PRO 1327.67
 MPV 1327.58 0.18
 N89-28-35E 1328.06
 N89-34-00E 1325.82

RUGER 1330.89
 PRO 1332.12
 N89-25-45E 1331.95

1/16TH CDR
 #1595

1/16TH CDR
 #2595

R/R NO-31-34W 2671.52
 MPV 2672.57
 PRD NO-29-18W 2672.58
 RUGER 2668.05

RUGER 5313.89
 NO-31-48W 5323.06

SHEET 3 OF 3

SEC 29
 PORTER TWP
 T4N R11E



FD R/R
 #834



S 1/4 COR

4-7