

Paper weight-110# (minimum)

Black nonfading ink required

U.S. PUBLIC LAND SURVEY MONUMENT RECORD

For Public Land Survey Corners In:

WI ADMINISTRATIVE CODE A-E 7.08 REQUIREMENT

T. 4 N. R. 11 E. 4th P.M.

REV 10/23/2004

USMONREC.DWG

CORNER CODE INDEX

A	1	2	3	4	5	6	7	8	9	10	11	12	13	14	15	16	17	18	19	20	21	22	23	24	25	A
B																										B
C																										C
D																										D
E																										E
F																										F
G																										G
H																										H
J																										J
K																										K
L																										L
M																										M
N																										N
O																										O
P																										P
Q																										Q
R																										R
S																										S
T																										T
U																										U
V																										V
W																										W
X																										X
Y																										Y
Z																										Z

PORTER TWP
ROCK COUNTY WI

IF AVAILABLE
ROCK COUNTY COORDINATES PREFERRED

North _____ Elev. _____

East _____

Hor. Datum _____ Vert. Datum _____

LATITUDE _____ ELLIPS. HT. _____

LONGITUDE _____

NAD83(91) _____ NETWORK ADJ. YR _____

GPS (X) _____ TRAVERSE (X) _____

BASED ON THE FOLLOWING CONTROL:

PLACE MONUMENT SYMBOL AT PROPER LOCATION ON ABOVE INDEX

CORNER MONUMENT

WITNESS MONUMENT

BEARINGS ARE BASED ON: _____

FIELD BOOK _____ PAGE # _____

SHEET 1 OF 3

SHOW A PLAN VIEW DRAWING DEPICTING THE CORNER MONUMENT AND SURROUNDING PHYSICAL FEATURES, INCLUDING THE EXCAVATION AREA AND DEPTH.

PLANNING & ZONING COMMITTEE ADOPTED THIS FORM ON 12/2/1982

CORNER CODE T-1

PD 594

W1/4CORSEC30

(B) Describe any record evidence, monument evidence, occupational evidence, testimonial evidence or any other material evidence you considered, and whether the monument was found or placed.

- 1833 (SEP) BRINK & MULLETT T4N R10E VAR 8-15 NORTH ON EAST SIDE OF SECTION 25
2147.64 BUR OAK 12 IN DIAMETER
2640.0 SET QUARTER SECTION POST BUR OAK 14 S69W 120.78'; BLACK OAK 6 N9W 67.32'
4762.56 BUR OAK 10 IN DIAMETER
5280.00 SET POST CORNER SECTIONS 24 & 25 BUR OAK 12 S28W 64.68'; BUR OAK 16N62W 9.24' LAND ROLLING SECOND RATE WHITE BLACK AND BUR OAK
- 1833 ORIG GOV PLAT NW COR SEC 30 PORTER TWP IS 39.60'
NORTH OF NE COR SEC 25 UNION TWP
- 1833 ORIG GOV PLAT NW COR SEC 31 PORTER TWP IS 16.50'
NORTH OF NE COR SEC 36 UNION TWP
- 1865 LOCKE VOL 1 PG 233 E 1/4 COR SEC 25. FD N. B.T. AND OLD STAKE SET STAKE. VAR 7-06 2606.34 TO STAKE 0.66' SOUTH OF BR OAK STUMP 12 INCHES @ CENTER OF SEC 25, VAR 7-0 62605.95' TO W 1/4 COR SEC 25
- 1870 RUGER (SEP) REMONUMENTATION PG 67 SOUTH ON EAST LINE OF NE 1/4 SEC 25 ON A VAR 7-43 AT
2645.28 INTERSECTED QUARTER LINE 8.58' EAST OF QUARTER CORNER. FOUND OLD STAKE AT CORNER. ALSO FOUND NORTH BEARING TREE. COR. VAR 7-32
SOUTH ON EAST LINE OF SE 1/4 SEC 25 ON A VAR 7-35 OFFSET EAST 7.26' AT
2655.51 INTERSECTED SOUTH BOUNDARY LINE 31.68' EAST OF CORNER COR. VAR 7-03'
- 1874 RUGER VOL 2 PG 179 LARGE HH AT COR. MARK ON BOTTOM BOARD OF FENCE BL OAK N14 1/4W 44.72' COR IS 8 INCHES NORTH OF END OF HH. 22.94' NORTH OF STONE MON @ E 1/4 COR SEC 25 UNION TWP.
- 1884 RUGER VOL 2 PG 294 DOES NOT STATE TYPE OF MON. VAR 5-34 1304.82 TO HH 15X12X7 @ S 1/16TH COR OF NE 1/4 SEC 25, VAR 5-34 2609.64 TO HH 16X10X5 @ CENTER OF SEC 25, VAR 5-34 2612.28 TO W 1/4 COR SEC 25.
- 1970 THOM GSM VOL 2 PG 3 FD MON E 1/4 COR SEC 25. 22.94 NORTH OF E 1/4 COR SEC 25 USED PT FOR LINE ONLY.
- 1976 BARNES VOL 5 PG 177 @ CENTER OF SEC 30 FD CONG. NAIL THAT AGREED WITH ACCESSORY CORS. CENTER FD TO BE ON LINE BETWEEN W 1/4 COR & E 1/4 COR. 2574.05 TO CENTER OF SEC 30 & 5232.70 TO E 1/4 COR SEC 30
- 1976 BARNES VOL 5 PG 180 DUG & FD NOTHING FENCE POST AGREED WITH REC DIST. REFERENCED FENCE POST. FD CUT STONE @ E 1/4 COR SEC 25 UNION TWP. W 1/4 COR SEC 30 IS 22.94 NORTH OF CUT STONE. CUT STONE IS ON EAST SIDE OF N/S FENCE & ON LINE WITH E/W FENCE LINE
- 1993 COMBS GSM VOL 16 PG 254 FD STONE MON @ E 1/4 COR SEC 25 UNION TWP. 5229.70 TO W 1/4 COR SEC 25.
- 1994 COMBS PLAT BK 32 PG 211 "GLACIER VALLEY ESTATES" FD 6X6 L.S. MON @ E 1/4 COR SEC 25 UNION TWP. 5229.70 TO LS @ W 1/4 COR SEC 25.
- 1995 COMBS GSM VOL 19 PG 83 E 1/4 COR SEC 25 UNION TWP FD LIMESTONE 5229.70 TO LS @ W 1/4 COR SEC 25.
- 1997 COMBS GSM VOL 20 PG 83 E 1/4 COR SEC 25 UNION TWP FD LIMESTONE 5229.70 TO LS @ W 1/4 COR SEC 25.
- 1997 COMBS PLAT BK 32 PG 347 "GLACIER VALLEY FIRST ADD" FD 6X6 L.S. MON @ E 1/4 COR SEC 25 UNION TWP. 5229.70 TO LS @ W 1/4 COR SEC 25.
- 2006 COMBS #15446 FD LS @ E 1/4 COR SEC 25 OF UNION TWP

SHEET 1 OF 3
CORNER CODE T-1

Donald Barnes

0-09-09

PO 594

W1/4CORSEC30

WOOD POST @ FENCE INT IS @ COR. FD CUT LIMESTONE E 1/4 COR
SEC 25 UNION TWP. SET CARSONITE POST ON SOUTH SIDE OF LS.
10" DIA HOLE AROUND FENCE POST. FD HHS AROUND & IN AREA.

C) Was the corner restored through acceptance of (1) an obliterated evidence location, or, (2) a found perpetuated location?

**BECAUSE OF THE FENCE POST I DID NOT PLACE A MONUMENT.
OCCUPATION IS IN HARMONY WITH LINE & 1874 RUGERS RECORD
DISTANCE. ACCEPTED OCCUPATION AS CORNER.**

D) Describe any material discrepancy between the location of the corner as restored or reestablished and the location of that corner as previously restored or reestablished by distance and direction. Show the discrepancy on the plan view drawing under (a), above. Show the distances between the corner as previously restored or reestablished and (1) the corner as restored or reestablished, and (2) to at least 4 of the witness monuments shown on the drawing in (a), above.

NONE

(E) Was the corner reestablished through lost corner proportionate methods? If so, show the method, including the directions and distances to other public land survey corners used as evidence or used for proportioning the corner location.

I, **Donald Barnes**, hereby certify that the corner location as identified by the corner code index was determined by me under my direction and control and that this U.S. Public Land Survey Monument Record is correct and complete to the best of my knowledge and belief.

Seal
Donald
Embloss
Barnes
6-09-09

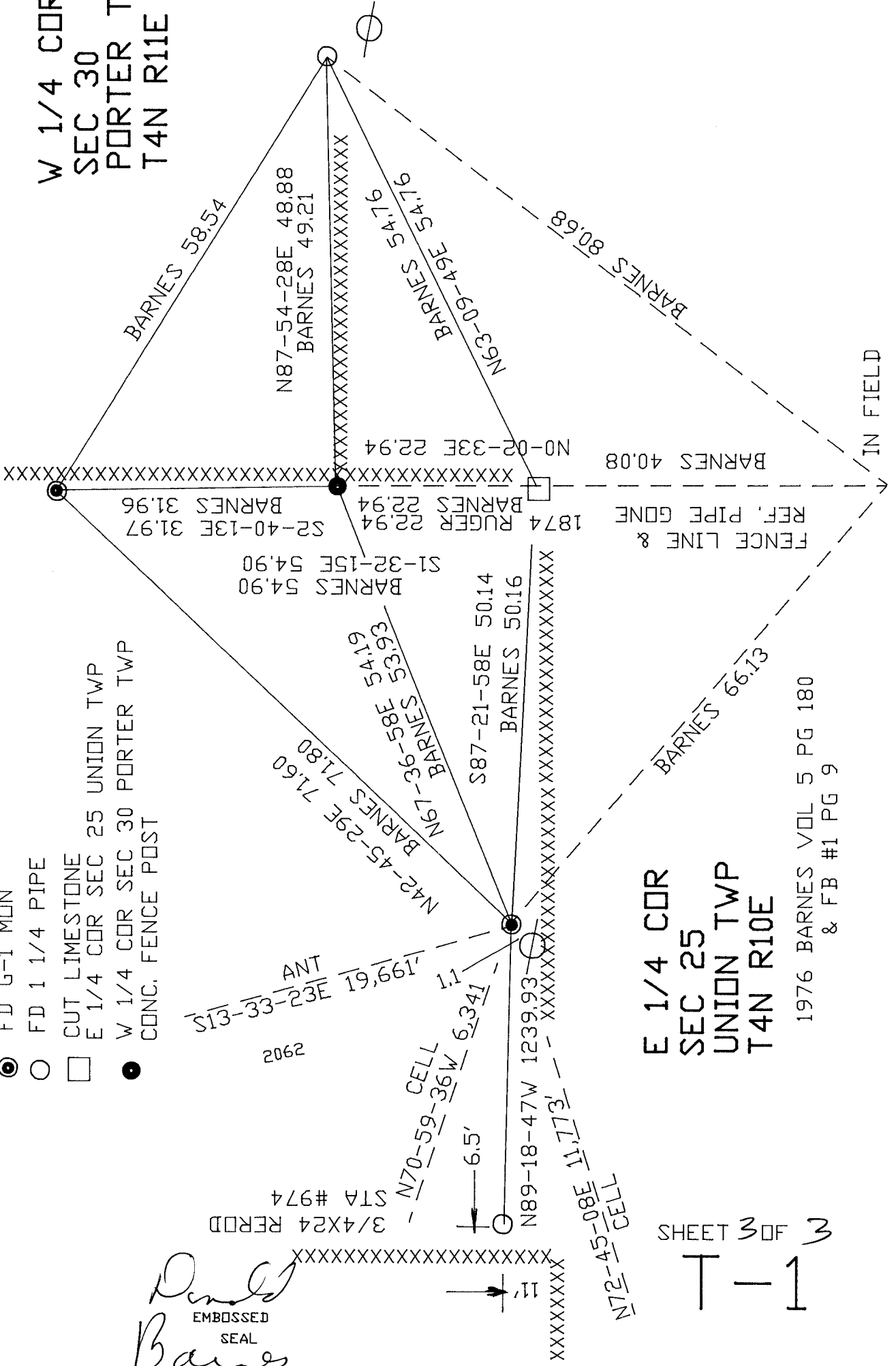
SHEET 2 OF 3

CORNER CODE **T-1**

A.E. 7.08 REQUIREMENT

- FD G-1 MON
- FD 1 1/4 PIPE
- CUT LIMESTONE
- W 1/4 COR SEC 30 PORTER TWP CONG. FENCE POST

W 1/4 COR
SEC 30
PORTER TWP
T4N R11E



Donald Barnes
EMBOSSSED SEAL
6-09-09

E 1/4 COR
SEC 25
UNION TWP
T4N R10E

1976 BARNES VOL 5 PG 180
& FB #1 PG 9

SHEET 3 OF 3

T-1