

Paper weight-110# (minimum)

Black nonfading ink required

# U.S. PUBLIC LAND SURVEY MONUMENT RECORD

For Public Land Survey Corners In:

WI ADMINISTRATIVE CODE A-E 7.08 REQUIREMENT

T4 N. R. 11 E. 4th P.M.

REV 10/23/2004

USMONREC.DWG

### CORNER CODE INDEX

1	2	3	4	5	6	7	8	9	10	11	12	13	14	15	16	17	18	19	20	21	22	23	24	25	
A																									A
B																									B
C	6																								C
D		5																							D
E																									E
F																									F
G	7																								G
H		8																							H
J																									J
K	18																								K
L		17																							L
M																									M
N																									N
O	19																								O
P		20																							P
Q																									Q
R																									R
S																									S
T	30																								T
U		29																							U
V																									V
W																									W
X	31																								X
Y		32																							Y
Z																									Z

PORTER TWP  
ROCK COUNTY WI

IF AVAILABLE  
ROCK COUNTY COORDINATES PREFERRED

North \_\_\_\_\_ Elev. \_\_\_\_\_

East \_\_\_\_\_

Hor. Datum \_\_\_\_\_ Vert. Datum \_\_\_\_\_

LATITUDE \_\_\_\_\_ ELLIPS. HT. \_\_\_\_\_

LONGITUDE \_\_\_\_\_

NAD83(91) \_\_\_\_\_ NETWORK ADJ. YR \_\_\_\_\_

GPS (X) \_\_\_\_\_ TRAVERSE (X) \_\_\_\_\_

BASED ON THE FOLLOWING CONTROL:

PLACE MONUMENT SYMBOL  AT PROPER LOCATION ON ABOVE INDEX

CORNER MONUMENT

WITNESS MONUMENT

BEARINGS ARE BASED ON: \_\_\_\_\_

FIELD BOOK \_\_\_\_\_ PAGE # \_\_\_\_\_

SHEET 1 OF 4

SHOW A PLAN VIEW DRAWING DEPICTING THE CORNER MONUMENT AND SURROUNDING PHYSICAL FEATURES, INCLUDING THE EXCAVATION AREA AND DEPTH.

PLANNING & ZONING COMMITTEE ADOPTED THIS FORM ON 12/2/1982

CORNER CODE R-17

P0589

NECORSEC27

(B) Describe any record evidence, monument evidence, occupational evidence, testimonial evidence or any other material evidence you considered, and whether the monument was found or placed.

1833 HARRISON (NOV 3RD) T4N R11E 4<sup>TH</sup> MER. NORTH  
BET. 26 & 27

2640.0 SET POST FOR COR TO QUARTER SEC  
{BURR OAK 18 N65E 52.80'; BURR OAK  
18 N74W 34.98'} {BURR OAK 18; BURR  
OAK 18} MARKED  
4007.52 BURR OAK 18 IN DIAM.  
5280.0 SET POST FOR COR TO SECS 22,23,26,27  
{BURR OAK 18 S34W 18.48'; BURR OAK  
20 S56E 96.36'; BURR OAK 18 N51W  
17.82'; BURR OAK 18 N25E 33.66' ?  
99.66' LAND ROLLING 2<sup>ND</sup> RATE TIMBER  
EVENLY BURR OAK ? ? GRASS & WEEDS

1833 HARRISON (NOV) T4N R11E 4<sup>TH</sup> MER. EAST  
BET. SEC 22 & 27

2640.0 QUARTER SEC COR. (TEMPORARY)  
2772.0 BROOK 5.28' CRS NORTH  
5247.0 INT. EAST BNDY 23.76' SOUTH OF POST  
LAND ROLLING 2<sup>ND</sup> RATE WITH WHITE OAK  
& BURR OAK TIMBER  
WEST COR WEST

2623.50 QUARTER SEC COR  
WHITE OAK 18 N55E 91.74'; WHITE  
OAK N25W 36.30' WHITE OAK 18; WHITE  
OAK 24} MARKED

5247.0 SEC COR  
N.? FRAC 1/4 SEC COR RAN LINE SOUTH 6-  
1/2 EAST 957.00' TO SMALL LAKE IN SEC  
27

1833 HARRISON (NOV) T4N R11E 4<sup>TH</sup> MER. EAST  
BET. 23 & 26

660.0 LEFT TIMBER & ENTER PRAIRIE  
2640.0 TEMPY 1/4 SEC COR  
4224.0 TRAIL NORTH  
5303.76 INT EAST BDY 7.92' SOUTH OF POST  
LAND ROLLING 1<sup>ST</sup> RATE PRAIRIE WITH  
GROWTH OF GRASS & WEEDS SOME WILD  
INDIGO

WEST COR. WEST BET SECS 23 & 26  
2651.88 SET A POST AND RAISED A MOUND OF  
EARTH & SOD FOR COR TO QUARTER SEC  
5303.76 SEC COR

1833 HARRISON (NOV 3RD) T4N R11E 4<sup>TH</sup> MER. NORTH  
BET. 22 & 23

1694.22 BURR OAK 18  
2640.0 SET POST FOR COR TO QUARTER SEC IN  
EDGE OF ???? & ENTER PRAIRIE BURR  
OAK 10 S69W 76.56'; BURR OAK 10 S16E  
112.2' BURR OAK 10; BURR OAK  
10} MARKED

4521.0 ROAD TO DOUGHERTY'S FURNANCE W.  
4620.0 66' WEST OF LI? (NAME) SPRING NORTH  
5280.0 SET POST FOR COR TO SECS 22,23,14,15  
MARKED & RAISED A MOUND LAND 1<sup>ST</sup> 1/4  
MILE ROLLING 2<sup>ND</sup> RATE WITH BURR OAK  
TIMBER GRASS & WEEDS - LAST 1/2  
ROLLING 1<sup>ST</sup> RATE PRAIRIE

1847 STEBBINS -PORTER TWP RD REC BK 1 PG 1 BEGINNING @ A  
POINT ON THE SOUTH LINE OF SEC 36 T4N R11E 1122'  
WEST OF THE SE COR OF SAID SECTION; THENCE N44 1/2W  
3742.2' TO A STAKE; THENCE N56 1/2 W 3006.96' TO THE

CORNER CODE R-17  
SHEET 1 OF 4

*Donald Barnes*  
*May 8, 2008*

- PO589 NECORSEC27  
 CENTER OF THE EAST AND WEST ROAD NEAR J. STEVENS;  
 THENCE N40W 5016' TO STAKE; THENCE N34 1/2 W  
 2,344.98' TO THE SEC LINE BETWEEN 26 & 27 419.76'  
 SOUTH OF THE NW COR OF SEC 26; THENCE NORTH ON SAID  
 SECTION LINE AND THE BETWEEN 22 & 23 3059.76' TO THE  
 1/4 POST ON THE SEC LINE BETWEEN SECTION 22 & 23 OF  
 SAID TOWN & RAND(?) AND THE WHOLE LENGTH OF THE  
 ROAD IS 17,169.9' COURSES GIVEN ACCORDING TO THE  
 TRUE MERIDIAN VARIATION OF NEEDLE 7-34. HARRISON  
 STEBBINS-COUNTY SURVEYOR
- 1855 STEBBINS PORTER TWP RD REC BK 1 PG 7 BEGINNING AT  
 THE 1/4 POST ON THE SEC LINE BETWEEN SECTIONS 22 AND  
 23; THENCE SOUTH ON THE SEC LINE 8,712' TO A POINT ON  
 THE CENTER OF THE HIGHWAY RUNNING EASTERLY AND  
 WESTERLY THROUGH SEC 34 & 35, SAID POINT BEING 792'  
 SOUTH OF THE SW COR OF SEC 26, T4NR11E. THE LENGTH  
 OF SAID ROAD IS 8712'; SAID ROAD IS 66 WIDE. COURSES  
 GIVEN ACCORDING TO THE TRUE MERIDIAN. VARIATION OF  
 NEEDLE 7 3/4. H. STEBBINS-SURVEYOR
- 1878 RUGER VOL 2 PG 241 FD LIMESTONE ON COR 12X8X4 &  
 REMAINS OF OLD STAKE UNDER IT, ALSO FD NE BT &  
 STUMPS OF SW BT. RENEWED STAKE & REPLACED STONE  
 VAR 6-35 TO E 1/4 COR SEC 22, VAR 7-36 1312.08 TO  
 STAKE & HH ON THE N & S SIDES @ S 1/16TH COR OF SE  
 1/4 SEC 22, 2624.16 TO S 1/4 COR SEC 22.
- 1878 RUGER VOL 2 PG 242 SEE SEC 22 PG 195 VAR 6-30  
 1353.00 TO LIMESTONE 14X6X5 @ N 1/16TH COR OF NW  
 1/4 SEC 26, 2706.00 TO N 1/4 COR SEC 26.
- 1973 LEE VOL 5 PG 28 DUG & FD NOTHING AT NW COR
- 197? SCHROEDER CSM10-550 STATES NOTHING ABOUT MON.  
 SOUTHERLY 1330.38 TO A PIPE ON THE SEC LINE.
- 1979 BARNES VOL 5 PG 548 (KARNS SURVEY) S89-33-59E  
 2704.314 TO S 1/4 COR SEC 23, S0-08-29E 2649.33 TO W  
 1/4 COR SEC 26, S89-55-16W 2635.726 (PRORATED) TO N  
 1/4 COR SEC 27, N0-29-02E 2649.33 TO W 1/4 COR SEC 23.
- 1979 BARNES VOL 5 PG 553 ESTABLISHED COR. AT THE  
 PRORATED DISTANCE FROM THE N 1/4 COR SEC 27 AND  
 SEC 26 USING RUGER'S RECORD DISTANCES AND THE  
 PRORATED DISTANCE TO THE E 1/4 COR OF SEC 27 & SEC  
 22 USING THE ORIGINAL DISTANCES. SET ALUM MON IN  
 EAST EDGE OF OLD PATCH. DUG 7' DEEP & ROUND  
 REMAINS OF PAST EXCAVATION IN EAST SIDE OF HOLE.  
 SHOWS OLD PATCH & NEW EXCAVATION HOLE. COR 3' EAST  
 OF CENTER OF PVMT & ON E/W CENTER OF PVMT. @ N  
 1/16TH COR OF NW 1/4 OF SEC 26 DUG & FD NOTHING.  
 SHOWS LIMITS OF EXCAVATION
- 1982 BARNES VOL 6 PG 279 FD ALUM MON S00-00-02E 2649.36  
 TO FD ALUM MON @ E 1/4 COR SEC 27, N89-55-38W  
 2635.82 TO N 1/4 COR SEC 27. ANGLE 90-04-24 [KARNS  
 90-03-45] @ NE FROM E 1/4 COR TO N 1/4 COR SEC 27
- 1982 BARNES VOL 6 PG 284 FD ALUM MON & ADDED RISTERS DUG  
 2X4X4 DEEP HOLE, 15 TO THE SOUTH OF THE ALUM.
- 1983 BARNES #6841 FD ALUM MON N89-55-38W TO POLY @  
 N1/4 COR SEC 27; S00-07-02W 2649.39 TO ALUM MON @  
 E1/4 COR SEC 27
- 2000 COMBS #7655 FD ALUM. N89-34-37W 1317.96 TO 1/16TH  
 COR, N89-34-37W 2635.92 TO ALUM @ S 1/4 COR SEC 22.

SHEET 2 OF 4  
 CORNER CODE R-17

*Donald Barnes*  
 May 8, 2008

P0589 NECORSEC27

FD ALUM. ON LINE WITH CENTER OF PVMT TO THE EAST & 3.7' EAST OF CENTER OF N/S PVMT.

C) Was the corner restored through acceptance of (1) an obliterated evidence location, or, (2) a found perpetuated location?

ACCEPTED FD CI.

D) Describe any material discrepancy between the location of the corner as restored or reestablished and the location of that corner as previously restored or reestablished by distance and direction. Show the discrepancy on the plan view drawing under (a), above. Show the distances between the corner as previously restored or reestablished and (1) the corner as restored or reestablished, and (2) to at least 4 of the witness monuments shown on the drawing in (a), above.

NONE

(E) Was the corner reestablished through lost corner proportionate methods? If so, show the method, including the directions and distances to other public land survey corners used as evidence or used for proportioning the corner location.

I, **Donald Barnes**, hereby certify that the corner location as identified by the corner code index was determined by me under my direction and control and that this U.S. Public Land Survey Monument Record is correct and complete to the best of my knowledge and belief.

*Donald*

Seal  
*Barnes*

Emboss

*May 8 2008*

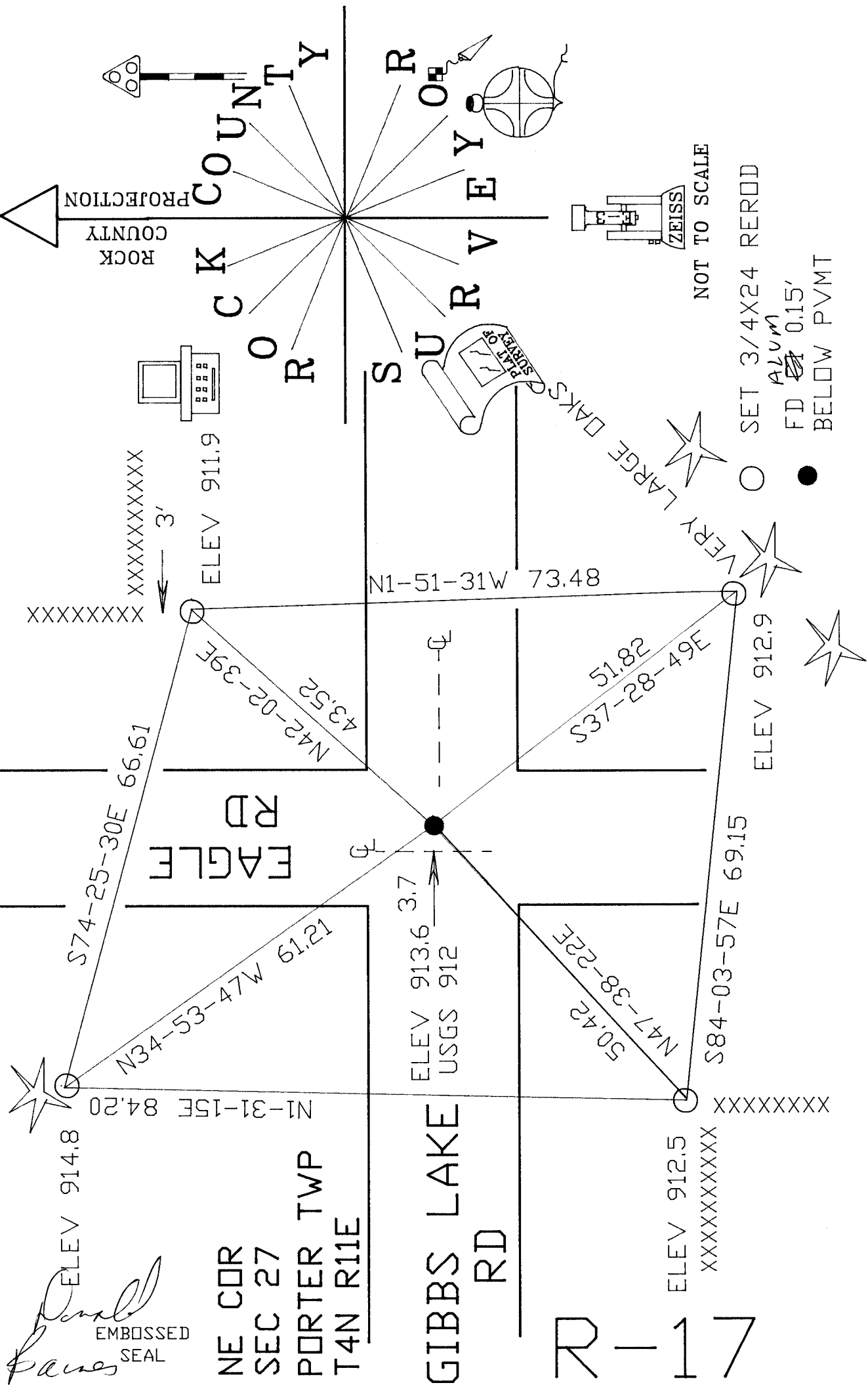
SHEET 3 OF 4

CORNER CODE **R-17**

A.E. 7.08 REQUIREMENT

OBSERVATION SHEET #589

# N



*Paul Jones*  
 EMBOSSED SEAL  
 May 8, 2008

NE COR  
 SEC 27  
 PORTER TWP  
 T4N R11E

GIBBS LAKE RD  
 RD 117