

Paper weight-110# (minimum)

Black nonfading ink required

U.S. PUBLIC LAND SURVEY MONUMENT RECORD

For Public Land Survey Corners In:

WI ADMINISTRATIVE CODE A-E 7.08 REQUIREMENT

T. 4 N. R. 11 E. 4th P.M.

REV 10/23/2004

USMONREC.DWG

CORNER CODE INDEX

A	1	2	3	4	5	6	7	8	9	10	11	12	13	14	15	16	17	18	19	20	21	22	23	24	25	A
B																										B
C		6																								C
D						5																				D
E																										E
F																										F
G																										G
H																										H
J																										J
K																										K
L																										L
M																										M
N																										N
O																										O
P																										P
Q																										Q
R																										R
S																										S
T																										T
U																										U
V																										V
W																										W
X																										X
Y																										Y
Z																										Z

PORTER TWP

ROCK COUNTY WI

IF AVAILABLE
ROCK COUNTY COORDINATES PREFERRED

North _____ Elev. _____

East _____

Hor. Datum _____ Vert. Datum _____

LATITUDE _____ ELLIPS. HT. _____

LONGITUDE _____

NAD83(91) _____ NETWORK ADJ. YR _____

GPS (X) _____ TRAVERSE (X) _____

BASED ON THE FOLLOWING CONTROL:

PLACE MONUMENT SYMBOL AT PROPER LOCATION ON ABOVE INDEX

CORNER MONUMENT

WITNESS MONUMENT

BEARINGS ARE BASED ON: _____

FIELD BOOK _____ PAGE # _____

SHEET 1 OF 4

SHOW A PLAN VIEW DRAWING DEPICTING THE CORNER MONUMENT AND SURROUNDING PHYSICAL FEATURES, INCLUDING THE EXCAVATION AREA AND DEPTH.

PLANNING & ZONING COMMITTEE ADOPTED THIS FORM ON 12/2/1982

CORNER CODE R-1

P0581

SWCORSEC19

(B) Describe any record evidence, monument evidence, occupational evidence, testimonial evidence or any other material evidence you considered, and whether the monument was found or placed.

- 1833 (SEP13) BRINK & MULLETT T4N R10E VAR 8-15 NORTH ON EAST SIDE OF SECTION 25
2147.64 BUR OAK 12 IN DIAMETER
2640.0 SET QUARTER SECTION POST BUR OAK 14 S69W 120.78'; BLACK OAK 6 N9W 67.32'
4762.56 BUR OAK 10 IN DIAMETER
5280.0 SET POST CORNER SECTIONS 24 & 25 BUR OAK 12 S28W 64.68'; BUR OAK 16N62W 9.24' LAND ROLLING SECOND RATE WHITE BLACK AND BUR OAK
- 1833 (SEP13) BRINK & MULLETT T4N R10E VAR 8-15 NORTH ON EAST SIDE OF SECTION 24
2640.0 SET QUARTER SECTION POST BUR OAK 10 S5W 25.74'; BUR OAK 10 N47W 85.8'
4450.38 BUR OAK 10 IN DIAMETER
5280.0 SET POST CORNER SECTIONS 13 & 24 BUR OAK 14 S63W 10.56'; BUR OAK 14 N43W 37.62' LAND ROLLING SECOND RATE BLACK WHITE AND BUR OAK
- 1833 (NOV5) HARRISON T4N R11E 4TH MER. WEST BET SECS 19 & 30
2640.0 QUARTER SEC COR. {BURR O 12 S3W 35.64'; BURR OAK 18 NORTH 73.26' {BURR O 12; BURR O 18} MARKED
5181.00 INT. W. BDY 39.60' NORTH OF POST {BURR OAK 10 S82E 52.8'; BURR O 18 N62E 81.18' {BURR OAK 10; BURR OAK 18} MARKED LAND @ ? SAME.
- 1833 ORIG GOV PLAT NW COR SEC 30 PORTER TWP IS 39.60' NORTH OF NE COR SEC 25 UNION TWP
- 1833 (NOV5) HARRISON T4N R10E EAST ON RAND. BET SECS 24 & 25
2640.0 TEMPY 1/4 POST
5205.42 INT. EAST BDY 52.80' NORTH OF POST LAND ROLLING 2ND RATE TIMBER WHITE & BURR OAK INDY, ?? GRASS, & WEEDS WEST COR WEST BE. 24 & 25
2602.71 QUARTER SEC. COR BURR OAK 18 N67W 34.98'; WHITE OAK 24 N52E 49.5' {BURR OAK 18; WHITE OAK 24} MARKED
5205.42 SEC COR.
- 1868 LOCKE VOL 1 PG 329 & #3607 FOUND BTS. 40.92' NORTH OF SE COR SEC 24 UNION TWP. @ SE COR SEC 24 FD N.B.T. & STUMP OF S.B.T. ,
- 1870 RUGER REMONUMENTATION AUGUST 20 PG 72 NORTH ON EAST LINE OF SE 1/4 SEC 24 (T4N R10E) ON A VAR 6-33 OFFSET WEST 28.38'; OFFSET WEST 33.00' AT
2650.56 INTERSECTED QUARTER LINE 40.59' WEST OF QUARTER CORNER. FOUND CORNER AS SET BY LOCKE. TESTED IT AND FOUND IT CORRECT. COR VAR 7-00' NORTH ON EAST LINE OF NE 1/4 SEC 24 (T4N R10E) ON A VAR 7-00' AT
2650.56 INTERSECTED NORTH BOUNDARY LINE AT CORNER. FOUND CORNER AS ESTABLISHED BY LOCKE. TESTED IT AND FOUND IT CORRECTED.
- 1870 RUGER (AUG17) REMONUMENTATION PG 66 EAST ON NORTH LINE OF NW 1/4 SEC 25 (T4N R10E) ON A VAR 6-50' OFFSET NORTH 17.82' AT

Donald Barnes

SHEET 1 OF 4
CORNER CODE R-1

6-10-2009

P0581 SWCORSEC19
 2620.20 INTERSECTED QUARTER LINE 17.16' NORTH OF
 QUARTER CORNER. FOUND OLD STAKE AT
 CORNER ALSO FOUND STUMP OF EAST BEARING
 TREE AND REMAINS OF STUMP OF WEST BEARING
 TREE. COR. VAR 6-51'
*EAST ON NORTH LINE OF NE 1/4 SEC 25
 ON A VAR 6-50' OFFSET NORTH 17.16'
 OFFSET NORTH 9.90' AT*
 2614.92 INTERSECTED EAST BOUNDARY LINE 38.94'
 NORTH OF CORNER FOUND OLD STAKE AT
 CORNER. ALSO FOUND NORTH BEARING TREE
 AND STUMP OF SOUTH BEARING TREE. COR VAR
 6-35'
 1870 RUGER (AUG19) REMONUMENTATION PG 67 SOUTH ON
*EAST LINE OF NE 1/4 SEC 25(T4N
 R10E) ON A VAR 7-43 AT*
 2645.28 INTERSECTED QUARTER LINE 8.58' EAST OF
 QUARTER CORNER. FOUND OLD STAKE AT
 CORNER. ALSO FOUND NORTH BEARING TREE.
 COR. VAR 7-32
*SOUTH ON EAST LINE OF SE 1/4 SEC 25 ON
 A VAR 7-35 OFFSET EAST 7.26' AT*
 2655.51 INTERSECTED SOUTH BOUNDARY LINE 31.68'
 EAST OF CORNER COR. VAR 7-03'
 1874 RUGER VOL 2 PG 179 FD OLD STAKE & SE BT DROVE NEW
 STAKE IN PLACE OF OLD AND SET LIMESTONE 17X7X5 ON
 TOP OF IT & SURROUNDED IT WITH 2 LIME & 2 HH STONES.
 THE COR IS 39.60' NORTH & 1.82' WEST OF COR FOR
 UNION. CALLS FOR STONE MON @ NE COR SEC 25 UNION
 TWP
 1933 SUNNY VOL 3 PG 223 STATES NOTHING ABOUT COR.
 SHOWS AS NORTH OF FD 6X6 CUTSTONE @ SE COR SEC 24
 PORTER TWP. NORTHERLY 1328.9 TO SET IRON PIPE,
 NORTHERLY 1375.10 TO IRON PIPE, 2657.8 TO FD 6X6 CUT
 STONE MON @ E 1/4 COR SEC 24 UNION TWP
 1970 BATTERMAN VOL 4 PG 449 FD CUT STONE AT FENCE COR
 FOR SE COR SEC 24 UNION TWP
 1985 BARNES VOL 6 PG 346 SHOWS NORTH OF SE COR SEC 24
 UNION TWP & REC DISTANCES.
 1998 COMBS #8122 UNION TWP FD STONE SEC 24 UNION TWP.
 2616.56 TO SET PIN @ S 1/4 COR SEC 24 UNION TWP.
 2006 LATHROP #15421 FD STONE @ SE COR SEC 24 UNION TWP.
 ND1-41-25W 2660.16 TO FD PIN @ E 1/4 COR SEC 24
 UNION TWP

Donald Burns
 6-10-2009

PO581 SWCORSEC19

DUG 2.5 DEEP HOLE AS SHOWN IN DRAWING. ALSO DUG UNDER LARGE STONE ABOUT 1.5 NORTH OF THE SOUTH STONE EDGE. PLACED POLY MON ON LINE WITH THE CUT LS @ THE SE COR SEC 24 & THE CUT LS @ THE E 1/4 COR SEC 24 AT RECORD DISTANCE WHICH IS IN HARMONY WITH OCCUPATION. PLACED 2 MAGNETS AT THE BASE & 2 MAGNETS ABOUT MIDWAY. PLACED CARSONITE ON SOUTH SIDE OF POLY. POLY IS ON WEST SIDE OF N/S FENCE.



C) Was the corner restored through acceptance of (1) an obliterated evidence location, or, (2) a found perpetuated location?

ACCEPTED OBLITERATED LOCATION.

D) Describe any material discrepancy between the location of the corner as restored or reestablished and the location of that corner as previously restored or reestablished by distance and direction. Show the discrepancy on the plan view drawing under (a), above. Show the distances between the corner as previously restored or reestablished and (1) the corner as restored or reestablished, and (2) to at least 4 of the witness monuments shown on the drawing in (a), above.

(E) Was the corner reestablished through lost corner proportionate methods? If so, show the method, including the directions and distances to other public land survey corners used as evidence or used for proportioning the corner location.

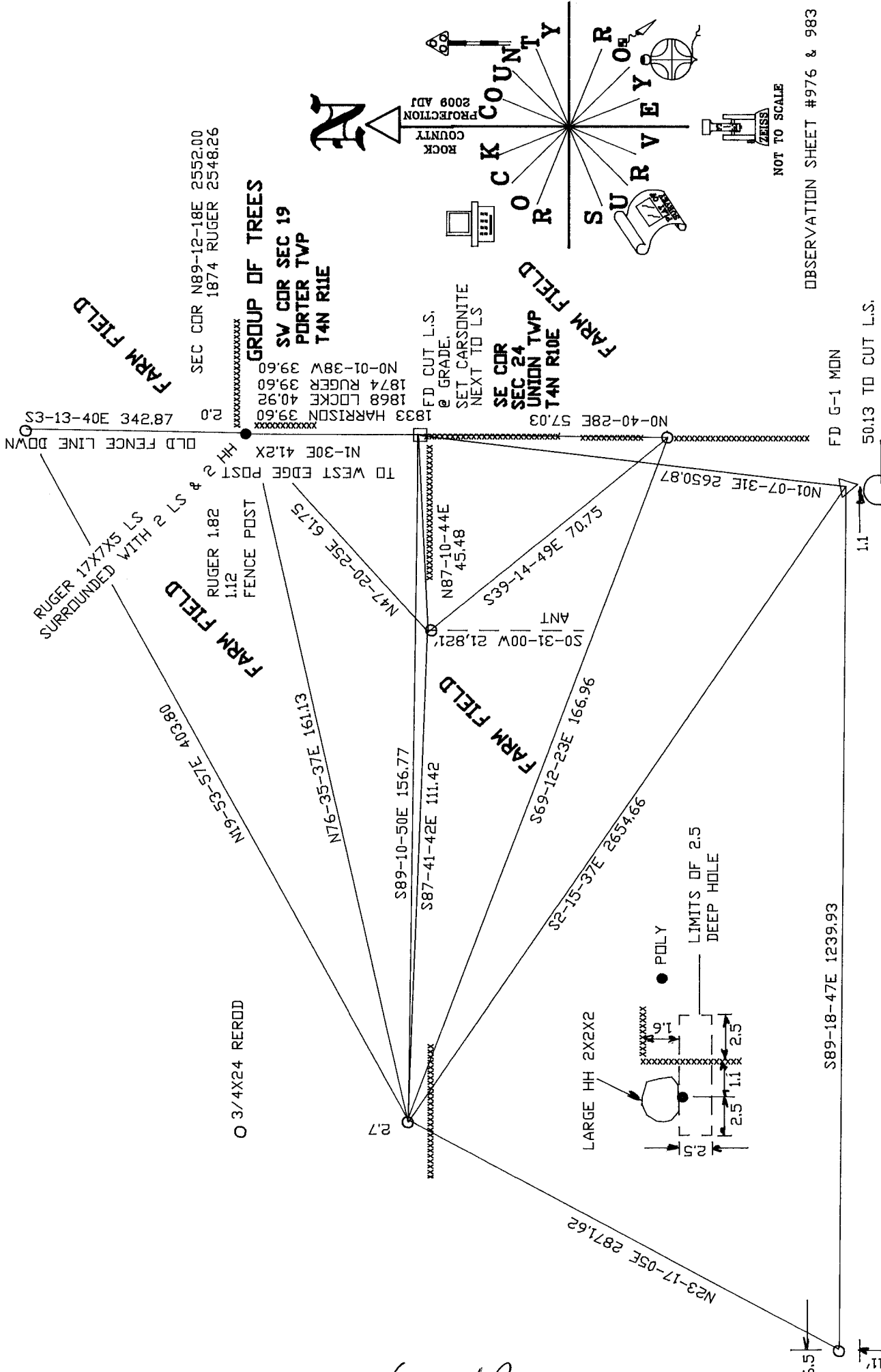
I, **Donald Barnes**, hereby certify that the corner location as identified by the corner code index was determined by me under my direction and control and that this U.S. Public Land Survey Monument Record is correct and complete to the best of my knowledge and belief.

Seal

Emboss

6-10-2009

SHEET 3 OF 4

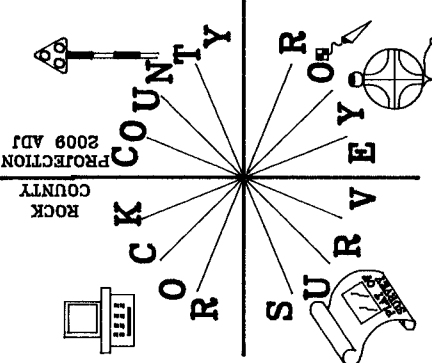
CORNER CODE **R-1**

A.E. 7.08 REQUIREMENT



SEC CDR N89-12-18E 2552.00
1874 RUGER 2548.26

GROUP OF TREES
SV CDR SEC 19
PORTER TWP
T4N R10E



NOT TO SCALE

OBSERVATION SHEET #976 & 983

Lind Bauer
6-10-2009

SHEET 4 OF 4
R-1

RD

S89-18-47E 1239.93

FD G-1 MON

50.13 TO CUT L.S.

N01-07-31E 2650.87

N0-40-28E 57.03

FD CUT L.S.
@ GRADE.
SET CARSONITE
NEXT TO LS

1833 HARRISON 39.60
1868 LOCKER 40.92
1874 RUGER 39.60
N0-01-38W 39.60

FARM FIELD

RUGER 17X7X5 LS
SURROUNDED WITH 2 LS
& S1

FARM FIELD

FARM FIELD

FARM FIELD

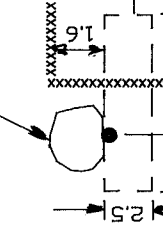
N9-53-57E 403.80

N76-35-37E 1611.63

S89-10-50E 156.77

S87-41-42E 111.42

S69-12-23E 166.96



S69-10-44E 45.48

S39-14-65S 70.71

S0-31-00W 21.821

6.5

1.1

N23-17-05E 2871.62