

Paper weight-110# (minimum)

Black nonfading ink required

U.S. PUBLIC LAND SURVEY MONUMENT RECORD

For Public Land Survey Corners In:

WI ADMINISTRATIVE CODE A-E 7.08 REQUIREMENT

T. 4 N. R. 11 E. 4th P.M.

REV 10/23/2004

USMONREC.DWG

CORNER CODE INDEX

PORTER TWP

ROCK COUNTY WI

IF AVAILABLE

ROCK COUNTY COORDINATES PREFERRED

	1	2	3	4	5	6	7	8	9	10	11	12	13	14	15	16	17	18	19	20	21	22	23	24	25		
A																											A
B																											B
C																											C
D																											D
E																											E
F																											F
G																											G
H																											H
J																											J
K																											K
L																											L
M																											M
N																											N
O																											O
P																											P
Q																											Q
R																											R
S																											S
T																											T
U																											U
V																											V
W																											W
X																											X
Y																											Y
Z																											Z

North _____ Elev. _____

East _____

Hor. Datum _____ Vert. Datum _____

LATITUDE _____ ELLIPS. HT. _____

LONGITUDE _____

NAD83(91) _____ NETWORK ADJ. YR _____

GPS (X) _____ TRAVERSE (X) _____

BASED ON THE FOLLOWING CONTROL:

PLACE MONUMENT SYMBOL AT PROPER LOCATION ON ABOVE INDEX

CORNER MONUMENT

WITNESS MONUMENT

BEARINGS ARE BASED ON: _____

FIELD BOOK _____ PAGE # _____

SHEET 1 OF 3

SHOW A PLAN VIEW DRAWING DEPICTING THE CORNER MONUMENT AND SURROUNDING PHYSICAL FEATURES, INCLUDING THE EXCAVATION AREA AND DEPTH.

PLANNING & ZONING COMMITTEE ADOPTED THIS FORM ON 12/2/1982

CORNER CODE R-7

PO584

N1/4CORSEC29

(B) Describe any record evidence, monument evidence, occupational evidence, testimonial evidence or any other material evidence you considered, and whether the monument was found or placed.

1833 HARRISON (NOV 3RD) T4N R11E 4TH MER. EAST ON RAND. BET. 20 & 19

2640.0 TEMPY 1/4 SEC COR

5299.80 INT. E BDY 39.60' NORTH OF POST LAND & SAME

WEST COR. WEST BET SECS 20 & 29

2649.90 QUARTER SEC COR. {BURR OAK 14 S81W 54.12'; BURR OAK 18 N20E 33.00' BURR OAK 14; BURR OAK 18} MARKED

5299.80 SEC COR

1847 PORTER TWP RD REC BK 1 PG 1 BEGINNING AT A POINT ON THE ROAD LEADING FROM JANESVILLE TO MADISON 165' SOUTH OF THE CENTER OF SEC 32 T4N R11E; THENCE NORTH ON THE CENTRE LINE OF SEC 32 TO THE 1/4 POST ON THE NORTH LINE OF SAID SEC; THENCE NORTH ON THE CENTER LINE OF SEC 29 TO THE 1/4 POST ON THE NORTH LINE OF 29; THENCE NORTH; THENCE NORTH ON THE CENTERLINE OF SEC 20 4768.5 TO A POINT ON THE CENTER OF THE ROAD RUNNING EAST AND WEST THROUGH SAID SECTION. THE LENGTH OF SAID RD IS 12,837.0'. COURSES GIVEN ACCORDING TO THE TRUE MERIDIAN. VARIATION OF NEEDLE 7 3/4

1871 RUGER VOL 2 PG 68 FD OLD STAKE ALSO SW BT & STUB OF NE BT DROVE STAKE DEEP & SURROUNDED IT WITH 4 HH & PUT ON TOP OF STAKE HH STONE 15X11X5, VAR 7-10 2688.18 TO NE COR SEC 29, VAR 6-47 2654.52 TO NW COR SEC 29, VAR 7-28 2645.94 TO HH 15X10X6 @ CENTER OF SEC 29, VAR 7-28 5313.99 TO S 1/4 COR SEC 29.

1960 BATTERMAN VOL 4 PG 44 FD HH STONES SURROUNDING WOODEN STAKE . REFERENCED SAME. ON LINE WITH E/W FENCE LINES.

1977 BARNES VOL 5 PG 264 EDM 2657 TO SW COR SEC 20.

1977 BARNES VOL 5 PG 273 SET CAST IRON MON FROM TIES.

1977 BARNES VOL 5 PG 275 EDM WESTERLY 1328 TO N/S FENCE. EDM FROM N/S FENCE TO SW COR SEC 20

1978 PHILLIPSON CSM VOL 8 PG 33 FD PIPE IN WATER BOX 500-10-19E

1979 BARNES VOL 5 PG 567 FD CI MON S2-44-00E 2648.87 TO INTERSECTION OF 1/4 LINES.

1980 COMBS CSM 10-105 SET RR @ CENTER OF SEC 20 SO-10-40W ALONG N/S 1/4 LINE

1985 LEE CSM VOL 13 PG 220 CI N89-42-35E TO 1" PIPE @ SE COR SEC 20

1995 KREBS #8805 CI MON N89-34-44E 2689.70 TO FD 1" PIPE @ NE COR SEC 29

1997 SCHROEDER #8809 STATES NOTHING ABOUT MON. N87-20-52E 684.85 TO SET IRON PIN, N87-20-52E 1344.85 TO FD IRON PIN.

1999 HOULE #7539 C.I. MON N89-42-46E 1344.87 TO FD T BAR.

2003 COMBS CSM 26 PG 209 CI. NO-10-40E 2675.14 TO CENTER OF R/R @ SEC 20. N89-43-56W 2656.72 TO ALUM @ SW COR SEC 20. PROPERTY PIPE IS N89-43-56W 33.00 FROM S 1/4 COR

2004 COMBS #15050 CI. S89-56-14E 2689.64 TO PIPE @ SE COR SEC 20, NO-10-14E TO CENTER OF SEC 20

2005 LATHROP CSM VOL 28 PG 263 CI MON.

2007 GUARD #15724 FD CI N89-42-46E 2689.75 TO 1" PIPE @ SE COR SEC 20 & NO-10-27W 2675.18 TO R/R @ CENTER OF SEC 20. AT W 1/16TH COR OF SE 1/4 SEC 20 FD R/R SPIKE S66-40-21W 0.23 FROM THE MIDPOINT & ON A LINE WITH THE CENTER & S 1/4 COR SEC 20.

Daniel Barnes

6-10-09

PO584 N1/4CORSEC29

2007 COMBS CSM VOL 31 PG 97 FD CI N89-43-56W 2656.72 TO
ALUM @ SW COR SEC 20, N00-10-40E 2675.14 TO RR @
CENTER OF SEC 20

I FD CI. MON. ALSO USED MY 1979 OBSERVATIONS FB#2 PG 1
WITH MY 2008 OBSERVATION TO THE CI.

C) Was the corner restored through acceptance of (1) an obliterated evidence location, or, (2) a found perpetuated location?

ACCEPTED CI

D) Describe any material discrepancy between the location of the corner as restored or reestablished and the location of that corner as previously restored or reestablished by distance and direction. Show the discrepancy on the plan view drawing under (a), above. Show the distances between the corner as previously restored or reestablished and (1) the corner as restored or reestablished, and (2) to at least 4 of the witness monuments shown on the drawing in (a), above.

NONE

(E) Was the corner reestablished through lost corner proportionate methods? If so, show the method, including the directions and distances to other public land survey corners used as evidence or used for proportioning the corner location.

**NO. IN 1871 RUGER FD THE OLD STAKE ALSO THE SW BT & STUMB
OF NE BT. BATTERMAN FOUND RUGER'S STAKE SURROUNDED BY
HH.**

I, **Donald Barnes**, hereby certify that the corner location as identified by the corner code index was determined by me under my direction and control and that this U.S. Public Land Survey Monument Record is correct and complete to the best of my knowledge and belief.

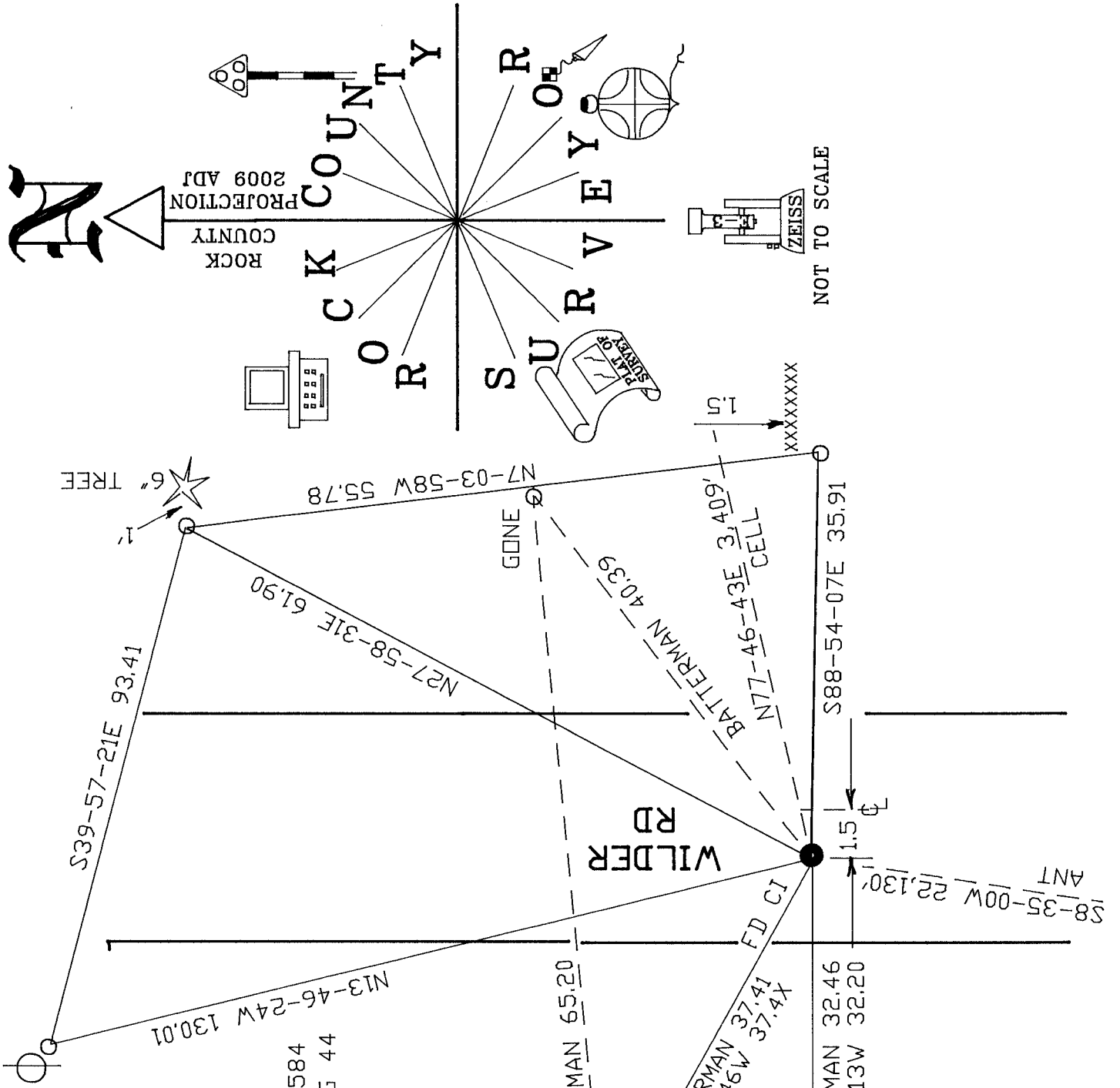
Seal
Donald Barnes
Emboss

SHEET 2 OF 3

6-10-09

CORNER CODE **R-7**

A.E. 7.08 REQUIREMENT



O SET 3/4X24 REROD
 OBSERVATION SHEET #584
 1960 BATTERMAN VOL 4 PG 44

N 1/4 COR
 SEC 29
 PORTER TWP
 T4N R11E

6-10-09
Donald Barnes

PIPE IN BASE
 OF TREE

DRIVE
 WAY

XXXXXXXXXX

SHEET 3 OF 3

R-17

