

U.S. PUBLIC LAND SURVEY MONUMENT RECORD

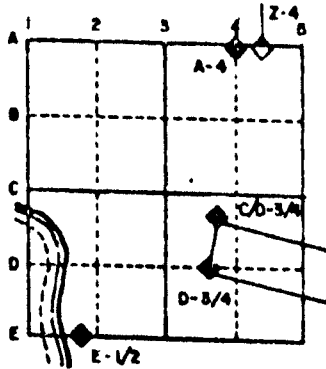
For Public Land Survey Corners in the
T. 4 N., R. 11 E.

CORNER CODE INDEX

1	2	3	4	5	6	7	8	9	10	11	12	13	14	15	16	17	18	19	20	21	22	23	24	25	
A																									
B																									
C	6																								
D		5																							
E			4																						
F				3																					
G					2																				
H																									
I																									
J																									
K																									
L																									
M																									
N																									
O																									
P																									
Q																									
R																									
S																									
T																									
U																									
V																									
W																									
X																									
Y																									
Z																									

PLACE MONUMENT SYMBOL (◆) AT PROPER LOCATION ON ABOVE INDEX

EXAMPLE



PORTER TWP
ROCK COUNTY WI

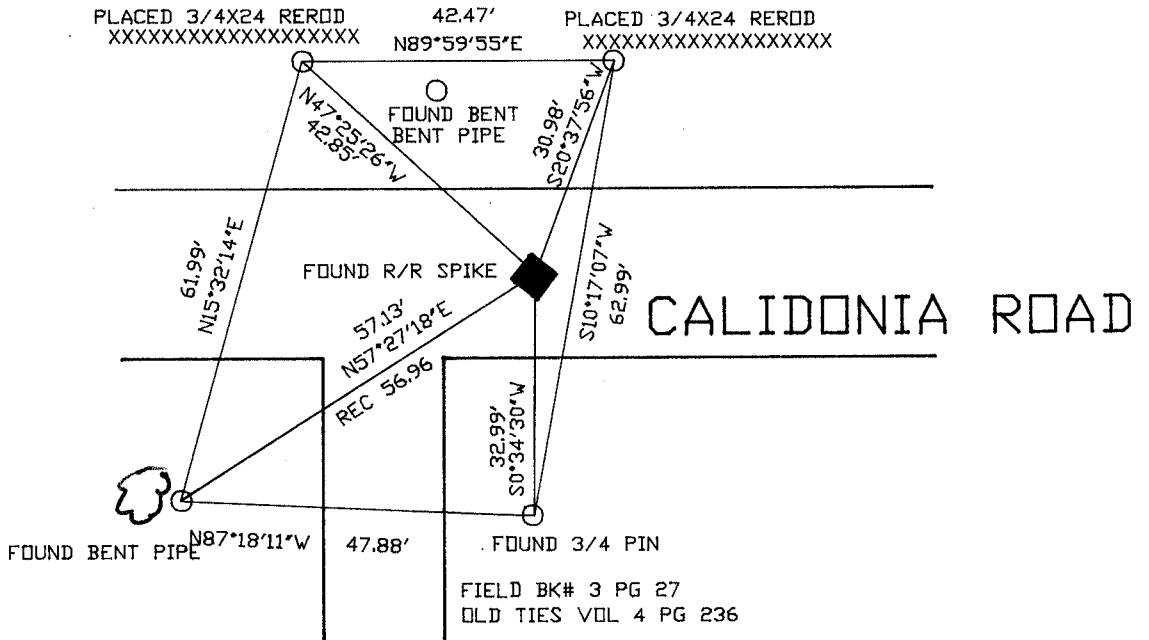
IF AVAILABLE
STATE PLANE COORDINATES

North (Y) _____ Eleve. (Z) _____
 East (X) _____ Zone _____
 Hor. Datum _____ Vert. Datum _____

◆ CORNER MONUMENT

○ WITNESS MONUMENT

BEARINGS ARE BASED ON: ASSUMED



MICROFILMED

SHEET ___ OF ___

CORNER CODE: 5 17

(B) Describe any record evidence, monument evidence, occupational evidence, testimonial evidence or any other material evidence you considered, and whether the monument was found or placed.

1833 HARRISON ORIGINAL SURVEY. PLACED CORNER TO SECS 10,11,14,15 MARKED A POST AND RAISED MOUND OF EARTH & SOD.

1886 RUGER VOL 2 PG 282. USED CORNER TO ESTABLISH THE S 1/4 CORNER OF SECTION 11. SHOWS 2722.50 FEET TO THE S 1/4 CORNER OF SECTION 11.

1953 ELY PLAT OF SURVEY. USED CORNER FOR A LARGE SURVEY IN SECTION 15 BUT HE DID NOT STATE ANYTHING ABOUT THE CORNER.

1965 BATTERMAN JR. VOL 4 PG 236 FOUND LIMESTONE 31X14X4 SURROUNDED BY HHS. SHOWS TIES. SHOWS 2645.30 TO THE N 1/4 CORNER OF SECTION 15.

1971 LEE VOL 4 PG 534 SHOWS 2654 TO W 1/4 COR OF SEC 11 AND 1878 TO SOUTH SIDE OF YAHARA RIVER.

1971 COMBS PLAT OF SURVEY. FOUND A R/R SPIKE AT THE CORNER.

FOUND A R/R SPIKE AND TWO REFERENCE MONUMENTS.

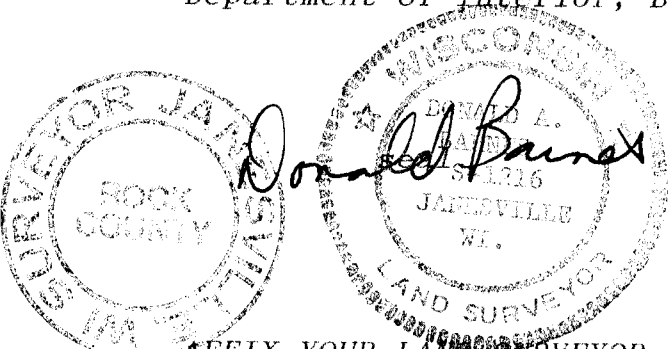
C) Was the corner restored through acceptance of (1) an obliterated evidence location, or, (2) a found perpetuated location?

ACCEPTED FOUND PERPETUATED LOCATION.

D) Describe any material discrepancy between the location of the corner as restored or reestablished and the location of that corner as previously restored or reestablished by distance and direction. Show the discrepancy on the plan view drawing under (a), above. Show the distances between the corner as previously restored or reestablished and (1) the corner as restored or reestablished, and (2) to at least 4 of the witness monuments shown on the drawing in (a), above.

(E) Was the corner reestablished through lost corner proportionate methods? If so, show the method, including the directions and distances to other public land survey corners used as evidence or used for proportioning the corner location.

I, Donald Barnes, hereby certify that the corner points as identified by the corner code index were, in a field survey on, February 14, 1991 established, re-established, monumented, re-monumented, recovered or restored as expressed below and in conformance with the regulations and rules as required in the current manual of survey instructions of the United States Department of Interior, Bureau of Land Management.



AFFIX YOUR LAND SURVEYOR SEAL

COUNTY SURVEYOR FILING DATA

Date of computer entry _____

Date microfilmed _____

Number of included sheets J 17
CORNER CODE