

U.S. PUBLIC LAND SURVEY MONUMENT RECORD

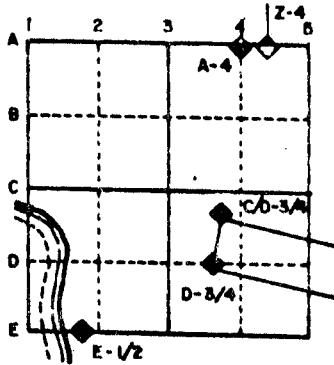
For Public Land Survey Corners in the
T. 4 N., R. 11 E.

CORNER CODE INDEX

	1	2	3	4	5	6	7	8	9	10	11	12	13	14	15	16	17	18	19	20	21	22	23	24	25
A																									
B																									
C																									
D																									
E																									
F																									
G																									
H																									
I																									
J																									
K																									
L																									
M																									
N																									
O																									
P																									
Q																									
R																									
S																									
T																									
U																									
V																									
W																									
X																									
Y																									
Z																									

PLACE MONUMENT SYMBOL (◆) AT PROPER LOCATION ON ABOVE INDEX

EXAMPLE



PORTER TWP
ROCK COUNTY WI

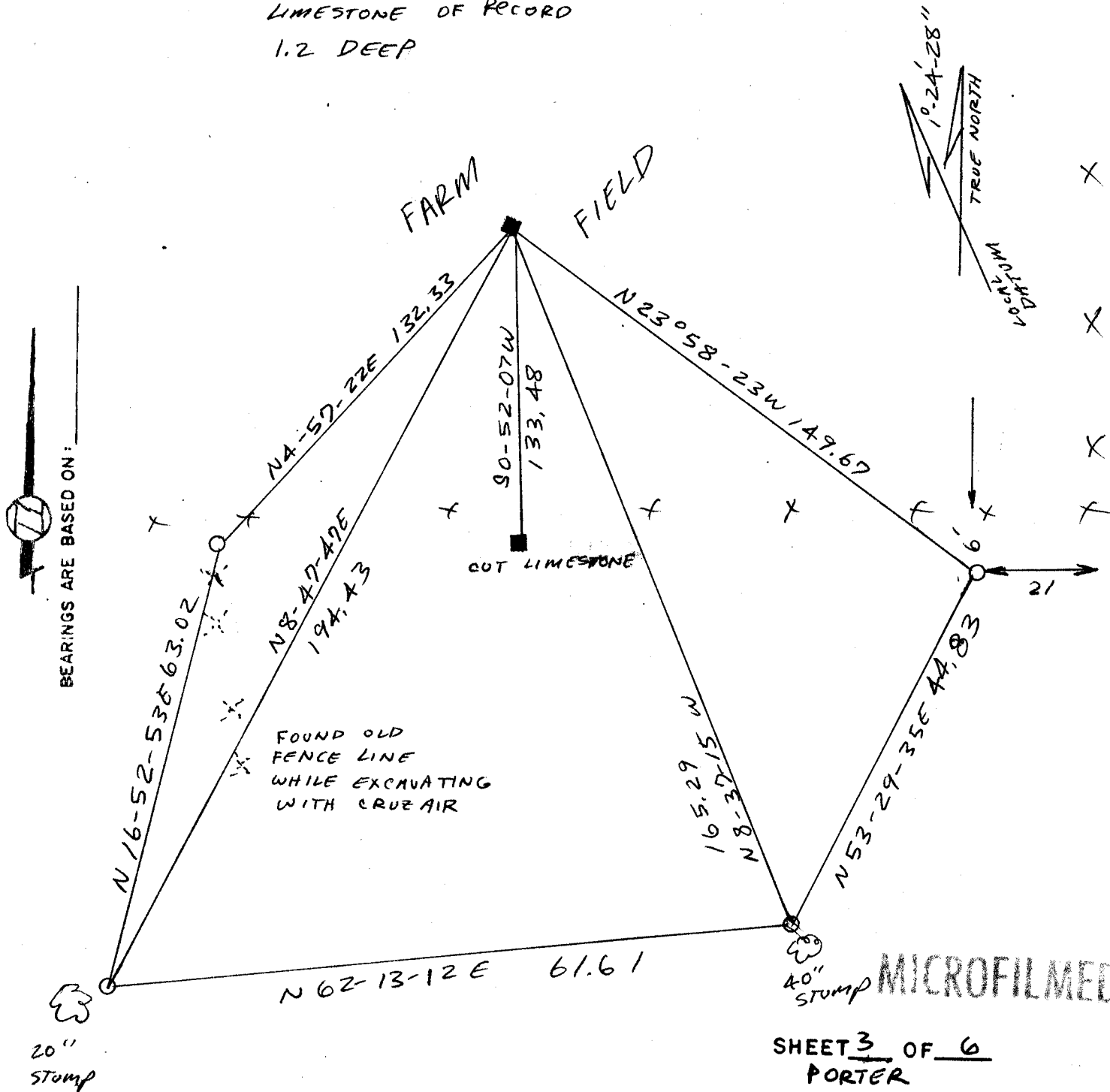
IF AVAILABLE STATE PLANE COORDINATES

North (Y) _____ Eleve. (Z) _____
 East (X) _____ Zone _____
 Hor. Datum _____ Vert. Datum _____

a.)

◆ CORNER MONUMENT
 LIMESTONE OF RECORD
 1.2 DEEP

○ WITNESS MONUMENT $\frac{1}{2}$ X $\frac{1}{4}$ " RE ROD



MICROFILMED

SHEET 3 OF 6
PORTER

CORNER CODE: C/

(b) Describe any record evidence, monument evidence, occupational evidence, testimonial evidence of any other material evidence you considered, and whether the monument was found or placed.

1870 RUGER REMONUMENTATION FIELD NOTES. STATES THAT FOR THE EAST QUARTER CORNER OF SECTION 1 UNION TOWNSHIP HE FOUND THE STUMP OF THE NORTH BEARING TREE & THE REMAINS OF THE STUMP OF THE SOUTH BEARING TREE. ESTABLISHED THE QUARTER CORNER FROM THE THEM. RUGER'S LINEN WHICH IS IN THE REGISTER OF DEEDS OFFICE SHOWS NO JOG BUT ALSO DOES NOT SHOW THE W 1/4 CORNER.

1893 BLEEDORN VOL 2 PG 473 PLACED LIMESTONE 12 X 10 X 4 133.48 NORTH OF THE EAST QUARTER CORNER OF SECTION 1 OF UNION TOWNSHIP. HE SHOWS THAT HE FOUND A MONUMENT AT THE EAST QUARTER CORNER.

1933 SUNNY VOL 3 PG 227 FOUND LIMESTONE 12 X 10 X 4 NORTH 133.5 OF THE 6" X 6" CUT LIMESTONE AT THE EAST QUARTER CORNER OF SECTION 1 UNION TOWNSHIP. SHOWS A DISTANCE OF 2561.5 TO THE CENTER OF SECTION 6.

THIS POSITION NOW IS IN A PLOWED FARM FIELD. I FOUND THE LIMESTONE OF RECORD 1.2 DEEP AND PLACED A MAGNET ON THE SOUTH SIDE.

(c) Was the corner restored through acceptance of (1) an obliterated evidence location, or, (2) a found perpetuated location?

I RESTORED THE CORNER THROUGH ACCEPTANCE OF FOUND EVIDENCE. IT APPEARS THAT BLEEDORN USED RUGER'S MEASUREMENTS TO PRORATE AGAINST THE ORIGINAL GOVERNMENT DISTANCES AND TO COMPUTE THE JOG DISTANCE. USING THIS METHOD PRODUCES A JOG OF 134.20 AND HE SHOWS A DISTANCE OF 133.48 WHICH IS WITHIN THE LEGAL TOLERANCE OF THE DAY. IF I WAS TO PRORATE MY DISTANCES AGAINST THE ORIGINAL GOVERNMENT DISTANCES THEN THE JOG WOULD BE 137.22. SINCE BLEEDORN'S METHOD IS WITHIN THE LEGAL TOLERANCE OF THE 1800s I AM USING HIS CORNER.

(d) Describe any material discrepancy between the location of the corner as restored or reestablished and the location of that corner as previously restored or reestablished by distance and direction.

NONE

(e) Was the corner reestablished through lost corner proportionate methods?

NO

