

U.S. PUBLIC LAND SURVEY MONUMENT RECORD

For Public Land Survey Corners in the

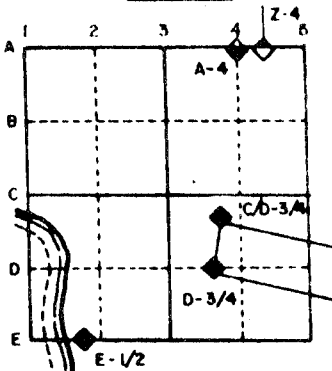
T. 4 N., R. 11 E

CORNER CODE INDEX

	1	2	3	4	5	6	7	8	9	10	11	12	13	14	15	16	17	18	19	20	21	22	23	24	25
A							◆																		
B																									
C	6						5																		
D																									
E																									
F																									
G																									
H																									
I																									
J																									
K																									
L																									
M																									
N																									
O																									
P																									
Q																									
R																									
S																									
T																									
U																									
V																									
W																									
X																									
Y																									
Z																									

PLACE MONUMENT SYMBOL (◆) AT PROPER LOCATION ON ABOVE INDEX

EXAMPLE

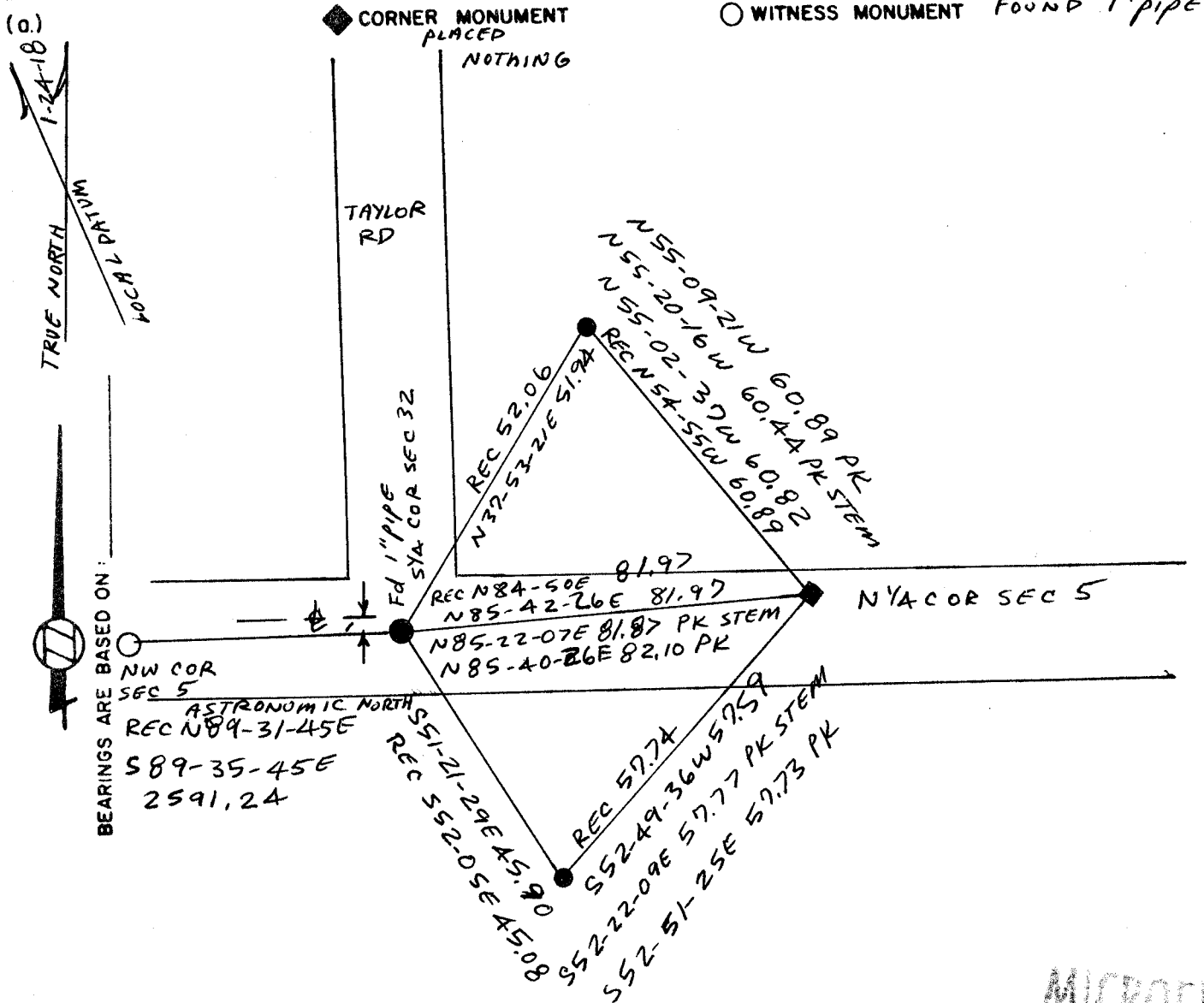


PORTER TWP
ROCK COUNTY WI

IF AVAILABLE
STATE PLANE COORDINATES

North (Y) _____ Eleve. (Z) _____
 East (X) _____ Zone _____
 Hor. Datum _____ Vert. Datum _____

(0.)



FIELD BOOK 3 PAGE # 17

MICROFILMED

SHOW A PLAN VIEW DRAWING DEPICTING THE CORNER MONUMENT AND SURROUNDING PHYSICAL FEATURES, INCLUDING THE EXCAVATION AREA AND DEPTH. THE CORNER MONUMENT SHALL HAVE THE FOLLOWING CHARACTERISTICS: 1) HAVE AT LEAST TWO PREDETERMINED BREAK-OFF POINTS. 2) IF BROKEN, LEAVE A PERMANENTLY MAGNETIZED REMNANT AT THE ORIGINAL POINT. 3) MUST BE EXTENDABLE. 4) THE CAP IS INSCRIBED ROCK COUNTY SURVEY MONUMENT - PENALTY FOR DISTURBING MARKER. 5) OR AN EXISTING CUT LIMESTONE. AN IRON PIPE 1/2" x 4'0" (MINIMUM) MAY BE USED IN AREAS WHERE GROUND WATER IS WITHIN ONE FOOT OF THE SURFACE. IF THE CORNER IS OCCUPIED BY AN IMPROVEMENT (MANHOLE, BURIED CABLE, ETC.) ANY DURABLE, DISTINCT MONUMENT MAY BE USED. CORNERS SHALL BE REFERENCED WITH AT LEAST 4 DURABLE WITNESS MONUMENTS. WITNESS MONUMENTS SHALL BE MADE OF CONCRETE, NATURAL STONE, IRON OR OTHER EQUALLY DURABLE MATERIAL, EXCEPT WOOD. DESCRIBE THE CORNER AND THE WITNESS MONUMENTS.

CORNER CODE:
A 7

(b.) Describe any record evidence, monument evidence, occupational evidence, testimonial evidence or any other material evidence you considered, and whether the monument was found or placed.

1870 RUGER VOL 2 PG 24 ESTABLISHED QUARTER CORNER FROM SECTION CORNERS. SET HH STONE 11 X 5 X 3 & PUT PIECE OF WHITE BRICK ON NORTH & SOUTH. AT SOUTH QUARTER CORNER OF SECTION 32 FOUND HH & SET PIECE OF WHITE BRICK ON NORTH & SOUTH.
1962 BATTERMAN JR. VOL 4 PG 143 FOUND WHITE BRICK AT N 1/4 CORNER OF SECTION 5. SHOWS A JOG OF 81.75.
1969 BATTERMAN JR. VOL 4 PG 421 SET PK AT N 1/4 CORNER OF SECTION 5. FOUND PIPE AT S 1/4 CORNER OF SECTION 32 T5N R11E. SHOWS A JOG OF 81.97.

I FOUND A PIPE AT THE S/4 CORNER OF SECTION 32 AND A PK AND PK STEM AT THE N 1/4 CORNER OF SECTION 5.

(c.) Was the corner restored through acceptance of (1) an obliterated evidence location, or, (2) a found perpetuated location?

I DID NOT ACCEPT THE PK OR PK STEM. I USED THE RECORD ANGLE AND DISTANCE AT THE SOUTH 1/4 CORNER OF SECTION 32. THIS IS IN HARMONY WITH THE FOUND REFERENCE PIPE ON THE NORTH SIDE OF THE ROAD. THE REFERENCE PIPE ON THE SOUTH SIDE OF THE ROAD DOES NOT AGREE WITH THE DISTANCE TO THE SOUTH 1/4 CORNER.

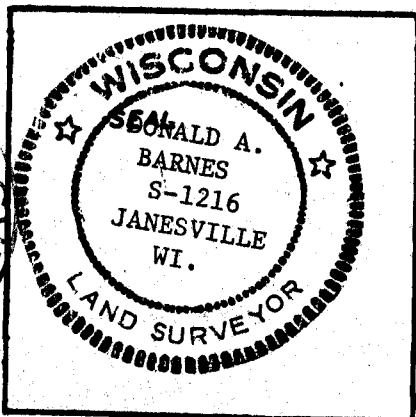
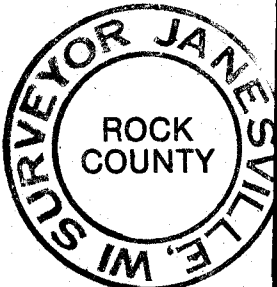
(d.) Describe any material discrepancy between the location of the corner as restored or reestablished and the location of that corner as previously restored or reestablished by distance and direction. Show the discrepancy on the plan view drawing under (b), above. Show the distances between the corner as previously restored or reestablished and (1) the corner as restored or reestablished, and (2) to at least 4 of the witness monuments shown on the drawing in (a), above.

THE DISCREPANCIES ARE NOTED ON THE SKETCH.

(e.) Was the corner reestablished through lost corner proportionate methods? If so, show the method, including the directions and distances to other public land survey corners used as evidence or used for proportioning in determining the corner location.

NO

I, Donald Barnes, hereby certify that the corner points as identified by the corner code index were, in a field survey on AUGUST 8 1988, established, re-established, monumented, re-monumented, recovered or restored as expressed below and in conformance with the regulations and rules as required in the current manual of survey instructions of the United States Department of Interior, Bureau of Land Management.



COUNTY SURVEYOR FILING DATA

Date of Computer Entry _____

Date Received _____

Date Microfilmed _____

Treasurer's Receipt No. _____

Number of Included Sheets _____

AFFIX YOUR LAND SURVEYOR SEAL. CORNER CODE A7