

Paper weight-110# (minimum)

Black nonfading ink required

U.S. PUBLIC LAND SURVEY MONUMENT RECORD

For Public Land Survey Corners In:
T. 4 N. R. 11 E. 4th P.M.
CORNER CODE INDEX

WI ADMINISTRATIVE CODE A-E 7.08 REQUIREMENT
REV 10/23/2004 USMONREC.DWG

PORTER TWP
ROCK COUNTY WI

IF AVAILABLE
ROCK COUNTY COORDINATES PREFERRED

A	1	2	3	4	5	6	7	8	9	10	11	12	13	14	15	16	17	18	19	20	21	22	23	24	25	A
B		6			5			4			3			2			1									B
C																										C
D																										D
E																										E
F																										F
G																										G
H																										H
J																										J
K																										K
L																										L
M																										M
N																										N
O																										O
P																										P
Q																										Q
R																										R
S																										S
T																										T
U																										U
V																										V
W																										W
X																										X
Y																										Y
Z																										Z

North _____ Elev. _____

East _____

Hor. Datum _____ Vert. Datum _____

LATITUDE _____ ELLIPS. HT. _____

LONGITUDE _____

NAD83(91) _____ NETWORK ADJ. YR _____

GPS (X) _____ TRAVERSE (X) _____

BASED ON THE FOLLOWING CONTROL:

1 2 3 4 5 6 7 8 9 10 11 12 13 14 15 16 17 18 19 20 21 22 23 24 25
PLACE MONUMENT SYMBOL **◆** AT PROPER
LOCATION ON ABOVE INDEX

◆ CORNER MONUMENT

○ WITNESS MONUMENT

BEARINGS ARE BASED ON:-----

FIELD BOOK _____ PAGE # _____

SHEET 1 OF 2

SHOW A PLAN VIEW DRAWING DEPICTING THE CORNER MONUMENT AND SURROUNDING
PHYSICAL FEATURES, INCLUDING THE EXCAVATION AREA AND DEPTH.

PLANNING & ZONING COMMITTEE ADOPTED THIS FORM ON 12/2/1982

CORNER CODE Q9

PO2565

(B) Describe any record evidence, monument evidence, occupational evidence, testimonial evidence or any other material evidence you considered, and whether the monument was found or placed.

1895 BROWN 2-496 SET HH 14X9X8 1334.52 TO E 1/4 & SE COR OF SEC 17. WESTERLY 1350.69 TO HH 14X12X4 @ CENTER OF SE 1/4 SEC 17.

1964 BATTERMAN VOL 4 PG 2 FD 19X11X8 HH & REFERENCED SAME.

FD 1" IP 0.1' DEEP. FD SW & SE REFERENCE PIPES. NE & NW REFERENCE PIPES WERE PROBABLY DESTROYED BY INSTALLATION OF CULVERTS & REMOVAL OF FENCE LINES.

C) Was the corner restored through acceptance of (1) an obliterated evidence location, or, (2) a found perpetuated location?

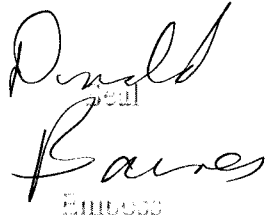
ACCEPTED FD PIPE, WHICH IS IN HARMONY WITH SW REFERENCE PIPE.

D) Describe any material discrepancy between the location of the corner as restored or reestablished and the location of that corner as previously restored or reestablished by distance and direction. Show the discrepancy on the plan view drawing under (a), above. Show the distances between the corner as previously restored or reestablished and (1) the corner as restored or reestablished, and (2) to at least 4 of the witness monuments shown on the drawing in (a), above.

NONE

(E) Was the corner reestablished through lost corner proportionate methods? If so, show the method, including the directions and distances to other public land survey corners used as evidence or used for proportioning the corner location.

I, **Donald Barnes**, hereby certify that the corner location as identified by the corner code index was determined by me under my direction and control and that this U.S. Public Land Survey Monument Record is correct and complete to the best of my knowledge and belief.


Donald Barnes
Emboss

SHEET 1 OF 2

3-18-2009

CORNER CODE

Q-9

A.E. 7.08 REQUIREMENT

E 1/4 CDR
SEC 17

1/16TH
COR

FD 1" PIPE

SE CDR
SEC 17
FD TIES

NAIL NO-02-30W 2669.44
CDR NO-03-48E 2668.02
1999 COMBS 2667.90
1895 BROWN 2669.04

1895 BROWN 1334.52
NO-02-11E 1335.22

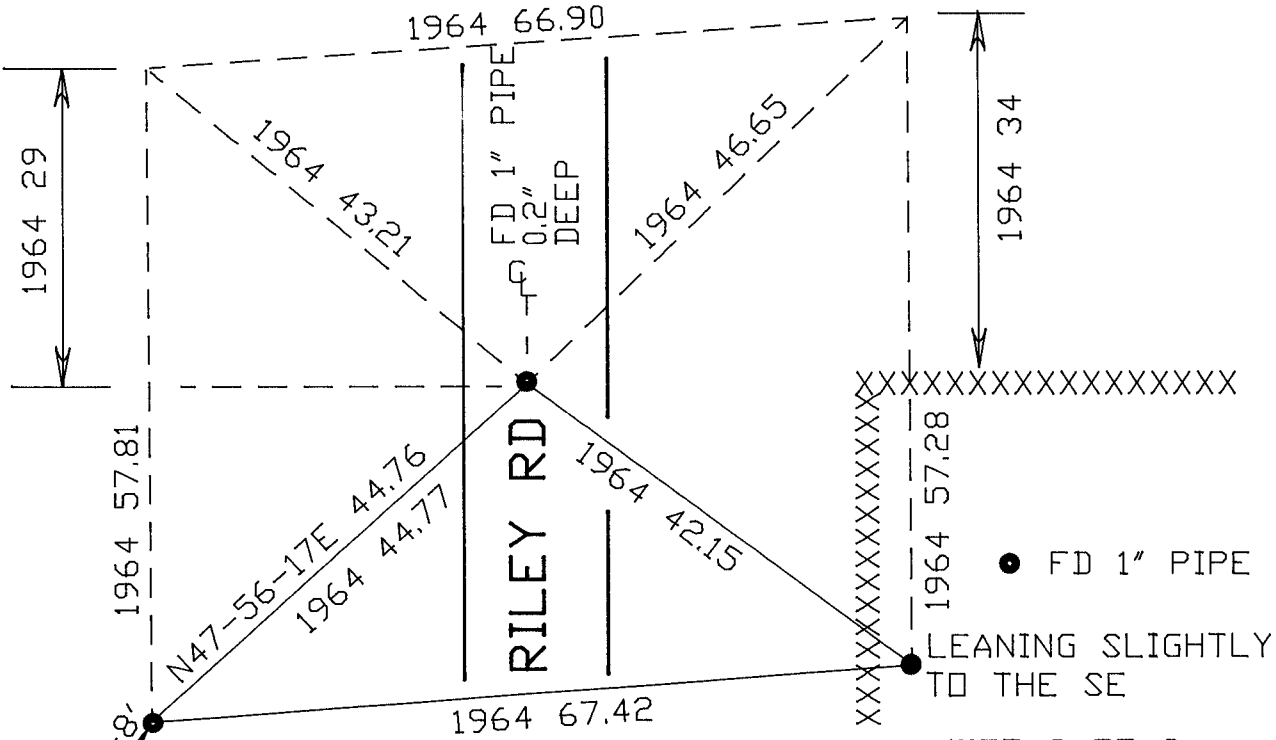
1895 BROWN 1334.52
CDR S0-05-25E 1332.80
NAIL S0-02-48E 1334.22

CDR 179-56-47
NAIL 179-59-22

SE CDR TO NE CDR SEC 17
1999 COMBS 5332.47
NO-03-03W 5332.52
NAIL N00-02-24W 5333.95

NW & NE REF. MON.
SEARCHED & FD NOTHING.
PROBABLY DESTROYED
BY CULVERT INSTALLATION &
FENCE REMOVAL

E 1/16TH CDR
SE 1/4
SEC 17
PORTER TWP



TIES VOL 4 PG 2
OBSERVATION SHEET #1565

EMBOSSED
SEAL

Q-9

Handwritten signature: James
Nov 4, 2009