

Paper weight-110# (minimum)

Black nonfading ink required

U.S. PUBLIC LAND SURVEY MONUMENT RECORD

For Public Land Survey Corners In:

WI ADMINISTRATIVE CODE A-E 7.08 REQUIREMENT

T. 4 N. R. 11 E. 4th P.M.

REV 10/23/2004

USMONREC.DWG

CORNER CODE INDEX

A	2	3	4	5	6	7	8	9	10	11	12	13	14	15	16	17	18	19	20	21	22	23	24	25	A
B		6				5				4				3			2				1				B
C																									C
D																									D
E																									E
F																									F
G																									G
H																									H
J																									J
K																									K
L																									L
M																									M
N																									N
O																									O
P																									P
Q																									Q
R																									R
S																									S
T																									T
U																									U
V																									V
W																									W
X																									X
Y																									Y
Z																									Z

1 2 3 4 5 6 7 8 9 10 11 12 13 14 15 16 17 18 19 20 21 22 23 24 25
PLACE MONUMENT SYMBOL AT PROPER LOCATION ON ABOVE INDEX

PORTER TWP
ROCK COUNTY WI

IF AVAILABLE
ROCK COUNTY COORDINATES PREFERRED

North _____ Elev. _____

East _____

Hor. Datum _____ Vert. Datum _____

LATITUDE _____ ELLIPS. HT. _____

LONGITUDE _____

NAD83(91) _____ NETWORK ADJ. YR _____

GPS (X) _____ TRAVERSE (X) _____

BASED ON THE FOLLOWING CONTROL:

CORNER MONUMENT

WITNESS MONUMENT

BEARINGS ARE BASED ON: _____

FIELD BOOK _____ PAGE # _____

SHEET 1 OF 3

SHOW A PLAN VIEW DRAWING DEPICTING THE CORNER MONUMENT AND SURROUNDING PHYSICAL FEATURES, INCLUDING THE EXCAVATION AREA AND DEPTH.

PLANNING & ZONING COMMITTEE ADOPTED THIS FORM ON 12/2/1982

CORNER CODE 2-9

PO625 SEC32/33

(B) Describe any record evidence, monument evidence, occupational evidence, testimonial evidence or any other material evidence you considered, and whether the monument was found or placed.

1833 (SEP 15) MULLETT & BRINK T4N R11E 4TH MERIDIAN WEST ON SOUTH SIDE SEC 32

2640.0 SET QUARTER SECTION POST BURR OAK 14 N24E 8.58'; BUR OAK 8 NB1W 21.12'

3663.0 ENTER WET PRAIRIE

5280.0 SET POST CORNER SECTIONS 31 & 32 BUR OAK 12 N41E 74.58'; BUR OAK 6 N11W 11.22'

LAND & SAME AS LAST MILE

1833 (SEP 15) MULLETT & BRINK T4N R11E 4TH MERIDIAN WEST ON SOUTH SIDE SEC 33

2640.0 SET QUARTER SECTION POST BUR OAK 14 N34W 35.64'; BUR OAK 8 N52E 47.52'

5280.0 SET POST CORNER SECTIONS 32 & 33 BUR OAK 12 NB6E 184.80'; DOUBLE BUR OAK 20 NB2W 80.52' LAND ROLLING FIRST RATE TIMBER BUR OAK RED ROOT ROSIN ???

1833 HARRISON (NOV) T4N R11E 4TH MER. NORTH BET. 32 & 33

1389.96 BURR OAK 12

2640.0 0 SET A POST FOR COR TO QUARTER SECTIONS {BURR OAK 12 S60W 28.38'; BURR OAK 20 N6E 24.42' {BURR OAK 12; BURR OAK 20} MARKED

5280.0 SET COR TO SECS 28,29,32,33 {BURR OAK 12 S48E 74.58'; BURR OAK 18 S21W 56.10'; BURR OAK 12 N37W 47.52'; BURR OAK 12 N52E 140.58'

LAND ROLLING 2ND RATE TIMBER BURR, RED & WHITE OAK ??? ???? GRASS & WEEDS

1833 HARRISON T3N R11E 4TH MER. NW TY. NORTH BET. SECS 4 & 5

2193.18 BURR OAK 12 & LEAVE MARSH

2640.0 SET POST FOR COR TO 1/4 SECTION BEARING {BURR OAK 12 N17W 85.14'; BURR OAK 12 N13E 69.96' {BURR OAK 12; BURR OAK 12} MARKED

3882.78 BURR OAK 18 INCHES

4969.80 INT. NORTH BDY 6.60' EAST OF POST {BURR OAK 10 S62E 31.02'; BURR OAK 12 S14W 15.84'

LAND 1ST 1/2 MILE IS 3RD RATE MARSH 2ND 1/2 LEVEL 2ND RATE WITH BURR OAK TIMBER INDG. ?? & GRASS

1833 ORIG GOV PLAT NW COR SEC 4 CENTER TWP IS 6.60' WEST OF SW COR SEC 33 PORTER TWP.

1874 RUGER VOL 2 PG 184 #3652 FD OLD STAKE STUMP OF W BT & WHERE STUMPS OF BTS HAD BEEN DUG UP & FD CORNER. SURROUNDED IT WITH 4 HH STONES. 6.60' WEST OF NE COR SEC 5, VAR 6-56 2659.14 TO S 1/4 COR SEC 32.

1875 RUGER VOL 2 PG 185 SEE PAGE 140 6.60' WEST OF NE COR SEC 5

1931 SUNNY VOL 3 PG SHOWS FENCE INT. & 192 2662.5 TO S 1/4 COR SEC 32. SET PIPE UNDER FENCE NEAR S 1/4 COR SEC 32.

1931 SUNNY #3655 SET PIPE 28 EAST OF CENTER OF RD. WESTERLY 1334.4 FROM CENTER OF RD TO FENCE LINE INT., EASTERLY 918.9 FROM CENTER OF RD TO SET PIPE, EASTERLY 1671.5 FROM CENTER OF RD TO FENCE INT., EASTERLY 2662.5 FROM CENTER OF RD TO FENCE INT. UNCLEAR IF IS ESTABLISHING THE 1/4 CORNERS.

SHEET 1 OF 3

CORNER CODE Z-9

Donald Barnes

NOV 4 2009

PO625 SEC32/33
 1976 BARNES VOL 5 PG 205 FB #1 PG 23 SET BERNTSEN W-1-B MON. 6.61 WEST OF 1X24 IRON PIPE 1.5' DEEP @ NE COR SEC 5 & REFERENCED SAME. DUG & FD NOTHING SET BY PRORATION OF RUGER'S 1875 SURVEY OF SEC 32 PORTER TWP & ON LINE WITH S 1/4 COR SEC 32 & S 1/4 COR SEC 33 PORTER TWP. AGREED WITH OCCUPATION. 6' NORTH OF E/W FENCE LINE. ON N/S FENCE LINE. WESTERLY 990 (995.78 RUGER) TO FENCE INT.

1978 LEE VOL 5 PG 467 OCCUPATION NEAR NW COR 277,560; 2,212,575

1999 BARNES A-11 S88-43-35W 2673.39 TO ALUM/CARSONITE @ SW COR SEC 33, N88-47-38E 2665.08 TO SE COR SEC 33, S88-43-35W 23.29 TO ALUM. @ N 1/4 COR SEC 4.

1999 BARNES A-11(1) AT N 1/4 COR SEC 4 PLACED ALUM/CARSONITE ON WEST SIDE & TWO MAGNETS 18" DEEP AND REFERENCED COR. IN 1997 COMBS REQUESTED THE S 1/4 COR OF SEC 33 PORTER TWP. BASED ON THE RECORDS, I BELIEVED THE EXISTING ALUM. MON WAS THE N 1/4 COR SEC 4 AS LEE CALLED FOR. AFTER EXCAVATING FOR THE S 1/4 COR SEC 33 AND NOT FINDING A MOUNUMENT, I ADVISED COMBS THAT THE S 1/4 COR SEC 33 SHOULD BE PLACED MIDWAY BETWEEN THE SE & SW CORNERS OF SEC 33. HE PLACED A PK NAIL APPROXIMATELY 4 TO 5' WEST OF THE ALUM. MON WHICH HE USED FOR HIS SUBDIVISION. ONCE I MEASURED THE NORTH LINE, I CONCLUDED THAT LEE INGOORECTLY CALLED THE ALUM. MON THE N 1/4 COR SEC 4. I BELIEVE THE ALUM. MON. IS ACTUALLY THE S 1/4 COR OF SEC 33. LEE'S FIELD NOTES STATES HE FOUND A 6X6X12" HH ON SIDE AND HE PLACED AN ALUM MON. I FOUND THE LIMITS OF HIS EXCAVATION. SINCE THE N 1/4 COR WAS NOT ESTABLISHED BY THE ORIGINAL GOVE SURVEYOR, I ESTABLISHED IT ON LINE WITH THE S 1/4 COR SEC 33 AND THE SW COR SEC 33 MIWAY BETWEEN THE NW & NE CORNERS OF SEC 4.

1999 BARNES Z-11(1) THE FOUND ALUM. IN THE PAVEMENT THAT LEE CALLED THE N 1/4 COR OF SEC 4 IS ACTUALLY THE S 1/4 COR SEC 33 PORTER TWP. AT THE N 1/4 COR SEC 4 CENTER TWP, I PLACED AN ALUM MON WITH CARSONITE ON WEST SIDE & TWO MAGNETS 18" DEEP. THE N 1/4 COR SEC 4 IS 23.29 WEST OF THE FOUND ALUM. MON. REFERENCED BOTH MONUMENTS. IN 1997, COMBS REQUESTED THE S 1/4 COR SEC 33 PORTER TWP. BASED ON RECORDS, I BELIEVED THE EXISTING ALUM MON WAS THE N 1/4

I USED MY 1999 OBSERVATIONS

C) Was the corner restored through acceptance of (1) an obliterated evidence location, or, (2) a found perpetuated location?

ACCEPTED ALUM. MON & PIPE

D) Describe any material discrepancy between the location of the corner as restored or reestablished and the location of that corner as previously restored or reestablished by distance and direction. Show the discrepancy on the plan view drawing under (a), above. Show the distances between the corner as previously restored or reestablished and (1) the corner as restored or reestablished, and (2) to at least 4 of the witness monuments shown on the drawing in (a), above.

NONE

I, **Donald Barnes**, hereby certify that the corner location as identified by the corner code index was determined by me under my direction and control and that this U.S. Public Land Survey Monument Record is correct and complete to the best of my knowledge and belief.

Seal
 Donald
 Emboss

Barnes

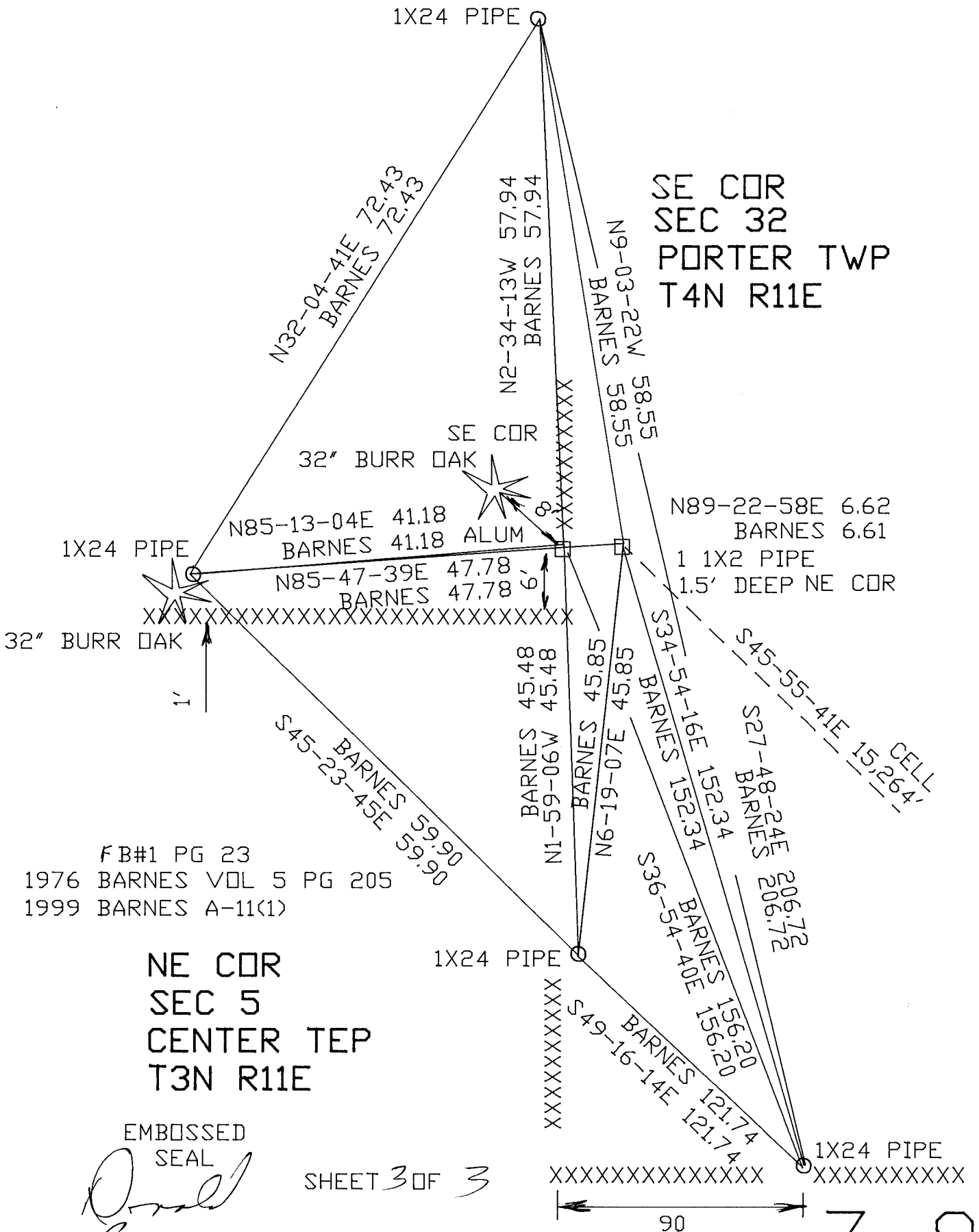
SHEET 2 OF 3

CORNER CODE **Z-9**

Nov 4 2009

A.E. 7.08 REQUIREMENT

SE COR
SEC 32
PORTER TWP
T4N R11E



FB#1 PG 23
1976 BARNES VOL 5 PG 205
1999 BARNES A-11(1)

NE COR
SEC 5
CENTER TWP
T3N R11E

EMBOSSSED
SEAL
Orval Barnes
NOV 4 2009

SHEET 3 OF 3

Z-9