

Paper weight-110# (minimum)

Black nonfading ink required

# U.S. PUBLIC LAND SURVEY MONUMENT RECORD

For Public Land Survey Corners In:  
T. 4 N. R. 11 E. 4th P.M.  
CORNER CODE INDEX

WI ADMINISTRATIVE CODE A-E 7.08 REQUIREMENT  
REV 10/23/2004 USMONREC.DWG

**PORTER** TWP  
**ROCK COUNTY WI**

IF AVAILABLE  
ROCK COUNTY COORDINATES PREFERRED

A	1	2	3	4	5	6	7	8	9	10	11	12	13	14	15	16	17	18	19	20	21	22	23	24	25	A
B		6				5				4				3				2			1					B
C																										C
D																										D
E																										E
F																										F
G																										G
H																										H
J																										J
K																										K
L																										L
M																										M
N																										N
O																										O
P																										P
Q																										Q
R																										R
S																										S
T																										T
U																										U
V																										V
W																										W
X																										X
Y																										Y
Z																										Z

North \_\_\_\_\_ Elev. \_\_\_\_\_  
 East \_\_\_\_\_  
 Hor. Datum \_\_\_\_\_ Vert. Datum \_\_\_\_\_  
 LATITUDE \_\_\_\_\_ ELLIPS. HT. \_\_\_\_\_  
 LONGITUDE \_\_\_\_\_  
 NAD83(91) \_\_\_\_\_ NETWORK ADJ. YR \_\_\_\_\_  
 GPS (X) \_\_\_\_\_ TRAVERSE (X) \_\_\_\_\_  
 BASED ON THE FOLLOWING CONTROL:

PLACE MONUMENT SYMBOL  AT PROPER LOCATION ON ABOVE INDEX

CORNER MONUMENT       WITNESS MONUMENT

BEARINGS ARE BASED ON: -----

PD616

E1/4CORSEC32

(B) Describe any record evidence, monument evidence, occupational evidence, testimonial evidence or any other material evidence you considered, and whether the monument was found or placed.

1833 HARRISON (NOV) T4N R11E 4<sup>TH</sup> MER. NORTH  
BET. 32 & 33

1389.96 BURR OAK 12  
2640.00 SET A POST FOR COR TO QUARTER SECTIONS  
{BURR OAK 12 S60W 28.38'; BURR OAK 20  
N6E 24.42' {BURR OAK 12; BURR OAK 20}  
MARKED  
5280.0 SET COR TO SECS 28,29,32,33 {BURR OAK  
12 S48E 74.58'; BURR OAK 18 S21W 56.10';  
BURR OAK 12 N37W 47.52'; BURR OAK 12  
N52E 140.58'  
LAND ROLLING 2<sup>ND</sup> RATE TIMBER BURR, RED  
& WHITE OAK ??? ???? GRASS & WEEDS

1875 RUGER VOL 2 PG 184 FD HH STONE 23X12X9 SET BY  
STEBBING. STONE CORRECT. ALSO FD S.W. BT & STUMP OF  
NE BT. THE LATER IS 31.02' INSTEAD OF 24.42' DISTANT.  
VAR 6-27 2653.86 TO NE COR SEC 32, VAR 2653.20 TO  
CENTER OF SEC 32, VAR 6-41 5311.35 TO W 1/4 COR SEC  
32.

1976 KIENBAUM CSM VOL 6 PG 126 CI N00-01-10E TO CI @ NE  
COR SEC 32, S89-58-57W 1001.16 TO 1/16TH COR.

1976 BARNES FB#1 PG 16 DUG & FOUND 1.5' DEEP HH 23X12X9  
ON LINE WITH E/W FENCE LINE & 7.5' EAST OF WEST PVMT  
EDGE. SHORT PK TIES. 5.00' TO THE NW & SW OF COR.

1977 BARNES VOL 5 PG 268 FB#1 PG 19 REF SAME SET ALUM  
MON. 7.5' EAST OF WEST PVMT EDGE.

1977 LEE BK29-1 "HAGEN'S ADD." STATES NOTHING ABOUT MON.  
1979 THOM CSM VOL 8 PG 320 CI N00-01-10W ALONG SEC LINE,  
S89-58-57W ALONG SEC LINE 1001.16

1995 KARNS CSM VOL 18 PG 256 ROCK COUNTY MON. EASTERLY  
ALONG SEC LINE 1333.86 TO SET REROD.

1995 SCHROEDER CSM VOL 18 PG 418 ROCK COUNTY MON.

1996 COMBS #8690 STATES NOTHING ABOUT MON. S00-08-46E  
853.24 TO PIPE; S89-58-57W ALONG SEC LINE.

2007 LATHROP CSM 31-308 FD ALUM. MON. S89-58-57W 2657.94  
TO FD PK @ CENTER OF SEC 32 & S0-08-46E ALONG SEC  
LINE TO CENTER OF STH 14.

FD ALUM 2.7' WEST OF CENTER OF PVMT.

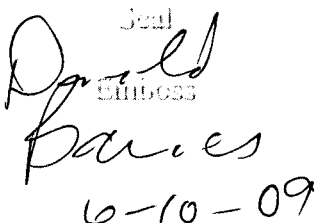
C) Was the corner restored through acceptance of (1) an obliterated evidence location, or, (2) a found perpetuated location?

ACCEPTED

D) Describe any material discrepancy between the location of the corner as restored or reestablished and the location of that corner as previously restored or reestablished by distance and direction. Show the discrepancy on the plan view drawing under (a), above. Show the distances between the corner as previously restored or reestablished and (1) the corner as restored or reestablished, and (2) to at least 4 of the witness monuments shown on the drawing in (a), above.

NONE

I, **Donald Barnes**, hereby certify that the corner location as identified by the corner code index was determined by me under my direction and control and that this U.S. Public Land Survey Monument Record is correct and complete to the best of my knowledge and belief.

Seal  
  
6-10-09

SHEET 1 OF 2

CORNER CODE X-9

A.E. 7.08 REQUIREMENT

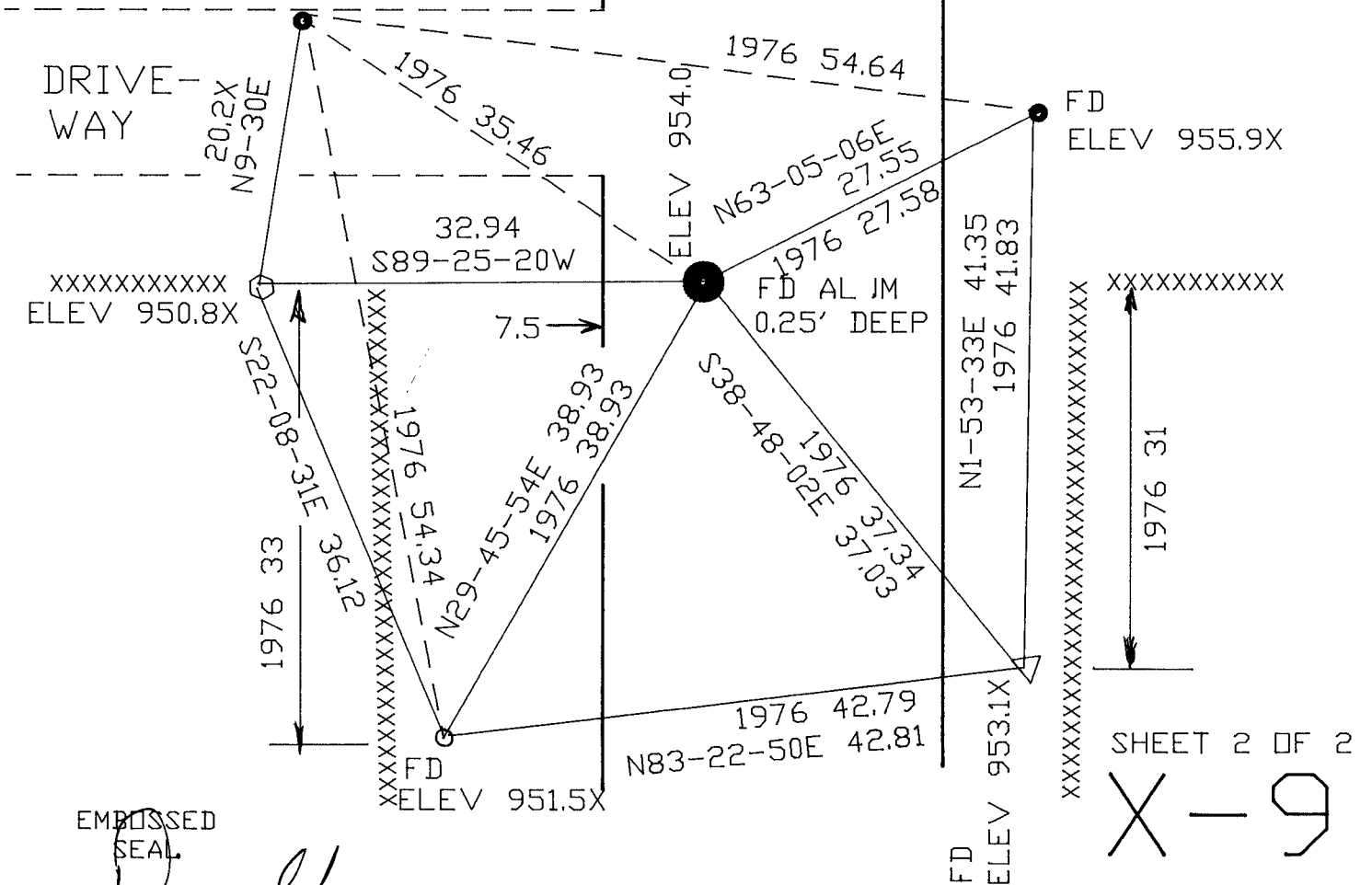
ELEVATIONS BASED ON  
 PHOTOS OF 954.0 @ SEC COR  
 OBSERVATION SHEET #616  
 1976 BARNES FB#1 PG 19  
 & VOL 5 PG 268

E 1/4 COR  
 SEC 32  
 PORTER TWP  
 T4N R11E

- 1 1/2X24 IP WITH CAP
- 1X24 PIPE
- ▽ 2"X24 PIPE
- ◇ FD REROD

RILEY RD

UNDER DRIVEWAY  
 FILL, DID NOT  
 UNCOVER



EMBOSSSED  
 SEAL

*Daryl Barnes*  
 8-03-2009