

Paper weight-110# (minimum)

Black nonfading ink required

U.S. PUBLIC LAND SURVEY MONUMENT RECORD

For Public Land Survey Corners In:
T. 4 N. R. 11 E. 4th P.M.
CORNER CODE INDEX

WI ADMINISTRATIVE CODE A-E 7.08 REQUIREMENT
REV 10/23/2004 USMONREC.DWG

PORTER TWP
ROCK COUNTY WI

IF AVAILABLE
ROCK COUNTY COORDINATES PREFERRED

A	1	2	3	4	5	6	7	8	9	10	11	12	13	14	15	16	17	18	19	20	21	22	23	24	25	A
B																										B
C																										C
D																										D
E																										E
F																										F
G																										G
H																										H
J																										J
K																										K
L																										L
M																										M
N																										N
O																										O
P																										P
Q																										Q
R																										R
S																										S
T																										T
U																										U
V																										V
W																										W
X																										X
Y																										Y
Z																										Z

North _____ Elev. _____

East _____

Hor. Datum _____ Vert. Datum _____

LATITUDE _____ ELLIPS. HT. _____

LONGITUDE _____

NAD83(91) _____ NETWORK ADJ. YR _____

GPS (X) _____ TRAVERSE (X) _____

BASED ON THE FOLLOWING CONTROL:

PLACE MONUMENT SYMBOL AT PROPER LOCATION ON ABOVE INDEX

CORNER MONUMENT

WITNESS MONUMENT

BEARINGS ARE BASED ON: _____

OBSERVATION # 1038
Sheet 1

FIELD BOOK _____ PAGE # _____

SHEET 1 OF 2

SHOW A PLAN VIEW DRAWING DEPICTING THE CORNER MONUMENT AND SURROUNDING PHYSICAL FEATURES, INCLUDING THE EXCAVATION AREA AND DEPTH.

PLANNING & ZONING COMMITTEE ADOPTED THIS FORM ON 12/2/1982

CORNER CODE V-19

PO610

N1/4CORSEC35

(B) Describe any record evidence, monument evidence, occupational evidence, testimonial evidence or any other material evidence you considered, and whether the monument was found or placed.

1833 HARRISON (NOV) T4N R11E 4TH MER. EAST
BET. 26 & 25

247.50	TRAIL GRS N.E.
2640.0	TEMPY 1/4 SEC COR
3977.16	ENTER PRAIRIE
4228.62	TRAIL NORTH
5309.70	INT E BDY 9.9' SOUTH OF POST LAND ROLLING 2 ND RATE TIMBER ALL BUR OAK ??? GRASS & WEEDS WEST COR. WEST BET 26 & 35
1702.14	BURR OAK 12
2654.85	QUARTER SEC COR {BURR OAK 12 S70E 25.74'; BURR OAK 15 S41W 27.06' {BURR OAK 12; BURR OAK 15} MARKED
3593.70	BURR OAK 8
5309.70	SEC COR

1878 RUGER VOL 2 PG 242 FD REMAINS OF OLD STAKE ALSO FD WHERE STUMPS OF BTS HAD BEEN DUG UP SET HH STONE 20X8X7 2640.66 TO SE COR SEC 26, VAR 8-11 TO N 1/4 COR SEC 26. USED TO SUBDIVIDE SEC 26. SET HH 18X7X5 @ CENTER OF SEC 26. 2704.02 FROM W 1/4 COR SEC 26 TO CENTER OF SEC 26.

1952 SUNNY #6840 SET 1 1/2 PIPE AT JUNCTION OF FENCE.

1980 COMBS CSM VOL 10 PG 155 ALUM. MON.

1980 COMBS #3669 FD IRON PIPE, S0-44E 906.77 TO PIN IN WHEELER RD, S88-48-50W 906.44 TO SET PIN ON SEC LINE. USED ALUM. MON @ NW COR SEC 35 FOR LINE

1990 WOODMAN CSM VOL 14 PG 498 FD 1 1/4" PIN, S00-44-00E TO FD 1" PIPE @ S 1/4 COR SEC 35, S88-48-50W TO ALUM. @ NW COR SEC 35.

FD PIPE @ FENCE INT. PLACED CARSONITE POST SW SIDE. ONCE CORN IS DOWN I CAN SEE FROM THE MOST WESTERLY REFERENCE PIPE THE RD INT. @ FOX RD & WHELER RD. THE DISTANCE OF 2646.48 TO THE SE COR SEC 26 IS IN HARMONY WITH RUGER'S 1878 DISTANCE OF 2640.66.

C) Was the corner restored through acceptance of (1) an obliterated evidence location, or, (2) a found perpetuated location?

ACCEPTED FD PIPE

D) Describe any material discrepancy between the location of the corner as restored or reestablished and the location of that corner as previously restored or reestablished by distance and direction. Show the discrepancy on the plan view drawing under (a), above. Show the distances between the corner as previously restored or reestablished and (1) the corner as restored or reestablished, and (2) to at least 4 of the witness monuments shown on the drawing in (a), above.

(E) Was the corner reestablished through lost corner proportionate methods? If so, show the method, including the directions and distances to other public land survey corners used as evidence or used for proportioning the corner location.

I, Donald Barnes, hereby certify that the corner location as identified by the corner code index was determined by me under my direction and control and that this U.S. Public Land Survey Monument Record is correct and complete to the best of my knowledge and belief.

Donald Barnes
Emboss

SHEET 1 OF 2

Barnes

CORNER CODE V-19

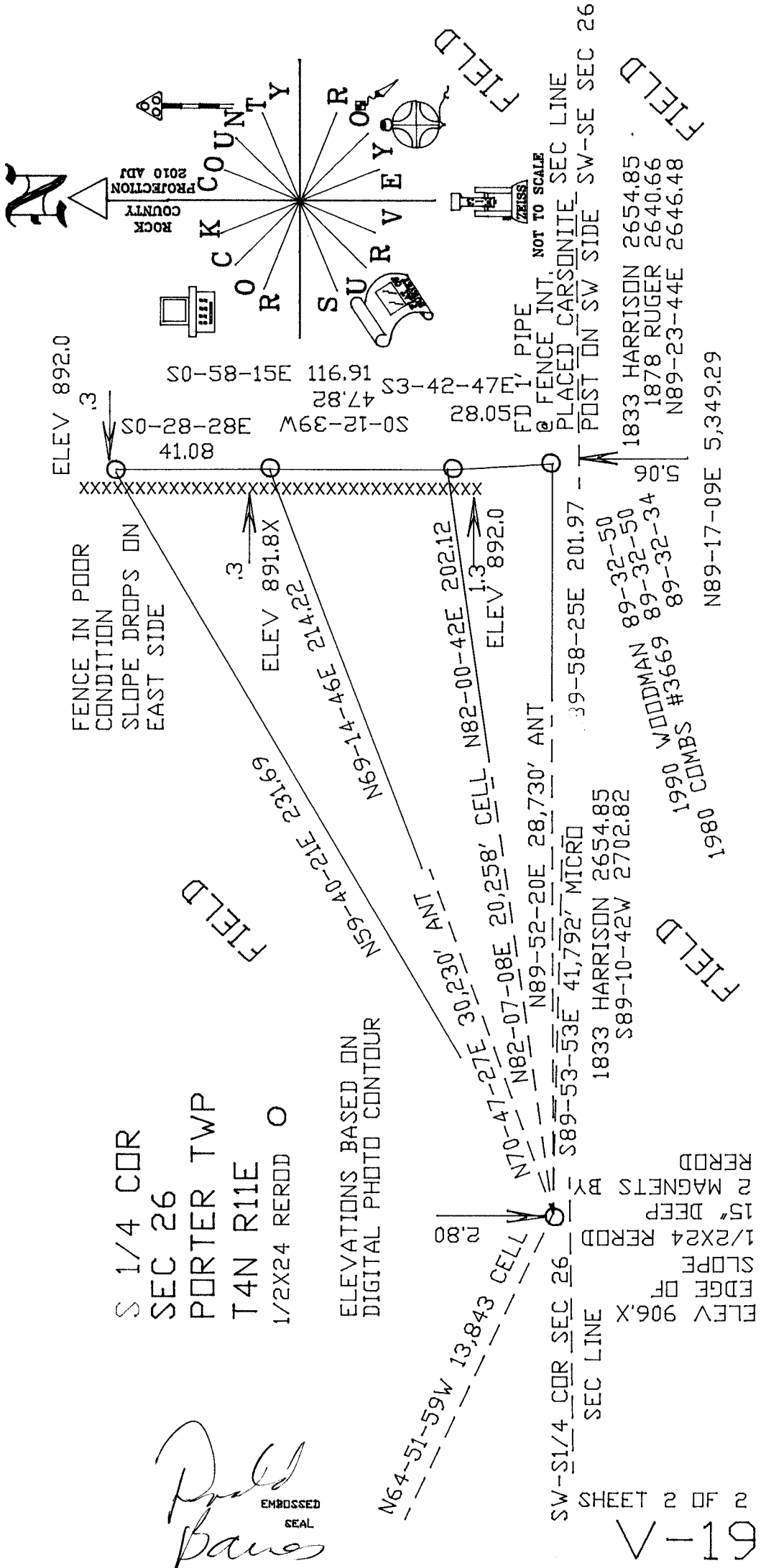
Apr 28, 2010 A.E. 7.08 REQUIREMENT

S 1/4 COR
 SEC 26
 PORTER TWP
 T4N R11E
 1/2X24 RERDD O

ELEVATIONS BASED ON
 DIGITAL PHOTO CONTOUR

D. Paul
 EMBOSSED
 SEAL
D. Paul

Apr 28 2010



SW-1/4 COR SEC 26
 SEC LINE
 ELEV 906.X
 EDGE OF
 SLOPE
 1/2X24 RERDD
 15' DEEP
 2 MAGNETS BY
 RERDD

SHEET 2 OF 2

V-19

N89-17-09E 5,349.29

1833 HARRISON 2654.85
 1878 RUGER 2640.66
 N89-23-44E 2646.48

POST ON SW SIDE SW-SE SEC 26
 PLACED CARBONITE SEC LINE
 @ FENCE INT. NOT TO SCALE
 28.05' PIPE
 FD 1'

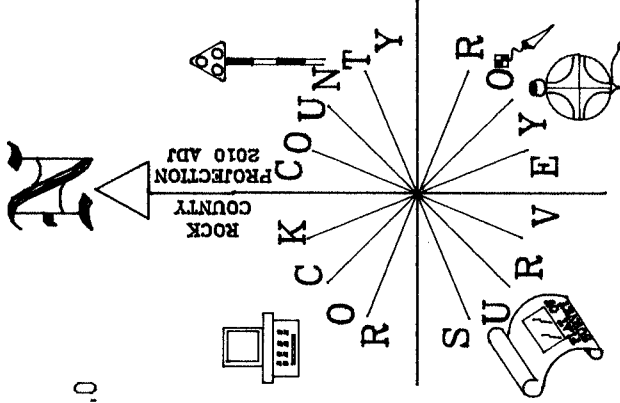
1990 WOODMAN 89-32-50
 89-32-50
 1990 COMBS #3669 89-32-34
 1980 COMBS

N70-47-27E 30,230' ANT
 N82-07-08E 20,258' CELL
 N89-52-20E 28,730' ANT
 S89-53-53E 41,792' MICRD
 1833 HARRISON 2654.85
 S89-10-42W 2702.82

N82-00-42E 202.12
 ELEV 892.0
 1.3

N59-40-21E 231.69
 N69-14-46E 214.22
 ELEV 891.8X
 .3

ELEV 892.0
 S0-28-28E W69-12-39W 41.08
 S0-58-15E 116.91
 S3-42-47E 47.82
 28.05' PIPE



FENCE IN POOR
 CONDITION
 SLOPE DROPS ON
 EAST SIDE

FIELD

FIELD

FIELD

FIELD