

Paper weight-110# (minimum)

Black nonfading ink required

U.S. PUBLIC LAND SURVEY MONUMENT RECORD

For Public Land Survey Corners In:
T. 4 N. R. 11 E. 4th P.M.
CORNER CODE INDEX

WI ADMINISTRATIVE CODE A-E 7.08 REQUIREMENT
REV 10/23/2004 USMONREC.DWG

PORTER TWP
ROCK COUNTY WI

IF AVAILABLE
ROCK COUNTY COORDINATES PREFERRED

A	1	2	3	4	5	6	7	8	9	10	11	12	13	14	15	16	17	18	19	20	21	22	23	24	25	A
B		6			5			4			3			2			1									B
C																										C
D																										D
E																										E
F																										F
G																										G
H																										H
J																										J
K																										K
L																										L
M																										M
N																										N
O																										O
P																										P
Q																										Q
R																										R
S																										S
T																										T
U																										U
V																										V
W																										W
X																										X
Y																										Y
Z																										Z

North _____ Elev. _____

East _____

Hor. Datum _____ Vert. Datum _____

LATITUDE _____ ELLIPS. HT. _____

LONGITUDE _____

NAD83(91) _____ NETWORK ADJ. YR _____

GPS (X) _____ TRAVERSE (X) _____

BASED ON THE FOLLOWING CONTROL:

PLACE MONUMENT SYMBOL AT PROPER LOCATION ON ABOVE INDEX

CORNER MONUMENT

WITNESS MONUMENT

BEARINGS ARE BASED ON: -----

FIELD BOOK _____ PAGE # _____

SHEET 1 OF 3

SHOW A PLAN VIEW DRAWING DEPICTING THE CORNER MONUMENT AND SURROUNDING PHYSICAL FEATURES, INCLUDING THE EXCAVATION AREA AND DEPTH.

PLANNING & ZONING COMMITTEE ADOPTED THIS FORM ON 12/2/1982

CORNER CODE V-9

PO605

SECORSEC29

(B) Describe any record evidence, monument evidence, occupational evidence, testimonial evidence or any other material evidence you considered, and whether the monument was found or placed.

- 1833 HARRISON (NOV) T4N R11E 4TH MER. NORTH
BET. &
- 1833 HARRISON (NOV) T4N R11E 4TH MER. NORTH
BET. 32 & 33
 - 1389.96 BURR OAK 12
 - 2640.0 0 SET A POST FOR COR TO QUARTER SECTIONS
{BURR OAK 12 S60W 28.38'; BURR OAK 20
N6E 24.42' {BURR OAK 12; BURR OAK
20} MARKED
 - 5280.0 SET COR TO SECS 28,29,32,33 {BURR OAK
12 S48E 74.58'; BURR OAK 18 S21W 56.10';
BURR OAK 12 N37W 47.52'; BURR OAK 12
N52E 140.58'
LAND ROLLING 2ND RATE TIMBER BURR, RED
& WHITE OAK ??? ???? GRASS & WEEDS
- 1833 HARRISON (NOV) T4N R11E 4TH MER. EAST
BET. 28 & 33
 - 2640.0 TEMPY 1/4 SEC COR
 - 5280.0 INT. E BDY 5.28' NORTH OF POST
LAND ? SAME
WEST COR. WEST BET 28 & 33
 - 1933.14 BURR OAK 12 IN DIAM
 - 2640.0 QUARTER SEC COR {BURR OAK 12 N28E
27.06'; BURR OAK 18 S8E 52.80' {BURR
OAK 12; BURR OAK 18} MARKED
 - 5280.00 SEC COR
- 1833 HARRISON (NOV) T4N R11E 4TH MER. EAST ON
RANDOM BET. 29 & 32
 - 2640.0 TEMPY 1/4 SEC COR.
 - 5289.90 INT E BDY 23.10' NORTH OF POST LAND @
SAME
WEST COR WEST BET. 29 & 32
 - 2644.95 QUARTER SEC COR. {BURR OAK 14 S5E
50.16'; BURR OAK 14 S62E 9.24'} {BURR
OAK 14; BURR OAK 14} MARKED
 - 5289.90 SEC COR
- 1833 HARRISON (NOV 3RD) T4N R11E 4TH MER. NORTH
BET. 29 & 28
 - 2030.82 BURR OAK 12
 - 2640.0 QUARTER SEC COR. {BURR OAK 18 S36W
33.0'; BURR OAK 12 N27W 48.18' {BURR
OAK 18; BURR OAK 12} MARKED
 - 4499.88 BURR OAK 18
 - 5280.0 COR TO SECS 20,21,28,29 {BURR OAK 12
S32E 31.68'; BURR OAK 10S33W 111.54';
BURR OAK 20 N36W 38.94; BURR OAK 12
N12E 68.64'
LAND ? SAME
- 1864 PORTER TWP RD REC BK 2 PG 4 BEGINNING AT THE 1/4 POST
ON THE EAST LINE OF SEC 29 T4N R11E THENCE SOUTH ON
THE EAST LINE OF SAID SEC 29 AND ON THE EAST LINE OF
SEC 32, 3960, TO A POINT 1320 SOUTH OF THE NE COR OF
SAID SEC 32, SAID POINT BEING THE CENTER OF THE
HIGHWAY LEADING PAST THE DWELLING OF L. WAIT IN A
WESTERLY DIRECTION. THE WHOLE LENGTH OF THE ROAD IS
3/4 OF ONE MILE COURSE GIVEN ACCORDING TO THE TRUE
MERIDIAN. VARIATION OF THE NEEDLE 8. THE LINE OF SAID

SHEET 1 OF 3
CORNER CODE V-9

Donald Barnes
11/04/09

PO605 SECORSEC29

SURVEY TO BE THE CENTER OF SAID HIGHWAY AND THE SAME IS ESTABLISHED 66 IN WIDTH.

- 1871 RUGER VOL 2 PG 68 FD OLD STAKE ALSO FD NE BT & STUMPS OF NW & SW BTS DROVE STAKE DEEP & PUT ON TOP OF IT HH STONE 18X16X13 & SURROUNDED STONE WITH 6 HH STONES, VAR 7-00 1337.16 TO LIMESTONE 16X12X5 @ E 1/16TH COR OF SE 1/4 SEC 29, 2674.32 TO E 1/4 COR SEC 29, VAR 7-07 1329.74 TO HH 13X10X8 @ S 1/16TH COR OF SE 1/4 SEC 29, 2659.47 TO S 1/4 COR SEC 29
- 1871 RUGER VOL 2 PG 69 SEE SEC 29 PG41 VAR 7-00 2674.32 TO W 1/4 COR SEC 28
- 1875 RUGER VOL 2 PG 184 SEE PG 41 VAR6-27 2653.86 TO E 1/4 COR SEC 32.
- 1959 BATTERMAN VOL 4 PG 3 DUG HOLE 12X8X4 FD NOTHING. CORNER APPEARED TO HAVE BEEN REMOVED BY ROAD CONST. DUG 2674 SOUTH OF E 1/4 COR SEC 29, DUG HOLE 12X8X3 & FD NOTHING 1337 SOUTH OF E 1/4 COR SEC 29. THE 1/16TH COR APPEARED TO HAVE BEEN REMOVED BY ROAD CONST.
- 1976 BARNES (AUG) VOL 5 PG 201 & FB #1 PG 16 & 20 FD DEEP HH 18X16X13 SURROUNDED BY HARDHEADS. SHORT PK TIES 10.00 TO SE & SW. REFERENCED SAME.
- 1976 LEE CSM VOL 6 PG 49 CI S00-01-10E 1328.63
- 1976 KIENBAUM CSM 6-126 CI. S00-01-10W TO CI @ E 1/4 COR SEC 32.
- 1977 BARNES VOL 5 PG 268 SET 6" CI MON
- 1982 BARNES VOL 6 PG 279 FD CI S89-30-48E 2665.84 TO S 1/4 COR SEC 28, NO-32-55E 2678.30 TO FD ALUM @ W 1/4 COR SEC 28
- 1992 BARNES VOL 6 PG 428 FD CI NO-33-17E 2678.28 TO W 1/4 COR SEC 28
- 1995 SCHROEDER CSM VOL 18 PG 418 STATES NOTHING ABOUT MON.

FD CI MON. I ALSO USED MY 1993 OBSERVATIONS.

C) Was the corner restored through acceptance of (1) an obliterated evidence location, or, (2) a found perpetuated location?

ACCEPTED FD CI.

D) Describe any material discrepancy between the location of the corner as restored or reestablished and the location of that corner as previously restored or reestablished by distance and direction. Show the discrepancy on the plan view drawing under (a), above. Show the distances between the corner as previously restored or reestablished and (1) the corner as restored or reestablished, and (2) to at least 4 of the witness monuments shown on the drawing in (a), above.

NONE

(E) Was the corner reestablished through lost corner proportionate methods? If so, show the method, including the directions and distances to other public land survey corners used as evidence or used for proportioning the corner location.

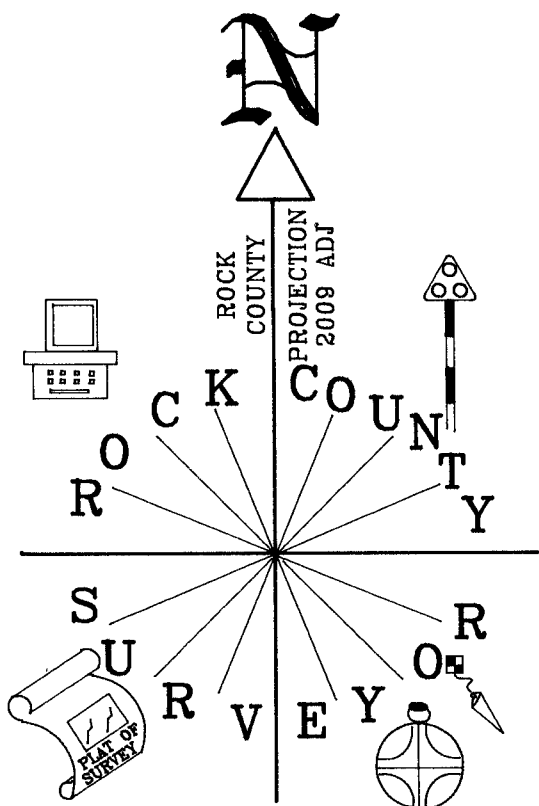
I, **Donald Barnes**, hereby certify that the corner location as identified by the corner code index was determined by me under my direction and control and that this U.S. Public Land Survey Monument Record is correct and complete to the best of my knowledge and belief.

Seal
Donald
Embloss
Barnes
11/04/09

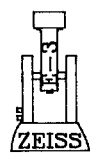
SHEET 2 OF 3

CORNER CODE V-9

A.E. 7.08 REQUIREMENT



- OBS. SHEET #605
- 1976 BARNES VOL 5 PG 201
- FB #1 PG 16 & 20
- FD 1-1/2 PIPE
- FD CAPPED PIPE
- UNDERGROUND CABLE PED.



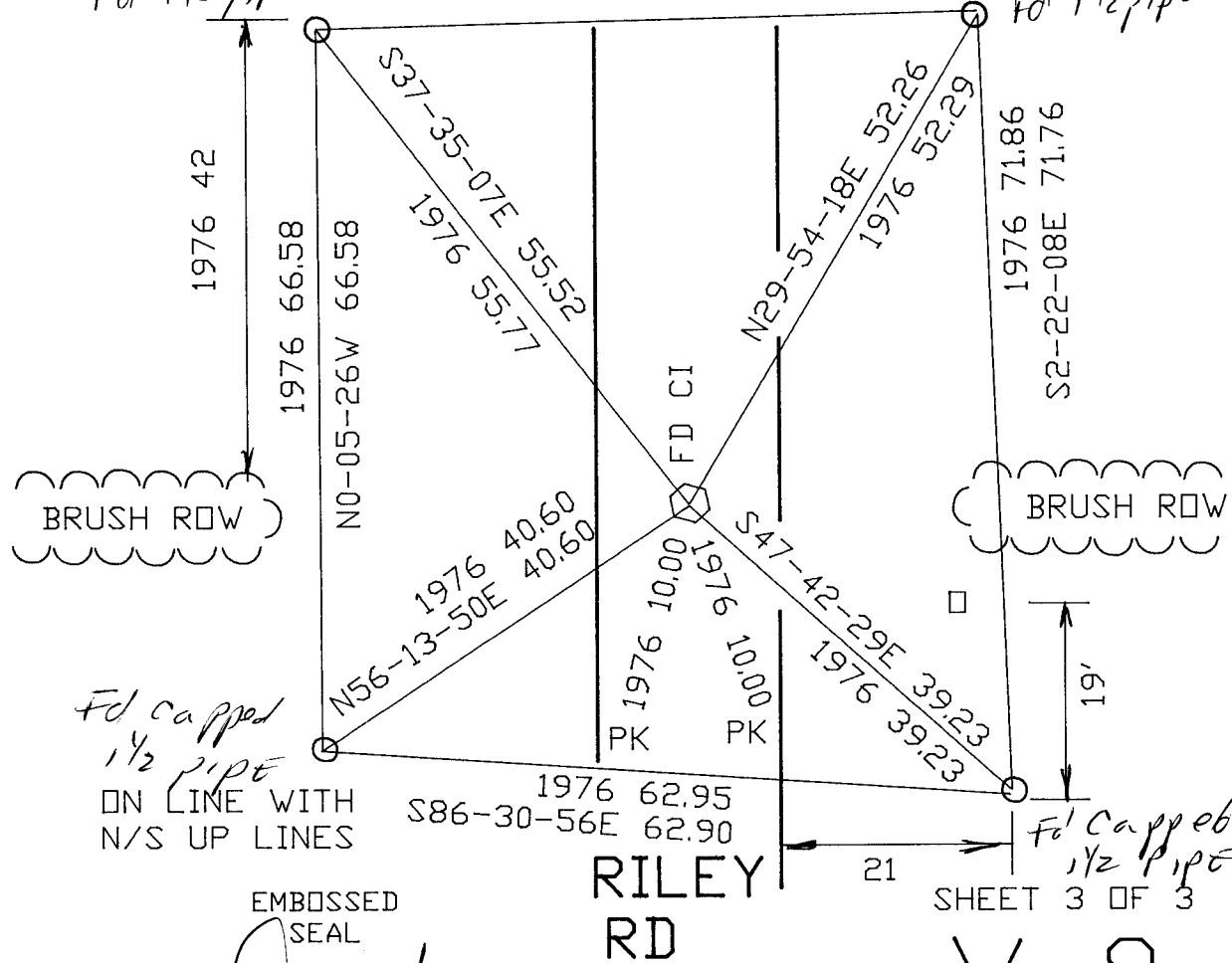
NOT TO SCALE

NE CDR
SEC 32
PORTER TWP
T4N R11E

ON LINE WITH
N/S UP LINES
FD 1 1/2 PIPE

N88-45-30E 59.93
1976 59.88

TOP IS
MUSHROOMED
OUT



EMBOSSED SEAL

Donald Barnes
NOV 4, 2009

RILEY RD

SHEET 3 OF 3

V-9