

# U. S. PUBLIC LAND SURVEY MONUMENT RECORD

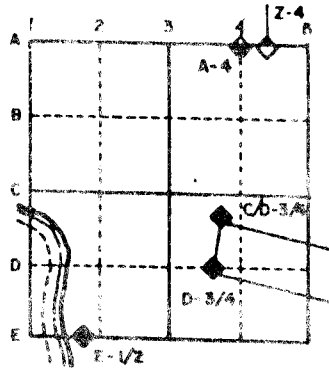
For Public Land Survey Corners in the  
T. 4 N., R. 11 E.

## CORNER CODE INDEX

	1	2	3	4	5	6	7	8	9	10	11	12	13	14	15	16	17	18	19	20	21	22	23	24	25
A																									
B																									
C																									
D																									
E																									
F																									
G																									
H																									
I																									
J																									
K																									
L																									
M																									
N																									
O																									
P																									
Q																									
R																									
S																									
T																									
U																									
V																									
W																									
X																									
Y																									
Z																									

PLACE MONUMENT SYMBOL (◆) AT PROPER LOCATION ON ABOVE INDEX

### EXAMPLE



PORTER TWP  
ROCK COUNTY WI

IF AVAILABLE  
STATE PLANE COORDINATES

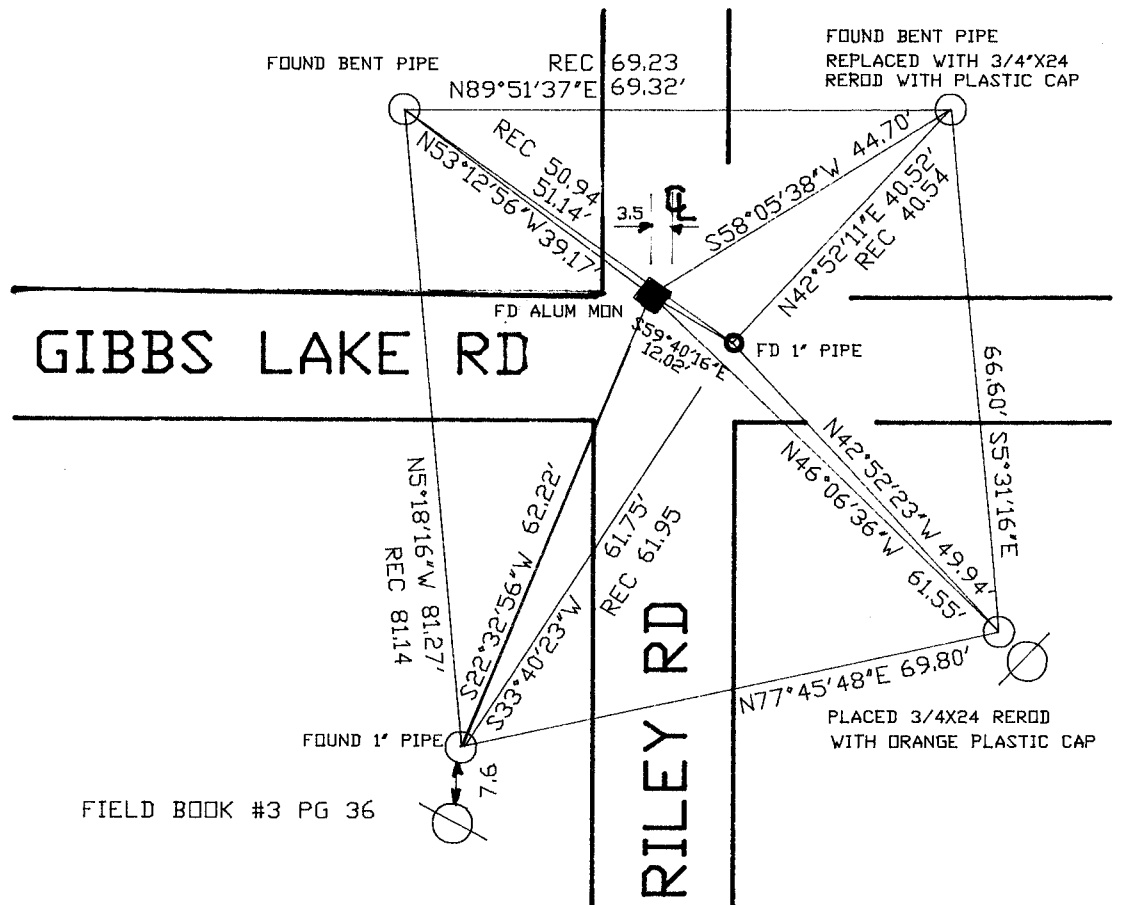
North (Y) \_\_\_\_\_ Eleve. (Z) \_\_\_\_\_  
 East (X) \_\_\_\_\_ Zone \_\_\_\_\_  
 Hor. Datum \_\_\_\_\_ Vert. Datum \_\_\_\_\_

(a.)

◆ CORNER MONUMENT

○ WITNESS MONUMENT

BEARINGS ARE BASED ON:



FIELD BOOK #3 PG 36

FIELD BOOK \_\_\_\_\_ PAGE # \_\_\_\_\_

MICROFILMED

SHOW A PLAN VIEW DRAWING DEPICTING THE CORNER MONUMENT AND SURROUNDING PHYSICAL FEATURES, INCLUDING THE EXCAVATION AREA AND DEPTH. THE CORNER MONUMENT SHALL HAVE THE FOLLOWING CHARACTERISTICS: 1) HAVE AT LEAST TWO PREDETERMINED BREAK-OFF POINTS. 2) IF BROKEN, LEAVE A PERMANENTLY MAGNETIZED REMNANT AT THE ORIGINAL POINT. 3) MUST BE EXTENDABLE. 4) THE CAP IS INSCRIBED: ROCK COUNTY SURVEY MONUMENT - PENALTY FOR DISTURBING MARKER. 5) OR AN EXISTING CUT LIMESTONE. AN IRON PIPE 1 1/2" x 4'0" (MINIMUM) MAY BE USED IN AREAS WHERE GROUND WATER IS WITHIN ONE FOOT OF THE SURFACE. IF THE CORNER IS OCCUPIED BY AN IMPROVEMENT (MANHOLE, BURIED CABLE, ETC.) ANY DURABLE, DISTINCT MONUMENT MAY BE USED. CORNERS SHALL BE REFERENCED WITH AT LEAST 4 DURABLE WITNESS MONUMENTS. WITNESS MONUMENTS SHALL BE MADE OF CONCRETE, NATURAL STONE, IRON OR OTHER EQUALLY DURABLE MATERIAL, EXCEPT WOOD. DESCRIBE THE CORNER AND THE WITNESS MONUMENTS.

CORNER CODE:

T 9

(B) Describe any record evidence, monument evidence, occupational evidence, testimonial evidence or any other material evidence you considered, and whether the monument was found or placed.

1833 HARRISON ORIG QUARTER SEC CORNER. BURR OAK 18 S36W 33, BURR OAK 12 N27W 48.18'. CALLS FOR 2640 TO THE NE AND SE CORNERS OF SECTION 29.

1871 RUGER VOL 2 PG 68 FOUND REMAINS OF OLD STAKE AND WHERE STUMPS OF BTS HAD BEEN DUG UP. SET BURR OAK LOG 2 1/2' LONG 9" IN DIAMETER AND DROVE IRON ROD IN TOP OF LOG AND PUT HH STONES ON TOP OF LOG. CALLS FOR 2674.32 TO THE SW CORNER OF SECTION 28 AND 2661.78 TO THE CENTER OF SECTION 29.

1871 RUGER VOL 2 PG 69 CALLS FOR 2644.62' VAR 7-16 TO THE NE CORNER OF SECTION 29, 2674.32 VAR 7-00 TO THE SE CORNER OF SECTION 29, & 2672.18 TO THE CENTER OF SECTION 28.

1964 BATTERMAN JR. VOL 4 PG 3. FOUND 1" PIPE AND REFERENCED SAME.

1979 BARNES VOL 5 PG 567 FOUND HH SURROUNDED BY 3 HARDHEADS AND 1 LIMESTONE. INSTALLED ALUMINUM MONUMENT ON TOP OF STONE. FOUND IRON PIPE AS REFERENCED. ALUMINUM MONUMENT IS 12.00 TO THE NW. CALLS FOR 1331.96 TO THE S 1/6TH CORNER OF THE NE 1/4 OF SECTION 29.

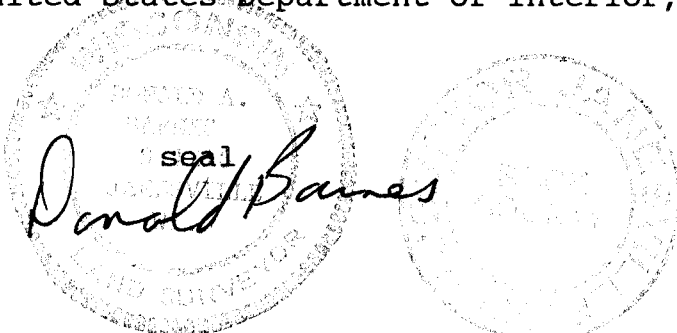
FOUND ALUMINUM MONUMENT AND 1" PIPE. ALUMINUM MONUMENT IS ON LINE WITH NORTH EDGE OF PAVEMENT THAT IS TO THE WEST AND 3.5 WEST OF THE N/S CENTER OF PAVEMENT.

C) Was the corner restored through acceptance of (1) an obliterated evidence location, or, (2) a found perpetuated location?  
ACCEPTED FOUND ALUMINUM MONUMENT.

D) Describe any material discrepancy between the location of the corner as restored or reestablished and the location of that corner as previously restored or reestablished by distance and direction. Show the discrepancy on the plan view drawing under (a), above. Show the distances between the corner as previously restored or reestablished and (1) the corner as restored or reestablished, and (2) to at least 4 of the witness monuments shown on the drawing in (a), above.  
SEE SKETCH FOR DISCREPANCY.

(E) Was the corner reestablished through lost corner proportionate methods? If so, show the method, including the directions and distances to other public land survey corners used as evidence or used for proportioning the corner location.

I, Donald Barnes, hereby certify that the corner points as identified by the corner code index were, in a field survey on, August 3 1992, established, re-established, monumented, re-monumented, recovered or restored as expressed below and in conformance with the regulations and rules as required in the current manual of survey instructions of the United States Department of Interior, Bureau of Land Management.



COUNTY SURVEYOR FILING DATA

Date of computer entry \_\_\_\_\_

Date microfilmed \_\_\_\_\_

Number of included sheets \_\_\_\_\_  
CORNER CODE

AFFIX YOUR LAND SURVEYOR SEAL