

Paper weight-110# (minimum)

Black nonfading ink required

U.S. PUBLIC LAND SURVEY MONUMENT RECORD

For Public Land Survey Corners In:

WI ADMINISTRATIVE CODE A-E 7.08 REQUIREMENT

T. 4N. R. 11E. 4th P.M.

REV 10/23/2004

USMONREC.DWG

CORNER CODE INDEX

PORTER TWP
ROCK COUNTY WI

IF AVAILABLE
ROCK COUNTY COORDINATES PREFERRED

North _____ Elev. _____

East _____

Hor. Datum _____ Vert. Datum _____

LATITUDE _____ ELLIPS. HT. _____

LONGITUDE _____

NAD83(91) _____ NETWORK ADJ. YR _____

GPS (X) _____ TRAVERSE (X) _____

BASED ON THE FOLLOWING CONTROL:

1	2	3	4	5	6	7	8	9	10	11	12	13	14	15	16	17	18	19	20	21	22	23	24	25	
A																									A
B	6					5					4				3					2				1	B
C																									C
D																									D
E																									E
F																									F
G	7					8					9				10					11				12	G
H																									H
J																									J
K																									K
L																									L
M																									M
N																									N
O																									O
P																									P
Q	18					17					16				15					14				13	Q
R																									R
S																									S
T																									T
U																									U
V																									V
W																									W
X																									X
Y																									Y
Z																									Z

1 2 3 4 5 6 7 8 9 10 11 12 13 14 15 16 17 18 19 20 21 22 23 24 25
PLACE MONUMENT SYMBOL AT PROPER LOCATION ON ABOVE INDEX

CORNER MONUMENT

WITNESS MONUMENT

(a) BEARINGS ARE BASED ON: _____

FIELD BOOK _____ PAGE # _____

SHEET 1 OF 2

SHOW A PLAN VIEW DRAWING DEPICTING THE CORNER MONUMENT AND SURROUNDING PHYSICAL FEATURES, INCLUDING THE EXCAVATION AREA AND DEPTH.

PLANNING & ZONING COMMITTEE ADOPTED THIS FORM ON 12/2/1982

CORNER CODE P-19

PO4578 CENTERSEC 23

(B) Describe any record evidence, monument evidence, occupational evidence, testimonial evidence or any other material evidence you considered, and whether the monument was found or placed.

1885 RUGER VOL 2 PG 293 STATES NOTHING ABOUT MON. CALLS FOR THE N/S 1/4 LINE AS VAR 5-18; THE E/W 1/4 LINE BETWEEN THE E 1/4 COR & CENTER OF SEC 23 AS VAR6-05 & 2712.82 FROM THE CENTER TO THE E 1/4 COR SEC 23.
1977 BARNES VOL 5 PG 265 SET ALUM. MON.

FD ALUM. MON. CAP IS STARTING TO DISOLVE. MON. IS 1' SOUTH OF CENTER OF PVMT & 0.25' BELOW PVMT SURFACE.

C) Was the corner restored through acceptance of (1) an obliterated evidence location, or, (2) a found perpetuated location?

ACCEPTED FD ALUM. IT IS IN HARMONY WITH RECORD TIES.

D) Describe any material discrepancy between the location of the corner as restored or reestablished and the location of that corner as previously restored or reestablished by distance and direction. Show the discrepancy on the plan view drawing under (a), above. Show the distances between the corner as previously restored or reestablished and (1) the corner as restored or reestablished, and (2) to at least 4 of the witness monuments shown on the drawing in (a), above.

(E) Was the corner reestablished through lost corner proportionate methods? If so, show the method, including the directions and distances to other public land survey corners used as evidence or used for proportioning the corner location.

I, **Donald Barnes**, hereby certify that the corner location as identified by the corner code index was determined by me under my direction and control and that this U.S. Public Land Survey Monument Record is correct and complete to the best of my knowledge and belief.

Seal

Emboss

May 6, 2008

SHEET 1 OF 2

CORNER CODE **P-19**

A.E. 7.08 REQUIREMENT

Donald Barnes
 EMBOSSED SEAL
 May 6, 2008

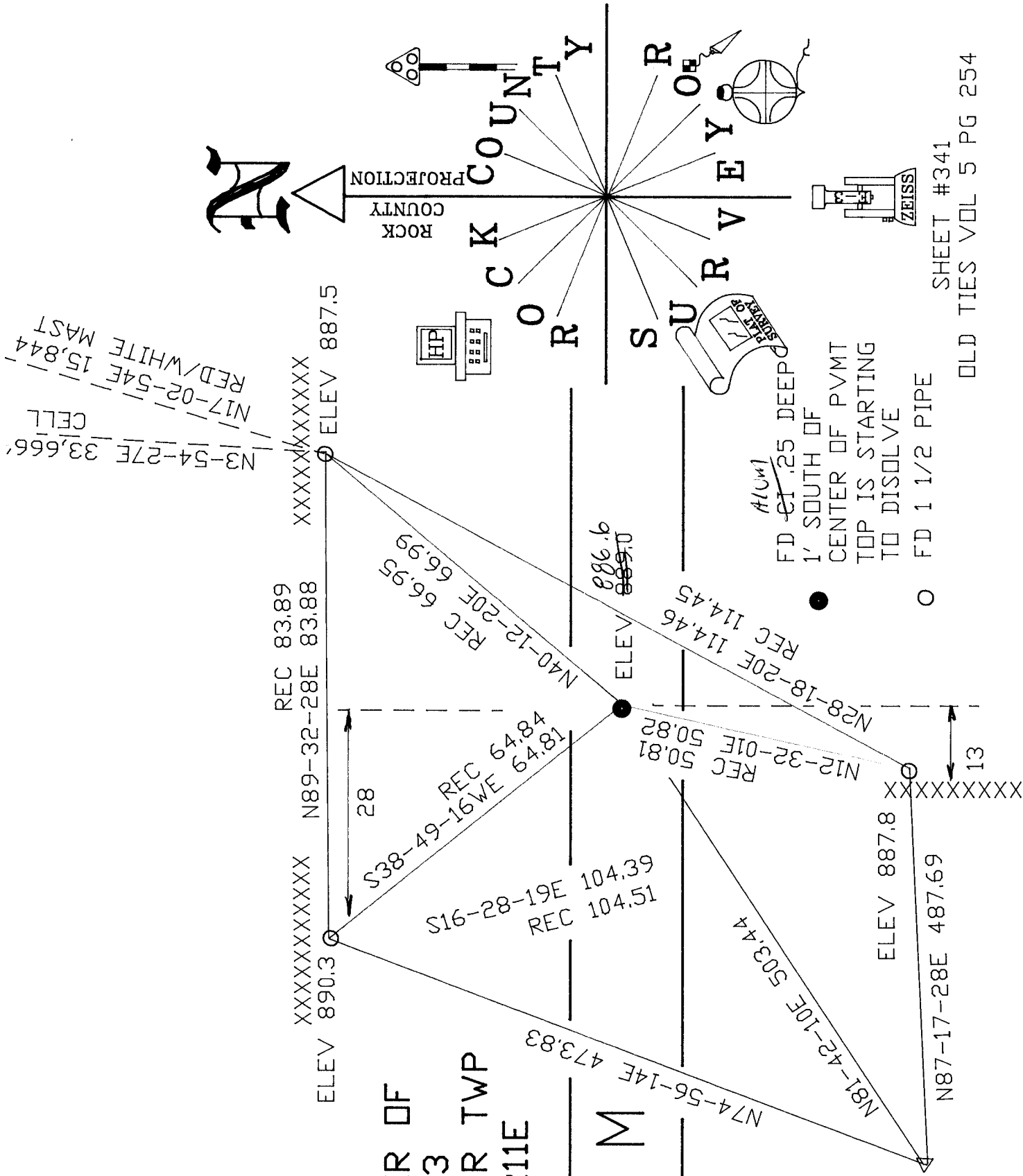
CENTER OF
 SEC 23
 PORTER TWP
 T4N R11E

CTH M

SET 3/4X24 REROD
 ON TOP OF CREST

2 OF 2 SHEETS

P-19



N3-54-27E 33,666'
 RED/WHITE MAST
 N17-02-54E 15,844'
 CELL

SHEET #341
 OLD TIES VOL 5 PG 254