

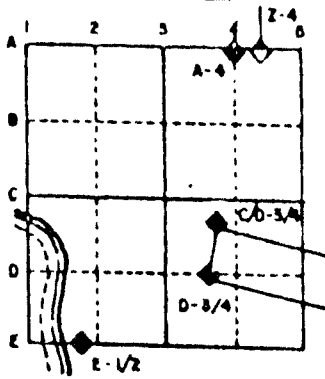
PUBLIC LAND SURVEY MONUMENT RECORD

For Public Land Survey Corners in the
T. 4 N., R. 11 E.
CORNER CODE INDEX

	1	2	3	4	5	6	7	8	9	10	11	12	13	14	15	16	17	18	19	20	21	22	23	24	25
A																									
B																									
C	6																								
D		5																							
E			4																						
F				3																					
G					2																				
H																									
I																									
J	7																								
K		8																							
L			9																						
M				10																					
N					11																				
O						12																			
P							13																		
Q								14																	
R									15																
S										16															
T											17														
U												18													
V													19												
W														20											
X															21										
Y																22									
Z																	23								
																		24							
																			25						
																				26					
																					27				
																						28			
																							29		
																								30	
																									31
																									32
																									33
																									34
																									35
																									36

PLACE MONUMENT SYMBOL (●) AT PROPER LOCATION ON ABOVE INDEX

EXAMPLE



PORTER TWP
ROCK COUNTY WI

IF AVAILABLE
STATE PLANE COORDINATES

North (Y) _____ Eleve. (Z) _____
East (X) _____ Zone _____
Hor. Datum _____ Vert. Datum _____

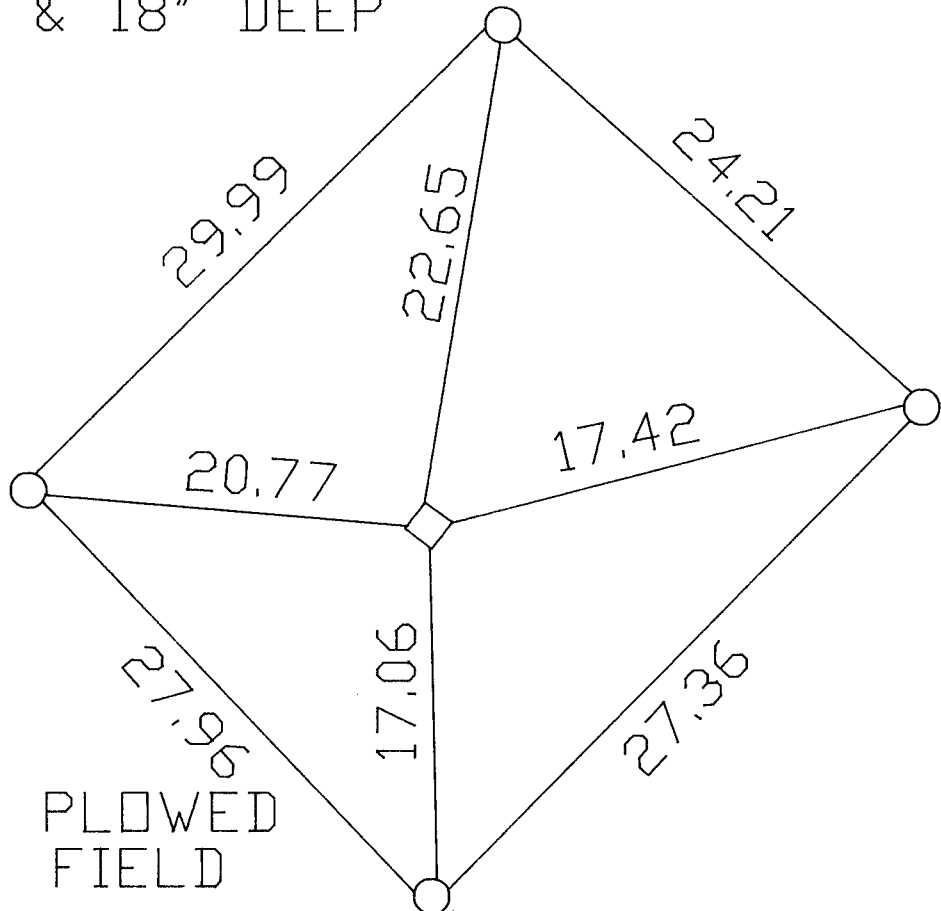
◆ CORNER MONUMENT

○ WITNESS MONUMENT

○ PLACED 3/8" X 12" SPIKE

◇ FOUND 4" DIAM. ALUM. MON.
TOP BROKE OFF - BASE INTACT
& 18" DEEP

BEARINGS ARE BASED ON:



INFORMATION SUPPLIED BY JIM WOODMAN

MICROFILMED
SHEET 1 OF 1

CORNER CODE: N 19

(B) Describe any record evidence, monument evidence, occupational evidence, testimonial evidence or any other material evidence you considered, and whether the monument was found or placed.

1885 RUGER VOL 2 PG 293 DROVE STAKE AND SURROUNDED IT WITH 4 HH STONES. USED TO SUBDIVIDE SECTION 23.

1977 BARNES VOL 6 PG 398 SHOWS 2724.45 TO SW AND 2724.45 SE CORNERS OF SECTION 14.

1977 BARNES VOL 5 PG 256 DUG AND FOUND NOTHING SET ALUM. MON.

1977 BARNES VOL 5 255 PLACED CORNER MIDWAY AND ON LINE BETWEEN THE NE AND NW CORNERS OF SECTION 23.

FOUND BASE OF ALUMINUM MONUMENT INTACT AND 18" DEEP. MONUMENT IS IN A PLOWED FIELD.

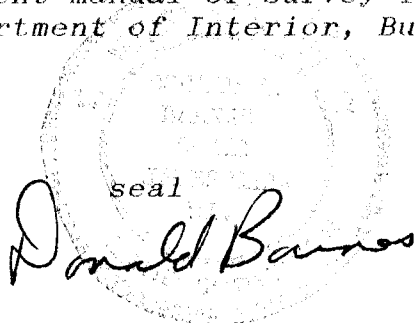
C) Was the corner restored through acceptance of (1) an obliterated evidence location, or, (2) a found perpetuated location?

ACCEPTED FOUND ALUMINUM MONUMENT.

D) Describe any material discrepancy between the location of the corner as restored or reestablished and the location of that corner as previously restored or reestablished by distance and direction. Show the discrepancy on the plan view drawing under (a), above. Show the distances between the corner as previously restored or reestablished and (1) the corner as restored or reestablished, and (2) to at least 4 of the witness monuments shown on the drawing in (a), above.

(E) Was the corner reestablished through lost corner proportionate methods? If so, show the method, including the directions and distances to other public land survey corners used as evidence or used for proportioning the corner location.

I, Donald Barnes, hereby certify that the corner points as identified by the corner code index were, in a field survey on, March 8, 1991, established, re-established, monumented, re-monumented, recovered or restored as expressed below and in conformance with the regulations and rules as required in the current manual of survey instructions of the United States Department of Interior, Bureau of Land Management.

 seal
Donald Barnes

COUNTY SURVEYOR FILING DATA

Date of computer entry _____

Date microfilmed _____

Number of included sheets _____

CORNER CODE

AFFIX YOUR LAND SURVEYOR SEAL

N19