

Paper weight-110# (minimum)

Black nonfading ink required

U.S. PUBLIC LAND SURVEY MONUMENT RECORD

For Public Land Survey Corners In:

WI ADMINISTRATIVE CODE A-E 7.08 REQUIREMENT

T. 4 N. R. 11 E. 4th P.M.

REV 10/23/2004

USMONREC.DWG

CORNER CODE INDEX

PORTER TWP

ROCK COUNTY WI

IF AVAILABLE

ROCK COUNTY COORDINATES PREFERRED

A	1	2	3	4	5	6	7	8	9	10	11	12	13	14	15	16	17	18	19	20	21	22	23	24	25	A
B		6					5				4					3				2					1	B
C																										C
D																										D
E																										E
F																										F
G																										G
H																										H
J																										J
K																										K
L																										L
M																										M
N																										N
O																										O
P																										P
Q																										Q
R																										R
S																										S
T																										T
U																										U
V																										V
W																										W
X																										X
Y																										Y
Z																										Z

North _____ Elev. _____

East _____

Hor. Datum _____ Vert. Datum _____

LATITUDE _____ ELLIPS. HT. _____

LONGITUDE _____

NAD83(91) _____ NETWORK ADJ. YR _____

GPS (X) _____ TRAVERSE (X) _____

BASED ON THE FOLLOWING CONTROL:

◆ CORNER MONUMENT

○ WITNESS MONUMENT

(a)

BEARINGS ARE BASED ON: -----

FIELD BOOK _____ PAGE # _____

SHEET 1 OF 3

SHOW A PLAN VIEW DRAWING DEPICTING THE CORNER MONUMENT AND SURROUNDING PHYSICAL FEATURES, INCLUDING THE EXCAVATION AREA AND DEPTH.

PLANNING & ZONING COMMITTEE ADOPTED THIS FORM ON 12/2/1982

CORNER CODE N-9

P0565

NECORSEC20

(B) Describe any record evidence, monument evidence, occupational evidence, testimonial evidence or any other material evidence you considered, and whether the monument was found or placed.

1833 HARRISON (NOV) T4N R11E 4TH MER. NORTH
 BET. 20 & 21
 2640.0 QUARTER SEC COR. BURR OAK 24 S73W
 15.84'; BURR OAK 12 N73E 43.56'J
 BURR OAK 24; BURR OAK 12}MARKED
 5280.0 SET COR TO SECS 16,17,20,21 IN ??
 SOUTHERN EDGE OF PRAIRIE
 BURR OAK 18 S13W 181.50'; BURR OAK
 12 S47E 277.20' NO OTHER NEAR
 LAND TIMBER & ?? SAME AS BEFORE

1833 HARRISON (NOV 4RD) T4N R11E 4TH MER. EAST ON
 RANDOM BET. 17 & 20
 297.0 LEAVE TIMBER & ENTER PRAIRIE
 2640.0 TEMPY 1/4 SEC COR
 5289.90 INT. E BDY 33.00' NORTH OF POST LAND
 MOSTLY ROLLING 1ST RATE PRAIRIE-GROWTH
 GRASS & WEEDS
 WEST COR. WEST BET 17 & 20
 2644.95 QUARTER SEC COR {SET POST & RAISED A
 MOUND OF EARTH & SOD
 5289.90 SEC COR

1833 HARRISON (NOV 4RD) T4N R11E 4TH MER. EAST ON
 RANDOM BET. 17 & 20
 298.0 LEAVE TIMBER & ENTER PRAIRIE
 2641.0 TEMPY 1/4 SEC COR
 5289.90 INT. E BDY 33.00' NORTH OF POST LAND
 MOSTLY ROLLING 1ST RATE PRAIRIE-GROWTH
 GRASS & WEEDS
 WEST COR. WEST BET 17 & 20
 2644.96 QUARTER SEC COR {SET POST & RAISED A
 MOUND OF EARTH & SOD
 5289.90 SEC COR

1833 HARRISON (NOV) T4N R11E 4TH MER. NORTH
 BET. 16 & 17
 1017.72 ROAD E & W TO DOUGHERTYS
 2640.0 QUARTER SEC COR SET POST & RAISED A
 MOUND OF EARTH & SOD
 5280.0 COR TO SECS 8,9,16,17 SET A POST AND
 RAISED A MOUND OF EARTH & SOD LAND 1ST
 RATE ROLLING PRAIRIE GROWTH GRASS &
 WEEDS

1863 LOCKE VOL 1 PG 190 FD STUMPS OF B. TREES & OLD
 STAKE SET LARGE HARD HEAD 15X11X7 VAR 8-00' 2636.70
 TO HH 19X18X7 @ N 1/4 COR SEC 21 & VAR 8-00
 5273.40 TO LARTE IRREGULAR HH 17X12XB @ NE COR SEC
 21. [SET N 1/4 COR SEC 21 ON LINE & MIDWAY BETWEEN
 NW & NE CORNERS OF SEC 21.]

1895 BROWN VOL 2 PG 496 FD HH SET BY LOCKE 1334.52 TO
 HH 14X9XB @ E 1/16TH COR OF SE 1/4 SEC 17, 2669.04
 TO E 1/4 COR SEC 17

1964 BATTERMAN VOL 4 PG 2 FD 19X11XB HH & REFERENCED
 SAME. @ E 1/16TH COR OF SE 1/4 SEC 17 FD 14X9XB &
 REFERENCED SAME.

1970 WIDOT CTH M #13070 SHOWS CORNER BUT DID NOT USE IT
 OR STATE ANYTHING ABOUT THE MON

1977 BARNES VOL 5 PG 274 FD PK & 10" DEEP FD HH
 SURROUNDED BY HH. REFERENCED SAME. ON LINE WITH
 E/W FENCE LINES. SHORT PK TIES: 3.00 TO EAST & 3.00
 SOUTH

1977 BARNES VOL 5 PG 275 2666.72 BETWEEN THE NE COR SEC
 20 & THE E 1/4 COR SEC 20

SHEET 1 OF 4 3

CORNER CODE N-9

Donald Barnes

3/17/2009

PD565 NECORSEC20

1999 COMBS #7496 PK N00-10-24E 2667.90 TO E 1/4 COR SEC 17
2000 COMBS #7642 SAME AS #7496
2002 COMBS CSM VOL 25 PG 105 PK 2667.24 TO ALUM @ W 1/4 COR SEC 21.
2003 COMBS CSM VOL 26 PG 221 PK S0-16-05E 2665.66 TO ALUM @ E 1/4 COR SEC 20, S89-33-44W 2705.28 TO ALUM @ N 1/4 COR SEC 20
2005 LATHROP CSM VOL 28 PG 260 FD PK N89-33-44W 2705.28 TO ALUM @ N 1/4 COR SEC 20.
2005 COMBS #15163 FD PK NAIL N89-46-09W 1361.22 TO FD HARD HEAD STONE, FROM HARD HEAD STONE TO ALUM MON @ N 1/4 COR SEC 20 IS N89-21-09W 1344.08

FD NAIL @ CENTER OF PVMT. FD SW, SE, EAST, & NE REFERENCE PIPES.

C) Was the corner restored through acceptance of (1) an obliterated evidence location, or, (2) a found perpetuated location?

ACCEPTED THE ORIGINAL GOV. SURVEY COR. AS THE INTERSECTION OF THE REFERENCE MONUMENTS.

D) Describe any material discrepancy between the location of the corner as restored or reestablished and the location of that corner as previously restored or reestablished by distance and direction. Show the discrepancy on the plan view drawing under (a), above. Show the distances between the corner as previously restored or reestablished and (1) the corner as restored or reestablished, and (2) to at least 4 of the witness monuments shown on the drawing in (a), above.

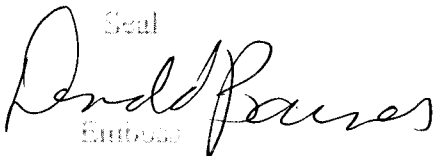
COMBS'S 1999 SURVEY REPORTS A DISTANCE OF 2667.90 TO THE E 1/4 COR SEC 17, WHICH IS WITHIN 0.05 OF MY DISTANCE OF 2667.95. HIS 2002 DISTANCE OF 2667.24 AND 2003 DISTANCE OF 2665.66 TO THE E 1/4 COR SEC 20 IS DIFFERENT BY 1.58'. MY DISTANCE OF 2667.11 TO THE W 1/4 COR SEC 21 IS 0.13 DIFFERENT FROM HIS 2002 MEASUREMENT AND 1.45' DIFFERENT FROM HIS 2003 MEASUREMENT. HIS 2003 MEASUREMENT TO THE FD NAIL IS THE SAME AS MY MEASUREMENT TO THE FD NAIL. THIS INDICATES THE NAIL PROBABLY WAS PLACED BETWEEN 2002 AND 2003.

THE TWO POSITIONS APPEAR TO HAVE OCCURRED BETWEEN 2002 AND 2003. THIS IS BASED ON COMB'S RECORD DISTANCE IN 2002 TO THE E 1/4 COR SEC 20 AND HIS 2003 RECORD DISTANCE.

(E) Was the corner reestablished through lost corner proportionate methods? If so, show the method, including the directions and distances to other public land survey corners used as evidence or used for proportioning the corner location.

NO

I, **Donald Barnes**, hereby certify that the corner location as identified by the corner code index was determined by me under my direction and control and that this U.S. Public Land Survey Monument Record is correct and complete to the best of my knowledge and belief.

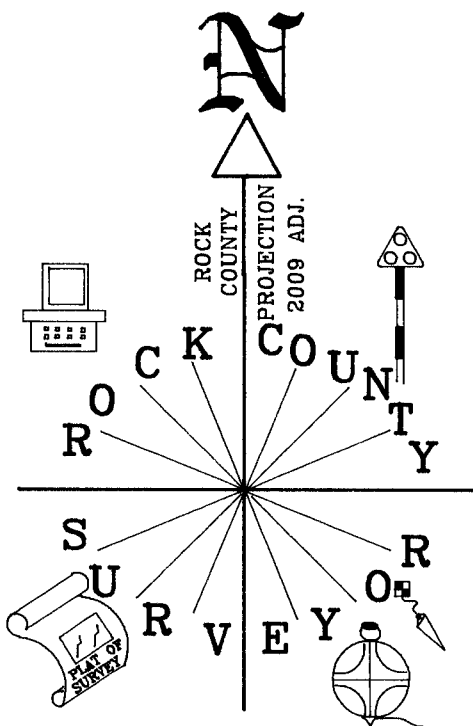
Seal

Notary

SHEET 2 OF 3

3/17/2009

CORNER CODE **N-9**

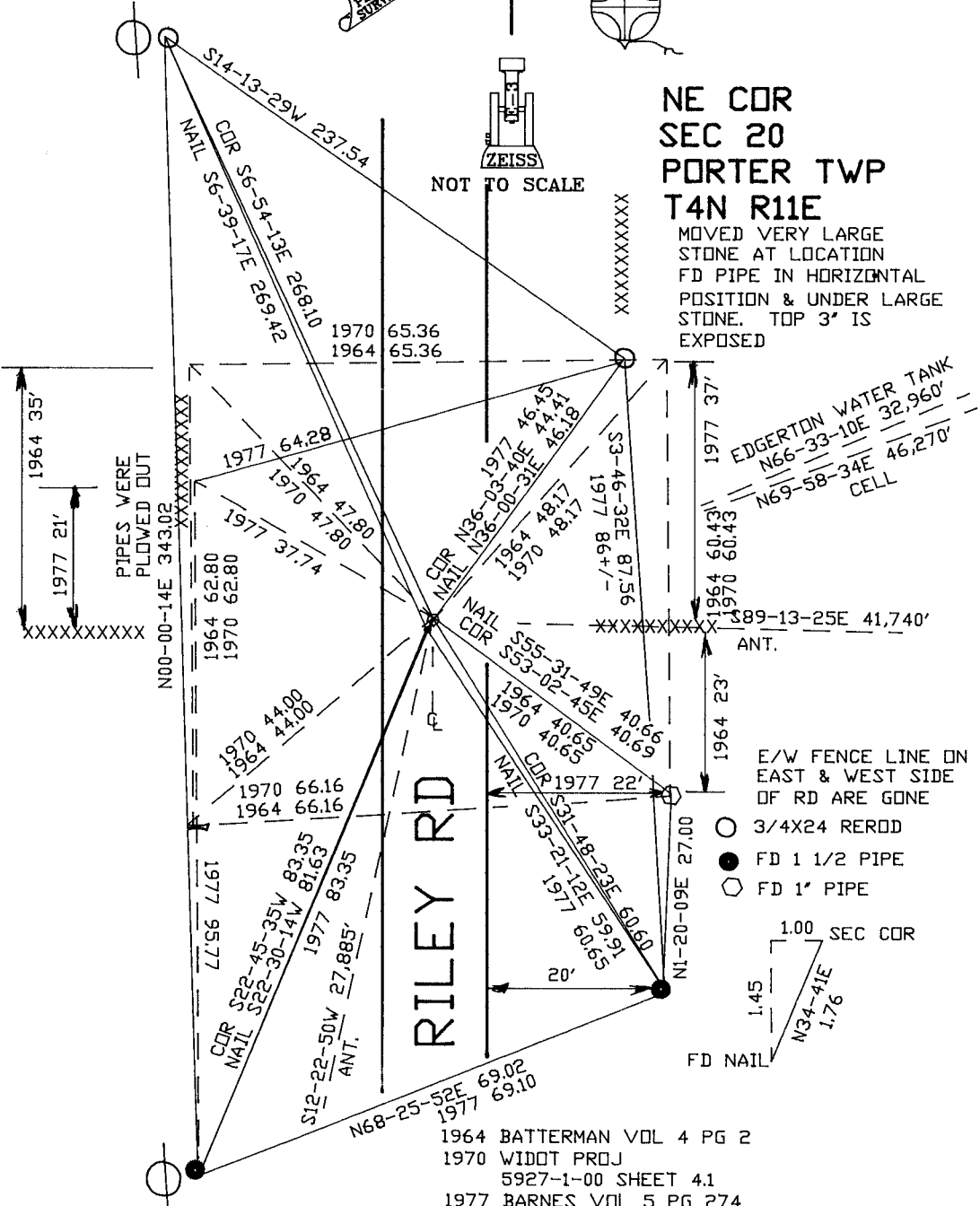
A.E. 7.08 REQUIREMENT



CDR 3.00 PK
1977
3.00 PK

NE CDR
SEC 20
PORTER TWP
T4N R11E

MOVED VERY LARGE
STONE AT LOCATION
FD PIPE IN HORIZONTAL
POSITION & UNDER LARGE
STONE. TOP 3' IS
EXPOSED



OBSERVATION SHEET #1565
E/W FENCE LINE ON
EAST & WEST SIDE OF
RD ARE GONE.

SHEET 3 OF 3

1964 BATTERMAN VOL 4 PG 2
1970 WIDOT PROJ
5927-1-00 SHEET 4.1
1977 BARNES VOL 5 PG 274

EMBOSSSED SEAL
Donald N-9

Barnes
3/17/2009