

Paper weight-110# (minimum)

Black nonfading ink required

U.S. PUBLIC LAND SURVEY MONUMENT RECORD

For Public Land Survey Corners In:

WI ADMINISTRATIVE CODE A-E 7.08 REQUIREMENT

T. 4 N. R. 10E. 4th P.M.

REV 10/23/2004

USMONREC.DWG

CORNER CODE INDEX

PORTER TWP

ROCK COUNTY WI

IF AVAILABLE

ROCK COUNTY COORDINATES PREFERRED

A	1	2	3	4	5	6	7	8	9	10	11	12	13	14	15	16	17	18	19	20	21	22	23	24	25	A
B																										B
C																										C
D																										D
E																										E
F																										F
G																										G
H																										H
J																										J
K																										K
L																										L
M																										M
N																										N
O																										O
P																										P
Q																										Q
R																										R
S																										S
T																										T
U																										U
V																										V
W																										W
X																										X
Y																										Y
Z																										Z

North _____ Elev. _____

East _____

Hor. Datum _____ Vert. Datum _____

LATITUDE _____ ELLIPS. HT. _____

LONGITUDE _____

NAD83(91) _____ NETWORK ADJ. YR _____

GPS (X) _____ TRAVERSE (X) _____

BASED ON THE FOLLOWING CONTROL:

PLACE MONUMENT SYMBOL AT PROPER LOCATION ON ABOVE INDEX

CORNER MONUMENT

WITNESS MONUMENT

(a)

BEARINGS ARE BASED ON: _____

FIELD BOOK _____ PAGE # _____

SHEET 1 OF 2

SHOW A PLAN VIEW DRAWING DEPICTING THE CORNER MONUMENT AND SURROUNDING PHYSICAL FEATURES, INCLUDING THE EXCAVATION AREA AND DEPTH.

PLANNING & ZONING COMMITTEE ADOPTED THIS FORM ON 12/2/1982

CORNER CODE 49

PO556

E1/4CORSEC17

(B) Describe any record evidence, monument evidence, occupational evidence, testimonial evidence or any other material evidence you considered, and whether the monument was found or placed.

- 1833 HARRISON (NOV) T4N R11E 4TH MER. NORTH
BET. 16 & 17
1017.72 ROAD E & W TO DOUGHERTYS
2640.0 QUARTER SEC COR SET POST & RAISED A
MOUND OF EARTH & SOD
5280.0 COR TO SECS 8,9,16,17 SET A POST AND
RAISED A MOUND OF EARTH & SOD LAND 1ST
RATE ROLLING PRAIRIE GROWTH GRASS &
WEEDS
- 1895 BROWN VOL 2 PG 496 SET HH 16X8X7 SURROUNDED BY
HHS. 1334.52 TO HH 14X9X8 @ E 1/16TH COR SE 1/4 SEC
17, 2669.04 TO SE COR SEC 17, 1349.54 TO HH 16X8X5
POINT UP @ N 1/16TH COR OF SE 1/4 SEC 17, 2698.74 TO
HH 16X12X9 @ CENTER OF SEC 17, 5373.72 TO W 1/4 COR
SEC 17.
- 1964 BATTERMAN VOL 4 PG 2 FD 16X8X7 HH SURROUNDED BY 4
HH. REFERENCED SAME.
- 1978 BARNES VOL 5 PG 495 FD PK NAIL SET BY N. TRUE (WPL)
HE SET IT FROM THE NW & NE REFERENCE PIPES WHICH I
FOUND. SET ALUM. MON. PK SHORT TIES: 2.00 NW & 2.00
SW. COR IS WEST OF CENTER OF PVMT.
- 1978 THOM CSM VOL 8 PG 212 FD ALUM. SB9-48-48W 2697.92
TO SET IP @ CENTER OF SEC 17, SB9-48-48W 5372.92 TO
FD ALUM. @ W 1/4 COR SEC 17
- 1986 BARNES VOL 6 PG 360 & FB#1 PG 69 FD ALUM. MON NOO-
43-32E 2664.52 TO NE COR SEC 17, NB9-27-55W 5372.62
TO FD ALUM @ W 1/4 COR SEC 17
- 1988 BARNES J-5 FD ALUM. MON NOO-35-12E 2667.14 TO SE
COR SEC 7
- 1999 COMBS #7496 STATES NOTHING ABOUT COR. WEST 5372.78
TO W 1/4 COR SEC 17, SO-10-24W 2667.90 TO PK @ SEC
COR SEC 17, & NO-11-03W 2664.56 TO PK @ NE COR SEC
17. LEGEND CALLS FOR SET 3/4X24 PIN.
- 1999 COMBS SM VOL 23 PG 60 PK 2664.57 TO PK @ NW COR
SEC 16
- 1999 COMBS CSM VOL 22 PG 435 PK 2664.57 TO PK @ NW COR
SEC 16
- 2000 COMBS #7642 SAME AS #7496
- 2003 KARNS #14565 SYMBOL CALLS FOR ROCK CO. SEC COR FD.

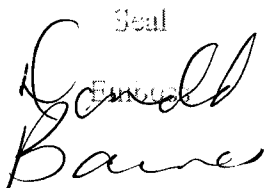
FD ALUM. MON. 0.2' DEEP

C) Was the corner restored through acceptance of (1) an obliterated evidence location, or, (2) a found perpetuated location?

ACCEPTED FD MON.

D) Describe any material discrepancy between the location of the corner as restored or reestablished and the location of that corner as previously restored or reestablished by distance and direction. Show the discrepancy on the plan view drawing under (a), above. Show the distances between the corner as previously restored or reestablished and (1) the corner as restored or reestablished, and (2) to at least 4 of the witness monuments shown on the drawing in (a), above.

I, Donald Barnes, hereby certify that the corner location as identified by the corner code index was determined by me under my direction and control and that this U.S. Public Land Survey Monument Record is correct and complete to the best of my knowledge and belief.

Seal

 Donald Barnes

SHEET 1 OF 2

Aug 19, 2009

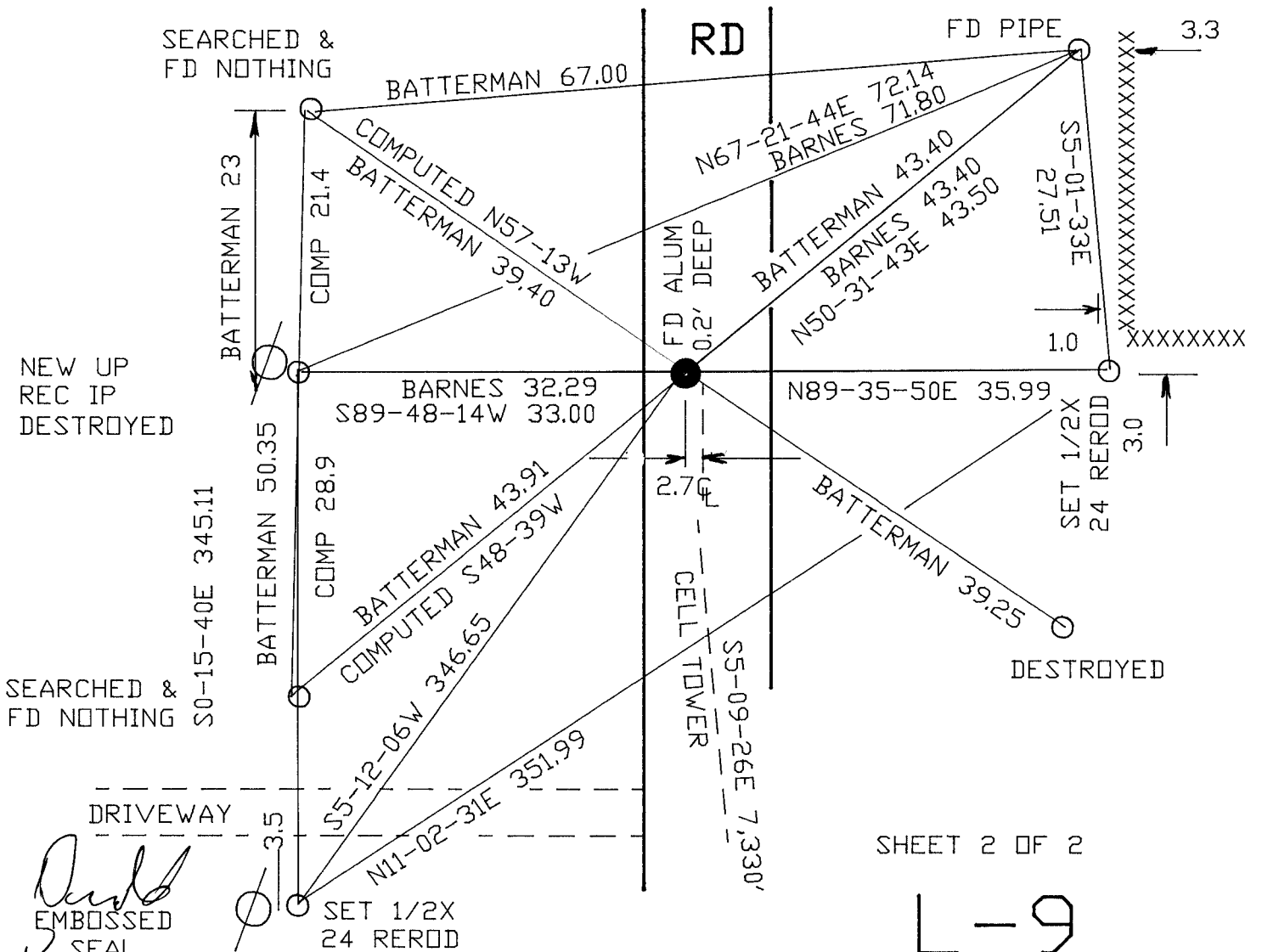
CORNER CODE **L-9**

A.E. 7.08 REQUIREMENT

E 1/4 COR
 SEC 17
 PORTER TWP
 T4N R11E

1964 BATTERMAN VOL 4 PG 2
 1978 BARNES VOL 5 PG 495 & FB #1 PG 69

RILEY



SHEET 2 OF 2

L-9