

U.S. PUBLIC LAND SURVEY MONUMENT RECORD

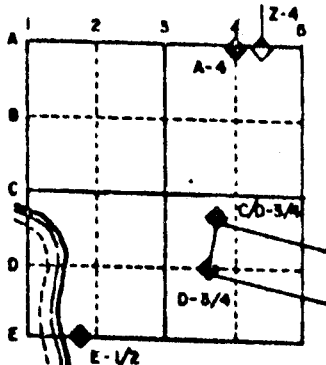
For Public Land Survey Corners in the
T. 4 N., R. 11 E.

CORNER CODE INDEX

	1	2	3	4	5	6	7	8	9	10	11	12	13	14	15	16	17	18	19	20	21	22	23	24	25
A																									
B																									
C	6																								
D																									
E																									
F																									
G																									
H	7	8	9	10	11	12	13	14	15	16	17	18	19	20	21	22	23	24	25	26	27	28	29	30	
I																									
J																									
K																									
L	18	17	16	15	14	13	12	11	10	9	8	7	6	5	4	3	2	1							
M																									
N																									
O																									
P	19	20	21	22	23	24	25	26	27	28	29	30	31	32	33	34	35	36							
Q																									
R																									
S																									
T	30	29	28	27	26	25	24	23	22	21	20	19	18	17	16	15	14	13	12	11	10	9	8	7	
U																									
V																									
W																									
X	31	32	33	34	35	36																			
Y																									
Z																									

PLACE MONUMENT SYMBOL (◆) AT PROPER LOCATION ON ABOVE INDEX

EXAMPLE



PORTER TWP
ROCK COUNTY WI

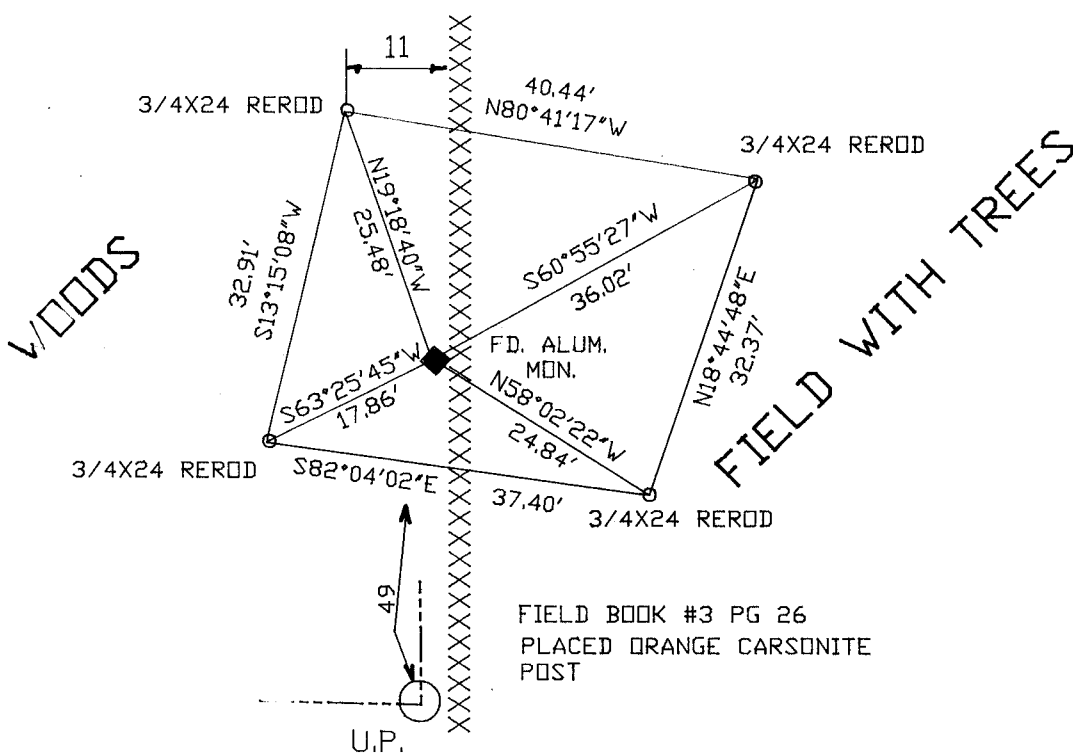
IF AVAILABLE
STATE PLANE COORDINATES

North (Y) _____ Eleve. (Z) _____
 East (X) _____ Zone _____
 Hor. Datum _____ Vert. Datum _____

◆ CORNER MONUMENT

○ WITNESS MONUMENT

BEARINGS ARE BASED ON: ASSUMED



MICROFILMED

SHEET _____ OF _____

CORNER CODE: U 19

(B) Describe any record evidence, monument evidence, occupational evidence, testimonial evidence or any other material evidence you considered, and whether the monument was found or placed.

1833 HARRISON ORIGINAL GOVERNMENT SURVEY. PLACED CORNER 2640 FROM THE SE CORNER AND 2692.80 FROM THE SW CORNER OF SECTION 11. WHITE OAK 8 S60W 60. EAST MEANDER POST IS 210.54 FEET WEST OF QUARTER CORNER. FIRST PART OF NOTES CALLS FOR THE EAST MEANDER POST AS 157.74 FEET WEST OF THE TEMPORARY 1/4 CORNER.

1854 STEBBIN PLAT OF SURVEY USED THE CORNER FOR A LARGE SURVEY IN SECTION 14. STATES NOTHING ABOUT THE CORNER. CALLS FOR DISTANCE OF 384.16 FEET TO A MEANDER CORNER THAT IS TO THE SOUTH. SHOWS A MEANDER LINE ALONG THE RIVER.

1886 RUGER VOL 2 PG 282 DROVE STAKE SURROUNDED BY 3 H.H. STONES. SHOWS CORNER ON LINE WITH SW AND SE CORNERS OF SECTION 11 AND 2722.50 FEET FROM EACH. USED CORNER TO SUBDIVIDE SECTION 11.

1980 YOUNG CSM VOL 10 PG 148-150 CALLS FOR THE NORTH/SOUTH QUARTER LINE AND THE N1/4 CORNER OF SECTION 14. STATES NOTHING ABOUT THE CORNER.

1989 RIESOP PLAT OF SURVEY. CALLS FOR THE WEST LINE OF THE NW 1/4 OF THE NE 1/4 OF SECTION 14 PER CSM VOL 10 PG 148-150.

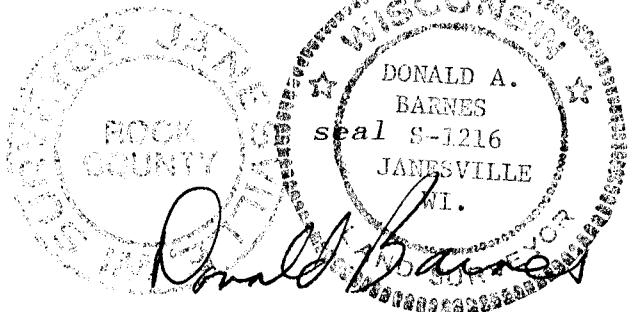
C) Was the corner restored through acceptance of (1) an obliterated evidence location, or, (2) a found perpetuated location?

FOUND ALUMINUM MONUMENT. PLACED ORANGE CARSONITE POST ON WEST SIDE. HH ON EAST AND NORTH SIDE. DID NOT SEARCH FOR OTHER HH BECAUSE OF THE FROZEN GROUND. IN HARMONY WITH RUGER'S SURVEY.

D) Describe any material discrepancy between the location of the corner as restored or reestablished and the location of that corner as previously restored or reestablished by distance and direction. Show the discrepancy on the plan view drawing under (a), above. Show the distances between the corner as previously restored or reestablished and (1) the corner as restored or reestablished, and (2) to at least 4 of the witness monuments shown on the drawing in (a), above.

(E) Was the corner reestablished through lost corner proportionate methods? If so, show the method, including the directions and distances to other public land survey corners used as evidence or used for proportioning the corner location.

I, Donald Barnes, hereby certify that the corner points as identified by the corner code index were, in a field survey on, February 12, 1991, established, re-established, monumented, re-monumented, recovered or restored as expressed below and in conformance with the regulations and rules as required in the current manual of survey instructions of the United States Department of Interior, Bureau of Land Management.



AFFIX YOUR LAND SURVEYOR SEAL

COUNTY SURVEYOR FILING DATA

Date of computer entry _____

Date microfilmed _____

Number of included sheets 519
CORNER CODE