

Paper weight-110# (minimum)

Black nonfading ink required

U.S. PUBLIC LAND SURVEY MONUMENT RECORD

For Public Land Survey Corners In:

WI ADMINISTRATIVE CODE A-E 7.08 REQUIREMENT

T. 4 N. R. 11 E. 4th P.M.

REV 10/23/2004

USMONREC.DWG

CORNER CODE INDEX

PORTER TWP

ROCK COUNTY WI

IF AVAILABLE

ROCK COUNTY COORDINATES PREFERRED

1	2	3	4	5	6	7	8	9	10	11	12	13	14	15	16	17	18	19	20	21	22	23	24	25	
A																									A
B																									B
C																									C
D																									D
E																									E
F																									F
G																									G
H																									H
J																									J
K																									K
L																									L
M																									M
N																									N
O																									O
P																									P
Q																									Q
R																									R
S																									S
T																									T
U																									U
V																									V
W																									W
X																									X
Y																									Y
Z																									Z

North _____ Elev. _____

East _____

Hor. Datum _____ Vert. Datum _____

LATITUDE _____ ELLIPS. HT. _____

LONGITUDE _____

NAD83(91) _____ NETWORK ADJ. YR _____

GPS (X) _____ TRAVERSE (X) _____

BASED ON THE FOLLOWING CONTROL:

PLACE MONUMENT SYMBOL **◆** AT PROPER LOCATION ON ABOVE INDEX

◆ CORNER MONUMENT

○ WITNESS MONUMENT

BEARINGS ARE BASED ON: _____

FIELD BOOK _____ PAGE # _____

SHEET 1 OF 3

SHOW A PLAN VIEW DRAWING DEPICTING THE CORNER MONUMENT AND SURROUNDING PHYSICAL FEATURES, INCLUDING THE EXCAVATION AREA AND DEPTH.

PLANNING & ZONING COMMITTEE ADOPTED THIS FORM ON 12/2/1982

CORNER CODE 5-9

PO545

NECORSEC17

(B) Describe any record evidence, monument evidence, occupational evidence, testimonial evidence or any other material evidence you considered, and whether the monument was found or placed.

- 1833 HARRISON (NOV) T4N R11E 4TH MER. NORTH
BET. 16 & 17
1017.72 ROAD E & W TO DOUGHERTYS
2640.0 QUARTER SEC COR-SET POST & RAISED A
MOUND OF EARTH & SOD
5280.0 COR TO SECS 8,9,16,17 SET A POST AND
RAISED A MOUND OF EARTH & SOD LAND
1ST RATE ROLLING PRAIRIE GROWTH
GRASS & WEEDS
- 1833 HARRISON (NOV 3RD) T4N R11E 4TH MER. EAST ON RAND.
BET. 9 & 16
1386.00 BROOK 3.3' CRS N
2640.0 TEMPY 1/4 SEC COR.
5235.12 INT. E BDY 9.24' NORTH OF POST
LAND 1ST RATE ROLLING PRAIRIE GROWTH
GRASS & WEEDS
WEST COR. WEST BET 9 & 16
2617.56 QUARTER SEC COR. {SET A POST AND
RAISED A MOUND OF EARTH & SOD
5235.12 SEC COR.
- 1833 HARRISON (NOV) T4N R11E 4TH MER. EAST ON RAND. BET.
8 & 17
2640.0 TEMPY 1/4 SEC COR.
INT. E BDY 26.4' NORTH OF POST
LAND 1ST RATE ROLLING PRAIRIE SOIL
GOOD-GROWTH GRASS AND WEEDS
WEST COR. WEST BET. SECS 8 & 17
2656.50 QUARTER SEC. COR. {SET POST & RAISED
A MOUND OF EARTH & SOD
5313.00 SEC COR.
- 1833 HARRISON (NOV) T4N R11E 4TH MER. NORTH
BET. 8 & 9
231.00 LEAVE PRAIRIE
2640.0 QUARTER SEC COR
{BURR OAK 12 N58W 87.12'; BURR OAK
10 S62W 198.0' {BURR OAK 12; BURR
OAK 10} MARKED
5115.0 CREEK 19.8' CRS S.E.
5280.0 SET COR TO SECS 4,5,8,9
BURR OAK 12 N84E 119.46'; RED OAK 12
S56E 140.58'; BURR OAK 10 N54W 82.5'
LAND ROLLING 2ND RATE WITH HEAVY
BURR & WHITE OAK TIMBER ?? ??? GRASS
& WEEDS

1858 PORTER TWP RD REC BK 1 PG 12 BEGINNING AT A POINT ON
THE SECTION LINE BETWEEN SECTIONS 21 & 22 1438.80'
SOUTH OF THE NE COR OF SEC 21 AT THE TERMINATION OF
A ROAD CONTINUING SOUTH AND AT THE INTERSECTION OF
A ROAD RUNNING NORTH WESTERLY THROUGH SECTIONS 21
& 22, THENCE NORTH ON THE SEC LINE BETWEEN SECTIONS
21 & 22, 15 & 16, 9 & 10, 11, 998.8' TO THE NE COR OF SEC
9. ALSO BEGINNING AT THE NE COR OF THE WEST 1/2 OF
THE NW 1/4 OF SEC 15; THENCE WEST ON THE SEC LINE
BETWEEN SECTIONS 10 & 15, 9 & 16, 6,600' TO THE SW COR
OF SEC 9 AND THE LINES ABOVE DESCRIBED ARE THE
CENTER OF HIGHWAYS 66' WIDE AND WE THE SAID
SUPERVISORS DO HEREBY DISCONTINUE THE PUBLIC
HIGHWAY DISCRIBED AS FOLLOWS: BEGINNING AT THE SE
COR OF THE W 1/4 OF SEC 22 AND RUNNING NORTH ON THE
LINE OF EIGHTIES THROUGH SAID QUARTER SECTION AND

SHEET 1 OF 3

CORNER CODE J-9

Donald Baer

3/17/09

PO545 NW COR SEC 16

THROUGH SEC 15 AND A PORTION OF SEC 10, UNTIL IT INTERSECTS THE ROAD RUNNING WEST FROM VAN TATTENS BRIDGE THROUGH SEC 10,

- 1870 RUGER VOL 2 PG 25 FD LARGE HARD HEAD STONE AT CORNER, 1342.85 TO POINTED LIMESTONE 15X8X4 @ S 1/16TH COR OF SE 1/4 SEC 8, 2685.70 TO S 1/4 COR SEC 8. S 1/4 COR SEC 8 DECLARED LOST & ESTABLISHED FORM SEC CORNERS.
- 1892 BLEEDORN VOL 2 PG 465 & VOL 6 PG 320 FD LARGE HH AT COR. 2664.42 TO E 1/4 COR SEC 8.
- 1895 BROWN VOL 2 PG 496 SET HH 17X9X7 SURROUNDED BY 4 HHS 2692.47 TO N 1/4 COR SEC 17
- 1964 BATTERMAN VOL 4 PG 2 FD HARD HEAD SURROUNDED BY 4 HH. REFERENCED SAME
- 1970 COMBS CSM VOL 1 PG 289 PIPE SB9-53-05E TO 1" FD IP @ SE COR SEC 9, NORTH TO SET 1" PIPE @ W 1/4 COR SEC 9
- 1978 BARNES VOL 5 PG 497 FD PK & OLD TIES. SET ALUM MON.
- 1986 BARNES VOL 6 PG 360 NB9-26-14W 2690.08 TO S 1/4 COR SEC 8
- 1988 BARNES J-5 FD ALUM. NB9-26-14W 2690.18 FD ALUM. @ S 1/4 COR SEC 8
- 1999 COMBS CSM VOL 23 PG 60 PK 2664.57 TO PK @ W 1/4 COR SEC 16
- 1999 COMBS CSM VOL 22 PG 435 PK 2664.57 TO PK @ W 1/4 COR SEC 16
- 1999 COMBS #7496 PK S00-11-30W 2664.56 TO E 1/4 COR SEC 17
- 2000 COMBS #7642 SAME AS 1999 SURVEY #7496

FD ALUM. MON. 0.25' DEEP @ CENTER OF PVMT INTERSECTION. FD 4 REFERENCE MONUMENTS.

C) Was the corner restored through acceptance of (1) an obliterated evidence location, or, (2) a found perpetuated location?

ACCEPTED FOUND MON.

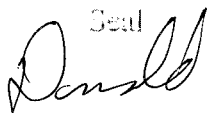
D) Describe any material discrepancy between the location of the corner as restored or reestablished and the location of that corner as previously restored or reestablished by distance and direction. Show the discrepancy on the plan view drawing under (a), above. Show the distances between the corner as previously restored or reestablished and (1) the corner as restored or reestablished, and (2) to at least 4 of the witness monuments shown on the drawing in (a), above.

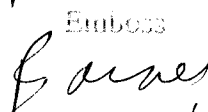
NA

(E) Was the corner reestablished through lost corner proportionate methods? If so, show the method, including the directions and distances to other public land survey corners used as evidence or used for proportioning the corner location.

NO

I, **Donald Barnes**, hereby certify that the corner location as identified by the corner code index was determined by me under my direction and control and that this U.S. Public Land Survey Monument Record is correct and complete to the best of my knowledge and belief.

Seal


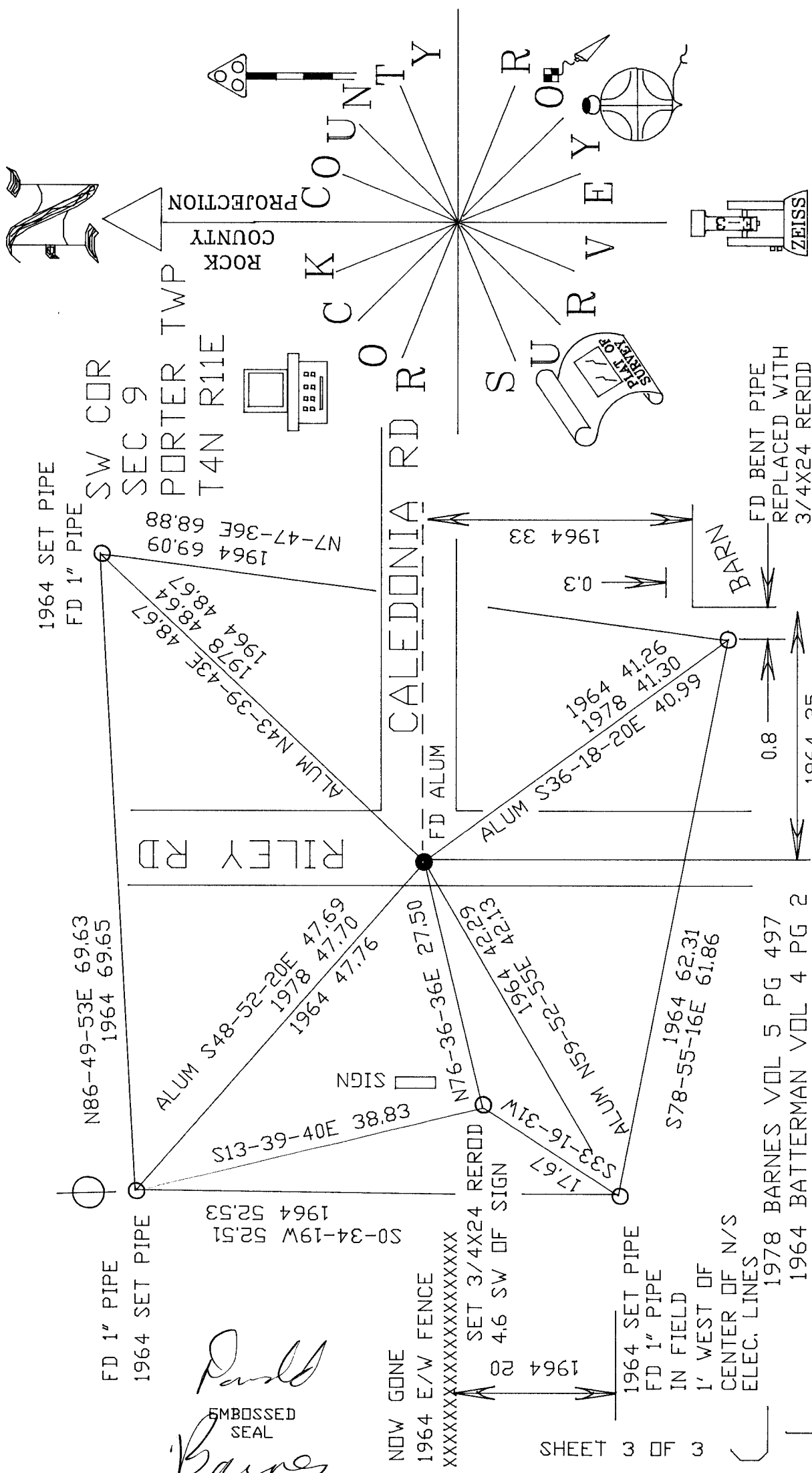
Emboss


3/17/2009

SHEET 2 OF 3

CORNER CODE **J-9**

A.E. 7.08 REQUIREMENT



1964 SET PIPE
FD 1" PIPE

SW COR
SEC 9
PORTER TWP
T4N R11E

N86-49-53E 69.63
1964 69.65

FD 1" PIPE
1964 SET PIPE

ALUM S48-52-20E 47.69
1978 47.70
1964 47.76

S0-34-19W 52.51
1964 52.53

Paul Barnes
EMBOSSSED SEAL
3/17/2009

NOW GONE
1964 E/W FENCE
XXXXXXXXXXXXXXXXXXXX

RILEY RD

CALEDONIA RD

S13-39-40E 38.83
N76-36-36E 27.50

SET 3/4X24 REROD
4.6 SW OF SIGN

1964

FD ALUM

N76-36-36E 27.50
1964 27.50

ALUM S36-18-20E 40.99
1964 41.26
1978 41.30

1964 SET PIPE
FD 1" PIPE
IN FIELD
1' WEST OF
CENTER OF N/S
ELEC. LINES

SHEET 3 OF 3

ALUM N59-52-55E 1964 42.29
1964 41.23

S78-55-16E 61.86
1964 62.31

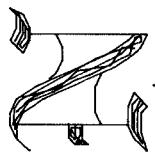
1978 BARNES VOL 5 PG 497
1964 BATTERMAN VOL 4 PG 2

0.8
1964 25

BARNES
FD BENT PIPE
REPLACED WITH
3/4X24 REROD
1964 SET PIPE

ALUM IS 0.25 DEEP; 1978 FD PK
@ CENTER OF PVMT REPLACED WITH ALUM BY 4 HH
INT.

NOT TO SCALE



ROCK COUNTY
PROJECTION

ROCK COUNTY

SURVEY

