

U.S. PUBLIC LAND SURVEY MONUMENT RECORD

For Public Land Survey Corners in:

WI ADMINISTRATIVE CODE A-E 7.08 REQUIREMENT

T. 4 N., R. 11 E

CORNER CODE INDEX

PORTER TWP

ROCK COUNTY WI

IF AVAILABLE
ROCK COUNTY COORDINATES PREFERRED

A	1	2	3	4	5	6	7	8	9	10	11	12	13	14	15	16	17	18	19	20	21	22	23	24	25
B																									
C	6					5					A			3							2			1	
D																									
E																									
F	1					8					9			10							11			12	
G																									
H																									
I																									
J																									
K	18					17					16			15							14			13	
L																									
M																									
N																									
O																									
P	19					20					21			22							23			24	
Q																									
R																									
S	30					29					28			27							26			25	
T																									
U																									
V																									
W	31					32					33			34							35			36	
X																									
Y																									
Z																									

PLACE MONUMENT SYMBOL AT PROPER LOCATION ON ABOVE INDEX

North _____ Elev. _____

East _____

Hor. Datum _____ Vert. Datum _____

LATITUDE _____ ELLIPS. HT. _____

LONGITUDE _____

GPS (X) _____ TRAVERSE (X) _____

BASED ON THE FOLLOWING CONTROL:

CORNER MONUMENT

WITNESS MONUMENT

(a)

BEARINGS ARE BASED ON:

FIELD BOOK _____ PAGE # _____

SHEET 1 OF 3

SHOW A PLAN VIEW DRAWING DEPICTING THE CORNER MONUMENT AND SURROUNDING PHYSICAL FEATURES, INCLUDING THE EXCAVATION AREA AND DEPTH.

PLANNING & ZONING COMMITTEE ADOPTED THE ABOVE FORM ON 12/2/1982

CORNER CODE C-19

PO1518

(B) Describe any record evidence, monument evidence, occupational evidence, testimonial evidence or any other material evidence you considered, and whether the monument was found or placed.

1857 PORTER TWP ROAD RECORDS. BOOK 1 PG 9. "" 27.30 CH TO E & W 1/4 LINE OF SEC 2; THENCE EAST ON SAID LINE 15.56 CH TO THE

THE CENTER OF SEC 2; THENCE EAST ON SAID LINE & ON THE E & W 1/4 LINE OF SEC 1; 120.00 CH TO THE TOWN LINE. "" THE ABOVE DESCRIBED ROAD TO BE A PUBLIC HIGHWAY 4 RODS WIDE THE LINE SURVEYED BEING THE CENTER OF THE SAME.

1858 STEBBINS. PORTER TWP ROAD RECORDS BOOK 2 PG 2. "" BEGINNING AT THE 1/4 POST ON THE EAST LINE OF SEC 2, T4R11; THENCE WEST ON THE 1/4 LINE TO THE CENTER POST ON SAID SECTION; THENCE N65W 67 CH TO A BLACK OAK """". VARIATION OF NEEDLE 8

1959 ELY MAP #3541&13534 CALLS FOR CENTER BUT STATES NOTHING ABOUT CORNER.

FOUND LARGE CARPENTER'S NAIL 0.2' DEEP AT CENTER OF PAVEMENT & ON LINE WITH N/S FENCE THAT IS SOUTH OF ROAD.

C) Was the corner restored through acceptance of (1) an obliterated evidence location, or, (2) a found perpetuated location?

NO. PERPETUATED FOUND MONUMENT. DID NOT ACCEPT NOR REJECT NAIL.

D) Describe any material discrepancy between the location of the corner as restored or reestablished and the location of that corner as previously restored or reestablished by distance and direction. Show the discrepancy on the plan view drawing under (a), above. Show the distances between the corner as previously restored or reestablished and (1) the corner as restored or reestablished, and (2) to at least 4 of the witness monuments shown on the drawing in (a), above.

(E) Was the corner reestablished through lost corner proportionate methods? If so, show the method, including the directions and distances to other public land survey corners used as evidence or used for proportioning the corner location.

I, Donald Barnes, hereby certify that the corner location as identified by the corner code index was determined by me under my direction and control and that this U.S. Public Land Survey Monument Record is correct and complete to the best of my knowledge and belief.

Seal

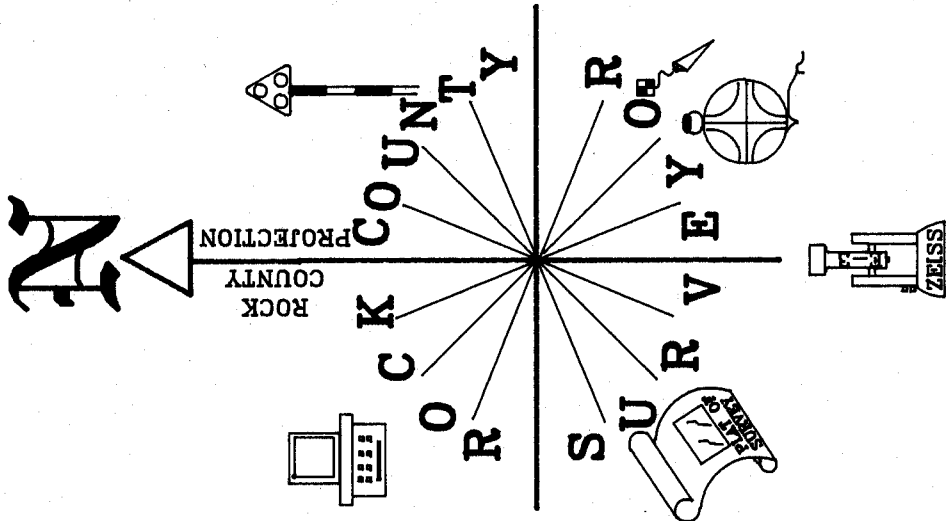
NUMBER OF INCLUDED SHEETS 1

Embloss
Donald Barnes
June 14, 01

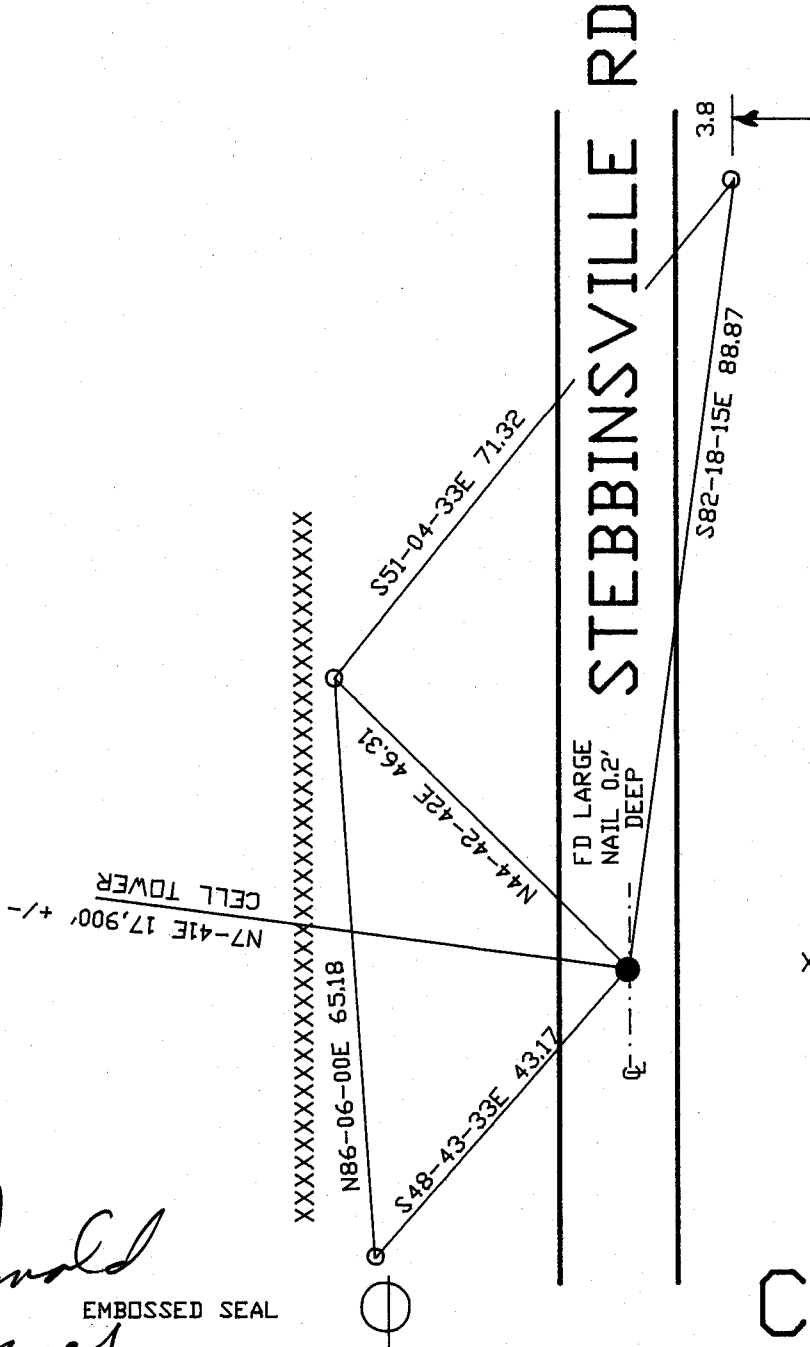
CORNER CODE

C-19

A-E 7.08 REQUIREMENT



OBSERVATION SHEET #24 & 35



XXXXXXXXXXXX

PORTER TWP
SEC 2

3/4X24 REROD
/CAP

DID NOT ACCEPT NOR REJECT
AS CENTER OF SEC 2.
PERPETUATED FOUND NAIL.

Donald Barnes
EMBOSSSED SEAL
6-14-01

C-19



CENTER?

326,134.04 N/S
456,027.94 E/W

FD LARGE NAIL,
0.2' DEEP
@ CENTER OF PVMT
& ON LINE N/S
FENCE
DID NOT ACCEPT NOR
REJECT AS CENTER OF
SEC 2

SEC
SEC 2

NO-18-19V 2617.12

**N 1/4
COR**

323516.96 N/S
456041.89 E/W N89-27-18E 2708.63 323,542.73 N/S
PRD 2709.46 458,750.40 E/W

1896 RUGER VAR 6-34 2707.32
1833 HARRISON 2669.70

NE COR

**NW
COR**

1833 HARRISON 2669.70

PRO IS THE VALUE COMPUTED
FROM THE FOLLOWING RECORD
& MEASURED DISTANCES.

RUGER	MEASURED
5436.42	5441.06
2722.50	2725.72
2722.50	2723.47
2753.52	2755.88
2578.83	2580.69
2707.32	2708.63
2628.78	2631.43
TOTAL	21,549.87
	21,566.88

FD L.S.
SET POLY. MON.
& CARSONITE

COUNTY COORDINATES

N88-23-37E 5441.06
1886 RUGER VAR 5436.42
N88-23-26E 2746.14
PRD 2746.12
1886 RUGER 2743.95

FD ALUM.

1833 HARRISON 2640
RUGER VAR 6-30 2578.83
NI-21-35W 2580.69
PRD 2580.86

320,962.77 N/S
458,811.64 E/W

**E 1/4
COR**

**W 1/4
COR**

320,810.23 N/S
453,372.71 E/W

SEC
SEC 11

CENTER

320885.64 N/S
456066.58 E/W

PORTER TWP
TAN R11E

FD TIES

1833 HARRISON 2640
RUGER VAR 5-35 2753.52
1991 BARNES NO-01-47W 2755.93
NO-09-02W 2755.88
PRD 2755.69

SW COR

USED 1991
OBSERVATIONS
(FD R/R)

1833 HARRISON 2692.80
1886 RUGER VAR 5-847 2722.50
1991 BARNES N89-33-35E 2725.70
N89-26-25E 2725.72
PRD 2724.65

**S 1/4
COR**

1833 HARRISON 2640
1886 RUGER VAR 5-847 2722.50
1991 BARNES N89-32-55E 2723.42
N89-25-39E 2723.47
PRD 2724.65

SE COR

FD PIPE
318,206.90 N/S
458,818.88 E/W

Donald Barnes
June 14, 2001