

# U.S. PUBLIC LAND SURVEY MONUMENT RECORD

For Public Land Survey Corners in:

WI ADMINISTRATIVE CODE A-E 7.08 REQUIREMENT

T. 1 N., R. 11 E 4th P.M.

CORNER CODE INDEX

NEWARK TWP

ROCK COUNTY, WI

IF AVAILABLE  
ROCK COUNTY COORDINATES PREFERRED

A	1	2	3	4	5	6	7	8	9	10	11	12	13	14	15	16	17	18	19	20	21	22	23	24	25
B	6																								
C																									
D																									
E																									
F																									
G	7	8	9	10	11	12	13	14	15	16	17	18	19	20	21	22	23	24	25	26	27	28	29	30	31
H																									
I																									
J																									
K																									
L																									
M																									
N																									
O																									
P																									
Q																									
R																									
S																									
T																									
U																									
V																									
W																									
X																									
Y																									
Z																									

North \_\_\_\_\_ Elev. \_\_\_\_\_

East \_\_\_\_\_

Hor. Datum \_\_\_\_\_ Vert. Datum \_\_\_\_\_

LATITUDE \_\_\_\_\_ ELLIPS. HT. \_\_\_\_\_

LONGITUDE \_\_\_\_\_

ELLIPS. DATUM  
NAD83(91) \_\_\_\_\_ COUNTY \_\_\_\_\_ LIST \_\_\_\_\_

GPS (X) \_\_\_\_\_ TRAVERSE (X) \_\_\_\_\_

BASED ON THE FOLLOWING CONTROL:

PLACE MONUMENT SYMBOL **◆** AT PROPER LOCATION ON ABOVE INDEX

**◆** CORNER MONUMENT

WITNESS MONUMENT

(a)

BEARINGS ARE BASED ON:

*See Back*

FIELD BOOK \_\_\_\_\_ PAGE # \_\_\_\_\_

SHEET \_\_\_\_\_ OF \_\_\_\_\_

SHOW A PLAN VIEW DRAWING DEPICTING THE CORNER MONUMENT AND SURROUNDING PHYSICAL FEATURES, INCLUDING THE EXCAVATION AREA AND DEPTH.

PLANNING & ZONING COMMITTEE ADOPTED THE ABOVE FORM ON 12/2/1982

CORNER CODE Z-23.5

B) Describe any record evidence, monument evidence, occupational evidence, testimonial evidence or any other material evidence you considered, and whether the monument was found or placed.

01/15/2003 12:26

8159625409

ALA

PAGE 03

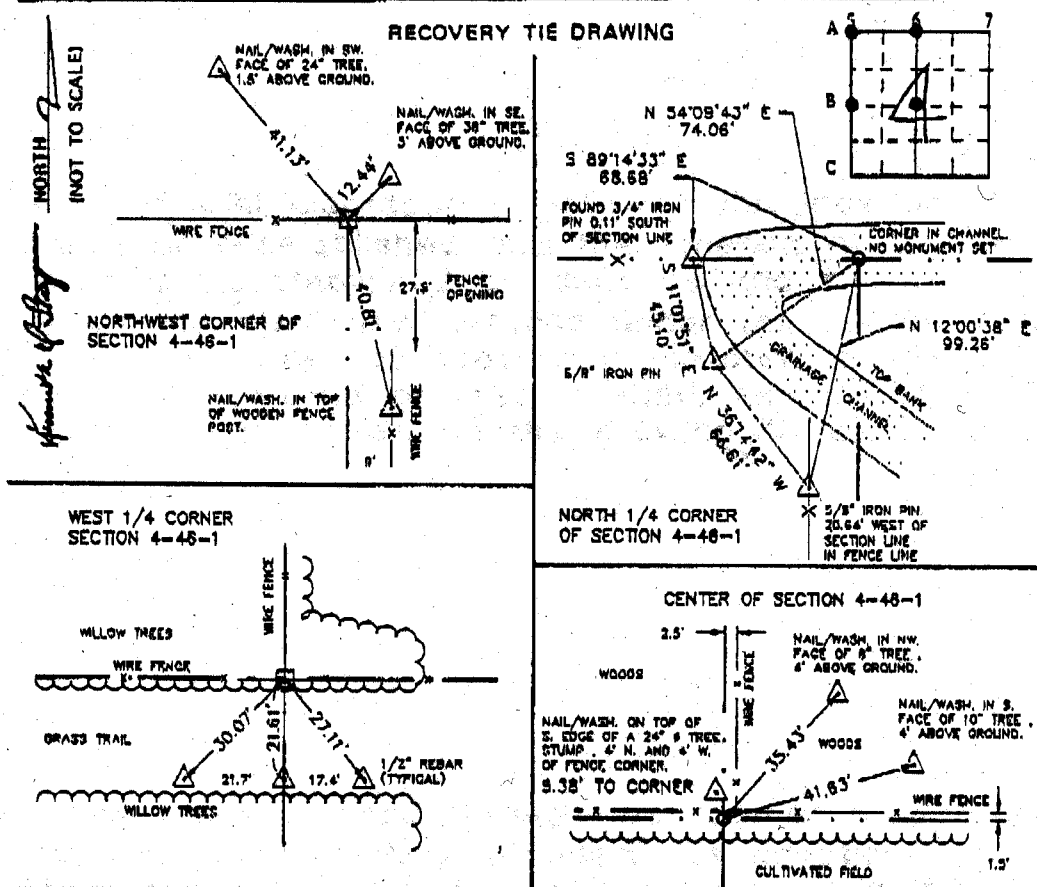
# "MONUMENT RECORD"

OF

LAND SURVEY MONUMENTS SITUATED IN SECTION 4, TOWNSHIP 46 NORTH,  
 RANGE 1 EAST, OF THE 3RD PRINCIPAL MERIDIAN, WINNEBAGO  
 COUNTY, ILLINOIS.

MONUMENT DESCRIPTION AND REMARKS: N.W. CORNER - FOUND CONCRETE MONUMENT  
N. 1/4 CORNER - NO MONUMENT SET  
W. 1/4 CORNER - FOUND CONCRETE MONUMENT  
CENTER OF SECTION - FOUND 3/4" IRON PIN

9442387 08/15/1994 11:15A 1 of 1  
 Ken Staaf, Winnebago County Recorder



STATE OF ILLINOIS SS  
 COUNTY OF WINNEBAGO

I, GORDON F. STANNARD, HEREBY  
 CERTIFY THAT THIS DOCUMENT WAS PREPARED  
 UNDER MY DIRECTION IN ACCORDANCE WITH  
 THE PUBLIC ACT 78-848 AND THE ABOVE  
 DATA IS GIVEN UNDER MY HAND AND SEAL  
 THIS 12TH DAY OF AUGUST, 1994 A.D.

*Gordon F. Stannard*  
 ILLINOIS REGISTERED LAND SURVEYOR NO. 2388

OR \_\_\_\_\_  
 UNIT \_\_\_\_\_ PROFESSIONAL GOVERNMENT AGENCY  
 LAND SURVEYOR  
 STATE OF ILLINOIS

**GORDON F. STANNARD**  
 ILLINOIS REGISTERED LAND SURVEYOR NO. 2388  
 LOUISIANA, ILLINOIS

SPACE RESERVED FOR  
 RECORDING OFFICER  
 INDEX CODE \_\_\_\_\_

A5  
 A6  
 B5  
 B6

emboss/stamped

Number of included sheets \_\_\_\_\_

A-E 7.08 REQUIREMENT CORNER CODE Z 23.5