

Paper weight-110# (minimum)

Black nonfading ink required

U.S. PUBLIC LAND SURVEY MONUMENT RECORD

For Public Land Survey Corners In:

WI ADMINISTRATIVE CODE A-E 7.08 REQUIREMENT

T. 2 N. R. 13 E. 4th P.M.

REV 10/23/2004

USMONREC.DWG

CORNER CODE INDEX

LA PRAIRIE TWP

ROCK COUNTY WI

IF AVAILABLE

ROCK COUNTY COORDINATES PREFERRED

A	1	2	3	4	5	6	7	8	9	10	11	12	13	14	15	16	17	18	19	20	21	22	23	24	25	A
B																										B
C	6						5					4				3				2				1		C
D																										D
E																										E
F																										F
G	7						8					9				10				11				12		G
H																										H
J																										J
K	18						17					16				15				14				13		K
L																										L
M																										M
N																										N
O																										O
P	19						20					21				22				23				24		P
Q																										Q
R																										R
S																										S
T	30						29					28				27				26				25		T
U																										U
V																										V
W																										W
X	31						32					33				34				35				36		X
Y																										Y
Z																										Z

North _____ Elev. _____

East _____

Hor. Datum _____ Vert. Datum _____

LATITUDE _____ ELLIPS. HT. _____

LONGITUDE _____

NAD83(91) _____ NETWORK ADJ. YR _____

GPS (X) _____ TRAVERSE (X) _____

BASED ON THE FOLLOWING CONTROL:

PLACE MONUMENT SYMBOL AT PROPER LOCATION ON ABOVE INDEX

CORNER MONUMENT

WITNESS MONUMENT

(a)

BEARINGS ARE BASED ON:

FIELD BOOK _____ PAGE # _____

SHEET 1 OF 4

SHOW A PLAN VIEW DRAWING DEPICTING THE CORNER MONUMENT AND SURROUNDING PHYSICAL FEATURES, INCLUDING THE EXCAVATION AREA AND DEPTH.

PLANNING & ZONING COMMITTEE ADOPTED THIS FORM ON 12/2/1982

CORNER CODE R-9(z)

LA585

(B) Describe any record evidence, monument evidence, occupational evidence, testimonial evidence or any other material evidence you considered, and whether the monument was found or placed.

1833 HARRISON DEC 26TH NORTH BETWEEN 28 & 29

2640 QUARTER SEC COR IN PRAIRIE DESCENDING NE. SET POST & RAISED MOUND

5280 SET COR TO SECS 20, 21, 28, & 29 ON GROUND DESCENDING S.E. SET POST & RAISED MOUND. LAND HIGH ROLLING PRAIRIE 1ST RATE- GROWTH WILD RYE & INDIGO AND PRAIRIE GRASS.

EAST ON RAND. BET. 21 & 28

1056 BROOK 3.3' CRS N.E.

1386 THICKET

1782 LEFT THICKET & REENTER PRAIRIE

2640 TEMPY 1/4 P.

5267.46 INT. E BDY. AT POST LAND HIGH ROLLING PRAIRIE 1ST RATE

WEST COR.

2633.73 QUARTER SEC COR ON GROUND DESCENDING NE. SET POST & RAISED MOUND

5267.46 SEC COR.

NORTH BETWEEN SECS 20 & 21

1716 LEFT PRAIRIE & ENTER TIMBER

2265.78 RED O. 12

2640 QUARTER SEC COR. {BURR O 24 N49E 26.4' BURR O 6 N78W 9.24'} BURR O 24 BURR O 6} MARKED

3333 LEFT TIMBER & ENTER MARSH

5280 COR TO SECS 16, 17, 20, & 21 IN MARSH {BURR O 24 S79W 248.82' BURR O 10 N62W 271.26' LAND 1ST 1/4 ROLLING 1ST RATE PRAIRIE REMAINDER ROLLING 2ND RATE WITH BURR & W.O. TIMBER.

EAST ON RAND. BET. 20 & 29

2640 QUARTER SEC COR. (TEMPY)

5301.12 INT. E BDY AT POST

LAND HIGH ROLLING 1ST RATE PRAIRIE GROWTH GRASS & WEEDS.

COR WEST

2650.56 SET QUARTER SEC COR POST & RAISED MOUND

5301.12 INT. W BDY.

1870 RUGER JULY 28TH EAST ON NORTH LINE NW 1/4 OF SEC 29 ON A VAR 6-08 COULD FIND NO TRACE OF NORTH 1/4 COR AT

2655.92' ESTABLISHED 1/4 COR ACCORDING TO LAW FROM NEAREST KNOWN CORNERS OF US SURVEY.

EAST ON NORTH LINE NE 1/4 OF SEC 29 ON A VAR 6-08

2655.92' INTERSECTED EAST BOUNDARY LINE AND ESTABLISHED NE SECTION COR. ACCORDING TO LAW FROM NEAREST KNOWN CORNERS OF US SURVEY.

1870 RUGER JULY 29TH EAST ON NORTH LINE NW 1/4 OF SEC 28 ON A VAR 5-29

2655.92' INTERSECTED 1/4 LINE & ESTABLISHED 1/4 COR ACCORDING TO LAW FROM NEAREST KNOWN CORNERS OF US SURVEY.

SHEET 4 OF 4

CORNER CODE R-9(2)

Arnold Barnes
0822 2006

LA585

EAST ON NORTH LINE NE ¼ OF SEC 28
ON A VAR 5-27 AT (AUG 7)

2655.92' INTERSECTED EAST BOUNDARY LINE AT COR. FOUND
OLD STAKE AT COR.

NORTH ON EAST LINE OF SE ¼ OF SEC 29
ON A VAR 6-23 AT

2646.60 INTERSECTED ¼ LIN 3.3' EAST OF ¼ COR FOUND
OLD STAKE AT COR. COR VAR 6-27'

NORTH ON EAST LINE OF NE ¼ OF SEC 20
ON A VAR 7-50' AT

2640 INTERSECTED NORTH BOUNDARY LINE 6.6' WEST OF
COR COR VAR 7-41

NORTH ON EAST LINE OF SE ¼ OF SEC 17
ON A VAR 9-10' AT

2641.98 INTERSECTED ¼ LINE 0.66' WEST OF ¼ COR
FOUND LIMESTONE AT COR COR VAR 9-09

1939 SUNNY VOL 3 PG 450 FD 6X6 STONE MON. SET 1 1/2 X 18"
CAPPED PIPE ON TOP.

1960 BATTERMAN VOL 4 PG 41 FD 1 ½ CAPPED PIPE. REFERENCED
SAME.

1985 BARNES R-9 FB #2 PG 21, 23, & 68 FD CAPPED PIPE,
CUT LIMESTONE 2' DEEP, & REFERENCE PIPES. PLACED POLY
ON TOP. REFERENCED SAME.

1990 BARNES R-9(1) FB#3 PG 58 FD POLY WITH CAP BROKE OFF.
REFERENCED SAME. SURFACE PAVING PROJECT.

AFTER REPAVING I FOUND A PK. I SET A DURA-NAIL IN THE PVMT
SURFACE.

POLY & LS ARE STILL BELOW THE PVMT.

C) Was the corner restored through acceptance of (1) an obliterated evidence location, or, (2) a found
perpetuated location?

THE DURA-NAIL IS IN HARMONY WITH THE FD REFERENCE PIPES.

D) Describe any material discrepancy between the location of the corner as restored or reestablished
and the location of that corner as previously restored or reestablished by distance and direction. Show
the discrepancy on the plan view drawing under (a), above. Show the distances between the corner as
previously restored or reestablished and (1) the corner as restored or reestablished, and (2) to at least 4
of the witness monuments shown on the drawing in (a), above.

YES.

(E) Was the corner reestablished through lost corner proportionate methods? If so, show the method,
including the directions and distances to other public land survey corners used as evidence or used for
proportioning the corner location.

NO

I, **Donald Barnes**, hereby certify that the corner location as identified by the corner code index
was determined by me under my direction and control and that this U.S. Public Land Survey
Monument Record is correct and complete to the best of my knowledge and belief.

Seal
Donald Barnes

Emboss

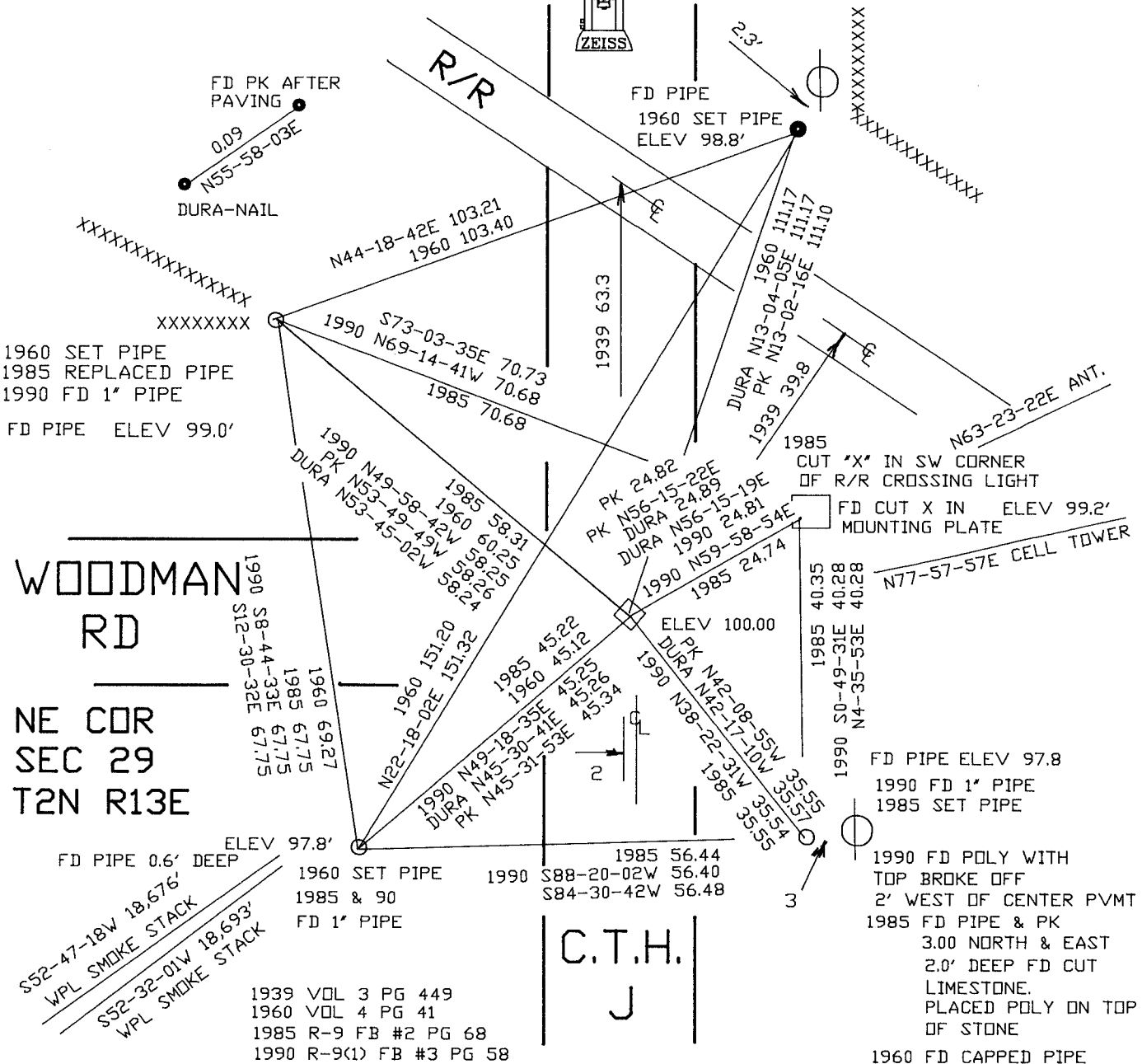
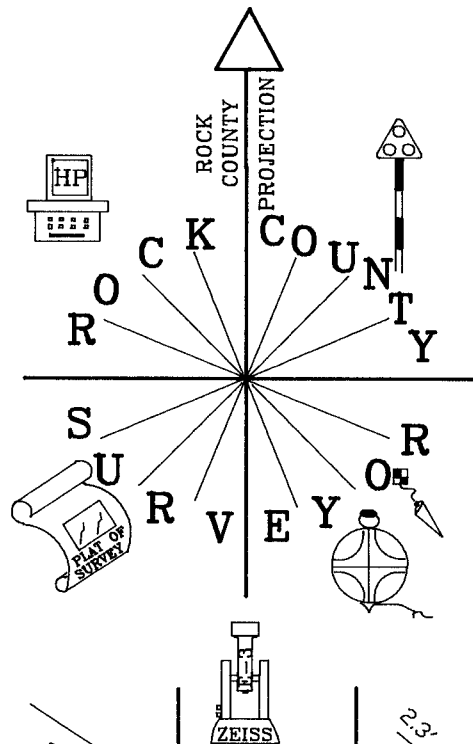
OCT 2 2006

SHEET 2 OF 4

CORNER CODE

R-9(2)

A.E. 7.08 REQUIREMENT



PVMT GROUND IN JULY 2006
& REPAVED IN SEP 2006

OBSERVATION SHEET 585 & 1585

EMBOSSSED SEAL
Land Bureau
OCT 2 2006

R-9(2) SHEET 3 OF 4

ASSUMED ELEVATION

1990 FD POLY WITH TOP BROKE OFF 2' WEST OF CENTER PVMT
1985 FD PIPE & PK 3.00 NORTH & EAST 2.0' DEEP FD CUT LIMESTONE, PLACED POLY ON TOP OF STONE
1960 FD CAPPED PIPE
1939 FD 6X6 STONE SET 1 1/2X18" CAPPED PIPE ON TOP

FD CUT X IN ELEV 99.2' MOUNTING PLATE

CUT "X" IN SW CORNER OF R/R CROSSING LIGHT

WOODMAN RD
NE COR
SEC 29
T2N R13E

FD PK AFTER PAVING
0.09
N55-58-03E
DURA-NAIL

FD PIPE
1960 SET PIPE
ELEV 98.8'

1960 SET PIPE
1985 REPLACED PIPE
1990 FD 1" PIPE
FD PIPE ELEV 99.0'

1985 40.35
1990 S0-49-31E 40.28
N4-35-53E 40.28

FD PIPE ELEV 97.8
1990 FD 1" PIPE
1985 SET PIPE

FD PIPE 0.6' DEEP
S52-47-18W 18.676'
WPL SMOKE STACK
S52-32-01W 18.693'
WPL SMOKE STACK

1939 VOL 3 PG 449
1960 VOL 4 PG 41
1985 R-9 FB #2 PG 68
1990 R-9(1) FB #3 PG 58

ELEV 97.8'
FD PIPE 0.6' DEEP
1960 SET PIPE
1985 & 90
FD 1" PIPE
1985 56.44
1990 S88-20-02W 56.40
S84-30-42W 56.48

C.T.H.
J

N77-57-57E CELL TOWER

N44-18-42E 103.21
1960 103.40

S73-03-35E 70.73
1990 N69-14-41W 70.68
1985 70.68

1990 N49-58-42W 58.31
DURA N53-45-49W 58.24
N53-45-02W 58.24

1985 58.31
1960 60.21
1985 58.24
1960 61.21
1985 45.22
1960 45.12
1985 45.26
1960 45.34

1960 151.20
N22-18-02E 151.32
1985 45.22
1960 45.12
1985 45.26
1960 45.34

1990 N49-18-35E 45.25
DURA N45-30-41E 45.26
N43-31-53E 45.34
1990 N42-08-55W 35.55
N42-17-10W 35.54
1985 N38-22-31W 35.55

ELEV 100.00

1990 N42-08-55W 35.55
N42-17-10W 35.54
1985 N38-22-31W 35.55

1985 40.35
1990 S0-49-31E 40.28
N4-35-53E 40.28

1990 FD POLY WITH TOP BROKE OFF 2' WEST OF CENTER PVMT
1985 FD PIPE & PK 3.00 NORTH & EAST 2.0' DEEP FD CUT LIMESTONE, PLACED POLY ON TOP OF STONE

1960 FD CAPPED PIPE
1939 FD 6X6 STONE SET 1 1/2X18" CAPPED PIPE ON TOP

U.S. PUBLIC LAND SURVEY MONUMENT RECORD

For Public Land Survey Corners In:
T. 2 N. R. 13 E. 4th P.M.
CORNER CODE INDEX

WI ADMINISTRATIVE CODE A-E 7.08 REQUIREMENT
REV 10/23/2004 USMONREC.DWG

	1	2	3	4	5	6	7	8	9	10	11	12	13	14	15	16	17	18	19	20	21	22	23	24	25	
A																										A
B																										B
C																										C
D																										D
E																										E
F																										F
G																										G
H																										H
J																										J
K																										K
L																										L
M																										M
N																										N
O																										O
P																										P
Q																										Q
R																										R
S																										S
T																										T
U																										U
V																										V
W																										W
X																										X
Y																										Y
Z																										Z

LA PRAIRIE TWP
ROCK COUNTY WI

IF AVAILABLE
ROCK COUNTY COORDINATES PREFERRED

North _____ Elev. _____

East _____

Hor. Datum _____ Vert. Datum _____

LATITUDE _____ ELLIPS. HT. _____

LONGITUDE _____

NAD83(91) _____ NETWORK ADJ. YR _____

GPS (X) _____ TRAVERSE (X) _____

BASED ON THE FOLLOWING CONTROL:

1 2 3 4 5 6 7 8 9 10 11 12 13 14 15 16 17 18 19 20 21 22 23 24 25
PLACE MONUMENT SYMBOL AT PROPER LOCATION ON ABOVE INDEX

CORNER MONUMENT

WITNESS MONUMENT

BEARINGS ARE BASED ON:

IN JULY 2006 CTH "J"s ASPHALT SURFACE WAS REMOVED BY A GRINDING PROCESS. IN SEPTEMBER 2006 IT WAS RESURFACED WITH ASPHALT. FROM THE TIES I PLACED EITHER A 3" STEEL SURVEY MARKER SPIKE OR A 3" DURANAIL FROM THE TIES. THE MONUMENTS OF RECORD ARE STILL BELOW THE PAVMENT.

FIELD BOOK _____ PAGE # _____

SHEET 4 OF 34

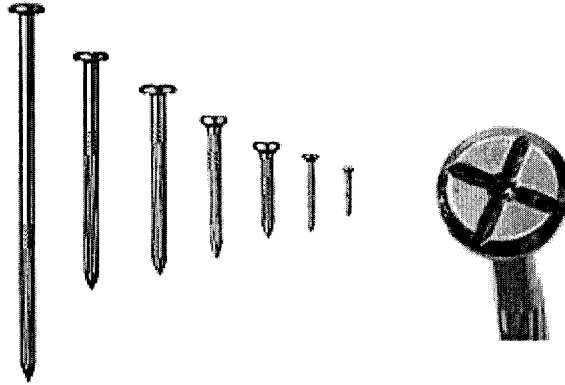
SHOW A PLAN VIEW DRAWING DEPICTING THE CORNER MONUMENT AND SURROUNDING PHYSICAL FEATURES, INCLUDING THE EXCAVATION AREA AND DEPTH.

PLANNING & ZONING COMMITTEE ADOPTED THIS FORM ON 12/2/1982

CORNER CODE R-9(2)

DuraNail

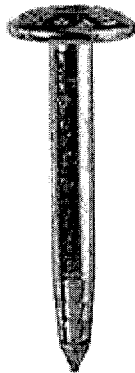
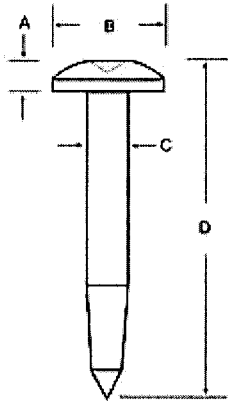
Exclusively From Berntsen



DuraNail

This steel nail will not bend or break and will drive into the asphalt with ease. Not like other nails, it has a deep cross on its larger head along with a center punch. This magnetic nail comes in a variety of lengths. You will receive The Magnetizer with each bag of nails, which will realign the magnetic field after installation to make your DuraNail more detectable

Steel Nail Markers



A = 3/16" (5 mm)
B = 1" (25 mm)
C = 11/32" (9 mm)
D = 3" (76 mm)

The Steel Nail Marker is super strong solid steel and drives easily into blacktop. "SURVEY MARK" is imprinted on top of nail for easy identification as a survey mark. The SNM1 has a 1" (25mm) convex top and conical recessed center chamfer for pinpoint accuracy.

Don Barnes
OCT 2, 2006

40F
R-9(2)