

U.S. PUBLIC LAND SURVEY MONUMENT RECORD

For Public Land Survey Corners In:

WI ADMINISTRATIVE CODE A-E 7.08 REQUIREMENT

T. 2N. R. 13E. 4th P.M.

REV 10/23/2004

USMONREC.DWG

CORNER CODE INDEX

LA PRAIRIE TWP

ROCK COUNTY WI

IF AVAILABLE

ROCK COUNTY COORDINATES PREFERRED

A	1	2	3	4	5	6	7	8	9	10	11	12	13	14	15	16	17	18	19	20	21	22	23	24	25	A
B		6																								B
C			5																							C
D				4																						D
E					3																					E
F						2																				F
G							1																			G
H																										H
J																										J
K																										K
L																										L
M																										M
N																										N
O																										O
P																										P
Q																										Q
R																										R
S																										S
T																										T
U																										U
V																										V
W																										W
X																										X
Y																										Y
Z																										Z

North _____ Elev. _____

East _____

Hor. Datum _____ Vert. Datum _____

LATITUDE _____ ELLIPS. HT. _____

LONGITUDE _____

NAD83(91) _____ NETWORK ADJ. YR _____

GPS (X) _____ TRAVERSE (X) _____

BASED ON THE FOLLOWING CONTROL:

PLACE MONUMENT SYMBOL AT PROPER LOCATION ON ABOVE INDEX

CORNER MONUMENT

WITNESS MONUMENT

(a)

BEARINGS ARE BASED ON: _____

FIELD BOOK _____ PAGE # _____

SHEET 1 OF 3

SHOW A PLAN VIEW DRAWING DEPICTING THE CORNER MONUMENT AND SURROUNDING PHYSICAL FEATURES, INCLUDING THE EXCAVATION AREA AND DEPTH.

PLANNING & ZONING COMMITTEE ADOPTED THIS FORM ON 12/2/1982

CORNER CODE P-9(2)

LA576

(B) Describe any record evidence, monument evidence, occupational evidence, testimonial evidence or any other material evidence you considered, and whether the monument was found or placed.

1939 SUNNY VOL 3 PG 449 DUG A 9X9 2' DEEP HOLE INTO CLAY & FD NOTHING. CORNER IS SAID TO HAVE BEEN DESTROYED BY GRADING YEARS AGO. NOTE: CHAINED 2645.0 FROM HOLE TO NW COR SEC 21.

1960 BATTERMAN VOL 4 PG 40 SET A R/R AT COR & REFERENCED SAME. DOES NOT STATE METHOD IN ESTABLISHING POSITION.

1985 BARNES P-9 FB #2 PG 21,23, & 65 FD R/R SPIKE 0.3' DEEP. FD BATTERMAN'S REFERENCE PIPES. PLACED POLY.

1990 BARNES P-9(1) FB#3 PG 58 FD POLY 1 1/2' EAST OF CENTER OF PVMT. REFERENCED SAME. CTH "J" WILL BE REPAVED.

PAVEMENT WAS GROUND IN JULY 2006 AND REPAVED IN SEPTEMBER 2006. PRIOR TO GRINDING I FOUND A PK AND REFERENCED SAME. AFTER REPAVING I SET A DURA-NAIL IN THE PVMT SURFACE.

POLY IS STILL BELOW THE PVMT.

C) Was the corner restored through acceptance of (1) an obliterated evidence location, or, (2) a found perpetuated location?

THE DURA-NAIL IS IN HARMONY WITH THE FD REFERENCE PIPES.

D) Describe any material discrepancy between the location of the corner as restored or reestablished and the location of that corner as previously restored or reestablished by distance and direction. Show the discrepancy on the plan view drawing under (a), above. Show the distances between the corner as previously restored or reestablished and (1) the corner as restored or reestablished, and (2) to at least 4 of the witness monuments shown on the drawing in (a), above.

YES.

(E) Was the corner reestablished through lost corner proportionate methods? If so, show the method, including the directions and distances to other public land survey corners used as evidence or used for proportioning the corner location.

NO

I, **Donald Barnes**, hereby certify that the corner location as identified by the corner code index was determined by me under my direction and control and that this U.S. Public Land Survey Monument Record is correct and complete to the best of my knowledge and belief.

Seal

SHEET 1 OF 3

Emboss
Donald Barnes

Oct 2 2006

CORNER CODE

A.E. 7.08 REQUIREMENT

P-9(2)

U.S. PUBLIC LAND SURVEY MONUMENT RECORD

For Public Land Survey Corners In:
T. 2 N. R. 13 E. 4th P.M.
CORNER CODE INDEX

WI ADMINISTRATIVE CODE A-E 7.08 REQUIREMENT
REV 10/23/2004 USMONREC.DWG

LA PRAIRIE TWP
ROCK COUNTY WI

IF AVAILABLE
ROCK COUNTY COORDINATES PREFERRED

	1	2	3	4	5	6	7	8	9	10	11	12	13	14	15	16	17	18	19	20	21	22	23	24	25		
A																											A
B																											B
C																											C
D																											D
E																											E
F																											F
G																											G
H																											H
J																											J
K																											K
L																											L
M																											M
N																											N
O																											O
P																											P
Q																											Q
R																											R
S																											S
T																											T
U																											U
V																											V
W																											W
X																											X
Y																											Y
Z																											Z
	1	2	3	4	5	6	7	8	9	10	11	12	13	14	15	16	17	18	19	20	21	22	23	24	25		

PLACE MONUMENT SYMBOL AT PROPER LOCATION ON ABOVE INDEX

North _____ Elev. _____

East _____

Hor. Datum _____ Vert. Datum _____

LATITUDE _____ ELLIPS. HT. _____

LONGITUDE _____

NAD83(91) _____ NETWORK ADJ. YR _____

GPS (X) _____ TRAVERSE (X) _____

BASED ON THE FOLLOWING CONTROL:

CORNER MONUMENT

WITNESS MONUMENT

BEARINGS ARE BASED ON:

IN JULY 2006 CTH "J"s ASPHALT SURFACE WAS REMOVED BY A GRINDING PROCESS. IN SEPTEMBER 2006 IT WAS RESURFACED WITH ASPHALT. FROM THE TIES I PLACED EITHER A 3" STEEL SURVEY MARKER SPIKE OR A 3" DURANAIL FROM THE TIES. THE MONUMENTS OF RECORD ARE STILL BELOW THE PAVMENT.

FIELD BOOK _____ PAGE # _____

SHEET 2 OF 3

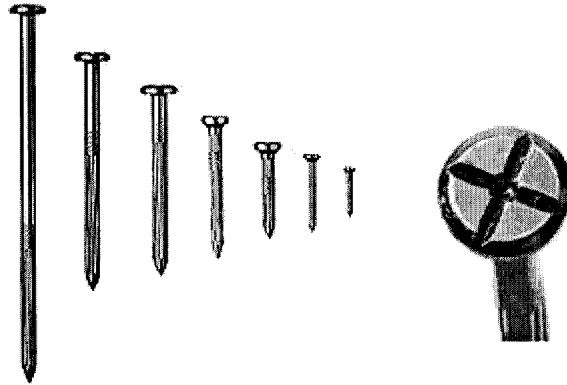
SHOW A PLAN VIEW DRAWING DEPICTING THE CORNER MONUMENT AND SURROUNDING PHYSICAL FEATURES, INCLUDING THE EXCAVATION AREA AND DEPTH.

PLANNING & ZONING COMMITTEE ADOPTED THIS FORM ON 12/2/1982

CORNER CODE P-9(2)

DuraNail

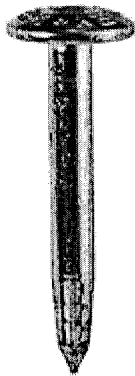
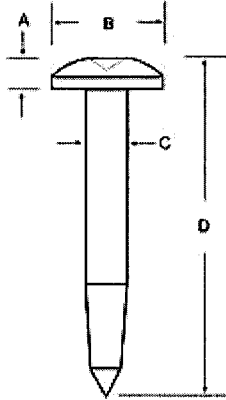
Exclusively From Berntsen



DuraNail

This steel nail will not bend or break and will drive into the asphalt with ease. Not like other nails, it has a deep cross on its larger head along with a center punch. This magnetic nail comes in a variety of lengths. You will receive The Magnetizer with each bag of nails, which will realign the magnetic field after installation to make your DuraNail more detectable

Steel Nail Markers



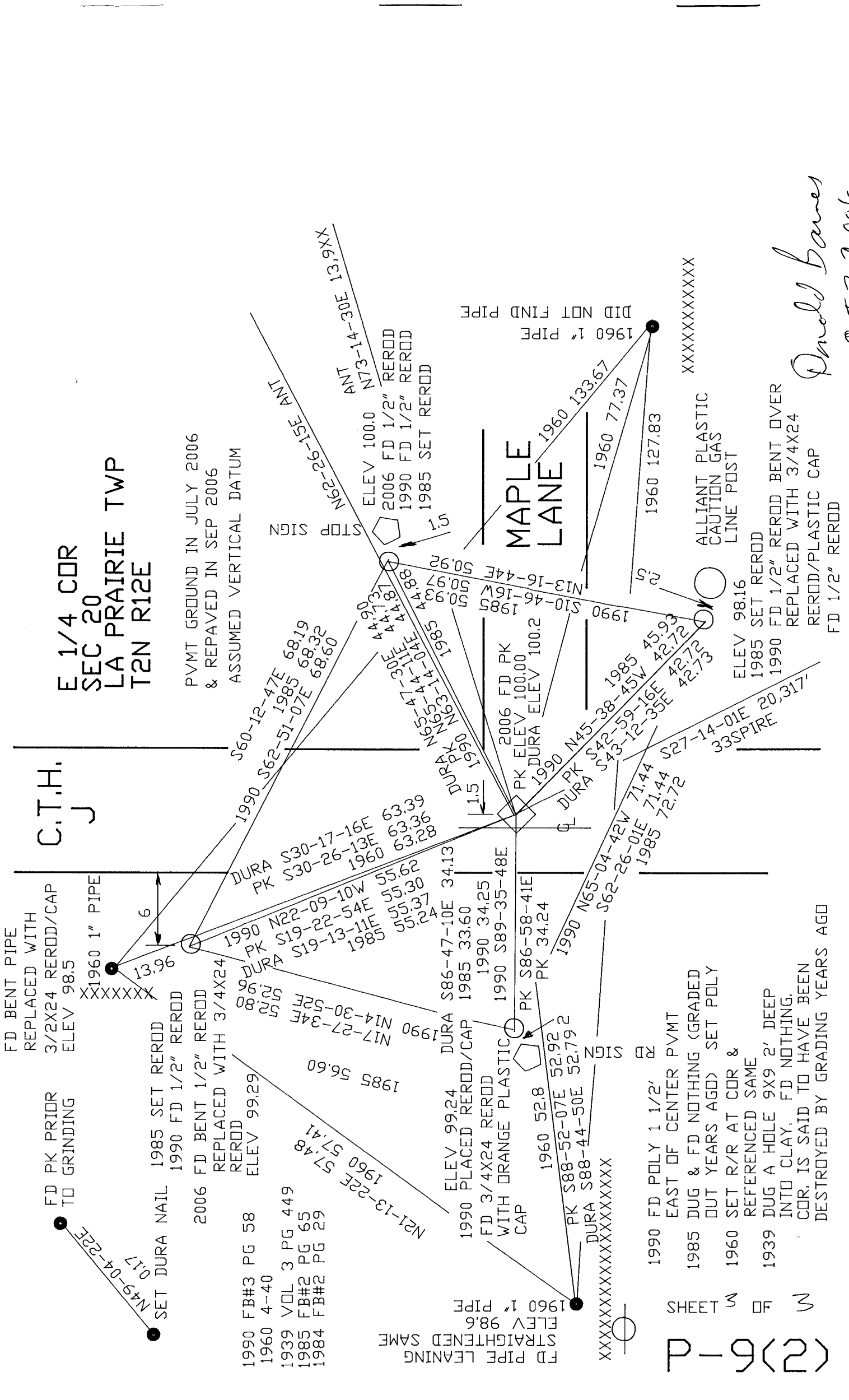
A = 3/16" (5 mm)
B = 1" (25 mm)
C = 11/32" (9 mm)
D = 3" (76 mm)

The Steel Nail Marker is super strong solid steel and drives easily into blacktop. "SURVEY MARK" is imprinted on top of nail for easy identification as a survey mark. The SNM1 has a 1" (25mm) convex top and conical recessed center chamfer for pinpoint accuracy.

Donald Barnes
OCT 2, 2006

2 OF 3

P-9(12)



E 1/4 COR
SEC 20
LA PRAIRIE TWP
T2N R12E

PVMT GROUND IN JULY 2006
& REPAVED IN SEP 2006
ASSUMED VERTICAL DATUM

C.T.H.
J

MAPLE
LANE

David Barnes
OCT 2 2006

FD BENT PIPE
REPLACED WITH
3/2X24 REROD/CAP
ELEV 98.5

XXXXXX
1960 1" PIPE

SET DURA NAIL
1985 SET REROD
1990 FD 1/2" REROD
2006 FD BENT 1/2" REROD
REPLACED WITH 3/4X24
REROD
ELEV 99.29

1990 FB#3 PG 58
1960 4-40
1939 VOL 3 PG 449
1985 FB#2 PG 65
1984 FB#2 PG 29

FD PIPE LEANING
STRAIGHTENED SAME
ELEV 98.6
1960 1" PIPE

ELEV 99.24
1990 PLACED REROD/CAP
FD 3/4X24 REROD
WITH ORANGE PLASTIC
CAP
ELEV 52.8
1960 52.8
PK S88-52-07E 52.92
DURA S88-44-50E 52.79 2

1990 S86-47-10E 34.13
DURA S86-58-41E
PK S86-58-41E
PK 34.24
1990 S89-35-48E
PK S89-35-48E
1990 S89-35-48E
PK 34.25

1990 FD POLY 1 1/2'
EAST OF CENTER PVMT
1985 DUG & FD NOTHING (GRADED
OUT YEARS AGO) SET POLY
1960 SET R/R AT COR &
REFERENCED SAME
1939 DUG A HOLE 9X9 2' DEEP
INTO CLAY. FD NOTHING.
COR. IS SAID TO HAVE BEEN
DESTROYED BY GRADING YEARS AGO

1990 S30-17-16E 63.39
DURA S30-26-13E 63.36
PK S30-26-13E 63.28
1960 63.28

1990 N22-09-10W 55.62
PK S19-22-54E 55.30
DURA S19-13-11E 55.37
1985 55.24

1990 N14-30-52E 55.80
DURA N14-30-52E 55.80
PK 55.80
1990 N17-27-34E 55.80
DURA N17-27-34E 55.80
PK 55.80

1990 N65-04-42W 71.44
DURA S62-26-01E 71.44
PK S62-26-01E 71.44
1985 72.72

1990 S42-59-45W 45.93
DURA S43-12-35E 42.72
PK S43-12-35E 42.72
1985 42.72

STOP SIGN
ELEV 100.0
2006 FD 1/2" REROD
1990 FD 1/2" REROD
1985 SET REROD

1990 S10-46-16W 50.93
DURA S10-46-16W 50.93
PK 50.93
1985 50.93

1990 S13-16-44E 50.92
DURA S13-16-44E 50.92
PK 50.92
1985 50.92

1960 127.83
1960 77.37
1960 133.67

ELEV 98.16
1985 SET REROD
1990 FD 1/2" REROD BENT OVER
REPLACED WITH 3/4X24
REROD/PLASTIC CAP
FD 1/2" REROD

XXXXXXXXXXXX

ALLIANT PLASTIC
CAUTION GAS
LINE POST

1960 1" PIPE
DID NOT FIND PIPE

SHEETS

261P