

U.S. PUBLIC LAND SURVEY MONUMENT RECORD

For Public Land Survey Corners In:
T. 2 N. R. 13 E. 4th P.M.

WI ADMINISTRATIVE CODE A-E 7.08 REQUIREMENT
REV 10/23/2004 USMONREC.DWG

CORNER CODE INDEX

	1	2	3	4	5	6	7	8	9	10	11	12	13	14	15	16	17	18	19	20	21	22	23	24	25
A																									
B																									
C	6																								
D																									
E																									
F																									
G	7																								
H																									
J																									
K	18																								
L																									
M																									
N																									
O																									
P	19																								
Q																									
R																									
S																									
T	30																								
U																									
V																									
W																									
X	31																								
Y																									
Z																									
	1	2	3	4	5	6	7	8	9	10	11	12	13	14	15	16	17	18	19	20	21	22	23	24	25

LA PRAIRIE TWP
ROCK COUNTY WI

IF AVAILABLE
ROCK COUNTY COORDINATES PREFERRED

North _____ Elev. _____

East _____

Hor. Datum _____ Vert. Datum _____

LATITUDE _____ ELLIPS. HT. _____

LONGITUDE _____

NAD83(91) _____ NETWORK ADJ. YR _____

GPS (X) _____ TRAVERSE (X) _____

BASED ON THE FOLLOWING CONTROL:

PLACE MONUMENT SYMBOL AT PROPER LOCATION ON ABOVE INDEX

CORNER MONUMENT

WITNESS MONUMENT

(a)

BEARINGS ARE BASED ON: _____

FIELD BOOK _____ PAGE # _____

SHEET 1 OF 3

SHOW A PLAN VIEW DRAWING DEPICTING THE CORNER MONUMENT AND SURROUNDING PHYSICAL FEATURES, INCLUDING THE EXCAVATION AREA AND DEPTH.

PLANNING & ZONING COMMITTEE ADOPTED THIS FORM ON 12/2/1982

CORNER CODE N-9(2)

LA565

(B) Describe any record evidence, monument evidence, occupational evidence, testimonial evidence or any other material evidence you considered, and whether the monument was found or placed.

1939 SUNNY VOL 3 PG 449 FD 6X6 STONE MON. SET 1 1/2X6
CAPPED PIPE ON TOP. REFERENCED TO TREES. NOTE:
CHAINED 2645.0 TO HOLE AT E 1/4 COR SEC 20.

1960 BATTERMAN VOL 4 PG 40 REFERENCED CORNER & NOTE: SEE
PG 455.

1970 BATTERMAN VOL 4 PG 455 FD 1 1/2 CAPPED PIPE BY SUNNY
SET CONC. MON. & REFERENCED.

1985 BARNES N-9 & FB #2 PG 20, & 64 FD MON. BOX WITH
CONCRETE MON WITH BRASS DISK WITH CUT X 0.5' DEEP.
PLACED ALUM ON TOP OF DISK. REFERENCED SAME.

1990 BARNES N-9(1) & FB#3 PG 57 FD ALUM. 1' EAST OF CENTER
OF PVMT & REFERENCED SAME. GTH "J" WILL BE REPAVED IN
1990.

PAVEMENT WAS GROUND IN JULY 2006 AND REPAVED IN
SEPTEMBER 2006. AFTER REPAVING I SET A STEEL SURVEY NAIL
MARKER IN THE PVMT SURFACE.

MONUMENT BOX, CONCRETE MON/DISK, & ALUM. MON. ARE STILL
BELOW THE PVMT SURFACE.

C) Was the corner restored through acceptance of (1) an obliterated evidence location, or, (2) a found perpetuated location?

SET STEEL SURVEY NAIL MARKER. IT IS IN HARMONY WITH THE FD
REFERENCE PIPES.

D) Describe any material discrepancy between the location of the corner as restored or reestablished and the location of that corner as previously restored or reestablished by distance and direction. Show the discrepancy on the plan view drawing under (a), above. Show the distances between the corner as previously restored or reestablished and (1) the corner as restored or reestablished, and (2) to at least 4 of the witness monuments shown on the drawing in (a), above.

NO

(E) Was the corner reestablished through lost corner proportionate methods? If so, show the method, including the directions and distances to other public land survey corners used as evidence or used for proportioning the corner location.

NO

I, **Donald Barnes**, hereby certify that the corner location as identified by the corner code index was determined by me under my direction and control and that this U.S. Public Land Survey Monument Record is correct and complete to the best of my knowledge and belief.

Seal

OCT 2 2006

Emboss

SHEET 1 OF 3

Donald Barnes

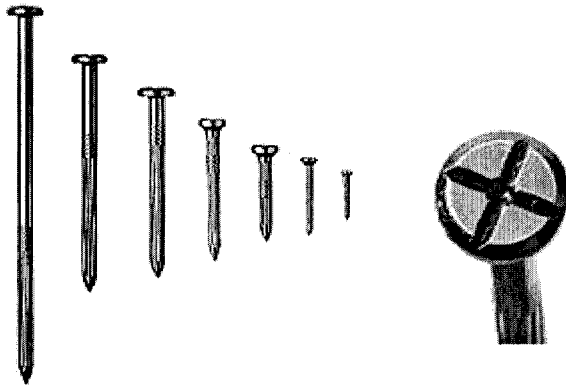
CORNER CODE

N-9(2)

A.E. 7.08 REQUIREMENT

DuraNail

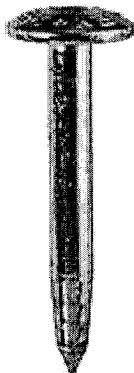
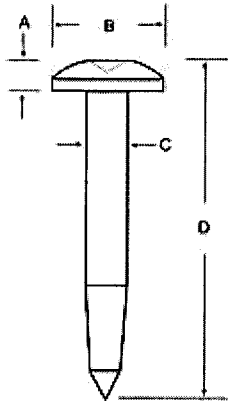
Exclusively From Berntsen



DuraNail

This steel nail will not bend or break and will drive into the asphalt with ease. Not like other nails, it has a deep cross on its larger head along with a center punch. This magnetic nail comes in a variety of lengths. You will receive The Magnetizer with each bag of nails, which will realign the magnetic field after installation to make your DuraNail more detectable

Steel Nail Markers



A = 3/16" (5 mm)
B = 1" (25 mm)
C = 11/32" (9 mm)
D = 3" (76 mm)

The Steel Nail Marker is super strong solid steel and drives easily into blacktop. "SURVEY MARK" is imprinted on top of nail for easy identification as a survey mark. The SNM1 has a 1" (25mm) convex top and conical recessed center chamfer for pinpoint accuracy.

Donald Berntsen

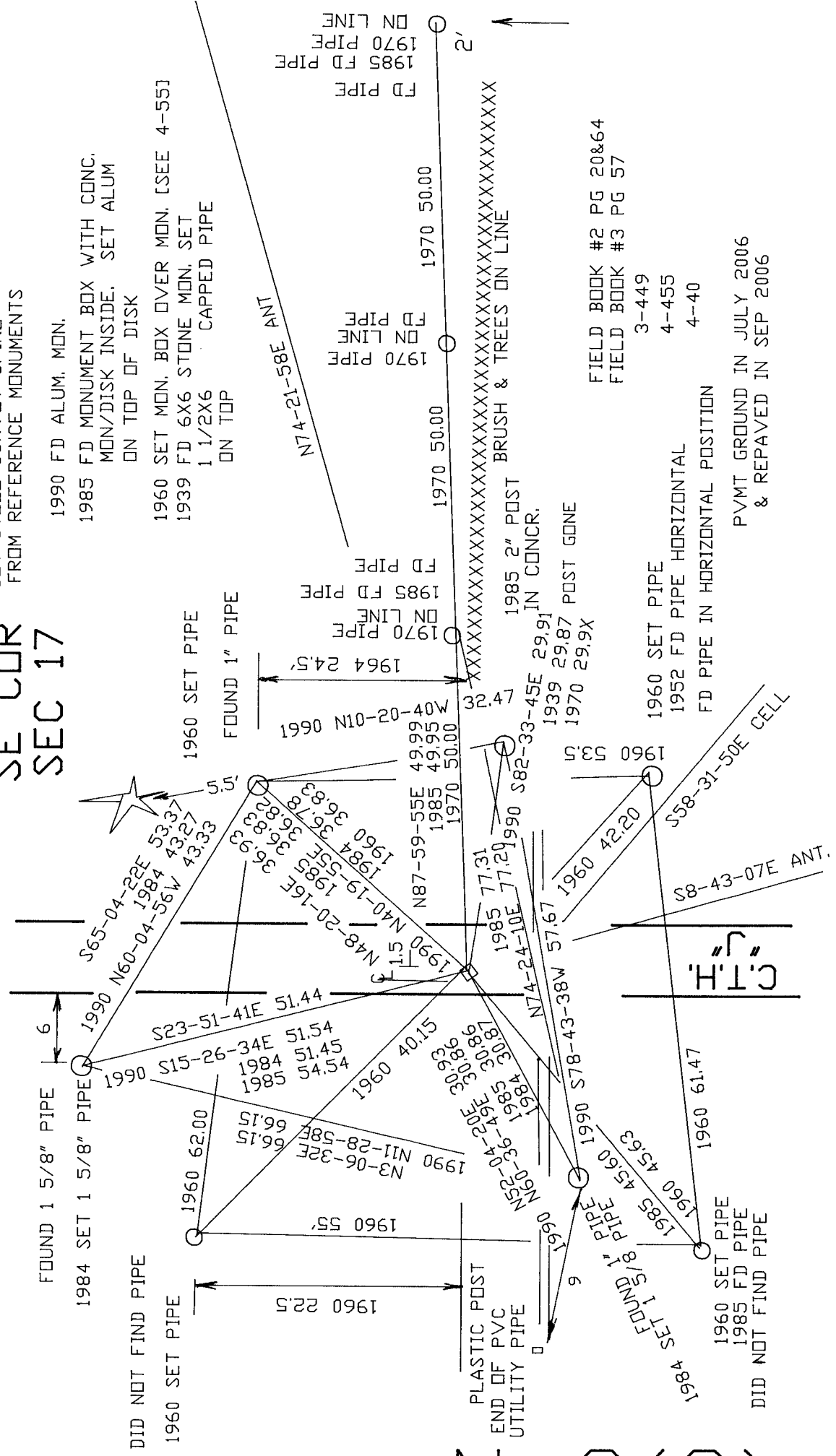
OCT 2 2006

20F3

N-9(2)

SE COR SEC 17

SET STEEL SURVEY SPIKE
FROM REFERENCE MONUMENTS



Donald Barnes
OCT 3 2006

SHEET 3 OF 3

N-19(2)

- 1990 FD ALUM. MON.
- 1985 FD MONUMENT BOX WITH CONC. MON/DISK INSIDE. SET ALUM ON TOP OF DISK
- 1960 SET MON. BOX OVER MON. [SEE 4-55]
- 1939 FD 6X6 STONE MON. SET 1 1/2X6 CAPPED PIPE ON TOP

FIELD BOOK #2 PG 20&64
FIELD BOOK #3 PG 57

3-449
4-455
4-40

PVMT GROUND IN JULY 2006
& REPAVED IN SEP 2006

C.I.H.