

U.S. PUBLIC LAND SURVEY MONUMENT RECORD

For Public Land Survey Corners In:

WI ADMINISTRATIVE CODE A-E 7.08 REQUIREMENT

T. 2N. R. 13E. 4th P.M.

REV 10/23/2004

USMONREC.DWG

CORNER CODE INDEX

LA PRAIRIE TWP

ROCK COUNTY WI

IF AVAILABLE

ROCK COUNTY COORDINATES PREFERRED

A	2	3	4	5	6	7	8	9	10	11	12	13	14	15	16	17	18	19	20	21	22	23	24	25	A
B		6				5				4				3				2			1				B
C																									C
D																									D
E																									E
F																									F
G																									G
H																									H
J																									J
K																									K
L																									L
M																									M
N																									N
O																									O
P																									P
Q																									Q
R																									R
S																									S
T																									T
U																									U
V																									V
W																									W
X																									X
Y																									Y
Z																									Z

North _____ Elev. _____

East _____

Hor. Datum _____ Vert. Datum _____

LATITUDE _____ ELLIPS. HT. _____

LONGITUDE _____

NAD83(91) _____ NETWORK ADJ. YR _____

GPS (X) _____ TRAVERSE (X) _____

BASED ON THE FOLLOWING CONTROL:

PLACE MONUMENT SYMBOL AT PROPER LOCATION ON ABOVE INDEX

CORNER MONUMENT

WITNESS MONUMENT

(a)

BEARINGS ARE BASED ON:

FIELD BOOK _____ PAGE # _____

SHEET 1 OF 3

SHOW A PLAN VIEW DRAWING DEPICTING THE CORNER MONUMENT AND SURROUNDING PHYSICAL FEATURES, INCLUDING THE EXCAVATION AREA AND DEPTH.

PLANNING & ZONING COMMITTEE ADOPTED THIS FORM ON 12/2/1982

CORNER CODE E-9 (2)

LA525

(B) Describe any record evidence, monument evidence, occupational evidence, testimonial evidence or any other material evidence you considered, and whether the monument was found or placed.

1939 SUNNY VOL 3 PG 448 FD 6X6 STONE MON. SET 1 1/2X8
CAPPED PIPE ON TOP. REFERENCED TO TREES & STONE PIER.

1970 BATTERMAN VOL 4 PG 453 FD 1 1/2 CAPPED PIPE OVER CUT
STONE. SET CONC. MON. UNDER MON. BOX. REFERENCED
SAME

1985 BARNES E-9 & FB #2 PG 13 FD 1 1/2X14 PIPE & CUT
LIMESTONE 1.2' DEEP. REPLACED PIPE WITH POLY MON.
REFERENCED SAME.

1990 BARNES E-9(1) & FB# 3 PG 55 FD ALUM. WITH TOP BROKE OFF
@ CENTER OF PVMT. REFERENCED SAME. GTH "J" WILL BE
REPAVED IN 1990.

PAVEMENT WAS GROUND IN JULY 2006 AND REPAVED IN
SEPTEMBER. PRIOR TO GRINDING FD BROKEN POLY, PLACED
MAGNET ON TOP, & REFERENCED SAME.

AFTER REPAVING I SET A STEEL SURVEY NAIL IN THE PVMT
SURFACE.
POLY. MON. & LIMESTONE ARE STILL BELOW THE PVMT SURFACE.

C) Was the corner restored through acceptance of (1) an obliterated evidence location, or, (2) a found perpetuated location?

THE STEEL SURVEY NAIL IS IN HARMONY WITH THE FD REFERENCE
PIPES.

D) Describe any material discrepancy between the location of the corner as restored or reestablished and the location of that corner as previously restored or reestablished by distance and direction. Show the discrepancy on the plan view drawing under (a), above. Show the distances between the corner as previously restored or reestablished and (1) the corner as restored or reestablished, and (2) to at least 4 of the witness monuments shown on the drawing in (a), above.

NO

(E) Was the corner reestablished through lost corner proportionate methods? If so, show the method, including the directions and distances to other public land survey corners used as evidence or used for proportioning the corner location.

NO

I, **Donald Barnes**, hereby certify that the corner location as identified by the corner code index was determined by me under my direction and control and that this U.S. Public Land Survey Monument Record is correct and complete to the best of my knowledge and belief.

Seal

Emboss
Donald Barnes
0CT 2 2006

SHEET 1 OF 3

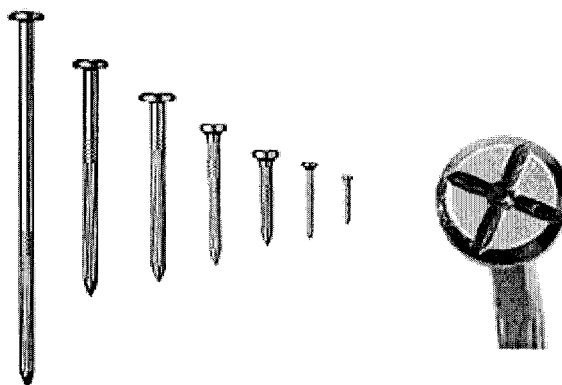
CORNER CODE

E-9(2)

A.E. 7.08 REQUIREMENT

DuraNail

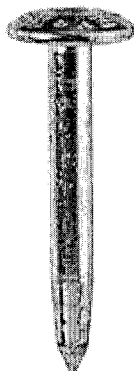
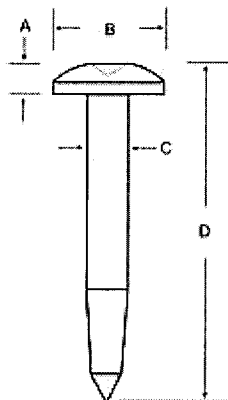
Exclusively From Berntsen



DuraNail

This steel nail will not bend or break and will drive into the asphalt with ease. Not like other nails, it has a deep cross on its larger head along with a center punch. This magnetic nail comes in a variety of lengths. You will receive The Magnetizer with each bag of nails, which will realign the magnetic field after installation to make your DuraNail more detectable

Steel Nail Markers



A = 3/16" (5 mm)
B = 1" (25 mm)
C = 11/32" (9 mm)
D = 3" (76 mm)

The Steel Nail Marker is super strong solid steel and drives easily into blacktop. "SURVEY MARK" is imprinted on top of nail for easy identification as a survey mark. The SNM1 has a 1" (25mm) convex top and conical recessed center chamfer for pinpoint accuracy.

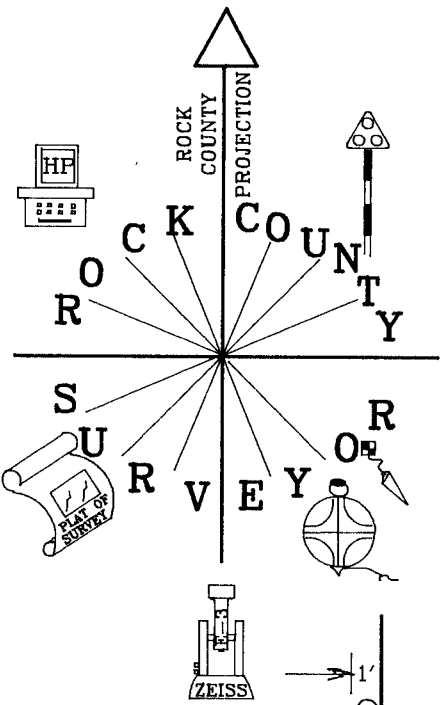
D. J. Barnes
OCT 2 2006

2 OF 3

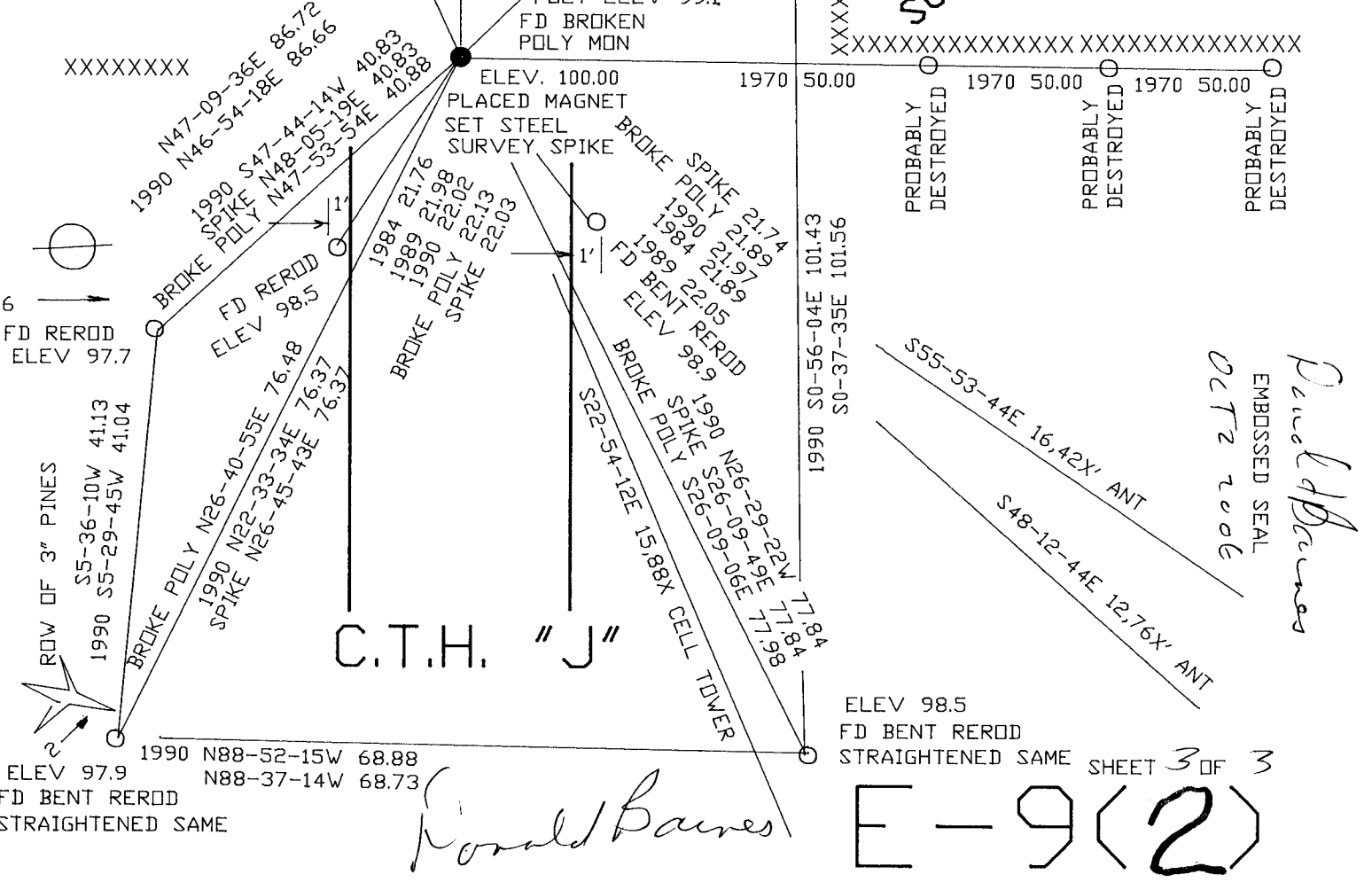
E-9(2)

1990 FB #3 PG 55 FD ALUM. MON.
 REMOVED CAP
 1984 FB#2 PG 13 FD 1 1/2X14"
 CAPPED PIPE & CUT LS 1.2' DEEP
 REPLACED PIPE WITH POLY MON.
 1970 VOL 4 PG 453 FD 1 1/2 CAPPED
 PIPE OVER CUT STONE. SET
 CONC. MON. UNDER MON. BOX
 1939 VOL 3 PG 448 FD 6X6 STONE. MON
 SET 1 1/2X18" CAPPED PIPE

OBSERVATION SHEETS 525 & 1525
 ASSUMED VERTICAL DATUM
 PVMT GROUND IN JULY 2006
 & REPAVED IN SEP 2006



SE COR
 SEC 5
 T2N R13E



Daniel P. Barnes
 EMBOSSED SEAL
 OCT 2 2006

Ronald Barnes

ELEV 98.5
 FD BENT REROD
 STRAIGHTENED SAME SHEET 3 OF 3

E-9(2)