

U.S. PUBLIC LAND SURVEY MONUMENT RECORD

For Public Land Survey Corners In:
T. 2N. R. 13E. 4th P.M.

WI ADMINISTRATIVE CODE A-E 7.08 REQUIREMENT
REV 10/23/2004 USMONREC.DWG

CORNER CODE INDEX

	1	2	3	4	5	6	7	8	9	10	11	12	13	14	15	16	17	18	19	20	21	22	23	24	25
A																									
B																									
C	6																								
D																									
E																									
F																									
G	7																								
H																									
J																									
K	18																								
L																									
M																									
N																									
O																									
P	19																								
Q																									
R																									
S	30																								
T																									
U																									
V																									
W	31																								
X																									
Y																									
Z																									
	1	2	3	4	5	6	7	8	9	10	11	12	13	14	15	16	17	18	19	20	21	22	23	24	25

LA PRAIRIE TWP
ROCK COUNTY WI

IF AVAILABLE
ROCK COUNTY COORDINATES PREFERRED

North _____ Elev. _____

East _____

Hor. Datum _____ Vert. Datum _____

LATITUDE _____ ELLIPS. HT. _____

LONGITUDE _____

NAD83(91) _____ NETWORK ADJ. YR _____

GPS (X) _____ TRAVERSE (X) _____

BASED ON THE FOLLOWING CONTROL:

PLACE MONUMENT SYMBOL AT PROPER LOCATION ON ABOVE INDEX

CORNER MONUMENT

WITNESS MONUMENT

BEARINGS ARE BASED ON: _____

FIELD BOOK _____ PAGE # _____

SHEET 1 OF 3

SHOW A PLAN VIEW DRAWING DEPICTING THE CORNER MONUMENT AND SURROUNDING PHYSICAL FEATURES, INCLUDING THE EXCAVATION AREA AND DEPTH.

PLANNING & ZONING COMMITTEE ADOPTED THIS FORM ON 12/2/1982

CORNER CODE B 9 (2)

LA3516

(B) Describe any record evidence, monument evidence, occupational evidence, testimonial evidence or any other material evidence you considered, and whether the monument was found or placed.

1988 BARNES B-9 & FB #3 PG 42 & 44 FD 3/4" PIPE 0.3' DEEP & WIDOT CONCRETE MON/DISK AS REFERENCE MONUMENTS. POINT IS PANELED. REFERENCED SAME.

1988 BARNES B-9(1) & FB # 3 PG 47 FD MON BOX WITH ALUM. DISK IN CONG. & WIDOT CONCRETE MON/DISK AS REFERENCE MONUMENTS. THERE IS A "X" ON THE DISK. THE ACTUAL POSITION OF THE COR IS 0.03' SOUTH & 0.07' EAST OF THE "X". CALLS FOR 1338.00 (REC 1338.01) TO THE NW COR SEC 4. THE SURFACE WILL BE REPAVED IN 1990.

PAVEMENT WAS GROUND IN JULY 2006 AND REPAVED IN SEPTEMBER.

PRIOR TO GRINDING, I FOUND A CUT "X" IN ALUM. DISK IN ROUND MONUMENT BOX & REFERENCED SAME. AFTER REPAVING I SET A DURA-NAIL IN THE PVMT SURFACE. CONCRETE MON/ALUM DISK IS STILL BELOW THE PVMT SURFACE.

C) Was the corner restored through acceptance of (1) an obliterated evidence location, or, (2) a found perpetuated location?

THE DURA-NAIL IS IN HARMONY WITH THE FD REFERENCE PIPES.

D) Describe any material discrepancy between the location of the corner as restored or reestablished and the location of that corner as previously restored or reestablished by distance and direction. Show the discrepancy on the plan view drawing under (a), above. Show the distances between the corner as previously restored or reestablished and (1) the corner as restored or reestablished, and (2) to at least 4 of the witness monuments shown on the drawing in (a), above.

YES.

(E) Was the corner reestablished through lost corner proportionate methods? If so, show the method, including the directions and distances to other public land survey corners used as evidence or used for proportioning the corner location.

NO

I, **Donald Barnes**, hereby certify that the corner location as identified by the corner code index was determined by me under my direction and control and that this U.S. Public Land Survey Monument Record is correct and complete to the best of my knowledge and belief.

Seal

Emboss
Donald Barnes

Oct 6, 2006

SHEET 1 OF 3

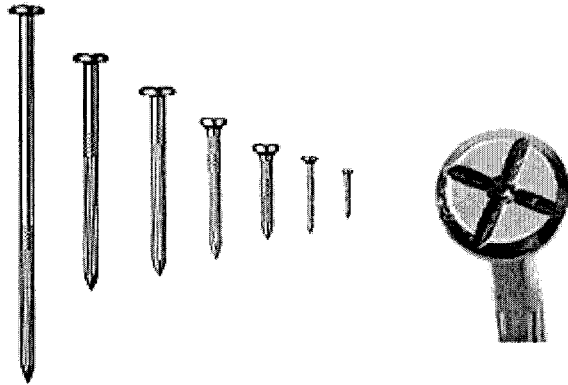
CORNER CODE

B-9(2)

A.E. 7.08 REQUIREMENT

DuraNail

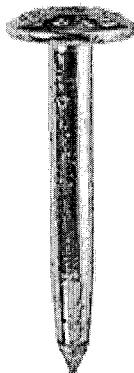
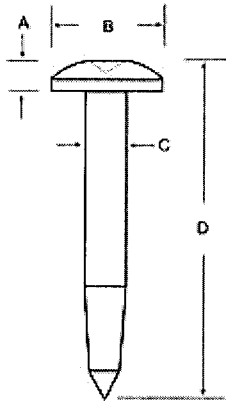
Exclusively From Berntsen



DuraNail

This steel nail will not bend or break and will drive into the asphalt with ease. Not like other nails, it has a deep cross on its larger head along with a center punch. This magnetic nail comes in a variety of lengths. You will receive The Magnetizer with each bag of nails, which will realign the magnetic field after installation to make your DuraNail more detectable

Steel Nail Markers



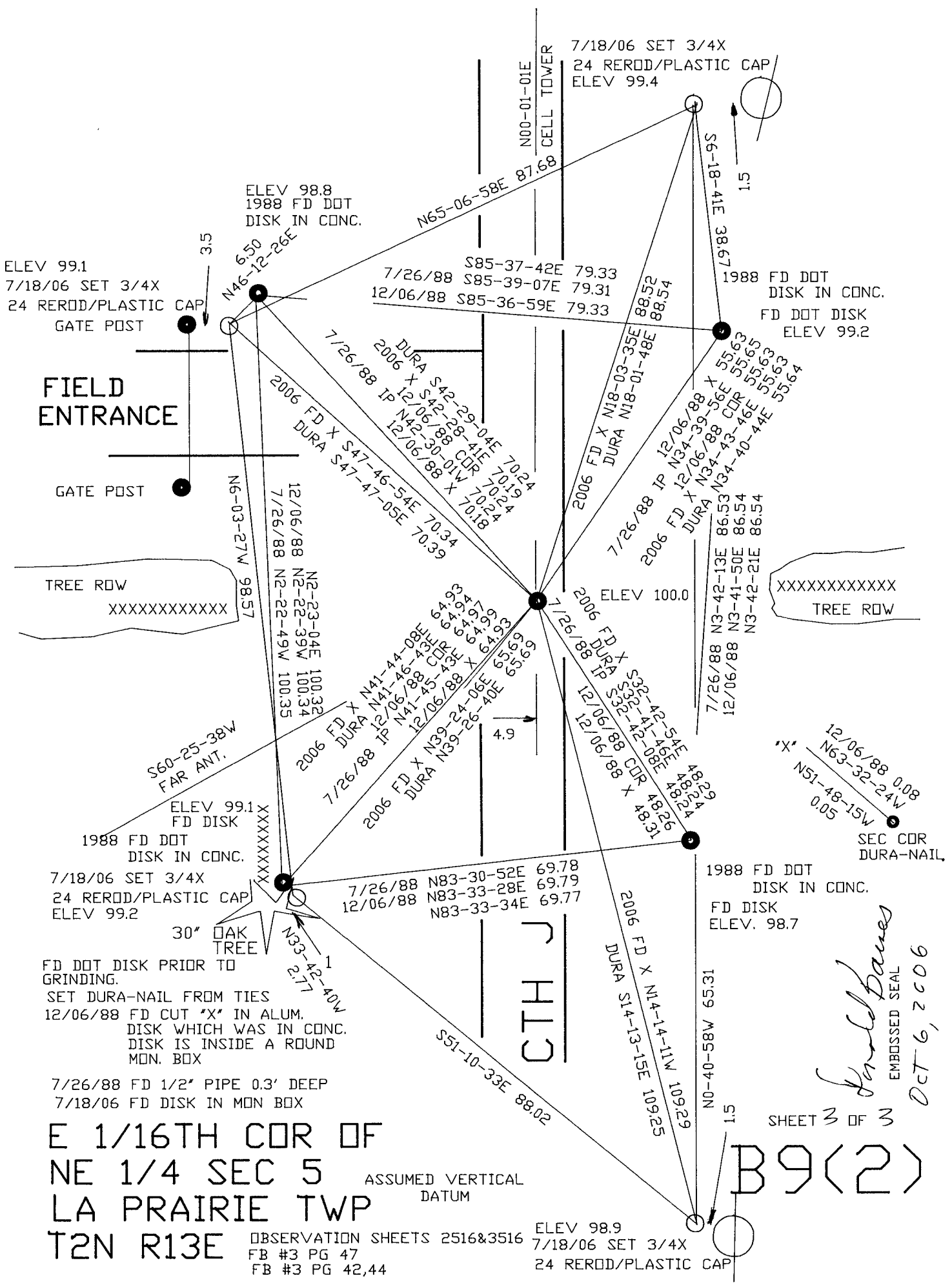
A = 3/16" (5 mm)
B = 1" (25 mm)
C = 11/32" (9 mm)
D = 3" (76 mm)

The Steel Nail Marker is super strong solid steel and drives easily into blacktop. "SURVEY MARK" is imprinted on top of nail for easy identification as a survey mark. The SNM1 has a 1" (25mm) convex top and conical recessed center chamfer for pinpoint accuracy.

2 of 3

Ronald Kanes
Oct 5, 2006

B 9(2)



E 1/16TH COR OF
 NE 1/4 SEC 5
 LA PRAIRIE TWP
 T2N R13E

ASSUMED VERTICAL
 DATUM

OBSERVATION SHEETS 2516&3516
 FB #3 PG 47
 FB #3 PG 42,44

ELEV 98.9
 7/18/06 SET 3/4X
 24 REROD/PLASTIC CAP

B9(2)

Donald Daves
 EMBOSSED SEAL
 OCT 6, 2006

SHEET 3 OF 3