

# U.S. PUBLIC LAND SURVEY MONUMENT RECORD

For Public Land Survey Corners In:  
T. 2 N. R. 13 E. 4th P.M.  
CORNER CODE INDEX

WI ADMINISTRATIVE CODE A-E 7.08 REQUIREMENT  
REV 10/23/2004 USMONREC.DWG

	2	3	4	5	6	7	8	9	10	11	12	13	14	15	16	17	18	19	20	21	22	23	24	25	
A																									
B																									
C	6																								
D																									
E																									
F																									
G	7																								
H																									
J																									
K	18																								
L																									
M																									
N																									
O																									
P	19																								
Q																									
R																									
S																									
T	30																								
U																									
V																									
W																									
X	31																								
Y																									
Z																									
	1	2	3	4	5	6	7	8	9	10	11	12	13	14	15	16	17	18	19	20	21	22	23	24	25

LA PRAIRIE TWP

ROCK COUNTY WI

IF AVAILABLE  
ROCK COUNTY COORDINATES PREFERRED

North \_\_\_\_\_ Elev. \_\_\_\_\_

East \_\_\_\_\_

Hor. Datum \_\_\_\_\_ Vert. Datum \_\_\_\_\_

LATITUDE \_\_\_\_\_ ELLIPS. HT. \_\_\_\_\_

LONGITUDE \_\_\_\_\_

NAD83(91) \_\_\_\_\_ NETWORK ADJ. YR \_\_\_\_\_

GPS (X) \_\_\_\_\_ TRAVERSE (X) \_\_\_\_\_

BASED ON THE FOLLOWING CONTROL:

◆ CORNER MONUMENT

○ WITNESS MONUMENT

(a) BEARINGS ARE BASED ON: \_\_\_\_\_

FIELD BOOK \_\_\_\_\_ PAGE # \_\_\_\_\_

SHEET 1 OF 3

SHOW A PLAN VIEW DRAWING DEPICTING THE CORNER MONUMENT AND SURROUNDING PHYSICAL FEATURES, INCLUDING THE EXCAVATION AREA AND DEPTH.

PLANNING & ZONING COMMITTEE ADOPTED THIS FORM ON 12/2/1982

CORNER CODE Z-9(2)

LA625

(B) Describe any record evidence, monument evidence, occupational evidence, testimonial evidence or any other material evidence you considered, and whether the monument was found or placed.

1939 SUNNY VOL 3 PG 450 FD 1" PIPE 7" LOW, NOT IN BLACKTOP.

1964 BATTERMAN VOL 4 PG 201 FD CUT STONE & REFERENCED

1973 LEE VOL 4 PG 201 REFERENCED CORNER.

1985 BARNES Z-11 & FB #2 PG 26 & 44 SET POLY & TIES

1990 BARNES Z-11(1) FB#3 PG 60 FD POLY. & REFERENCED SAME.

RECOVERED POLY. PRIOR TO GRINDING & REFERENCED SAME.

TOP OF MON. WAS BROKEN OFF. ACCEPTED FD POLY. MON. AFTER REPAVING I SET A DURA-NAIL IN THE PVMT SURFACE. POLY & L.S. IS UNDER PVMT SURFACE.

C) Was the corner restored through acceptance of (1) an obliterated evidence location, or, (2) a found perpetuated location?

POLY. MON IS IN HARMONY WITH REFERENCE MONUMENTS.

D) Describe any material discrepancy between the location of the corner as restored or reestablished and the location of that corner as previously restored or reestablished by distance and direction. Show the discrepancy on the plan view drawing under (a), above. Show the distances between the corner as previously restored or reestablished and (1) the corner as restored or reestablished, and (2) to at least 4 of the witness monuments shown on the drawing in (a), above.

NONE

(E) Was the corner reestablished through lost corner proportionate methods? If so, show the method, including the directions and distances to other public land survey corners used as evidence or used for proportioning the corner location.

I, **Donald Barnes**, hereby certify that the corner location as identified by the corner code index was determined by me under my direction and control and that this U.S. Public Land Survey Monument Record is correct and complete to the best of my knowledge and belief.

Seal

OCT 3 2006

Emboss

*Donald Barnes*

SHEET 1 OF 3

CORNER CODE

**Z-9(2)**

A.E. 7.08 REQUIREMENT

# U.S. PUBLIC LAND SURVEY MONUMENT RECORD

For Public Land Survey Corners In:  
T. 2 N. R. 13 E. 4th P.M.  
CORNER CODE INDEX

WI ADMINISTRATIVE CODE A-E 7.08 REQUIREMENT  
REV 10/23/2004 USMONREC.DWG

A	1	2	3	4	5	6	7	8	9	10	11	12	13	14	15	16	17	18	19	20	21	22	23	24	25	A
B																										B
C																										C
D																										D
E																										E
F																										F
G																										G
H																										H
J																										J
K																										K
L																										L
M																										M
N																										N
O																										O
P																										P
Q																										Q
R																										R
S																										S
T																										T
U																										U
V																										V
W																										W
X																										X
Y																										Y
Z																										Z

PLACE MONUMENT SYMBOL  AT PROPER LOCATION ON ABOVE INDEX

LA PRAIRIE TWP

ROCK COUNTY WI

IF AVAILABLE  
ROCK COUNTY COORDINATES PREFERRED

North \_\_\_\_\_ Elev. \_\_\_\_\_

East \_\_\_\_\_

Hor. Datum \_\_\_\_\_ Vert. Datum \_\_\_\_\_

LATITUDE \_\_\_\_\_ ELLIPS. HT. \_\_\_\_\_

LONGITUDE \_\_\_\_\_

NAD83(91) \_\_\_\_\_ NETWORK ADJ. YR \_\_\_\_\_

GPS (X) \_\_\_\_\_ TRAVERSE (X) \_\_\_\_\_

BASED ON THE FOLLOWING CONTROL:  
\_\_\_\_\_

CORNER MONUMENT

WITNESS MONUMENT

BEARINGS ARE BASED ON:

IN JULY 2006 CTH "J"s ASPHALT SURFACE WAS REMOVED BY A GRINDING PROCESS. IN SEPTEMBER 2006 IT WAS RESURFACED WITH ASPHALT. FROM THE TIES I PLACED EITHER A 3" STEEL SURVEY MARKER SPIKE OR A 3" DURANAIL FROM THE TIES. THE MONUMENTS OF RECORD ARE STILL BELOW THE PAVMENT.

FIELD BOOK \_\_\_\_\_ PAGE # \_\_\_\_\_

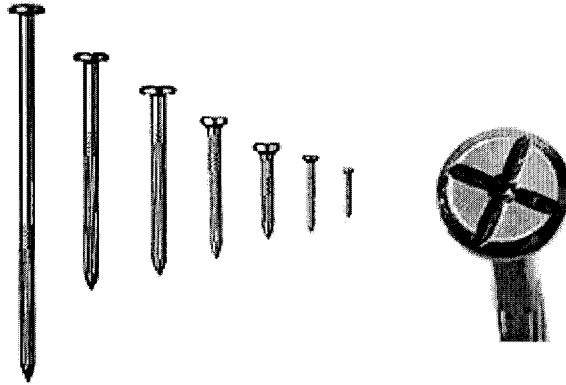
SHEET 2 OF 3

SHOW A PLAN VIEW DRAWING DEPICTING THE CORNER MONUMENT AND SURROUNDING PHYSICAL FEATURES, INCLUDING THE EXCAVATION AREA AND DEPTH.

PLANNING & ZONING COMMITTEE ADOPTED THIS FORM ON 12/2/1982

CORNER CODE 7-9(2)

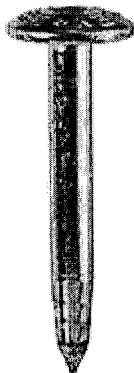
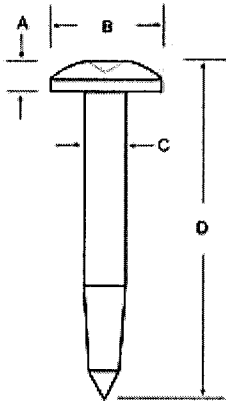
**DuraNail**  
Exclusively From Berntsen



### DuraNail

This steel nail will not bend or break and will drive into the asphalt with ease. Not like other nails, it has a deep cross on its larger head along with a center punch. This magnetic nail comes in a variety of lengths. You will receive The Magnetizer with each bag of nails, which will realign the magnetic field after installation to make your DuraNail more detectable

### Steel Nail Markers



A = 3/16" (5 mm)  
B = 1" (25 mm)  
C = 11/32" (9 mm)  
D = 3" (76 mm)

The Steel Nail Marker is super strong solid steel and drives easily into blacktop. "SURVEY MARK" is imprinted on top of nail for easy identification as a survey mark. The SNM1 has a 1" (25mm) convex top and conical recessed center chamfer for pinpoint accuracy.

Donald Barnes  
OCT 3 2006

2 of 3  
Z-9(2)

SE COR  
SEC 32  
LA PRAIRIE TWP  
T2N R13E

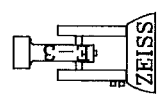
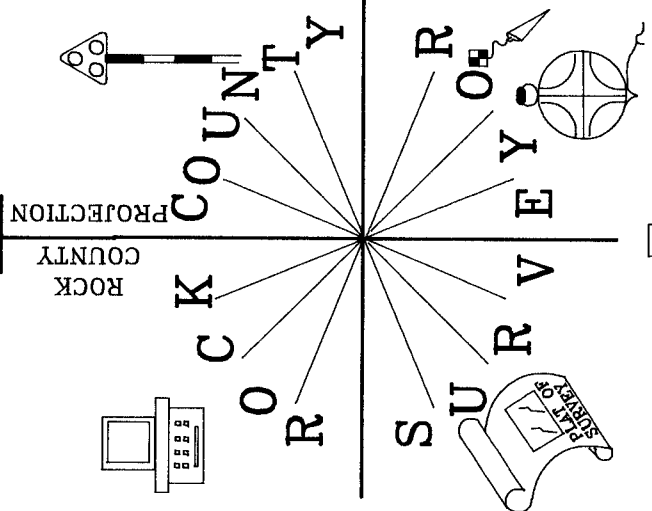
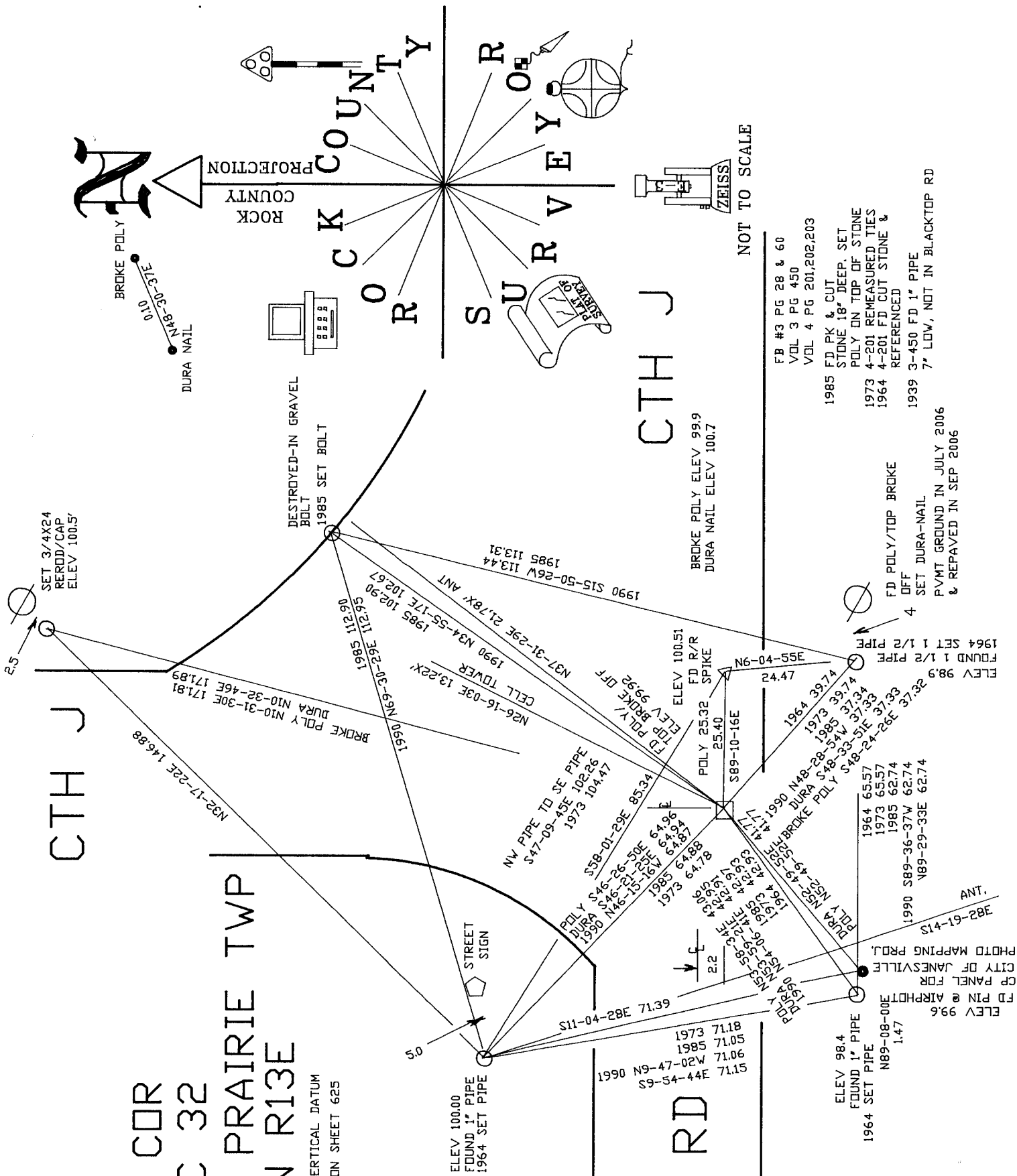
ASSUMED VERTICAL DATUM  
OBSERVATION SHEET 625

*Donald Bausas*  
EMBOSSED SEAL  
OCT 3 2006

TOWN RD  
LINE RD

SHEET 3 OF 3

Z-9(2)



NOT TO SCALE

CTH J

FB #3 PG 28 & 60  
VOL 3 PG 450  
VOL 4 PG 201,202,203

1985 FD PK & CUT  
STONE 18" DEEP SET  
POLY ON TOP OF STONE  
1973 4-201 REMEASURED TIES  
1964 4-201 FD CUT STONE &  
REFERENCED

1939 3-450 FD 1" PIPE  
7" LOW, NOT IN BLACKTOP RD

BROKE POLY ELEV 99.9  
DURA NAIL ELEV 100.7

4  
FD POLY/TOP BROKE  
SET DURA-NAIL  
PVTM GROUND IN JULY 2006  
& REPAVED IN SEP 2006

ELEV 98.9  
FOUND 1 1/2 PIPE  
1964 SET 1 1/2 PIPE

1964 65.57  
1973 65.57  
1985 62.74  
1990 58.9-36-37W 62.74  
V89-29-33E 62.74

ELEV 99.6  
FD PIN @ AIRPHOT  
CP PANEL FOR  
CITY OF JAMESVILLE  
PHOTO MAPPING PROJ.

1973 71.18  
1985 71.05  
1990 N9-47-02W 71.06  
S9-54-44E 71.15

ELEV 98.4  
FOUND 1" PIPE  
1964 SET PIPE  
N89-08-00E 1.47

1990 N3-58-31E 71.39  
1990 N3-58-31E 71.39

1990 N3-58-31E 71.39  
1990 N3-58-31E 71.39

1990 N3-58-31E 71.39  
1990 N3-58-31E 71.39

1990 N3-58-31E 71.39  
1990 N3-58-31E 71.39

1990 N3-58-31E 71.39  
1990 N3-58-31E 71.39

1990 N3-58-31E 71.39  
1990 N3-58-31E 71.39

1990 N3-58-31E 71.39  
1990 N3-58-31E 71.39

1990 N3-58-31E 71.39  
1990 N3-58-31E 71.39

1990 N3-58-31E 71.39  
1990 N3-58-31E 71.39

1990 N3-58-31E 71.39  
1990 N3-58-31E 71.39

1990 N3-58-31E 71.39  
1990 N3-58-31E 71.39

1990 N3-58-31E 71.39  
1990 N3-58-31E 71.39

1990 N3-58-31E 71.39  
1990 N3-58-31E 71.39

1990 N3-58-31E 71.39  
1990 N3-58-31E 71.39

1990 N3-58-31E 71.39  
1990 N3-58-31E 71.39

1990 N3-58-31E 71.39  
1990 N3-58-31E 71.39

1990 N3-58-31E 71.39  
1990 N3-58-31E 71.39

1990 N3-58-31E 71.39  
1990 N3-58-31E 71.39

1990 N3-58-31E 71.39  
1990 N3-58-31E 71.39

1990 N3-58-31E 71.39  
1990 N3-58-31E 71.39

1990 N3-58-31E 71.39  
1990 N3-58-31E 71.39

1990 N3-58-31E 71.39  
1990 N3-58-31E 71.39

1990 N3-58-31E 71.39  
1990 N3-58-31E 71.39

1990 N3-58-31E 71.39  
1990 N3-58-31E 71.39

1990 N3-58-31E 71.39  
1990 N3-58-31E 71.39

1990 N3-58-31E 71.39  
1990 N3-58-31E 71.39

1990 N3-58-31E 71.39  
1990 N3-58-31E 71.39

1990 N3-58-31E 71.39  
1990 N3-58-31E 71.39

1990 N3-58-31E 71.39  
1990 N3-58-31E 71.39

1990 N3-58-31E 71.39  
1990 N3-58-31E 71.39

1990 N3-58-31E 71.39  
1990 N3-58-31E 71.39

1990 N3-58-31E 71.39  
1990 N3-58-31E 71.39

1990 N3-58-31E 71.39  
1990 N3-58-31E 71.39

1990 N3-58-31E 71.39  
1990 N3-58-31E 71.39

1990 N3-58-31E 71.39  
1990 N3-58-31E 71.39

1990 N3-58-31E 71.39  
1990 N3-58-31E 71.39

1990 N3-58-31E 71.39  
1990 N3-58-31E 71.39

1990 N3-58-31E 71.39  
1990 N3-58-31E 71.39