

Paper weight-110# (minimum) Black nonfading ink required

U.S. PUBLIC LAND SURVEY MONUMENT RECORD

For Public Land Survey Corners In:
 T. 2 N. R. 12 E. 4th P.M.

WI ADMINISTRATIVE CODE A-E 7.98 REQUIREMENT
REV 10/2004 USNR002C.DWG

CORNER CODE INDEX

A	2	3	4	5	6	7	8	9	10	11	12	13	14	15	16	17	18	19	20	21	22	23	24	25
B	6	5	4	3	2	1																		
C																								
D																								
E																								
F																								
G																								
H																								
I																								
J																								
K																								
L																								
M																								
N																								
O																								
P																								
Q																								
R																								
S																								
T																								
U																								
V																								
W																								
X																								
Y																								
Z																								

SPRING VALLEY TWP
 ROCK COUNTY WI
 IF AVAILABLE
 ROCK COUNTY COORDINATES PREFERRED

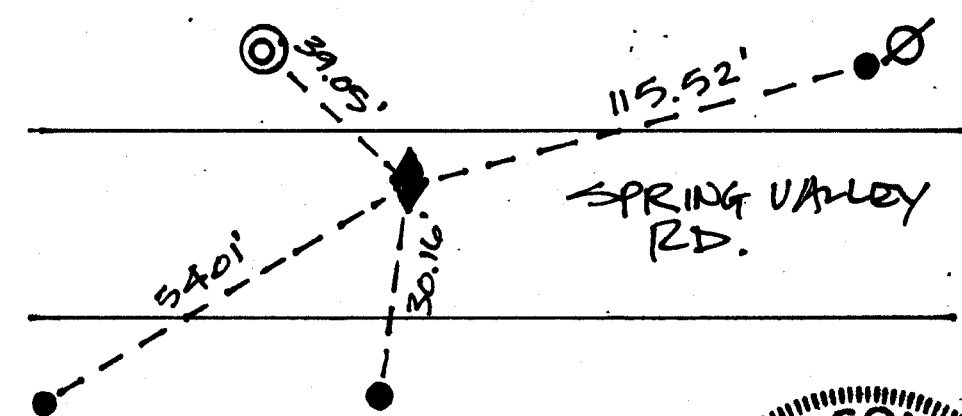
North _____ Elev. _____
 East _____
 Hor. Datum _____ Vert. Datum _____
 LATITUDE _____ ELLIPS. HT. _____
 LONGITUDE _____
 NAD83(91) _____ NETWORK ADJ. YR _____
 GPS (X) _____ TRAVERSE (X) _____
 BASED ON THE FOLLOWING CONTROL:

PLACE MONUMENT SYMBOL \blacklozenge AT PROPER LOCATION ON ABOVE INDEX

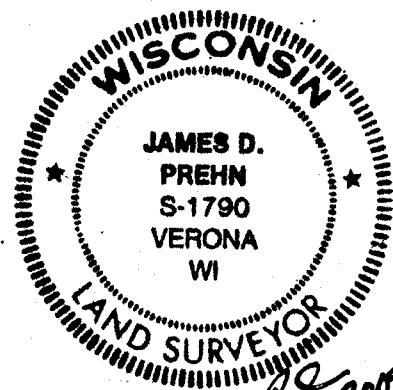
\blacklozenge CORNER MONUMENT \circ WITNESS MONUMENT

(a)

BEARINGS ARE BASED ON:



- \blacklozenge P.K. NAIL END.
- \bullet 1/2" ϕ REBAR END.
- \odot 1 1/4" ϕ X 24" REBAR SET



James D. Prehn
 10 MAY 2007

FIELD BOOK _____ PAGE # _____ SHEET 1 OF 2

SHOW A PLAN VIEW DRAWING DEPICTING THE CORNER MONUMENT AND SURROUNDING PHYSICAL FEATURES, INCLUDING THE EXCAVATION AREA AND DEPTH.

PLANNING & ZONING COMMITTEE ADOPTED THIS FORM ON 12/2/1982

CORNER CODE E-23(1)

(B) Describe any record evidence, monument evidence, occupational evidence, testimonial evidence or any other material evidence you considered, and whether the monument was found or placed.

FOUND PK NAIL, ACCEPTED AS SECTION CORNER LOCATION, DID NOT DIG INTO PAVEMENT TO FIND MONUMENT. SECTION CORNER PREVIOUSLY TIED BY DON BARNES ON TIE SHEET WHICH IS UNDATED. DIFFERENCES ARE SHOWN ON ATTACHED MAP AS "PREVIOUSLY RECORDED" INFORMATION.

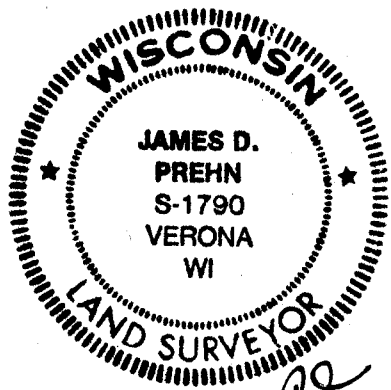
C) Was the corner restored through acceptance of (1) an obliterated evidence location, or, (2) a found perpetuated location?

D) Describe any material discrepancy between the location of the corner as restored or reestablished and the location of that corner as previously restored or reestablished by distance and direction. Show the discrepancy on the plan view drawing under (a), above. Show the distances between the corner as previously restored or reestablished and (1) the corner as restored or reestablished, and (2) to at least 4 of the witness monuments shown on the drawing in (a), above.

(E) Was the corner reestablished through lost corner proportionate methods? If so, show the method, including the directions and distances to other public land survey corners used as evidence or used for proportioning the corner location.

I, James D. Prehn, S-1790, hereby certify that the corner location as identified by the corner code index was determined by me under my direction and control and that this U.S. Public Land Survey Monument Record is correct and complete to the best of my knowledge and belief.

Seal



James D. Prehn
10 AUG. 2009

SHEET 2 OF 2

E-23 (1)

CORNER CODE

A-E 7.08 REQUIREMENT