

U.S. PUBLIC LAND SURVEY MONUMENT RECORD

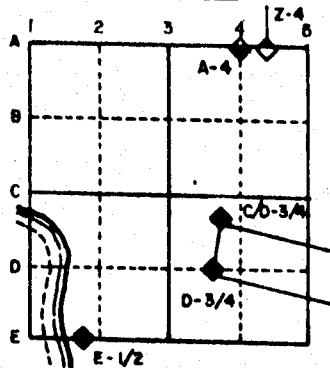
For Public Land Survey Corners in the
T. 2 N., R. 9 E.

CORNER CODE INDEX

| | | | | | | | | | | | | | | | | | | | | | | | | | | |
|---|---|---|---|---|---|---|---|---|---|----|----|----|----|----|----|----|----|----|----|----|----|----|----|----|----|--|
| | 1 | 2 | 3 | 4 | 5 | 6 | 7 | 8 | 9 | 10 | 11 | 12 | 13 | 14 | 15 | 16 | 17 | 18 | 19 | 20 | 21 | 22 | 23 | 24 | 25 | |
| A | | | | | | | | | | | | | | | | | | | | | | | | | | |
| B | | | | | | | | | | | | | | | | | | | | | | | | | | |
| C | 6 | | | | | | | | | | | | | | | | | | | | | | | | | |
| D | | 5 | | | | | | | | | | | | | | | | | | | | | | | | |
| E | | | 4 | | | | | | | | | | | | | | | | | | | | | | | |
| F | | | | 3 | | | | | | | | | | | | | | | | | | | | | | |
| G | | | | | 2 | | | | | | | | | | | | | | | | | | | | | |
| H | | | | | | | | | | | | | | | | | | | | | | | | | | |
| I | | | | | | | | | | | | | | | | | | | | | | | | | | |
| J | | | | | | | | | | | | | | | | | | | | | | | | | | |
| K | | | | | | | | | | | | | | | | | | | | | | | | | | |
| L | | | | | | | | | | | | | | | | | | | | | | | | | | |
| M | | | | | | | | | | | | | | | | | | | | | | | | | | |
| N | | | | | | | | | | | | | | | | | | | | | | | | | | |
| O | | | | | | | | | | | | | | | | | | | | | | | | | | |
| P | | | | | | | | | | | | | | | | | | | | | | | | | | |
| Q | | | | | | | | | | | | | | | | | | | | | | | | | | |
| R | | | | | | | | | | | | | | | | | | | | | | | | | | |
| S | | | | | | | | | | | | | | | | | | | | | | | | | | |
| T | | | | | | | | | | | | | | | | | | | | | | | | | | |
| U | | | | | | | | | | | | | | | | | | | | | | | | | | |
| V | | | | | | | | | | | | | | | | | | | | | | | | | | |
| W | | | | | | | | | | | | | | | | | | | | | | | | | | |
| X | | | | | | | | | | | | | | | | | | | | | | | | | | |
| Y | | | | | | | | | | | | | | | | | | | | | | | | | | |
| Z | | | | | | | | | | | | | | | | | | | | | | | | | | |

PLACE MONUMENT SYMBOL (◆) AT PROPER LOCATION ON ABOVE INDEX

EXAMPLE



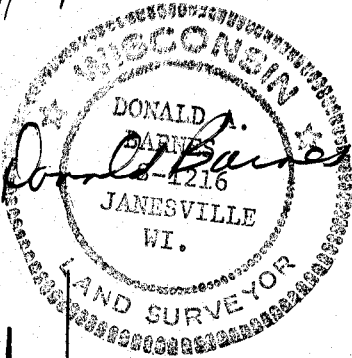
SPRING VALLEY TWP
ROCK COUNTY WI

IF AVAILABLE
STATE PLANE COORDINATES

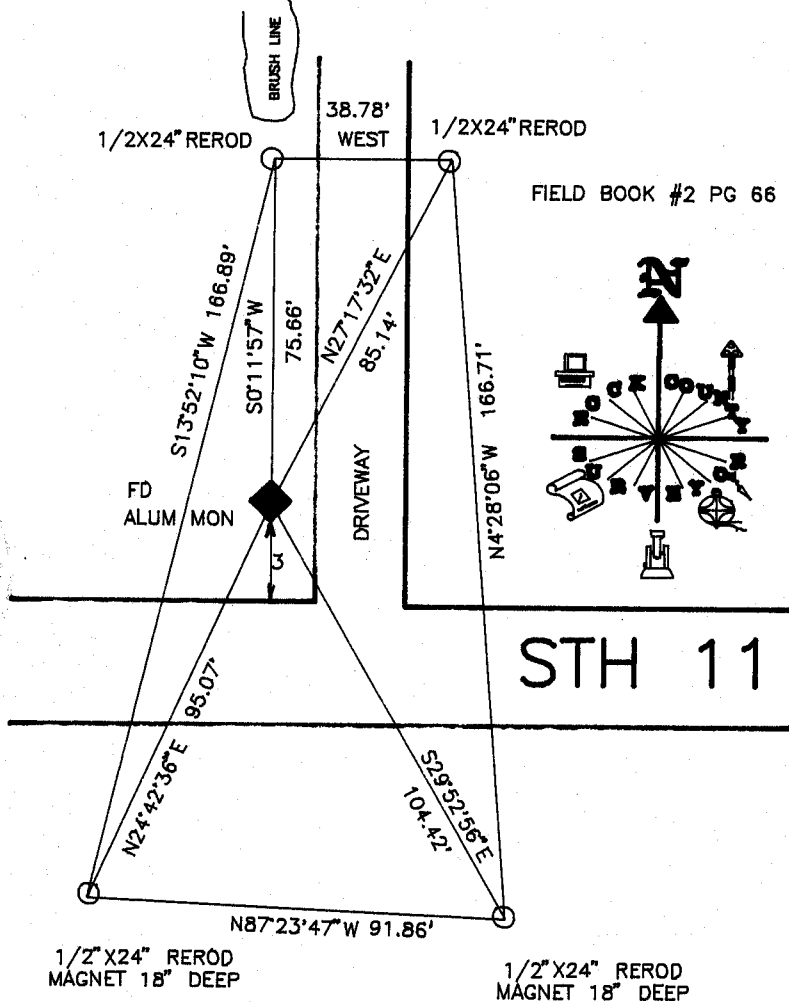
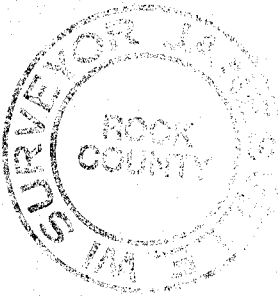
North (Y) _____ Elev. (Z) _____
 East (X) _____ Zone _____
 Hor. Datum _____ Vert. Datum _____

(a) ◆ CORNER MONUMENT ○ WITNESS MONUMENT

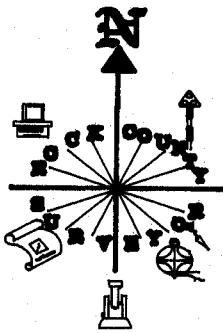
6/13/89



BEARINGS ARE BASED ON:



FIELD BOOK #2 PG 66



STH 11

FIELD BOOK 2 PAGE # 66

MICROFILMED

SHOW A PLAN VIEW DRAWING DEPICTING THE CORNER MONUMENT AND SURROUNDING PHYSICAL FEATURES, INCLUDING THE EXCAVATION AREA AND DEPTH. THE CORNER MONUMENT SHALL HAVE THE FOLLOWING CHARACTERISTICS: 1) HAVE AT LEAST TWO PREDETERMINED BREAK-OFF POINTS. 2) IF BROKEN, LEAVE A PERMANENTLY MAGNETIZED REMNANT AT THE ORIGINAL POINT. 3) MUST BE EXTENDABLE. 4) THE CAP IS INSCRIBED: ROCK COUNTY SURVEY MONUMENT - PENALTY FOR DISTURBING MARKER. 5) OR AN EXISTING CUT LIMESTONE. AN IRON PIPE 1 1/2" x 4" (MINIMUM) MAY BE USED IN AREAS WHERE GROUND WATER IS WITHIN ONE FOOT OF THE SURFACE. IF THE CORNER IS OCCUPIED BY AN IMPROVEMENT (MANHOLE, BURIED CABLE, ETC.) ANY DURABLE, DISTINCT MONUMENT MAY BE USED. CORNERS SHALL BE REFERENCED WITH AT LEAST 4 DURABLE WITNESS MONUMENTS. WITNESS MONUMENTS SHALL BE MADE OF CONCRETE, NATURAL STONE, IRON OR OTHER EQUALLY DURABLE MATERIAL, EXCEPT WOOD. DESCRIBE THE CORNER AND THE WITNESS MONUMENTS.

CORNER CODE:
N 3 (2)

U.S. PUBLIC LAND SURVEY MONUMENT RECORD

For Public Land Survey Corners in:

WI ADMINISTRATIVE CODE A-E 7.08 REQUIREMENT

T. 2N., R. 10 E

CORNER CODE INDEX

| | | | | | | | | | | | | | | | | | | | | | | | | | |
|---|----|----|----|----|----|----|----|----|----|----|----|----|----|----|----|----|----|----|----|----|----|----|----|----|----|
| A | 1 | 2 | 3 | 4 | 5 | 6 | 7 | 8 | 9 | 10 | 11 | 12 | 13 | 14 | 15 | 16 | 17 | 18 | 19 | 20 | 21 | 22 | 23 | 24 | 25 |
| B | 6 | | | | | | | | | | | | | | | | | | | | | | | | |
| C | | 5 | | | | | | | | | | | | | | | | | | | | | | | |
| D | | | 4 | | | | | | | | | | | | | | | | | | | | | | |
| E | | | | 3 | | | | | | | | | | | | | | | | | | | | | |
| F | | | | | 2 | | | | | | | | | | | | | | | | | | | | |
| G | 1 | | | | | | | | | | | | | | | | | | | | | | | | |
| H | | 8 | | | | | | | | | | | | | | | | | | | | | | | |
| I | | | 9 | | | | | | | | | | | | | | | | | | | | | | |
| J | | | | 10 | | | | | | | | | | | | | | | | | | | | | |
| K | | | | | 11 | | | | | | | | | | | | | | | | | | | | |
| L | | | | | | 12 | | | | | | | | | | | | | | | | | | | |
| M | 18 | | | | | | | | | | | | | | | | | | | | | | | | |
| N | | 17 | | | | | | | | | | | | | | | | | | | | | | | |
| O | | | 16 | | | | | | | | | | | | | | | | | | | | | | |
| P | | | | 15 | | | | | | | | | | | | | | | | | | | | | |
| Q | | | | | 14 | | | | | | | | | | | | | | | | | | | | |
| R | | | | | | 13 | | | | | | | | | | | | | | | | | | | |
| S | | | | | | | 12 | | | | | | | | | | | | | | | | | | |
| T | | | | | | | | 11 | | | | | | | | | | | | | | | | | |
| U | | | | | | | | | 10 | | | | | | | | | | | | | | | | |
| V | | | | | | | | | | 9 | | | | | | | | | | | | | | | |
| W | | | | | | | | | | | 8 | | | | | | | | | | | | | | |
| X | | | | | | | | | | | | 7 | | | | | | | | | | | | | |
| Y | | | | | | | | | | | | | 6 | | | | | | | | | | | | |
| Z | | | | | | | | | | | | | | 5 | | | | | | | | | | | |

SPRING VALLEY TWP
ROCK COUNTY WI

IF AVAILABLE
ROCK COUNTY COORDINATES PREFERRED

North _____ Elev. _____

East _____

Hor. Datum _____ Vert. Datum _____

LATITUDE _____ ELLIPS. HT. _____

LONGITUDE _____

GPS (X) _____ TRAVERSE (X) _____

BASED ON THE FOLLOWING CONTROL:

PLACE MONUMENT SYMBOL \blacklozenge AT PROPER LOCATION ON ABOVE INDEX

\blacklozenge CORNER MONUMENT

\circ WITNESS MONUMENT

BEARINGS ARE BASED ON: COUNTY PROJECTION

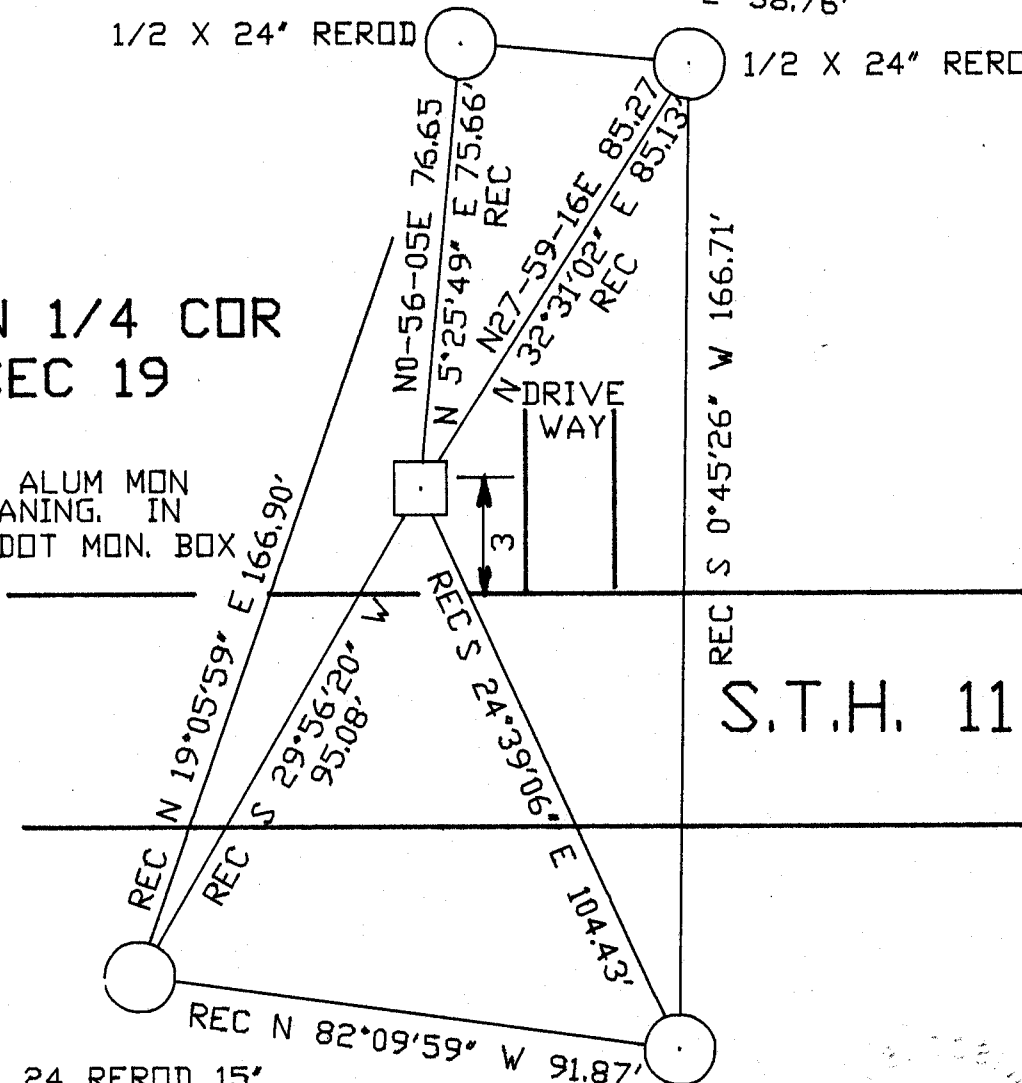
REC S $89-29-27E$ 38.77
REC S $84-45-46$ E 38.76'

1/2 X 24" REROD

1/2 X 24" REROD

N 1/4 COR
SEC 19

FD ALUM MON
LEANING IN
WIDDOT MON. BOX



S.T.H. 11

REC 1/2 X 24 REROD 15'
DEEP WITH MAGNET

REC 1/2 X 24 REROD 18'
DEEP WITH MAGNET

OBSERVATION SHEET STA 562

FIELD BOOK _____ PAGE # _____ SHEET _____ OF _____

SHOW A PLAN VIEW DRAWING DEPICTING THE CORNER MONUMENT AND SURROUNDING PHYSICAL FEATURES, INCLUDING THE EXCAVATION AREA AND DEPTH.

PLANNING & ZONING COMMITTEE ADOPTED THE ABOVE FORM ON 12/2/1982

CORNER CODE N-3(2)

(B) Describe any record evidence, monument evidence, occupational evidence, testimonial evidence or any other material evidence you considered, and whether the monument was found or placed.

- 1866 LOCKE VOL 1 PG 255 FOUND STUMPS OF B.T.s & OLD STAKE SET STAKE (DIST. TO W.B.T. 64.2). SHOWS A DISTANCE OF 2633.90' TO CENTER OF SEC 18.
- 1869 LEE VOL 1 PG 352 FOUND OLD STAKE AND STUMPS OF BTs. USED CORNER TO SUBDIVIDE SECTION 19
- 1934 SUNNY VOL 3 PG 264 SET 1 1/2" PIPE MONUMENT SURROUNDED IT WITH 4 STONES. 24" MAPLE BEARS N62E 57' 13.5' N OF CENTER OF CONCRETE PAVEMENT. SHOWS A DISTANCE OF 2821.4 TO THE SW COR OF SEC 18, 2620.7 TO SE COR SEC 18, 5282.7 TO FENCE & ROAD INTERSECTION AT S 1/4 COR SEC 19, AND 5270.5 TO FENCE INT AT N 1/4 COR SEC 18
- 1977 TALARCZK VOL 6 PG 367 DISTANCE OF 2818.32 TO SW COR SEC 18.
- 1984 BARNES VOL 6 PG 325 FOUND BENT GAS PIPE. SHOWS A DISTANCE OF 2623.53 TO SE CORNER SEC 18, 2818.18 TO SW CORNER OF SEC 18, AND 2632.07 TO FOUND LIMESTONE AT CENTER OF SECTION 19.
- 1987 BARNES VOL 6 PG 367 SHOWS A GRID DISTANCE BY SCHNEIDER OF 2818.14 TO SW COR SEC 18, 2623.67 TO SE COR SEC 18.
- 1987 SCHNEIDER VOL 7 PG 371 COORDINATES OF 230,089.23; 2,173,194.76 AND COORDINATES BY BARNES OF 230,089.28; 2,173,193.92
- 1987 BARNES N-3 FOUND BENT GAS PIPE. REPLACED SAME WITH POLY MONUMENT & REFERENCED CORNER. SHOWS COORDINATES OF 230,089.28; 2,173,193.92
- 1989 BARNES N-3(1) FOUND POLY. MON. AND REFERENCED SAME FOR ROAD CONSTRUCTION PROJECT.

FOUND POLY. MONUMENT LEANING INSIDE WIDOT ROUND MONUMENT BOX.

C) Was the corner restored through acceptance of (1) an obliterated evidence location, or, (2) a found perpetuated location?
ACCEPTED FOUND PERPETUATED LOCATION.

D) Describe any material discrepancy between the location of the corner as restored or reestablished and the location of that corner as previously restored or reestablished by distance and direction. Show the discrepancy on the plan view drawing under (a), above. Show the distances between the corner as previously restored or reestablished and (1) the corner as restored or reestablished, and (2) to at least 4 of the witness monuments shown on the drawing in (a), above.

(E) Was the corner reestablished through lost corner proportionate methods? If so, show the method, including the directions and distances to other public land survey corners used as evidence or used for proportioning the corner location.

I, Donald Barnes, hereby certify that the corner location as identified by the corner code index was determined by me under my direction and control and that this U.S. Public Land Survey Monument Record is correct and complete to the best of my knowledge and belief.

Donald Barnes
seal

Dec 6, 1996

Number of included sheets _____

emboss

CORNER CODE

A-E 7.08 REQUIREMENT

N3 (2)