

Paper weight-110# (minimum)

Black nonfading ink required

# U.S. PUBLIC LAND SURVEY MONUMENT RECORD

For Public Land Survey Corners In:  
T. 2 N. R. 10 E. 4th P.M.

WI ADMINISTRATIVE CODE A-E 7.08 REQUIREMENT  
REV 10/23/2004 USMONREC.DWG

### CORNER CODE INDEX

SPRING VALLEY TWP  
ROCK COUNTY WI

IF AVAILABLE  
ROCK COUNTY COORDINATES PREFERRED

A	1	2	3	4	5	6	7	8	9	10	11	12	13	14	15	16	17	18	19	20	21	22	23	24	25	A
B																										B
C																										C
D																										D
E																										E
F																										F
G																										G
H																										H
J																										J
K																										K
L																										L
M																										M
N																										N
O																										O
P																										P
Q																										Q
R																										R
S																										S
T																										T
U																										U
V																										V
W																										W
X																										X
Y																										Y
Z																										Z

North \_\_\_\_\_ Elev. \_\_\_\_\_

East \_\_\_\_\_

Hor. Datum \_\_\_\_\_ Vert. Datum \_\_\_\_\_

LATITUDE \_\_\_\_\_ ELLIPS. HT. \_\_\_\_\_

LONGITUDE \_\_\_\_\_

NAD83(91) \_\_\_\_\_ NETWORK ADJ. YR \_\_\_\_\_

GPS (X) \_\_\_\_\_ TRAVERSE (X) \_\_\_\_\_

BASED ON THE FOLLOWING CONTROL:

PLACE MONUMENT SYMBOL  AT PROPER LOCATION ON ABOVE INDEX

CORNER MONUMENT

WITNESS MONUMENT

(a)

BEARINGS ARE BASED ON: \_\_\_\_\_

FIELD BOOK \_\_\_\_\_ PAGE # \_\_\_\_\_

SHEET 1 OF 2

SHOW A PLAN VIEW DRAWING DEPICTING THE CORNER MONUMENT AND SURROUNDING PHYSICAL FEATURES, INCLUDING THE EXCAVATION AREA AND DEPTH.

PLANNING & ZONING COMMITTEE ADOPTED THIS FORM ON 12/2/1982

CORNER CODE N-23(1)

SP572

(B) Describe any record evidence, monument evidence, occupational evidence, testimonial evidence or any other material evidence you considered, and whether the monument was found or placed.

- 1856 DODGE BOOK 3 PAGE 4 SUBDIVISION "VILLAGE OF ORFORDVILLE". SHOWS CORNER BUT STATES NOTHING ABOUT IT.
- 1874 RUGER VOL 2 PG 132 FOUND CORNER ESTABLISHED BY LEE. STAKE SURROUNDED BY 4 LIMESTONES UNDER HWY CULVERT.
- 1890 BLEEDORN VOL 2 PG 433 FOUND STAKE SURROUNDED BY 4 LIMESTONES.
- 1910 KERCH VOL 3 PG 62 SHOWS MONUMENTS BUT STATES ONLY SEE TROSTEM'S ADDITION.
- 1919 BATTERMAN VOL 3 PG 79 FOUND 2" GAS PIPE. SHOWS THE ANGLE FROM THE SW CORNER TO THE N/S CENTER OF SECTION 13 AS 87©03 AND THE DISTANCE TO THE SOUTHWEST CORNER OF SECTION 13 AS 2670.42'.
- 1924 UNKNOWN VOL 3 PG 131 SHOWS A IRON PIPE.
- 1932 SUNNY VOL 3 PG 148 RESET MONUMENT WITH 1" IRON PIPE, 36" LONG, AND FLUSH WITH CONCRETE PAVEMENT. ALSO PLACED TIES.
- 1934 SUNNY VOL 3 PG 257 SET IRON PIPE MONUMENT 1.85' SOUTH OF CENTER LINE OF CONCRETE PAVEMENT. SHOWS A DISTANCE OF 246.0 TO CENTER LINE OF A STREET THAT IS NORTH OF THE CORNER. ALSO SHOWS SHORT INDIRECT TIES TO BLOCK CORNERS.
- 1934 SUNNY A©28 ASSESSORS PLAT. SHOWS CORNER BUT STATES NOTHING ABOUT IT.
- 1936 SUNNY VOL 3 PG 313 FOUND PIPE.
- 1978 KIENBAUM BOOK 29 PAGE 35 "ASSESSOR PLAT #2". SHOWS A FOUND 1" PIPE AT THE CENTER OF THE R/W OF CLARK AND BRODHEAD.
- 1979 LEE BK 30 PAGE 24. SUBDIVISION "SOUTHSIDE ESTATES FOURTH ADDITION" SHOWS A CALL DISTANCE TO THE CORNER BUT STATES NOTHING ABOUT THE CORNER.
- 1989 BARNES N-23 FOUND PK WITH 1.00 PK TIES TO THE SOUTH AND WEST. 0.2' DEEP FOUND PK INSIDE PIPE.

FD 0.1' DEEP PK IN 1" PIPE. ALSO FD REFERENCE MONUEMNTS. MON. WILL BE DESTROYED BY RD CONSTRUCTION.

C) Was the corner restored through acceptance of (1) an obliterated evidence location, or, (2) a found perpetuated location?

ACCEPTED FD PK IN PIPE.

D) Describe any material discrepancy between the location of the corner as restored or reestablished and the location of that corner as previously restored or reestablished by distance and direction. Show the discrepancy on the plan view drawing under (a), above. Show the distances between the corner as previously restored or reestablished and (1) the corner as restored or reestablished, and (2) to at least 4 of the witness monuments shown on the drawing in (a), above.

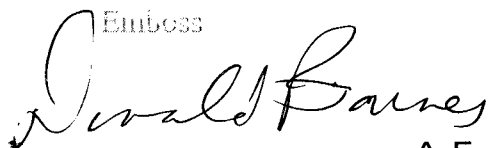
NONE

(E) Was the corner reestablished through lost corner proportionate methods? If so, show the method, including the directions and distances to other public land survey corners used as evidence or used for proportioning the corner location.

I, **Donald Barnes**, hereby certify that the corner location as identified by the corner code index was determined by me under my direction and control and that this U.S. Public Land Survey Monument Record is correct and complete to the best of my knowledge and belief.

Seal

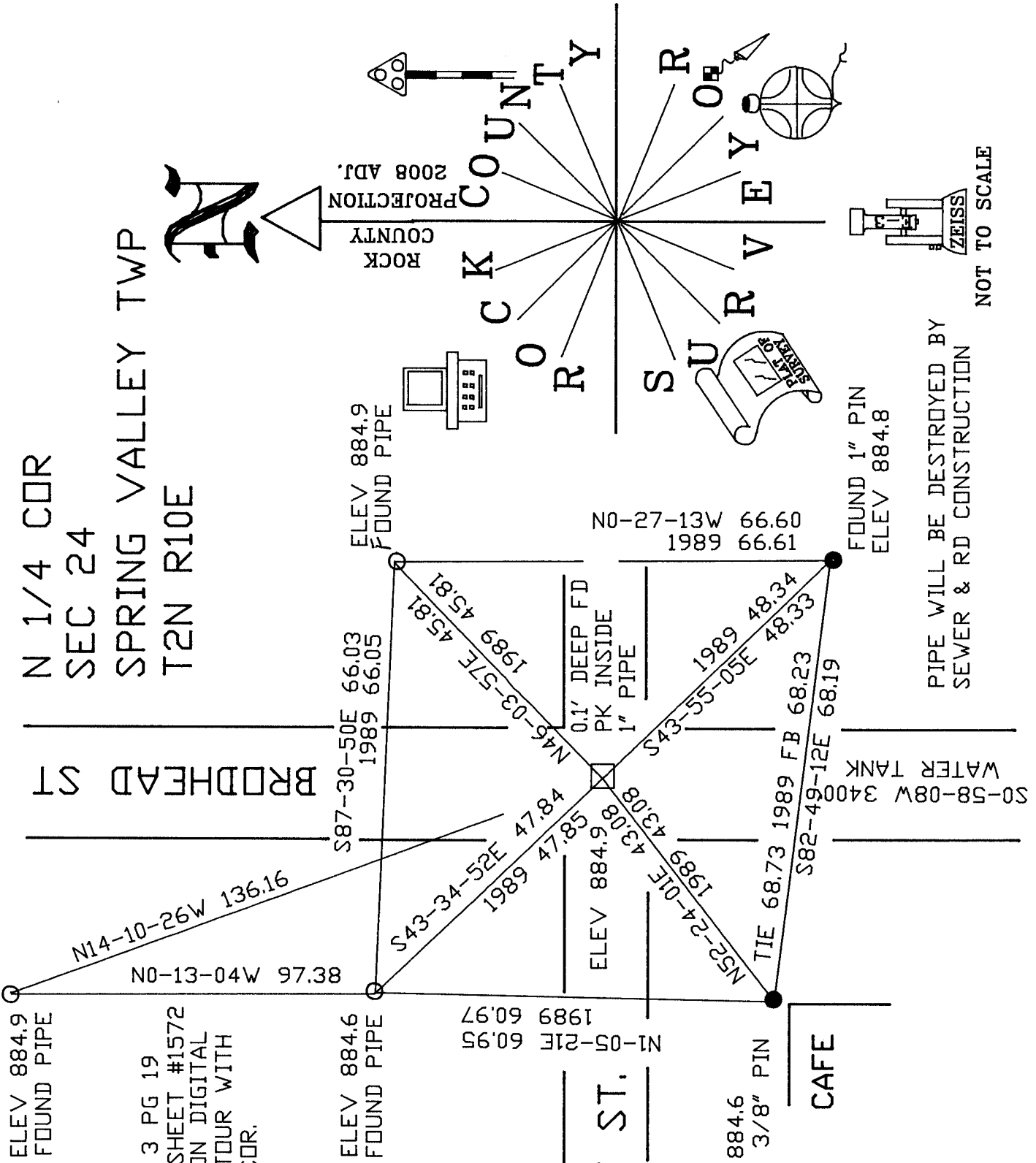
SHEET 1 OF 2

Emboss  


CORNER CODE **N-23(1)**  
A.E. 7.08 REQUIREMENT

9-25-08

N 1/4 COR  
 SEC 24  
 SPRING VALLEY TWP  
 T2N R10E



ELEV 884.9  
 FOUND PIPE

FIELD BOOK # 3 PG 19  
 OBSERVATION SHEET #1572  
 ELEV. BASED ON DIGITAL  
 2' PHOTO CONTOUR WITH  
 884.3 @ SEC COR.

ELEV 884.6  
 FOUND PIPE

N1-05-21E 60.95  
 1989 60.97

CLARK ST.

ELEV 884.6  
 FOUND 3/8" PIN

CAFE

SHEET 2 OF 2

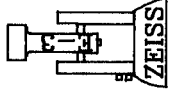
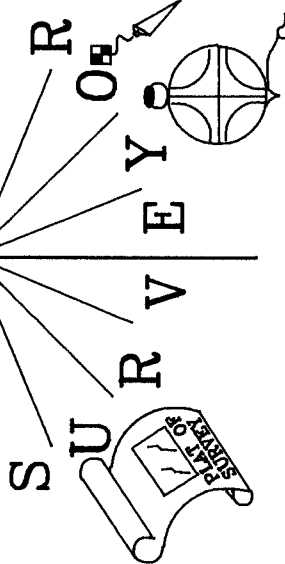
*Daryl*  
 EMBOSSED  
 SEAL  
*Daves*  
 9/25/08

N 23(1)

**N**

ROCK COUNTY  
 PROJECTION  
 2008 ADJ.

ROCK COUNTY  
 SURVEY



NOT TO SCALE

PIPE WILL BE DESTROYED BY  
 SEWER & RD CONSTRUCTION

FOUND 1" PIN  
 ELEV 884.8

S0-58-08W 3400  
 WATER TANK

N0-27-13W 66.60  
 1989 66.61

ELEV 884.9  
 FOUND PIPE

S87-30-50E 66.03  
 1989 66.05

N46-03-57E 45.81  
 1989 45.81

0.1' DEEP FD  
 PK INSIDE  
 1" PIPE

N43-55-05E 48.34  
 1989 48.33

N52-24-01E 68.23  
 1989 68.19

N14-10-26W 136.16

N0-13-04W 97.38

S43-34-52E 47.84  
 1989 47.85

ELEV 884.9  
 43.08

N52-24-01E 68.23  
 1989 68.19

S82-49-12E 68.19