

U.S. PUBLIC LAND SURVEY MONUMENT RECORD

For Public Land Survey Corners in the

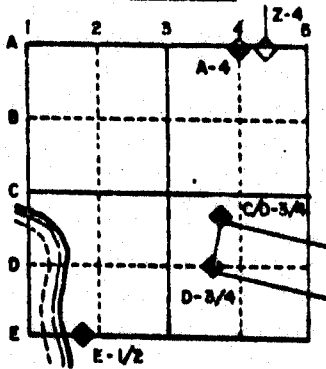
T. 2 N., R. 10 E.

CORNER CODE INDEX

	1	2	3	4	5	6	7	8	9	10	11	12	13	14	15	16	17	18	19	20	21	22	23	24	25
A																									
B	6																								
C		5																							
D			4																						
E				3																					
F					2																				
G	7																								
H		8																							
I			9																						
J				10																					
K					11																				
L	16																								
M		17																							
N			18																						
O				19																					
P					20																				
Q						21																			
R							22																		
S								23																	
T									24																
U										25															
V											26														
W												27													
X													28												
Y														29											
Z															30										
																31									
																	32								
																		33							
																			34						
																				35					
																					36				

PLACE MONUMENT SYMBOL (◆) AT PROPER LOCATION ON ABOVE INDEX

EXAMPLE



SPRING VALLEY TWP
ROCK COUNTY WI

IF AVAILABLE STATE PLANE COORDINATES

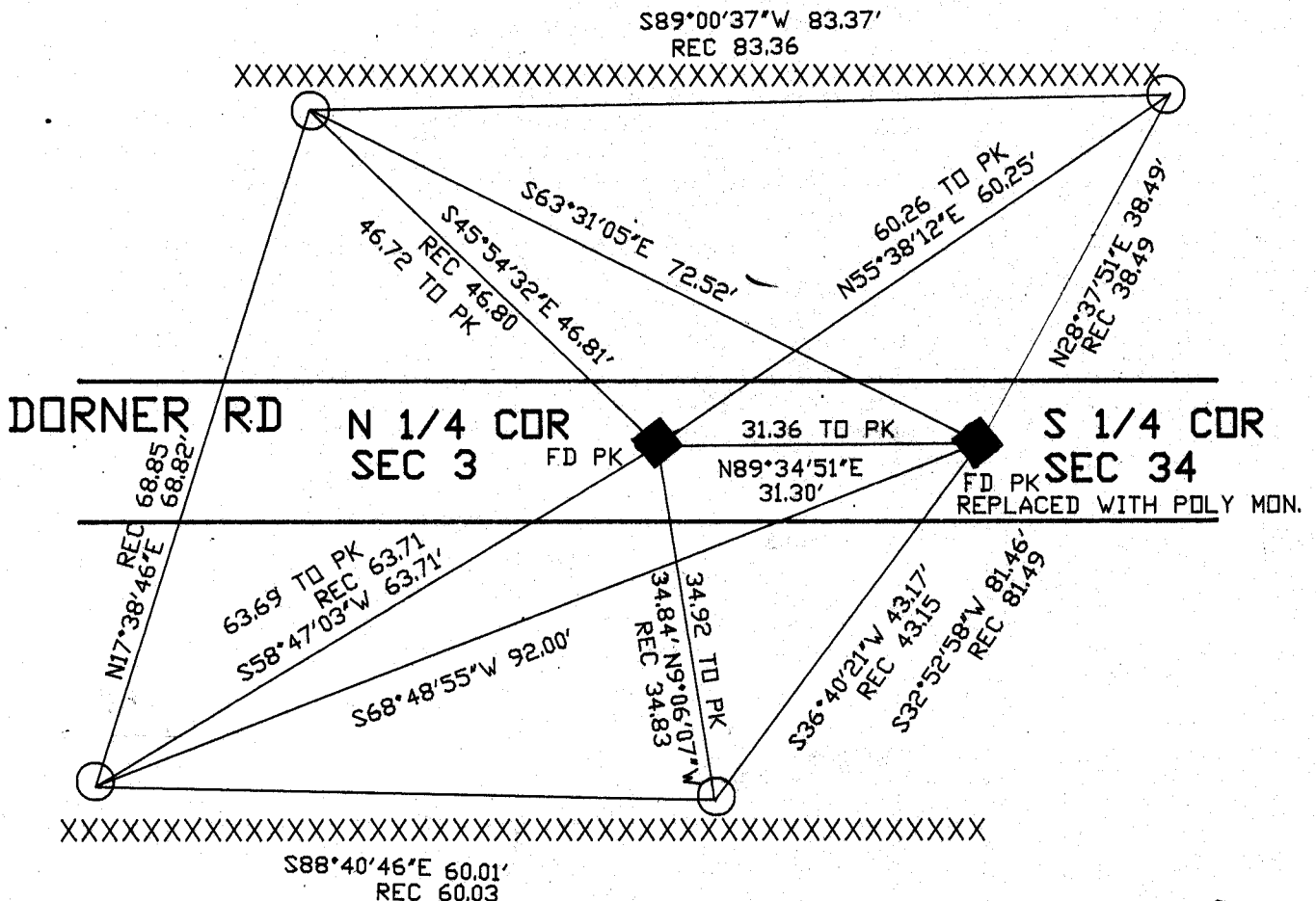
North (Y) _____ Eleve. (Z) _____
 East (X) _____ Zone _____
 Hor. Datum _____ Vert. Datum _____

a.)

◆ CORNER MONUMENT

○ WITNESS MONUMENT

BEARINGS ARE BASED ON: ASSUMED



PLACED ALUM
AT NYA 3
8/31/90
D. AB.

SPRING VALLEY FIELD BOOK #3 PG 27

○ FOUND 1' PIPE

MICROFILMED

SHEET 1 OF 1

CORNER CODE: A 15. (2)

(B) Describe any record evidence, monument evidence, occupational evidence, testimonial evidence or any other material evidence you considered, and whether the monument was found or placed.

- 1861 RUGER VOL 1 PG 150 SHOWS CORNER BUT STATES NOTHING ABOUT IT. SHOWS THAT THE CORNER IS ON A STRAIGHT LINE BETWEEN THE NE AND NW CORNERS OF SECTION 3. SHOWS THE FOLLOWING DISTANCES:
2360.82 TO CENTER OF SECTION 3
2669.04 TO NE & NW CORNERS OF SECTION 3.
- 1874 RUGER VOL 2 PG 134 SHOWS THE S 1/4 CORNER OF SECTION 34 TO THE EAST A DISTANCE OF 31.84.
- 196? BATTERMAN VOL 4 PG 213 FOUND SANDSTONE 7X6 SITTING ON END SURROUNDED BY HARDHEADS. PLACED TIES.
- 1988 BARNES VOL 6 PG 391 SHOWS RECORD DISTANCES ARE STATED ABOVE.

FOUND REFERENCE TIES PK NAILS. TERRIAN INDICATES THAT THERE WAS A ROAD CUT. THE S 1/4 CORNER OF SECTION 34 IS 31.30 TO THE EAST.

C) Was the corner restored through acceptance of (1) an obliterated evidence location, or, (2) a found perpetuated location?

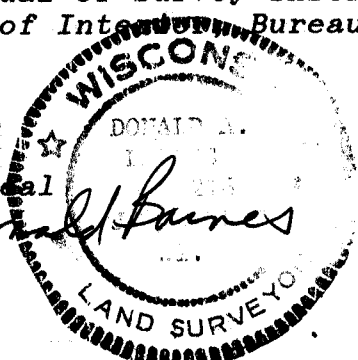
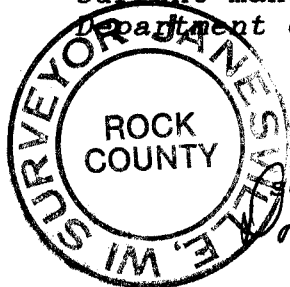
FOUND PK NAIL BUT DID NOT ACCEPT IT. USED RECORD TIES TO DETERMINE THE POSITION OF THE CORNER.

D) Describe any material discrepancy between the location of the corner as restored or reestablished and the location of that corner as previously restored or reestablished by distance and direction. Show the discrepancy on the plan view drawing under (a), above. Show the distances between the corner as previously restored or reestablished and (1) the corner as restored or reestablished, and (2) to at least 4 of the witness monuments shown on the drawing in (a), above.

PK NAIL WAS NOT IN HARMONY WITH RECORD TIES.

(E) Was the corner reestablished through lost corner proportionate methods? If so, show the method, including the directions and distances to other public land survey corners used as evidence or used for proportioning the corner location.

I, Donald Barnes, hereby certify that the corner points as identified by the corner code index were, in a field survey on, August 20, 1990, established, re-established, monumented, re-monumented, recovered or restored as expressed below and in conformance with the regulations and rules as required in the current manual of survey instructions of the United States Department of Interior, Bureau of Land Management.



COUNTY SURVEYOR FILING DATA

Date of computer entry _____

Date microfilmed _____

Number of included sheets 1051
CORNER CODE

AFFIX YOUR LAND SURVEYOR SEAL

A 15 (2)