

U.S. PUBLIC LAND SURVEY MONUMENT RECORD

For Public Land Survey Corners in:

WI ADMINISTRATIVE CODE A-E 7.08 REQUIREMENT

T. 2 N., R. 10 E

CORNER CODE INDEX

A	1	2	3	4	5	6	7	8	9	10	11	12	13	14	15	16	17	18	19	20	21	22	23	24	25
B																									
C	6																								
D		5																							
E			4																						
F				3																					
G					2																				
H						1																			
I		7																							
J			8																						
K				9																					
L					10																				
M						11																			
N							12																		
O								13																	
P									14																
Q										15															
R											16														
S												17													
T													18												
U														19											
V															20										
W																21									
X																	22								
Y																		23							
Z																			24						

SPRING VALLEY TWP
ROCK COUNTY WI

IF AVAILABLE

ROCK COUNTY COORDINATES PERFERRED

North _____ Elev. _____

East _____

Hor. Datum _____ Vert. Datum _____

LATITUDE _____ ELLIPS. HT. _____

LONGITUDE _____

GPS (X) _____ TRAVERSE (X) _____

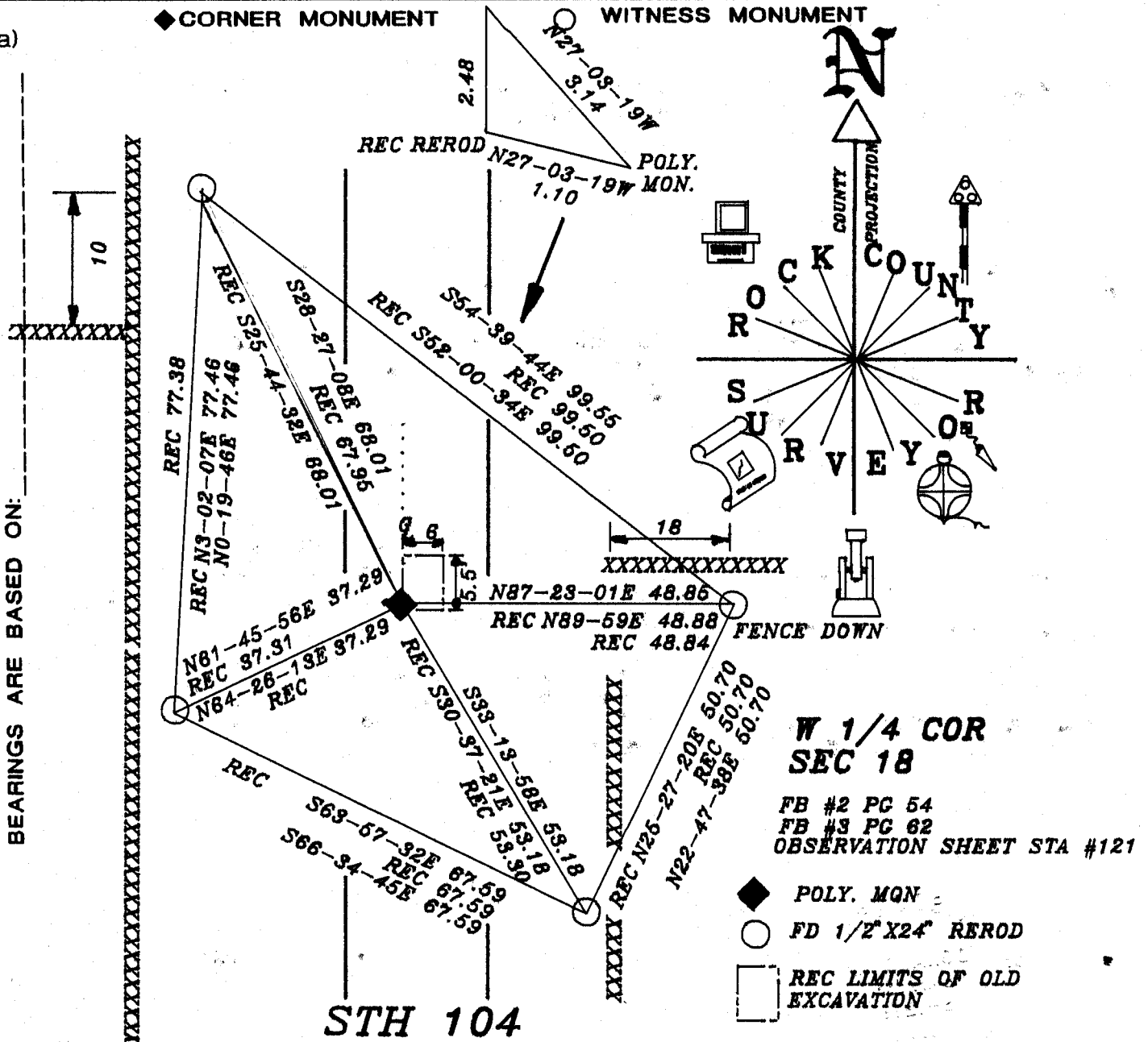
BASED ON THE FOLLOWING CONTROL:

PLACE MONUMENT SYMBOL **◆** AT PROPER LOCATION ON ABOVE INDEX

REC R/R

(a)

◆ CORNER MONUMENT **○** WITNESS MONUMENT



**W 1/4 COR
SEC 18**

FB #2 PG 54
FB #3 PG 62
OBSERVATION SHEET STA #121

- ◆** POLY. MON
- FD 1/2" X 24" REROD
- REC LIMITS OF OLD EXCAVATION

FIELD BOOK _____ PAGE # _____

SHEET _____ OF _____

SHOW A PLAN VIEW DRAWING DEPICTING THE CORNER MONUMENT AND SURROUNDING PHYSICAL FEATURES, INCLUDING THE EXCAVATION AREA AND DEPTH.

PLANNING & ZONING COMMITTEE ADOPTED THE ABOVE FORM ON 12/2/1982

CORNER CODE L-1 (2)

SP554

(B) Describe any record evidence, monument evidence, occupational evidence, testimonial evidence or any other material evidence you considered, and whether the monument was found or placed.

- 1866 LOCKE VOL 1 PG 256 PLACED A STAKE WITH LIMESTONE ON N & S AND SMALLER LIMESTONES ON E & W. MAP SHOWS THAT THE CORNER IS ON LINE WITH THE NW AND SW CORNERS AT MID POINT.
- 1934 SUNNY VOL 3 PG 254 SHOWS A DISTANCE FROM THE SW CORNER TO THE E/W FENCE NEAR THIS CORNER.
- 1977 TALARCZYK (PLAT OF SURVEY) PLACED R/R SPIKE ON TOWN LINE IN LINE WITH FENCE TO THE EAST. MAP SHOWS THAT THE TOWN LINE WAS THE LINE BETWEEN THE NE CORNER OF SECTION 24 GREEN COUNTY AND THE SW CORNER OF SECTION 18.
- 1987 BARNES L-1 FOUND R/R SPIKE, 1/4"X4" REROD, & LIMESTONES OF RECORD. ACCEPTED FOUND LIMESTONES, PLACED POLY. MONUMENT, AND REFERENCED FOUND MONUMENTS.
- 19?? WIDOT STH 11 PROJECT. SHOWS NAD 27 COORDINATES OF N/S 232,683.61; E/W 2,170,345.24
- 1996 BARNES L-1(1) FOUND POLY. MONUMENT. MONUMENT WILL BE DISTURBED BY PAVING PROJECT. REFERENCED SAME.

FOUND REFERENCE MONUMENTS.

C) Was the corner restored through acceptance of (1) an obliterated evidence location, or, (2) a found perpetuated location?

YES

D) Describe any material discrepancy between the location of the corner as restored or reestablished and the location of that corner as previously restored or reestablished by distance and direction. Show the discrepancy on the plan view drawing under (a), above. Show the distances between the corner as previously restored or reestablished and (1) the corner as restored or reestablished, and (2) to at least 4 of the witness monuments shown on the drawing in (a), above.

(E) Was the corner reestablished through lost corner proportionate methods? If so, show the method, including the directions and distances to other public land survey corners used as evidence or used for proportioning the corner location.

I, Donald Barnes, hereby certify that the corner location as identified by the corner code index was determined by me under my direction and control and that this U.S. Public Land Survey Monument Record is correct and complete to the best of my knowledge and belief.

Donald Barnes
Dec 6, 1996

Number of included sheets _____

emboss

CORNER CODE

A-E 7.08 REQUIREMENT

L-1 (2)