

# U.S. PUBLIC LAND SURVEY MONUMENT RECORD

For Public Land Survey Corners in:

WI ADMINISTRATIVE CODE A-E 7.08 REQUIREMENT

T. 2 N., R. 9 E

### CORNER CODE INDEX

	1	2	3	4	5	6	7	8	9	10	11	12	13	14	15	16	17	18	19	20	21	22	23	24	25
A																									
B																									
C																									
D																									
E																									
F																									
G																									
H																									
I																									
J																									
K																									
L																									
M																									
N																									
O																									
P																									
Q																									
R																									
S																									
T																									
U																									
V																									
W																									
X																									
Y																									
Z																									

Decatur TWP

**ROCK COUNTY WI**  
Green

IF AVAILABLE

ROCK COUNTY COORDINATES PREFERRED

North \_\_\_\_\_ Elev. \_\_\_\_\_

East \_\_\_\_\_

Hor. Datum \_\_\_\_\_ Vert. Datum \_\_\_\_\_

LATITUDE \_\_\_\_\_ ELLIPS. HT. \_\_\_\_\_

LONGITUDE \_\_\_\_\_

GPS (X) \_\_\_\_\_ TRAVERSE (X) \_\_\_\_\_

BASED ON THE FOLLOWING CONTROL:

PLACE MONUMENT SYMBOL  AT PROPER LOCATION ON ABOVE INDEX

CORNER MONUMENT

WITNESS MONUMENT

(a)

KHADER ABU AL-EIS WITH THE WISCONSIN DEPARTMENT OF TRANSPORTATION WAS THE PROJECT ENGINEER FOR THE STH 104 PROJECT. HE REVISED EXISTING TIE SHEETS OF GREEN COUNTY'S PLSS CORNERS AND SENT THEM TO THE ROCK COUNTY SURVEYOR. THE REVISED SHEET IS TAPED TO THE BACK SIDE.

AUGUST 13, 1996

DONALD BARNES, ROCK COUNTY SURVEYOR

BEARINGS ARE BASED ON:

FIELD BOOK \_\_\_\_\_ PAGE # \_\_\_\_\_

SHEET \_\_\_\_\_ OF \_\_\_\_\_

SHOW A PLAN VIEW DRAWING DEPICTING THE CORNER MONUMENT AND SURROUNDING PHYSICAL FEATURES, INCLUDING THE EXCAVATION AREA AND DEPTH.

PLANNING & ZONING COMMITTEE ADOPTED THE ABOVE FORM ON 12/2/1982

CORNER CODE J-001(2)

Filed: Spring Valley Twsp., Rock County

# SECTION CORNER TIES

TO THE SOUTHEAST CORNER OF SECTION 13, TOWN 2 NORTH, RANGE 9 EAST,  
GREEN COUNTY, WISCONSIN.

NOTE: TOP OF MONUMENT AT GRADE.

## LEGEND

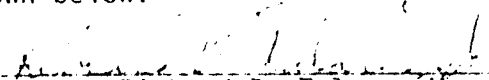
 CAST ALUMINUM MONUMENT

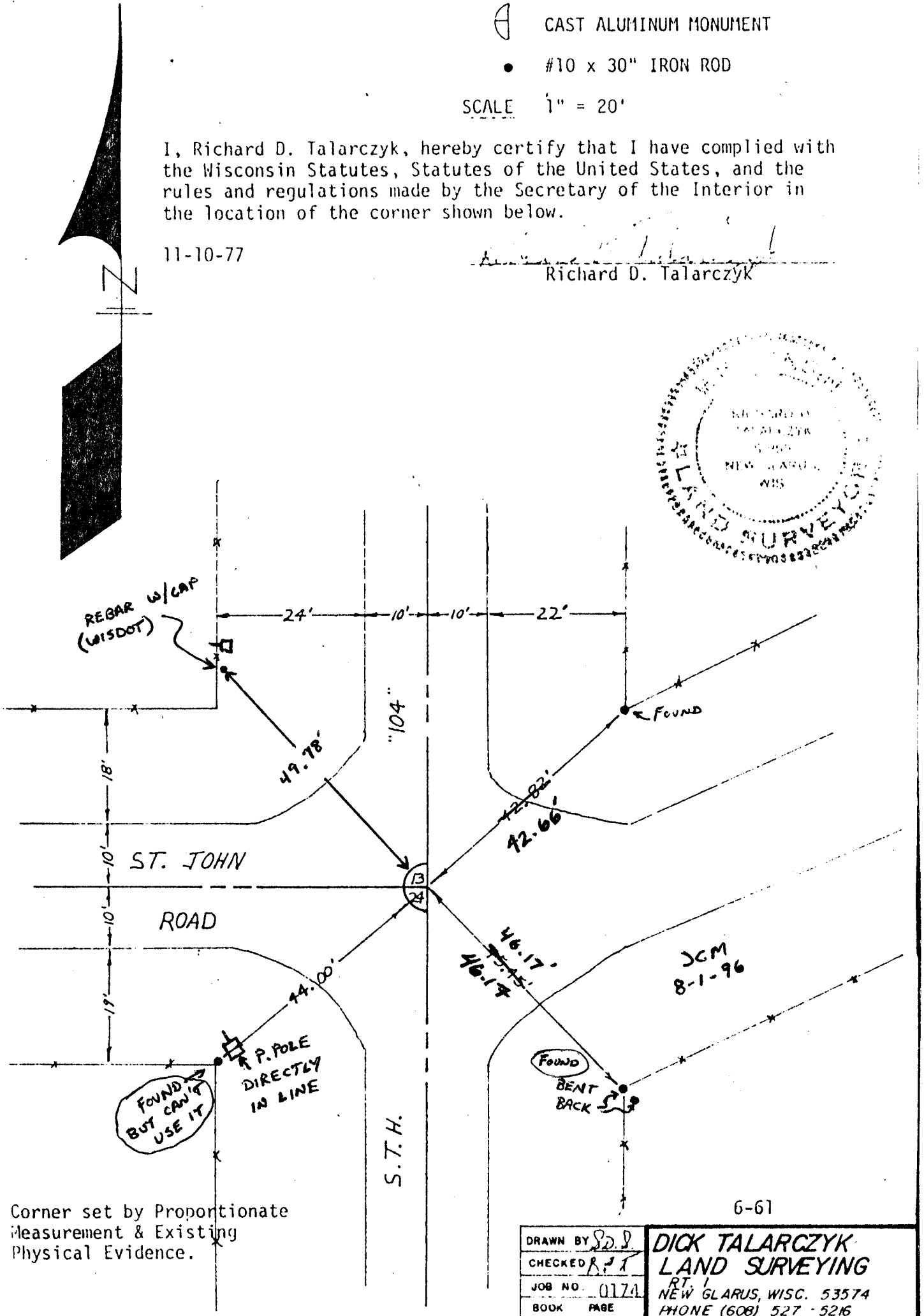
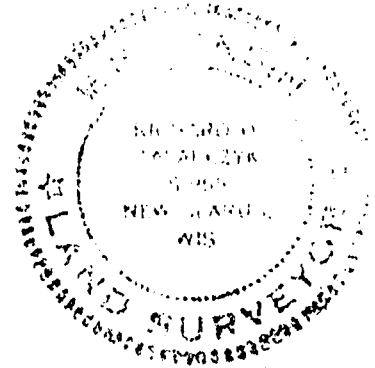
• #10 x 30" IRON ROD

SCALE 1" = 20'

I, Richard D. Talarczyk, hereby certify that I have complied with the Wisconsin Statutes, Statutes of the United States, and the rules and regulations made by the Secretary of the Interior in the location of the corner shown below.

11-10-77

  
Richard D. Talarczyk



Corner set by Proportionate  
Measurement & Existing  
Physical Evidence.

DRAWN BY <i>S.D.J.</i>	<b>DICK TALARCZYK</b> <b>LAND SURVEYING</b> RT. 1 NEW GLARUS, WISC. 53574 PHONE (608) 527-5216
CHECKED <i>R.P.T.</i>	
JOB NO. 0174	
BOOK PAGE	
6-61	

J-001(2)