

# U.S. PUBLIC LAND SURVEY MONUMENT RECORD

For Public Land Survey Corners in:

WI ADMINISTRATIVE CODE A-E 7.08 REQUIREMENT

T. 2 N., R. 10 E

### CORNER CODE INDEX

A	1	2	3	4	5	6	7	8	9	10	11	12	13	14	15	16	17	18	19	20	21	22	23	24	25
B	6				5					4				3							2				1
C																									
D																									
E																									
F																									
G	1				8				9				10					11			12				
H																									
I																									
J																									
K																									
L	18				17				16				15				14				13				
M																									
N																									
O																									
P	19				20				21				22				23				24				
Q																									
R																									
S																									
T	30				29				28				27				26				25				
U																									
V																									
W																									
X	31				32				33				34				35				36				
Y																									
Z																									

SPRING VALLEY TWP  
ROCK COUNTY WI

IF AVAILABLE  
ROCK COUNTY COORDINATES PREFERRED

North \_\_\_\_\_ Elev. \_\_\_\_\_

East \_\_\_\_\_

Hor. Datum \_\_\_\_\_ Vert. Datum \_\_\_\_\_

LATITUDE \_\_\_\_\_ ELLIPS. HT. \_\_\_\_\_

LONGITUDE \_\_\_\_\_

GPS (X) \_\_\_\_\_ TRAVERSE (X) \_\_\_\_\_

BASED ON THE FOLLOWING CONTROL:

PLACE MONUMENT SYMBOL  AT PROPER LOCATION ON ABOVE INDEX

CORNER MONUMENT       WITNESS MONUMENT

(a)

BEARINGS ARE BASED ON:

FIELD BOOK \_\_\_\_\_ PAGE # \_\_\_\_\_

SHEET 1 OF 2

SHOW A PLAN VIEW DRAWING DEPICTING THE CORNER MONUMENT AND SURROUNDING PHYSICAL FEATURES, INCLUDING THE EXCAVATION AREA AND DEPTH.

PLANNING & ZONING COMMITTEE ADOPTED THE ABOVE FORM ON 12/2/1982

CORNER CODE N-1(2)

sp561

(B) Describe any record evidence, monument evidence, occupational evidence, testimonial evidence or any other material evidence you considered, and whether the monument was found or placed.

- 1866 LOCKE VOL 1 PG 255 FOUND W.B.T. SET STAKE & SURROUNDED IT BY 3 LIMESTONES. SHOWS A DISTANCE OF 2635.51 TO W 1/4 COR SEC 18. HE PLACED THE W 1/4 COR OF SEC 18 ON LINE BETWEEN THE NW & SW CORNERS OF SECTION 18.
- 1934 SUNNY VOL 3 PG 264 SET 1 1/4" PIPE BY PROPORTIONATE MEASUREMENT. SURROUNDED IT WITH 4 HHS 12" ELM BEARS N26E 48.8. MONUMENT 32.5 N OF CENTER OF PAVEMENT. SHOWS A DISTANCE OF 2638.2 TO FENCE LINE AT W 1/4 CORNER OF SECTION 18, 2821.4 TO PIPE AT S 1/4 CORNER OF SECTION 18, AND 5249.9 TO CENTER OF ROAD INTERSECTION AT SW CORNER OF SEC 19.
- 1960 BATTERMAN VOL 4 PG 45 FOUND PIPE. PIPE IS 32.5 NORTH OF CENTER OF PVMT. REFERENCED PIPE.
- 1970 BATTERMAN VOL 4 PG 478 REFERENCED CORNER & SHOWS A DISTANCE OF 32.5 TO CENTER OF PVMT.
- 1976 BARNES VOL 5 PG 225 FD 2" PIPE WITH HH TO THE EAST. REFERENCED SAME.
- 1977 TALARCZYK VOL 6 PG 367 DISTANCE OF 2818.32 TO S 1/4 COR SEC 18 AND 2640.62 TO W 1/4 COR SEC 18.
- 1984 BARNES VOL 6 PG 325 FD 2 PIPE. SHOWS A DISTANCE OF 2818.28 TO N 1/4 COR SEC 19 AND 2625.91 TO W 1/4 COR OF SEC 19. SHOWS COORDINATES OF 230,043.39;2,170,376.30
- 1987 BARNES VOL 6 PG 367 SHOWS A DISTANCE OF 2637.87 TO W 1/4 COR SEC 18 AND 2818.28 TO S 1/4 COR SEC 18
- 1987 SCHNEIDER VOL 6 PG 371 SHOWS COORDINATES OF 230,011.03;2,170,377.47
- 1987 D.O.T. R/W PLAT 1" PIPE WITH COORDINATES OF 230,043.33;2,170,377.04.

FOUND DOT DISK IN CONCRETE IN ROUND MONUMENT BOX.

C) Was the corner restored through acceptance of (1) an obliterated evidence location, or, (2) a found perpetuated location?  
CORNER RESTORED THROUGH ACCEPTANCE OF FOUND REFERENCE MONUMENTS.

D) Describe any material discrepancy between the location of the corner as restored or reestablished and the location of that corner as previously restored or reestablished by distance and direction. Show the discrepancy on the plan view drawing under (a), above. Show the distances between the corner as previously restored or reestablished and (1) the corner as restored or reestablished, and (2) to at least 4 of the witness monuments shown on the drawing in (a), above.  
SEE MAP

(E) Was the corner reestablished through lost corner proportionate methods? If so, show the method, including the directions and distances to other public land survey corners used as evidence or used for proportioning the corner location.

I, Donald Barnes, hereby certify that the corner location as identified by the corner code index was determined by me under my direction and control and that this U.S. Public Land Survey Monument Record is correct and complete to the best of my knowledge and belief.

*Donald Barnes*  
seal

*Dec 6, 1996*

Number of included sheets \_\_\_\_\_

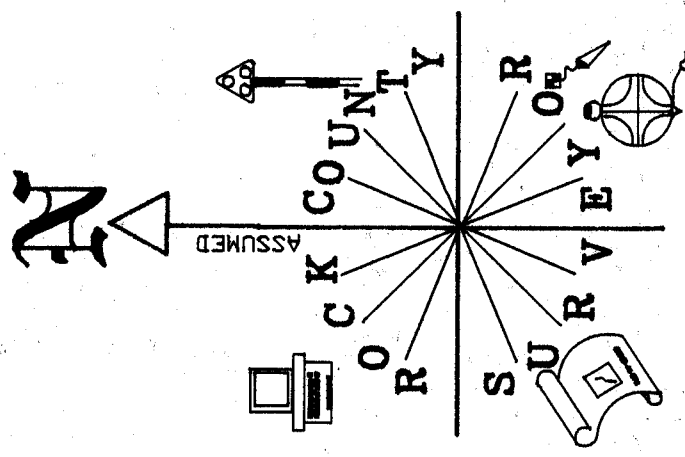
emboss

CORNER CODE

A-E 7.08 REQUIREMENT

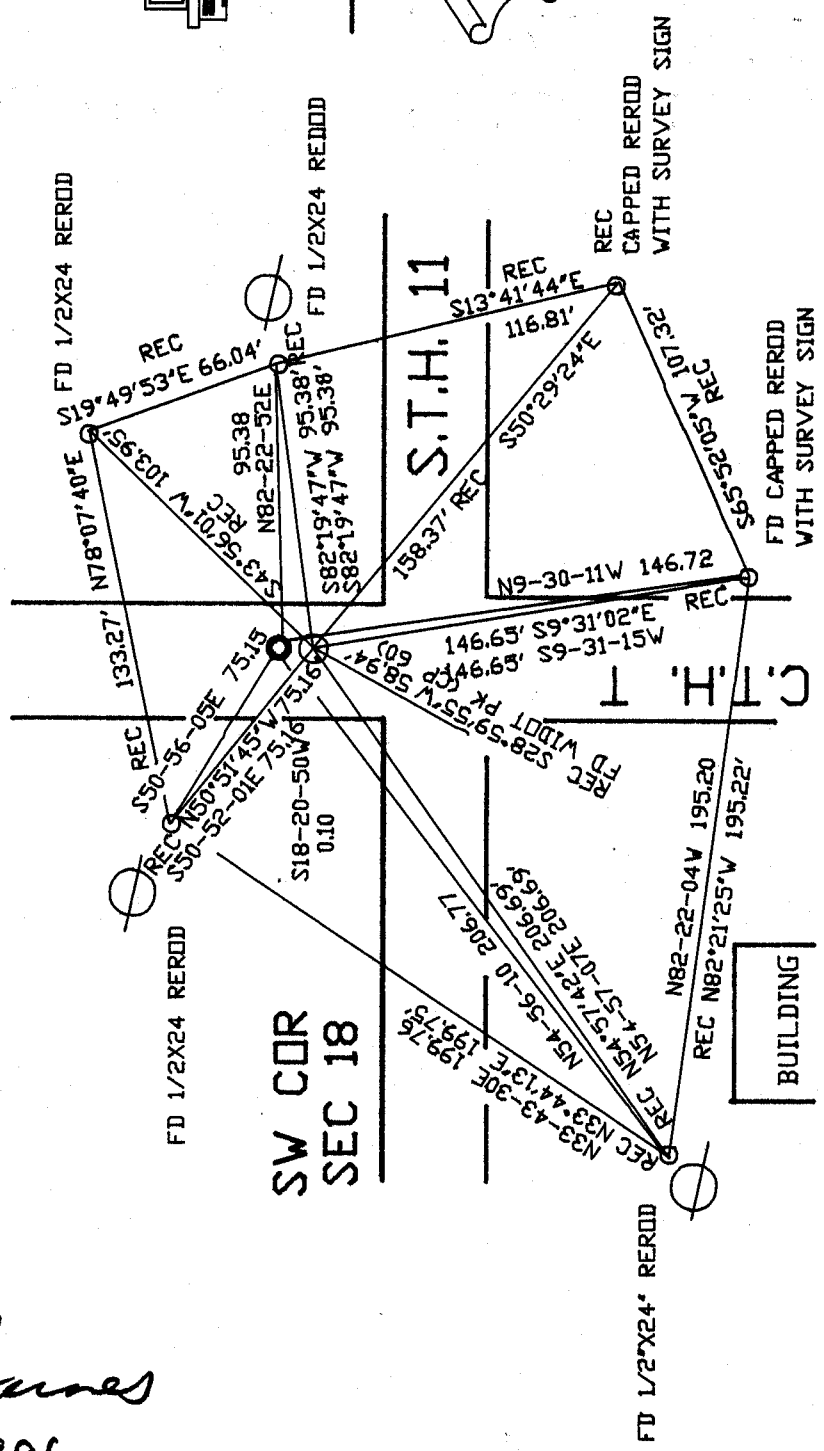
*N-1(2)*

Donald Barnes  
Dec 6, 1996



OBSERVATION SHEET STA 2561

- REC WAS A 2" PIPE 0.8' DEEP WITH PK 1.00 TO SOUTH & PK 1.00 TO WEST. POSITION IS PERPETUATED AS LOCATION.
- FD ROUND WIDOT MON. BOX WITH DISK INSIDE.
- FD 1/2" x 24" REROD



N-1(K2)