

Paper weight-110# (minimum)

Black nonfading ink required

U.S. PUBLIC LAND SURVEY MONUMENT RECORD

For Public Land Survey Corners In:

WI ADMINISTRATIVE CODE A-E 7.08 REQUIREMENT

T. 4 N. R. 11 E. 4th P.M.

REV 10/23/2004

USMONREC.DWG

CORNER CODE INDEX

PORTER TWP

ROCK COUNTY WI

IF AVAILABLE

ROCK COUNTY COORDINATES PREFERRED

A	1	2	3	4	5	6	7	8	9	10	11	12	13	14	15	16	17	18	19	20	21	22	23	24	25	A
B																										B
C																										C
D																										D
E																										E
F																										F
G																										G
H																										H
J																										J
K																										K
L																										L
M																										M
N																										N
O																										O
P																										P
Q																										Q
R																										R
S																										S
T																										T
U																										U
V																										V
W																										W
X																										X
Y																										Y
Z																										Z

North _____ Elev. _____

East _____

Hor. Datum _____ Vert. Datum _____

LATITUDE _____ ELLIPS. HT. _____

LONGITUDE _____

NAD83(91) _____ NETWORK ADJ. YR _____

GPS (X) _____ TRAVERSE (X) _____

BASED ON THE FOLLOWING CONTROL:

PLACE MONUMENT SYMBOL AT PROPER LOCATION ON ABOVE INDEX

CORNER MONUMENT

WITNESS MONUMENT

(a)

BEARINGS ARE BASED ON: -----

FIELD BOOK _____ PAGE # _____

SHEET 1 OF 3

SHOW A PLAN VIEW DRAWING DEPICTING THE CORNER MONUMENT AND SURROUNDING PHYSICAL FEATURES, INCLUDING THE EXCAVATION AREA AND DEPTH.

PLANNING & ZONING COMMITTEE ADOPTED THIS FORM ON 12/2/1982

CORNER CODE P-13(1)

PO577 E1/4CORSEC21

(B) Describe any record evidence, monument evidence, occupational evidence, testimonial evidence or any other material evidence you considered, and whether the monument was found or placed.

- 1833 HARRISON (NOV) T4N R11E 4TH MER. NORTH
BET. &
- 1833 HARRISON (NOV) T4N R11E 4TH MER. NORTH
BET. 21 & 22
- 2640.00 SET QUART4ER SEC COR. BURR OAK 10
S63E 52.14'; BURR OAK 8 N40W 16.50'
BURR OAK 10; BURR OAK 8}MARKED
- 4521.0 LEAVE TIMBER & ENTER PRAIRIE
- 5190.9 ROAD E & W
- 5280.0 SET COR TO SECS 15,16,21,,22
SET A POST & RAISED MOUND OF EARTH
& SOD
LAND 1ST 3/4 ROLLING 2ND RATE WITH BURR
& WHITE OAK TIMBER LAST 1/4 ROLLING
PRAIRIE
- 1851 STEBBINS PORTER TWP ROAD REC BK#1 PG 4 BEGINNING
AT A POINT ON THE HIGHWAY LEADING WEST FROM VAN
PATTENS BRIDGE ACROSS SEC 10 & 8(9?), WHERE THE LINE
WHICH DIVIDES THE NW 1/4 OF THE SEC 10 RUNNING
NORTH AND SOUTH INTERSECTS SAID HIGHWAY; THENCE
SOUTH ON SAID LINE 11,503.14' TO THE 1/4 LINE RUNNING
EAST & WEST, THROUGH SEC 22 T4NR11E AND THE WHOLE
LENGTH OF THE RD IS 11,501.82'. COURSES GIVEN
ACCORDING TO THE TRUE MERIDIAN. VARIATION OF NEEDLE
7 3/4 HARRISON STEBBINS, SURVEYOR
- 1864 LOCKE VOL 1 PG 213 & #3611 FD N.B.T AND STAKE SET HH
20X11-1/2X 5 ON SOUTH AND HH 15X13X7 1/2 ON NORTH
AND SMALL HH ON E. VAR 7-50 1328.74 TO STAKE WITH HH
24X13X7 1/4 @ S 1/16TH COR OF NE 1/4 SEC 21, 2657.49
TO CENTER OF SEC 21, & 5314.98 TO W 1/4 COR SEC 21
- 1878 RUGER VOL 2 PG 241 FD COR SET BY LOCKE. DROVE NEW
STAKE IN PLACE OF OLD ONE & SURROUNDED IT BY 4 HH.
USED TO SUBDIVIDE SEC 22
- 1963 BATTERMAN VOL 4 PG 166 FD HH COR AS DESCRIBED BY
RUGER. REFERENCED SAME.
- 1970 WIDOT CTH M #7437 STATES NOTHING ABOUT MON.
ESTABLISHED FROM REFERENCES. SHEET 4.12.
REFERENCED CORNER ON SHEET. SAME TIES AS IN VOL 4
PG 166.
- 1975 COMBS CSM VOL PG 343 FD REF. PIPES
- 1976 COMBS CSM VOL 5 PG 343 FD REF. PIPES EAST TO FD
STONE @ CENTER OF SEC 22
- 1982 BARNES FB # 2 PG 39 FD R/R SPIKE . FD THE EAST 1963
REFERENCE TIES. REPLACED WITH PVC MON. REFERENCED
SAME. NORTH OF FIELD ENT TO THE EAST. 2' EAST OF THE
PVMT CENTER. ON LINE E/W FENCE TO THE EAST.
- 1982 BARNES P-13 FD R/R SPIKE & ONLY 1 OF THE 1963
REFERENCE TIES. REPLACED WITH PVC MON. 2' EAST OF
CENTER OF PVMT. & ON LINE WITH E/W FENCE LINE.
REFERENCED SAME.
- 1984 BRANDT #14082 FD ALUM. MON SOUTH 996.81 TO POB OF
SURVEY.
- 2000 KARNS #7606 FD ROCK COUNTY SEC COR, S00-15-46E
2662.14 TO FD ROCK COUNTY SEC COR @ SE COR SEC 21.
- 2002 KARNS GSM VOL 25 PG 225 STATES NOTHING ABOUT MON.
2661.08 TO SE COR SEC 21, NO-22-14W 1095.40 TO PIPE
ON SECTION LINE.

Daniel Barnes
3/23/09

SHEET 1 OF 3
CORNER CODE P-13(1)

PO577 E1/4CORSEC21

FD REFERENCE TIES. PVC MON IS UNDER PVMT.

C) Was the corner restored through acceptance of (1) an obliterated evidence location, or, (2) a found perpetuated location?

ACCEPTED HH FD BY BATTERMAN AS PERPETUATED BY PVC MON.
DISTANCES AND ANGLES ARE IN HARMONY WITH RECORDS.

D) Describe any material discrepancy between the location of the corner as restored or reestablished and the location of that corner as previously restored or reestablished by distance and direction. Show the discrepancy on the plan view drawing under (a), above. Show the distances between the corner as previously restored or reestablished and (1) the corner as restored or reestablished, and (2) to at least 4 of the witness monuments shown on the drawing in (a), above.

(E) Was the corner reestablished through lost corner proportionate methods? If so, show the method, including the directions and distances to other public land survey corners used as evidence or used for proportioning the corner location.

NO

I, **Donald Barnes**, hereby certify that the corner location as identified by the corner code index was determined by me under my direction and control and that this U.S. Public Land Survey Monument Record is correct and complete to the best of my knowledge and belief.

Donald Barnes
Seal

SHEET 2 OF 3

Emboss
3/23/09

CORNER CODE **P-13(1)**

A.E. 7.08 REQUIREMENT

DID NOT SEARCH

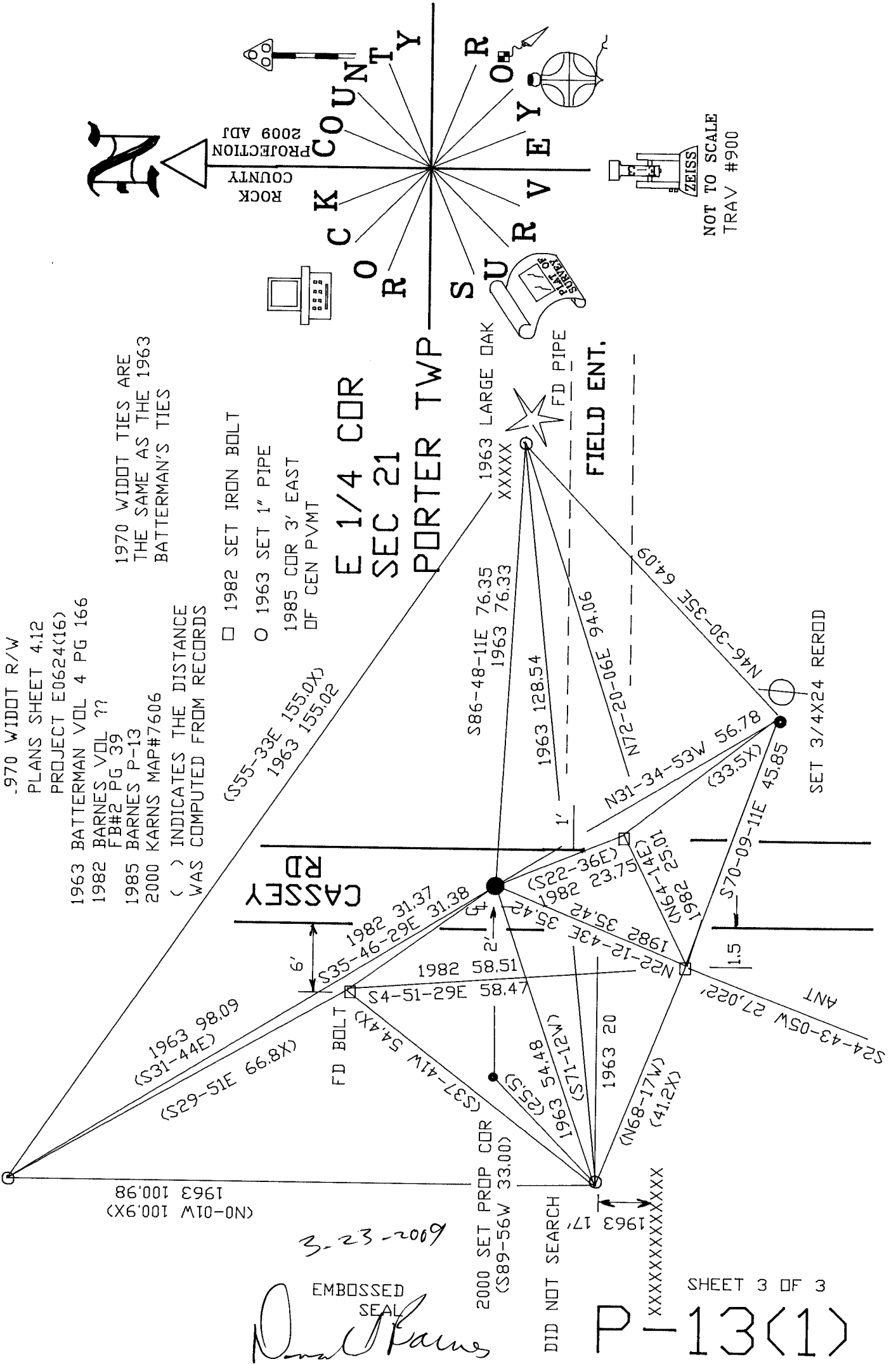
.970 WIDDOT R/W
PLANS SHEET 4.12
PROJECT E0624(16)
1963 BATTERMAN VOL 4 PG 166
1982 BARNES VOL ??
FB#2 PG 39
1985 BARNES P-13
2000 KARN'S MAP#7606

1970 WIDDOT TIES ARE
THE SAME AS THE 1963
BATTERMAN'S TIES

() INDICATES THE DISTANCE
WAS COMPUTED FROM RECORDS

- 1982 SET IRON BOLT
- 1963 SET 1" PIPE
- 1985 COR 3' EAST OF GEN PVMT

E 1/4 COR SEC 21 PORTER TWP



(N0-01W 100.98)
1963 100.98

3-23-2009

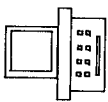
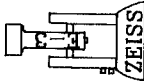
EMBOSSED SEAL
Donald Karns

2000 SET PROP COR
(S89-56W 33.00)

DID NOT SEARCH

XXXXXXXXXXXXXXX

NOT TO SCALE
TRAV #900



ROCK COUNTY SURVEY