

Paper weight-110# (minimum)

Black nonfading ink required

# U.S. PUBLIC LAND SURVEY MONUMENT RECORD

For Public Land Survey Corners In:  
T. 4 N. R. 11 E. 4th P.M.  
CORNER CODE INDEX

WI ADMINISTRATIVE CODE A-E 7.08 REQUIREMENT  
REV 10/23/2004 USMONREC.DWG

**PORTER** TWP  
**ROCK COUNTY WI**

IF AVAILABLE  
ROCK COUNTY COORDINATES PREFERRED

A	1	2	3	4	5	6	7	8	9	10	11	12	13	14	15	16	17	18	19	20	21	22	23	24	25	A
B		6			5			4			3			2			1									B
C																										C
D																										D
E																										E
F																										F
G																										G
H																										H
J																										J
K																										K
L																										L
M																										M
N																										N
O																										O
P																										P
Q																										Q
R																										R
S																										S
T																										T
U																										U
V																										V
W																										W
X																										X
Y																										Y
Z																										Z

North \_\_\_\_\_ Elev. \_\_\_\_\_

East \_\_\_\_\_

Hor. Datum \_\_\_\_\_ Vert. Datum \_\_\_\_\_

LATITUDE \_\_\_\_\_ ELLIPS. HT. \_\_\_\_\_

LONGITUDE \_\_\_\_\_

NAD83(91) \_\_\_\_\_ NETWORK ADJ. YR \_\_\_\_\_

GPS (X) \_\_\_\_\_ TRAVERSE (X) \_\_\_\_\_

BASED ON THE FOLLOWING CONTROL:  
\_\_\_\_\_

PLACE MONUMENT SYMBOL  AT PROPER LOCATION ON ABOVE INDEX

CORNER MONUMENT

WITNESS MONUMENT

BEARINGS ARE BASED ON: \_\_\_\_\_

FIELD BOOK \_\_\_\_\_ PAGE # \_\_\_\_\_

SHEET 1 OF 3

SHOW A PLAN VIEW DRAWING DEPICTING THE CORNER MONUMENT AND SURROUNDING PHYSICAL FEATURES, INCLUDING THE EXCAVATION AREA AND DEPTH.

PLANNING & ZONING COMMITTEE ADOPTED THIS FORM ON 12/2/1982

CORNER CODE V-13(1)

PO607

SECORSEC28

(B) Describe any record evidence, monument evidence, occupational evidence, testimonial evidence or any other material evidence you considered, and whether the monument was found or placed.

1833 HARRISON (NOV) T4N R11E 4TH MER. NORTH  
BET. &

1833 HARRISON (NOV) T4N R11E 4TH MER. NORTH  
BET. 33 & 34

2640.0 QUARTER SEC COR. {BURR OAK 12 SB6E  
29.04'; BURR OAK 12 NB7W 29.7' {BURR  
OAK 12; BURR OAK 12}

5280.0 SET COR TO SECS 27,28,33,34 {BURR OAK  
12 S36W 44.22'; BURR OAK 12 N71W  
63.36'; BURR OAK 10 N33E 56.76'; BUR  
OAK 12 S28E 165.0'  
LAND ROLLING 2ND RATE WITH TIMBER OF  
BURR & RED HICKORY, ??? ???? GRASS &  
WEEDS

1833 HARRISON (NOV 2ND) T4N R11E 4TH MER. EAST  
BET. 27 & 34

1337.16 TO SMALL POND OFFSET NORTH 528.0';  
EAST 990.0' {528.0' OUTLET 660.0' NORTH  
SOUTH 528.0 TO LINE

2327.16 TOWN LINE CENT- & LEAVE POND

2640.0 TEMPY 1/4 SEC COR

5293.20 INT. E BDY 5.28' SOUTH OF POST  
LAND ? SAME AS BEFORE

WEST COR. WEST BET 27 & 34

1518.66 WHITE OAK 24

2640.0 QUARTER SEC COR {BURR OAK 12 S49W  
9.9'; BURR OAK 12 N35E 17.82' {BURR  
OAK 12; BURR OAK 12} MARKED

5293.20 SEC COR

1833 HARRISON (NOV) T4N R11E 4TH MER. EAST  
BET. 28 & 33

2641.0 TEMPY 1/4 SEC COR

5280.0 INT. E BDY 5.28' NORTH OF POST  
LAND ? SAME

WEST COR. WEST BET 28 & 33

1933.14 BURR OAK 12 IN DIAM

2641.0 QUARTER SEC COR {BURR OAK 12 N28E  
27.06'; BURR OAK 18 S8E 52.80' {BURR  
OAK 12; BURR OAK 18} MARKED

5280.00 SEC COR

1833 HARRISON (NOV 3RD) T4N R11E 4TH MER. NORTH  
BET. 28 & 27

2640.0 QUARTER SEC COR. {RED OAK 10 N10W 33.0'  
BURR OAK 12 S45E 52.14' {BURR OAK 12;  
RED OAK 10} MARKED

4200.24 BURR OAK 18 IN DIAM.

5280.0 SET POST FOR COR TO SEC 21,22,27,28  
{BURR OAK 12 N14E 29.70'; BURR OAK 12  
S58W 73.26'; BURR OAK 18 N33W 96.36';  
BURR OAK 20 S68E 91.74'

LAND ? SAME

1871 RUGER VOL 2 PG 69 FD OLD STAKE & WHERE STUMPS OF  
BTS HAD BEEN DUG UP DROVE STAKE & SURROUNDED IT  
WITH 4 HARD HEAD STONES & PUT FLAT HH STONE  
12X11X6 ON TOP OF IT

1873 LEE VOL 2 PG 90 FD COR SET BY A SURVEYOR FROM  
EVANSVILLE GONE 2669.04 TO N 1/4 COR SEC 34

1963 BATTERMAN VOL 4 PG 166 DUG LARGE HOLE FD NOTHING.

1982 BARNES VOL 6 PG 277 DUG & FD 2X36 IP SURROUNDED BY  
4 HH & SMALL PIECES OF WOOD STAKE 8' BELOW THE ROAD

SHEET 1 OF 3

CORNER CODE V-13(1)

No 4 2009

D. Barnes

PO607 SECORSEC28

SURFACE. REPLACED THE 2" PIPE WITH A 1X24 PIPE & SET THE 2" IP HORIZONTALLY ON TOP (8' DEEP) & REFERENCED SAME. SHORT PK TIES: 18.00 NW & 18.00 NE.

1982 BARNES V-13 & FB#2 PG 20 & 31 TIES WITH PK 18.00 TO THE NE & NW OF COR. REFERENCED SAME. I DUG AND FOUND 8' DEEP A 2X36 IRON PIPE SURROUNDED BY 4 HARDHEAD STONES & SMALL PIECES OF A WOOD STAKE IN & UNDER THE PIPE. REPLACED PIPE WITH A 1X24 IRON PIPE & SET THE 2" PIPE HORIZONTALLY ON OF THE 1" PIPE. IN SEP I SET A POLY MON. ALL THE REFERENCE PIPES ARE ABOUT 8 FEET BELOW THE PAVEMENT. SET POLY AT ROAD SURFACE.

1982 BARNES VOL 6 PG 279 FD 2" PIPE SB9-49-48E 2662.98 TO S 1/4 COR SEC 27, NB9-30-48W 2665.84 TO S 1/4 COR SEC 28, NO0-55-57E 2654.11 TO FD 1" PIPE @ W 1/4 COR SEC 27

1983 BARNES #6841 NB9-55-38W TO POLY @ N 1/4 COR SEC 33

1989 COMBS CSM VOL 14 PG 34 ALUM. 2663.00 TO POLY @ N 1/4 COR SEC 34.

1991 COMBS CSM VOL 15 PG 133 ALUM. 2647.28 TO 3/4" PIN @ E 1/4 COR SEC 33

1992 BARNES VOL 6 PG 428 SHOW REC DISTANCES

1993 COMBS CSM VOL 16 PG 320 ALUM. 2647.28 TO 3/4 IRON ROD @ E 1/4 COR SEC 33

1999 KARNS #7289 STATES NOTHING ABOUT MON. SB9-56-05E 1331.50 TO 1/16TH COR

2000 COMBS CSM VOL 23 PG 354 STATES NOTHING ABOUT MON. 2646.67 TO E 1/4 COR SEC 33.

I USED MY 1982 OBSERVATIONS TO THE POLY MON.

C) Was the corner restored through acceptance of (1) an obliterated evidence location, or, (2) a found perpetuated location?

ACCEPTED THE POLY MON.

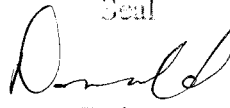
D) Describe any material discrepancy between the location of the corner as restored or reestablished and the location of that corner as previously restored or reestablished by distance and direction. Show the discrepancy on the plan view drawing under (a), above. Show the distances between the corner as previously restored or reestablished and (1) the corner as restored or reestablished, and (2) to at least 4 of the witness monuments shown on the drawing in (a), above.

NONE

(E) Was the corner reestablished through lost corner proportionate methods? If so, show the method, including the directions and distances to other public land survey corners used as evidence or used for proportioning the corner location.

NO

I, **Donald Barnes**, hereby certify that the corner location as identified by the corner code index was determined by me under my direction and control and that this U.S. Public Land Survey Monument Record is correct and complete to the best of my knowledge and belief.

Seal  


Emboss  
Barnes

Nov 4 2009

SHEET 2 OF 3

CORNER CODE

**V-13(1)**

A.E. 7.08 REQUIREMENT

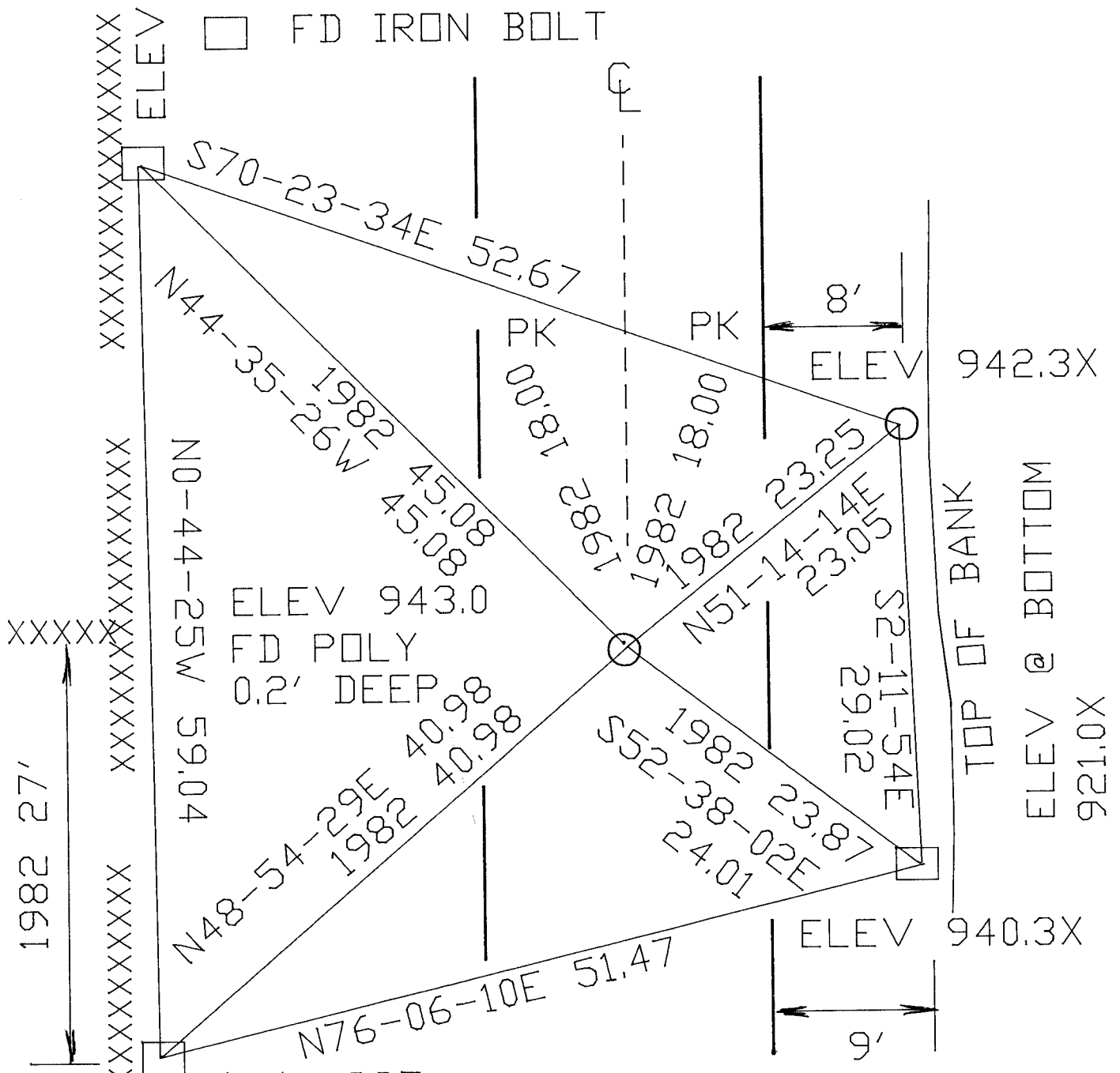
ELEV ARE BASED ON  
DIGITAL PHOTO.

NE COR  
SEC 33  
PORTER TWP  
T4N R11E

OBS. SHEET #607

1982 BARNES V-13 &  
FB#2 PG 20&31

940.7X  
1981 BARNES VOL 6 PG 166  
1971 LEE VOL 4 PG 502  
) SET 1/2X24 REROD



SEARCHED FOR PK TIES & OLD PK TRAV. SHEET 3 OF 3

V-13(1)

*Done Nov 4, 2009  
Barnes*