

Paper weight-110# (minimum)

Black nonfading ink required

U.S. PUBLIC LAND SURVEY MONUMENT RECORD

For Public Land Survey Corners In:

WI ADMINISTRATIVE CODE A-E 7.08 REQUIREMENT

T. 4 N. R. 11 E. 4th P.M.

REV 10/23/2004

USMONREC.DWG

CORNER CODE INDEX

PORTER TWP

ROCK COUNTY WI

IF AVAILABLE

ROCK COUNTY COORDINATES PREFERRED

	1	2	3	4	5	6	7	8	9	10	11	12	13	14	15	16	17	18	19	20	21	22	23	24	25		
A																											A
B																											B
C																											C
D																											D
E																											E
F																											F
G																											G
H																											H
J																											J
K																											K
L																											L
M																											M
N																											N
O																											O
P																											P
Q																											Q
R																											R
S																											S
T																											T
U																											U
V																											V
W																											W
X																											X
Y																											Y
Z																											Z
	1	2	3	4	5	6	7	8	9	10	11	12	13	14	15	16	17	18	19	20	21	22	23	24	25		

North _____ Elev. _____

East _____

Hor. Datum _____ Vert. Datum _____

LATITUDE _____ ELLIPS. HT. _____

LONGITUDE _____

NAD83(91) _____ NETWORK ADJ. YR _____

GPS (X) _____ TRAVERSE (X) _____

BASED ON THE FOLLOWING CONTROL:

PLACE MONUMENT SYMBOL AT PROPER LOCATION ON ABOVE INDEX

CORNER MONUMENT

WITNESS MONUMENT

BEARINGS ARE BASED ON: (a) -----

FIELD BOOK _____ PAGE # _____

SHEET 1 OF 3

SHOW A PLAN VIEW DRAWING DEPICTING THE CORNER MONUMENT AND SURROUNDING PHYSICAL FEATURES, INCLUDING THE EXCAVATION AREA AND DEPTH.

PLANNING & ZONING COMMITTEE ADOPTED THIS FORM ON 12/2/1982

CORNER CODE G-13(1)

PO537

E1/4CORSEC9

(B) Describe any record evidence, monument evidence, occupational evidence, testimonial evidence or any other material evidence you considered, and whether the monument was found or placed.

- 1833 HARRISON (NOV) T4N R11E 4TH MER. NORTH
 BET. 9 & 10
 2640.0 QUARTER SEC COR. SET A POST & RAISED
 MOUND OF EARTH & SOD
 3630.0 LEAVE PRAIRIE & ENTER TIMBER
 3953.40 BURR OAK 12
 5280.0 COR TO SECS 3,4,9,10 {BURR OAK 12 N50W
 30.36'; BURR OAK 16 S60W 42.24'; BURR OAK
 12 S34E 30.36'; BURR OAK 14 N55E 100.98'
 LAND 1ST 1/2 MILE ROLLING PRAIRIE 2ND 1/2
 ROLLING 2ND RATE WITH ALL BURR OAK TIMBER
- 1856 PORTER TOWN RECORDS BK 1 PAGE 8 "BEGINNING AT THE
 N.W. CORNER OF SECTION 3 & 4, 9 & 10, 120 CHAINS TO
 THE 1/4 POST ON THE WEST LINE OF SECTION 10; THENCE
 EAST ON THE E & W 1/4 LINE OF SECTION 10, 29 CHAINS TO
 A POINT UNITING WITH A ROAD RUNNING N & S ON THE ""
 "THE ABOVE DESCRIBED ROUTE IS HEREBY DECLARED TO BE
 A PUBLIC HIGHWAY FOUR ROADS WIDE".
- 1858 PORTER TOWN RECORDS PAGE 12 "THENCE NORTH ON THE
 SECTION LINE BETWEEN SECTIONS 21 & 22, 15 & 16, 9 &
 10, 181.80 CHAINS TO THE N.E. CORNER OF SECTION 9.
 ALSO BEGINNING AT THE N.E CORNER OF THE WEST 1/2 OF
 THE NW 1/4 OF SECTION 15; THENCE WEST ON THE SECTION
 LINE BETWEEN SECTIONS 10 & 15, 9 & 16, 100.00 CHAINS
 TO THE SW CORNER OF SECTION 9 AND THE ABOVE
 DESCRIBED ARE THE CENTER OF HIGHWAYS FOUR RODS
 WIDE."
- 1858 PORTER TWP RD REC BK 1 PG 12 BEGINNING AT A POINT ON
 THE SECTION LINE BETWEEN SECTIONS 21 & 22 1438.80'
 SOUTH OF THE NE COR OF SEC 21 AT THE TERMINATION OF
 A ROAD CONTINUING SOUTH AND AT THE INTERSECTION OF
 A ROAD RUNNING NORTH WESTERLY THROUGH SECTIONS 21
 & 22, THENCE NORTH ON THE SEC LINE BETWEEN SECTIONS
 21 & 22, 15 & 16, 9 & 10, 11,998.8' TO THE NE COR OF SEC
 9. ALSO BEGINNING AT THE NE COR OF THE WEST 1/2 OF
 THE NW 1/4 OF SEC 15; THENCE WEST ON THE SEC LINE
 BETWEEN SECTIONS 10 & 15, 9 & 16, 6,600' TO THE SW COR
 OF SEC 9 AND THE LINES ABOVE DESCRIBED ARE THE
 CENTER OF HIGHWAYS 66' WIDE AND WE THE SAID
 SUPERVISORS DO HEREBY DISCONTINUE THE PUBLIC
 HIGHWAY DISCRIBED AS FOLLOWS: BEGINNING AT THE SE
 COR OF THE W 1/4 OF SEC 22 AND RUNNING NORTH ON THE
 LINE OF EIGHTIES THROUGH SAID QUARTER SECTION AND
 THROUGH SEC 15 AND A PORTION OF SEC 10, UNTIL IT
 INTERSECTS THE ROAD RUNNING WEST FROM VAN TATTENS
 BRIDGE THROUGH SEC 10,
- 1993 BARNES G-13 DUG 4' DEEP AND FOUND NOTHING. CORNER
 WAS RESTORED THROUGH ACCEPTANCE OF OBLITERATED
 EVIDENCE LOCATION. THE CENTER OF THE N/S PAVEMENT
 AND THE CENTER OF THE PAVEMENT TO THE WEST IS IN
 HARMONY WITH THE ROAD RECORDS. THE DISTANCES FROM
 THE QUARTER CORNER TO THE SE AND NE CORNERS OF
 SECTION 9 IS ALSO IN HARMONY WITH THE DISTANCES
 ALONG THE WEST LINE OF SECTIONS 4,9, AND THE W 1/4 OF
 SECTION 3.
- 1998 COMBS CSM VOL 22 PG 187 PK. 5284.90 TO ALUM @ W 1/4
 COR SEC 9
- 2002 MARTY #14357,#14329,#14358 COMPUTED POSITION
 FROM TIES 900-03-13E 2677.02 TO ALUM @ SW COR SEC
 10, N89-48-46E 5282.96 TO CONC. MON/BRASS CAP @ E
 1/4 COR SEC 10, N89-48-49E 2660.74 TO SET REROD @
 CENTER OF SEC 10

Donald Baues
 3/17/09

PD537 E1/4CORSEC9

FD REFERENCE MONUMENTS & COMPUTED POSITION.

C) Was the corner restored through acceptance of (1) an obliterated evidence location, or, (2) a found perpetuated location?

ACCEPTED COMPUTED TIE POSITION. THE DISTANCE TO THE NW COR SEC 3 IS 7913.4X' AND THE 1856 PORTER TOWN RECORDS BK 1 PAGE 8 CALLS FOR 7920. THE SMALL DIFFERENCE OF 6.58' SUPPORTS THE POSITION.

D) Describe any material discrepancy between the location of the corner as restored or reestablished and the location of that corner as previously restored or reestablished by distance and direction. Show the discrepancy on the plan view drawing under (a), above. Show the distances between the corner as previously restored or reestablished and (1) the corner as restored or reestablished, and (2) to at least 4 of the witness monuments shown on the drawing in (a), above.

NONE

(E) Was the corner reestablished through lost corner proportionate methods? If so, show the method, including the directions and distances to other public land survey corners used as evidence or used for proportioning the corner location.

NO

I, **Donald Barnes**, hereby certify that the corner location as identified by the corner code index was determined by me under my direction and control and that this U.S. Public Land Survey Monument Record is correct and complete to the best of my knowledge and belief.

Donald Barnes
Seal
Barnes
Emboss

SHEET 2 OF 3

3/17/09

CORNER CODE

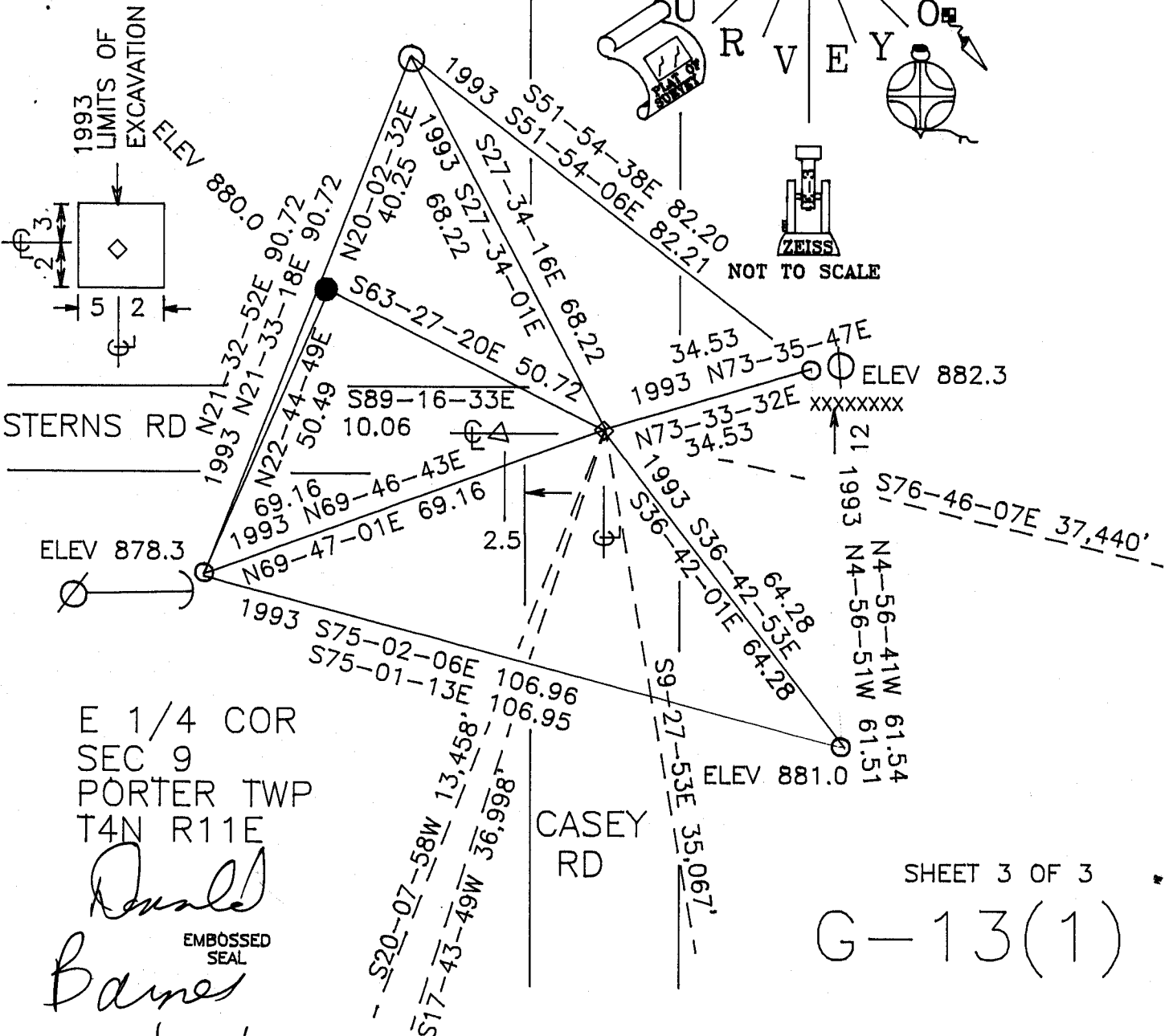
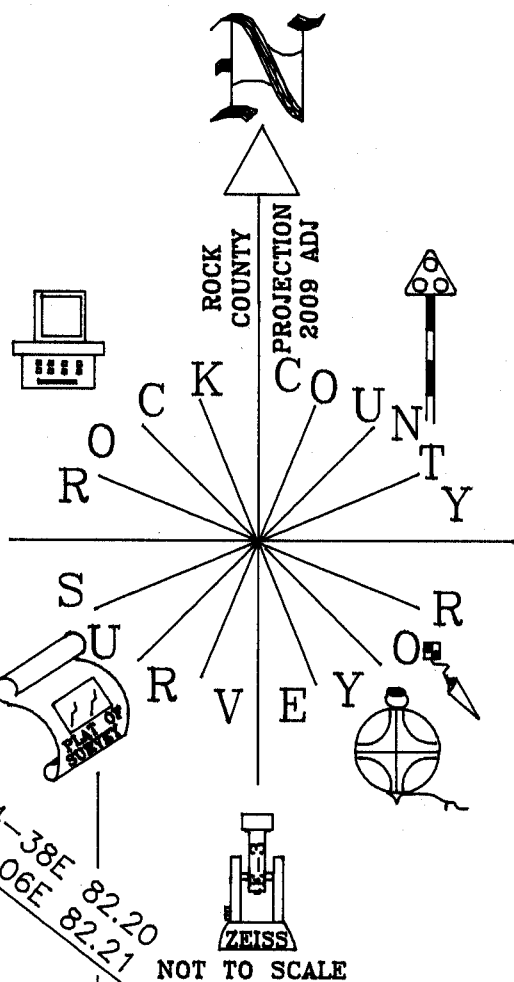
G-13(1)

A.E. 7.08 REQUIREMENT

ELEVATION BASED ON
DIGITAL CONTOUR @
E 1/4 COR

- ◇ E 1/4 COR
ELEV 880.6
- △ COTTON GIN @ C
ELEV 880.6
- FD 3/4" REROD
WITH PLASTIC CAP
- SET 3/4X24 REROD
WITH PLASTIC CAP
FB# 3 PG 51

OBSERVATION SHEET #2 & 375



STERNS RD

CASEY RD

E 1/4 COR
SEC 9
PORTER TWP
T4N R11E

Donald Barnes
EMBOSSED SEAL
3/17/09

SHEET 3 OF 3

G-13(1)