

Paper weight-110# (minimum)

Black nonfading ink required

# U.S. PUBLIC LAND SURVEY MONUMENT RECORD

For Public Land Survey Corners In:

WI ADMINISTRATIVE CODE A-E 7.08 REQUIREMENT

T. 4 N. R. 11 E. 4th P.M.

REV 10/23/2004

USMONREC.DWG

CORNER CODE INDEX

PORTER TWP

ROCK COUNTY WI

IF AVAILABLE

ROCK COUNTY COORDINATES PREFERRED

1	2	3	4	5	6	7	8	9	10	11	12	13	14	15	16	17	18	19	20	21	22	23	24	25	
A																									A
B	6					5					4			3			2					1			B
C																									C
D																									D
E																									E
F	7					8					9			10			11					12			F
G																									G
H																									H
J																									J
K	18					17					16			15			14					13			K
L																									L
M																									M
N																									N
O																									O
P	19					20					21			22			23					24			P
Q																									Q
R																									R
S																									S
T	30					29					28			27			26					25			T
U																									U
V																									V
W																									W
X	31					32					33			34			35					36			X
Y																									Y
Z																									Z

North \_\_\_\_\_ Elev. \_\_\_\_\_

East \_\_\_\_\_

Hor. Datum \_\_\_\_\_ Vert. Datum \_\_\_\_\_

LATITUDE \_\_\_\_\_ ELLIPS. HT. \_\_\_\_\_

LONGITUDE \_\_\_\_\_

NAD83(91) \_\_\_\_\_ NETWORK ADJ. YR \_\_\_\_\_

GPS (X) \_\_\_\_\_ TRAVERSE (X) \_\_\_\_\_

BASED ON THE FOLLOWING CONTROL:

\_\_\_\_\_

PLACE MONUMENT SYMBOL  AT PROPER LOCATION ON ABOVE INDEX

CORNER MONUMENT

WITNESS MONUMENT

BEARINGS ARE BASED ON: \_\_\_\_\_

FIELD BOOK \_\_\_\_\_ PAGE # \_\_\_\_\_

SHEET 1 OF 3

SHOW A PLAN VIEW DRAWING DEPICTING THE CORNER MONUMENT AND SURROUNDING PHYSICAL FEATURES, INCLUDING THE EXCAVATION AREA AND DEPTH.

PLANNING & ZONING COMMITTEE ADOPTED THIS FORM ON 12/2/1982

CORNER CODE C-13(1)

P0517

E1/4CORSEC4

(B) Describe any record evidence, monument evidence, occupational evidence, testimonial evidence or any other material evidence you considered, and whether the monument was found or placed.

- 1833 (NOV 3) HARRISON T4N R11E 4<sup>TH</sup> MER. NORTH BETWEEN  
SECS 3 & 4  
825.0 CREEK CRS S.E.  
1362.24 BURR OAK 12  
2640.00 QUARTER SEC. COR. BURR OAK 12 S74W  
45.54'; BURR OAK 12 S45E 85.8'. {BURR OAK  
12; BURR OAK 12}  
2772.0 ENTER MARSH  
5214.00 INT. N. BDY 24.42' EAST OF POST IN MARSH  
{WILLOW 8 S60E 46.86'; ASPEN 6 S30W  
47.52' LAND FOR THE 1<sup>ST</sup> 1/2 MILE SAME AS  
BEFORE 2<sup>ND</sup> 1/2 LEVE & WEST 3<sup>RD</sup> RATE BEING  
MARSH
- 1856 PAGE 66 OF ROAD RECORDS. BOARD DIRECTED ROAD TO  
BE MADE. BEGINNING AT THE N.W. CORNER OF SECTION 3;  
THENCE SOUTH ON THE LINE BETWEEN SECTION 3&9&10,  
120 CHAINS TO THE 1/4 POST ON THE WEST LINE OF  
SECTION 10; THENCE EAST ON THE E&W 1/4 LINE OF  
SECTION 10, 20 CHAINS TO A POINT UNITING WITH A ROAD  
RUNNING N&S ON THE LINE DIVIDING THE 1 1/2 FROM 1 1/2  
OF THE SW 1/4 OF SECTION 10 AND THE WHOLE LENGTH OF  
THE ROAD IS 66' WIDE.
- 18?? RUGER MAP #3552 FOUND OLD STAKE AND ALSO THE  
STUMPS OF BOTH B.T. DROVE STAKE DEEP AND PUT ON TOP  
OF IT HH  
22X14X12
- 1871 PORTER TWP RD REC BK #3 PG 3 COMMENCING IN THE  
CENTER OF THE HIGHWAY 627' SOUTH OF THE QUARTER  
POST ON THE WEST SIDE OF SEC 3 NEAR A. PECK'S HOUSE;  
THENCE RUNNING EAST ABOUT 172.42' TO A FENCE  
RUNNING NORTH AND SOUTH ON SAID LAND SAID POINT  
BEING ABOUT 198' NORTH OF HENRY PRATTS STONE BARN;  
THENCE NORTH TO THE QUARTER LINE ON SEC 3 AND  
MAKING CONNECTION WITH THE HIGHWAY AS IT NOW RUNS.  
THE ABOVE FENCE TO CONSTITUTE THE EAST BOUNDARY OF  
SAID NORTH AND SOUTH HIGHWAY AND THE SAME IS LAID  
OUT OF THE WIDTH OF 66'. THAT PORTION OF ROAD, AS  
NOW LAID OUT WHICH IS INCLUDED BETWEEN THE 2 POINTS  
NAMED ABOVE BE AND THE SAME IS DISCONTINUED.
- 1871 PORTER TWP RD REC BK #3 PG 4 BEGINNING AT THE BRIDGE  
ON BAD FISH RIVER WHERE THE SAID RIVER CROSSES THE  
ROAD RUNNING BETWEEN SECTIONS 3 AND 4 AND FROM  
THENCE IN A NORTHEASTERLY DIRECTION TO A POINT 99'  
WEST OF HENRY PRATTS STONE BARN AND FROM THENCE  
NORTH UNTIL IT INTERSECTS THE ROAD ON SAID LINE AND  
THE SAME IS LAID OUT OF THE WIDTH OF 66'  
COMMENCING 627' SOUTH OF THE QUARTER POST ON THE  
WEST SIDE OF SEC 3 NEAR A. PECKS HOUSE, THENCE EAST  
ABOUT 990'; THENCE NORTH TO THE QUARTER LINE ON SEC  
3, IS HEREBY VACATED.
- 1872 LEE VOL 2 PG 82 & MAP #3551 FOUND STUMP OF BTS AND  
OLD STAKE. USED TO SUBDIVIDE SECTION 3. CALLS FOR  
2566.08' TO THE NW CORNER OF SECTION 3.
- 1874 RUGER VOL 2 PG 129 FOUND OLD STAKE & STUMP OF BOTH  
BTS DROVE STAKE DEEP & PUT ON TOP OF IT HH STONE  
22X14X12. USED TO SUBDIVIDE SECTION 4. CALLS FOR  
2597.79 TO CENTER OF SECTION 4.
- 1882 LEE MAP #6836 USED MONUMENT TO SUBDIVIDE SECTION  
3. AT CENTER HE PLACED A DRY OAK STAKE AND  
SURROUNDED IT BY 4 HH.
- 1885 RUGER VOL 2 PG 292 REFERS TO EARLIER WORK. CALLS  
FOR 2686.20' TO CENTER OF SECTION 3.

*Dwight Barnes*  
3/14/2009

SHEET 1 OF 3  
CORNER CODE C-13(1)

PO517 EYA Sec 4

1885 RUGER MAP #6837 USED CORNER TO SUBDIVIDE SECTION 3. CALLS FOR 2686.20' TO CENTER OF SECTION 3. PLACED NOTHING AT CENTER OF SECTION.

1991 BARNES VOL 6 PG 417 DRAWING SHOWS RECORD DISTANCES.

1993 BARNES C-13 DUG & FOUND NOTHING. PLACED ALUMINUM MONUMENT AND CARSONITE POST. CORNER RESTORED THROUGH ACCEPTANCE OF OBLITERATED EVIDENCE LOCATION. I PLACED THE CORNER ON LINE WITH THE CENTER AND W 1/4 CORNER OF SECTION 4 AND THE N/S FENCE. THIS IS IN HARMONY WITH LEE'S 1872 DISTANCE TO THE NE CORNER OF SECTION 4 AND RUGER'S DISTANCE TO THE CENTER OF SECTION 4. IT IS ALSO IN HARMONY WITH THE SUM OF RUGER AND LEE'S DISTANCES ALONG THE E/W CENTER LINE OF SECTION 3 TO THE E 1/4 CORNER OF SECTION 3.

1995 LATHROP #9359 ALUM. S00-45-20E 2670.77 TO ALUM @ SE COR SEC 4.

1999 NORTHROP #7419 ALUM MON. S00-55-46E 2670.64 TO ALUM @ SE COR SEC 4

2004 BAKER #14776 ALUM MON. S00-55-46E 2670.64 TO ALUM MON @ SE COR SEC 4

2005 COMBS #M15203 ALUM. MON 5203.85 TO CUT STONE @ W 1/4 COR SEC 6.

2008 SANDSNES MAP # FD ROCK COUNTY ALUM. MON. REPRESENTING THE E 1/4 COR SEC 4. S89-19-33E 5300.07 TO FD 1" PIPE @ E 1/4 COR SEC 3, S0-55-46E 2670.64 TO FD ALUM. MON. @ SE COR SEC 4, S89-41-37W 2598.90 TO ALUM @ CENTER OF SEC 4.

I USED MY 1993 OBSERVATIONS.

C) Was the corner restored through acceptance of (1) an obliterated evidence location, or, (2) a found perpetuated location?

ACCEPTED ALUM MON OF RECORD.

D) Describe any material discrepancy between the location of the corner as restored or reestablished and the location of that corner as previously restored or reestablished by distance and direction. Show the discrepancy on the plan view drawing under (a), above. Show the distances between the corner as previously restored or reestablished and (1) the corner as restored or reestablished, and (2) to at least 4 of the witness monuments shown on the drawing in (a), above.

(E) Was the corner reestablished through lost corner proportionate methods? If so, show the method, including the directions and distances to other public land survey corners used as evidence or used for proportioning the corner location.

I, **Donald Barnes**, hereby certify that the corner location as identified by the corner code index was determined by me under my direction and control and that this U.S. Public Land Survey Monument Record is correct and complete to the best of my knowledge and belief.

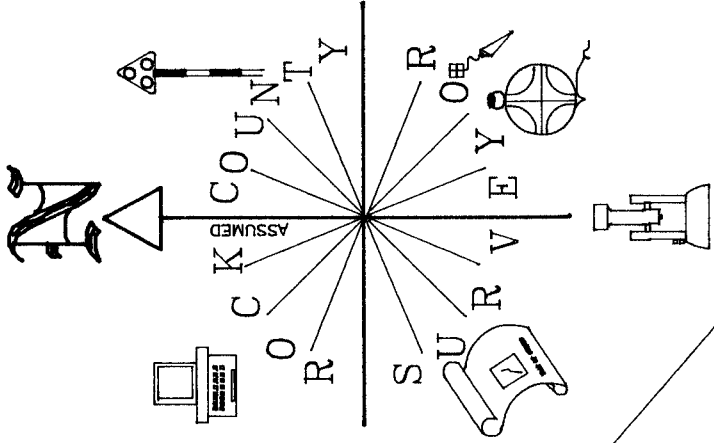
Seal  
  
 Emboss

SHEET 2 OF 3

3/14/2009

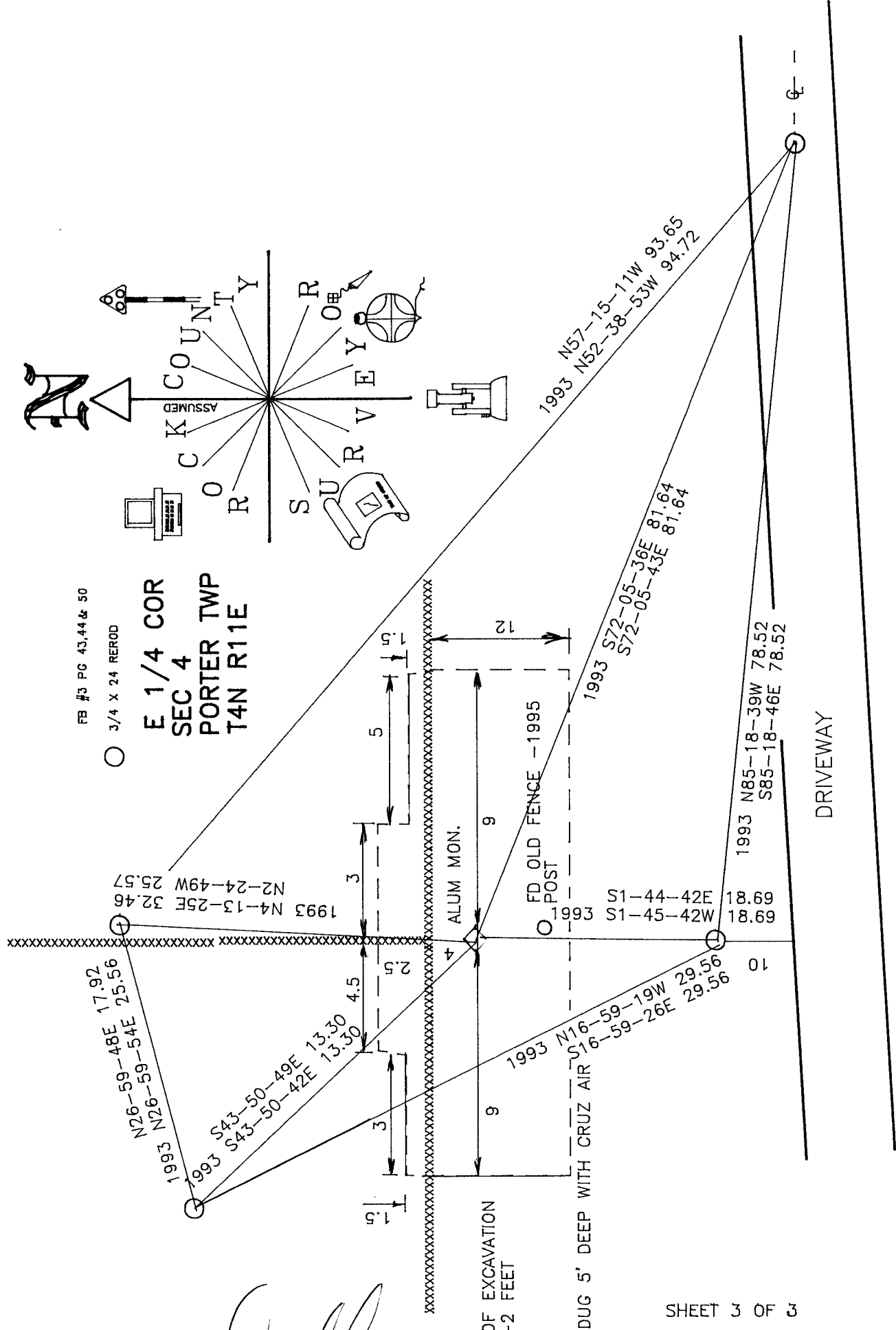
CORNER CODE  
 A.E. 7.08 REQUIREMENT

**C-13(1)**



FB #3 PG 43,44 & 50  
 3/4 X 24 REROD

**E 1/4 COR  
 SEC 4  
 PORTER TWP  
 T4N R11E**



XXXXXXXXXX

*Donald Barnes*  
 EMBOSSED SEAL  
 3/16/09

LIMITS OF EXCAVATION  
 DUG 1-2 FEET

C-13(1)

SHEET 3 OF 3

DUG 5' DEEP WITH CRUZ AIR