

U.S. PUBLIC LAND SURVEY MONUMENT RECORD

For Public Land Survey Corners in:

WI ADMINISTRATIVE CODE A-E 7.08 REQUIREMENT

T. 11 N., R. 11 E

CORNER CODE INDEX

A	1	2	3	4	5	6	7	8	9	10	11	12	13	14	15	16	17	18	19	20	21	22	23	24	25
B	6																								
C		5																							
D			4																						
E				3																					
F					2																				
G						1																			
H	7						8																		
I								9																	
J									10																
K										11															
L											12														
M												13													
N	18												14												
O														15											
P															16										
Q																17									
R																	18								
S																		19							
T																			20						
U																				21					
V																					22				
W																						23			
X																							24		
Y																									25
Z																									26

NEWARK TWP

ROCK COUNTY WI

IF AVAILABLE
ROCK COUNTY COORDINATES PREFERRED

North _____ Elev. _____

East _____

Hor. Datum _____ Vert. Datum _____

LATITUDE _____ ELLIPS. HT. _____

LONGITUDE _____

GPS (X) _____ TRAVERSE (X) _____

BASED ON THE FOLLOWING CONTROL:

PLACE MONUMENT SYMBOL  AT PROPER LOCATION ON ABOVE INDEX

 CORNER MONUMENT

 WITNESS MONUMENT

(a)

BEARINGS ARE BASED ON: _____

OBSERVATION sheet 561, of 421

FIELD BOOK _____ PAGE # _____

SHEET 1 OF 4

SHOW A PLAN VIEW DRAWING DEPICTING THE CORNER MONUMENT AND SURROUNDING PHYSICAL FEATURES, INCLUDING THE EXCAVATION AREA AND DEPTH.

PLANNING & ZONING COMMITTEE ADOPTED THE ABOVE FORM ON 12/2/1982

CORNER CODE N1(1)

NE561

(B) Describe any record evidence, monument evidence, occupational evidence, testimonial evidence or any other material evidence you considered, and whether the monument was found or placed.

1833 MULLETT

NORTH ON EAST SIDE SECTION 24

1150.38 BUR OAK 10 IN DIA

2640 SET QUARTER SECTION POST BUR OAK 8 S68W 7.92'; BUR OAK 10 N29W 82.5'

5280 SET POST CORNER SECTIONS 13 & 24 BUR OAK 14 S33W 64.02'; BUR OAK 16 N12W 34.98'

LAND ROLLING SECOND RATE THICKLY TIMBERED WITH BUR WHITE AND BLACK OAK RED ROOT ROSE WILLOW

NORTH ON EAST SIDE SECTION 13

2640 SET QUARTER SECTION POST BUR OAK 18 S35W 104.28'; BUR OAK 6 N13W 40.92'

3201 ENTER MARSH

5280 SET POST CORNER SECTION 12 & 13 MADE A MOUND OF EARTH AND SODS FIRST 1/2 LAND ROLLING SECOND RATE THICKLY TIMBERED WITH BLACK, WHITE, & BUR OAK LAST 1/2 LEVEL WET MARSH

1834 MILLER

PG 34 WEST RANDOM BETWEEN SEC 18 & 19

5320.26 INTERSECT RANGE LINE 33' SOUTH POST

LAND GENTLY ROLLING 2ND RATE TIMBER OAK & HICKORY SCATTERING

EAST CORRECTION

SET POST COR 18 & 19

BUR OAK 18 S65E 35.64'; BURR OAK 22 N75E 29.04'

2680.26 SET 1/4 SEC POST BUR OAK 16 S13W 74.58', BUR OAK 16 N18W 34.98'

4696.56 YELLOW OAK 24 IN DIA

5320.26 SEC COR

1834 ORIG PLAT SHOWS NO JOG AT TWP LINE.

1834 HARRISON

PG 42 EAST ON RANDOM BET. SECS 13 & 24 (AVON TWP)

2640 TIMPY 1/4 POST

5306.4 INT. E. BDG 55.44' NORTH OF POST LAND 2ND RATE TIMBER BURR OAK

WEST COR WEST BET 13 & 24

2653.2 QUARTER SEC COR BURR OAK 12 S46W 15.84'; BUR OAK 18 N53W 36.96'; BUR OAK 12 BURR OAK 18

3821.4 BUR OAK 14

4146.12 BURR OAK 10

5306.4 SEC COR

1870 RUGER VOL 2 PG 42 FD STUMPS OF ALL OF THE BEARING TREES. ALSO FD OLD STAKE. SET HH 24X15X4 SURROUNDED BY 4 HH VAR 4-56 2748.08 TO N 1/4 COR SEC 19 & VAR 6-45 2665.41 TO W 1/4 COR SEC 19

1870 RUGER VOL 2 PG 48 SEE PLAT OF SEC 19 NEWARK PG 28 (42)

VAR 6-15 2668.71 TO S 1/4 COR SEC 13, VAR 5-58 2667.72 FROM S 1/4 TO SW CORNERS SEC 13 AVON.

1871 RUGER VOL 2 PG 73 SEE PLAT OF SEC 19 NEWARK PG 28 (42)

VAR 6-15 2668.71 TO S 1/4 COR SEC 13 & VAR 6-05 2662.44 TO E 1/4 COR SEC 13, VAR 5-58 2667.72 FROM S 1/4 COR TO SW COR SEC 13 AVON.

1871 COLLIN'S REMONUMENTATION NOTES

PG 204 NORTH ON WEST LINE OF SEC 18 VARIATION 6-30

2658.48 INTERSECT 1/4 LINE 7.26' EAST OF CORNER. SET 1/4 STONE IN PLACE OF STONE SET BY RUGER AGREEING WITH STUMPS OF WITNESS TREES. CORRECTED VARIATION 6-20

SHEET 1 OF 4 N-1(1)

Paul Barry
6-19-01

NE561

CONTINUED NORTH VARIATION 5-45

5330.82 SET STONE IN MARSH FOR CORNER OF 7 & 18 IN PLACE OF STAKE AND STONES IN MOUND.

PG 203 NORTH ON WEST LINE OF 19 VARIATION 6

2674.32 SET 1/4 STONE IN PLACE OF STONE SET BY RUGER AGREEING WITH ROOTS OF WITNESS TREES. NOV 3RD 1871

CONTINUED NORTH VARIATION 6-30

5346 INTERSECT SECTION LINE 6.6' WEST OF CORNER. SET STONE FOR CORNER OF 18 & 19 IN PLACE OF STONE SET BY RUGER CORRECTED VARIATION 6-39

PG 192 WEST BETWEEN 18 & 19 VARIATION 3-50

2652.54 SET 1/4 STONE IN PLACE OF STONE SET BY RUGER AGREEING WITH ROOTS OF WITNESS TREES.

EAST BETWEEN 18 & 19 (NOV 4) VARIATION 3

2750.88 1/4 STONE SET NOV 2

1974 LEE VOL 5 PG 47 SET 5/8 PIN. 2675.35 TO S 1/4 COR SEC 13 AVON TWP & 5350.70' TO SW COR SEC 13. STATES NOTHING ABOUT HOW HE ESTABLISHED CORNER.

1975 LEE VOL 5 PG 52 BK 176/40 NO DESCRIPTION OF MONUMENT. SET TIES. 3' SOUTH OF NORTH PVMT EDGE ON LINE N/S FENCE, ON TOP OF CULVERT.

1981 BARNES VOL 6 PG 135 FD TIES. SET R/R (3' SOUTH OF CENTER PVMT) ON TOP OF CMP.

1995 BARNES REPORTING FOLLOWING WPL GPS DATA BASED ON NAD83(91) COORDINATES: SW COR SEC 13 AVON N/S 198,502.693; E/W 2,165,850.195 S 1/4 COR SEC 13 N/S 198,518.918; E/W 2,168,525.392; SW COR SEC 18 NEWARK N/S 198,535.533; E/W 2,171,200.932

I CONVERTED THE WPL COORDINATES TO THE FOLLOWING COUNTY COORDINATES: SW COR SEC 13 N/S 217,923.938; E/W 427,306.484 S 1/4 COR SEC 13 N/S 217,910.496; E/W 429,981.677 SW COR SEC 18 NEWARK N/S 432,657.220; E/W 217,897.435

BASED ON THE COUNTY SYSTEM THE FOLLOWING ARE THE BEARING & DISTANCE:

SW SEC 13 TO S 1/4 COR 13 S89-42-44E 2675.23: S 1/4 COR SEC 13 TO SW COR SEC 18 S89-43-13E 2675.56. BASED ON THIS IT APPEARS THE LEE'S INTENT WAS TO PLACE THE

S 1/4 COR SEC 13 ON LINE WITH THE SW & SE CORNERS OF SEC 13 AT MID DISTANCE.

FD 3/4 X 24 REROD. USED WPL COORDINATES AS A CONTROL POINT IN TOWNSHIP ADJUSTMENT.

C) Was the corner restored through acceptance of (1) an obliterated evidence location, or, (2) a found perpetuated location?

SINCE THE CMP PROBABLY DESTROYED THE CUT LIMESTONE, I DID NOT EXCAVATE FOR THE L.S.. LEE NEVER STATED THE REASONS FOR ESTABLISHING THE CORNER BUT SINCE IT IS IN HARMONY WITH COLLIN'S REMONUMENTAION DISTANCES I ACCEPTED HIS MONUMENT.

Donald Barnes
6-19-01

SHEET 2 OF 4 CORNER CODE N-1(1)

NE561

D) Describe any material discrepancy between the location of the corner as restored or reestablished and the location of that corner as previously restored or reestablished by distance and direction. Show the discrepancy on the plan view drawing under (a), above. Show the distances between the corner as previously restored or reestablished and (1) the corner as restored or reestablished, and (2) to at least 4 of the witness monuments shown on the drawing in (a), above.

THE ORIGINAL GOV. SURVEYORS, MILLER & MULLETT EACH SET A POST. ONE FOR THE CLOSING CORNER FOR NW COR OF SEC 19 NEWARK AND THE OTHER THE STANDARD CORNER FOR THE TOWNSHIP LINE.

DURING MARCH OF 1833, HARRISON SURVEYED AVON TWP SOUTH OF SUGAR RIVER & IN JANUARY OF 1834, HE SURVEYED THE TWP NORTH OF SUGAR RIVER. HE ALSO HAD A SPECIAL CONTRACT TO SURVEY THE SOUTH LINE OF SEC 36 AVON TWP, WHICH HE DID IN 1834. IN THE 1834 SURVEY HE NOTES WHILE SURVEYING THE NORTH LINE OF SEC 36 HE "INT. THE EAST BOUNDARY IN MARSH 924' ". IS THE "924'" THE DISTANCE TO THE RANDOM STATE LINE? LATER THAT SPRING, MILLER SURVEYED NEWARK TWP. IN THE TOWNSHIPS TO THE NORTH, STANDARD AND CLOSING CORNERS ON THIS LINE ARE DOCUMENTED AND PERPETUATED. MILLER'S FIELD NOTES STATE HE SET POSTS & BEARING TREES WHERE HE CLOSED ON THE AVON/NEWARK TOWN LINE FROM THE STATE LINE TO THE NW CORNER OF SEC 19. SINCE COLLIN ACCEPTED BEARING TREE EVIDENCE AT THE 1/4 CORNERS ALONG THE TOWN LINE FROM THE SW COR SEC 31 TO THE NW COR SEC 19, HE MUST OF CONSIDERED THE AVON AND NEWARK CORNERS TO BE COMMON. SINCE THE ORIGINAL GOV. SURVEYORS SET STANDARD AND CLOSING CORNERS ON THIS LINE, DID COLLIN USE THE BEARING TREES AT THE CLOSING CORNERS FOR NEWARK OR AVON TOWNSHIP? HIS MEASUREMENTS SUPPORTS THE NOTION THAT HE USED MULLETT'S CORNERS.

(E) Was the corner reestablished through lost corner proportionate methods? If so, show the method, including the directions and distances to other public land survey corners used as evidence or used for proportioning the corner location.

I, Donald Barnes, hereby certify that the corner location as identified by the corner code index was determined by me under my direction and control and that this U.S. Public Land Survey Monument Record is correct and complete to the best of my knowledge and belief.

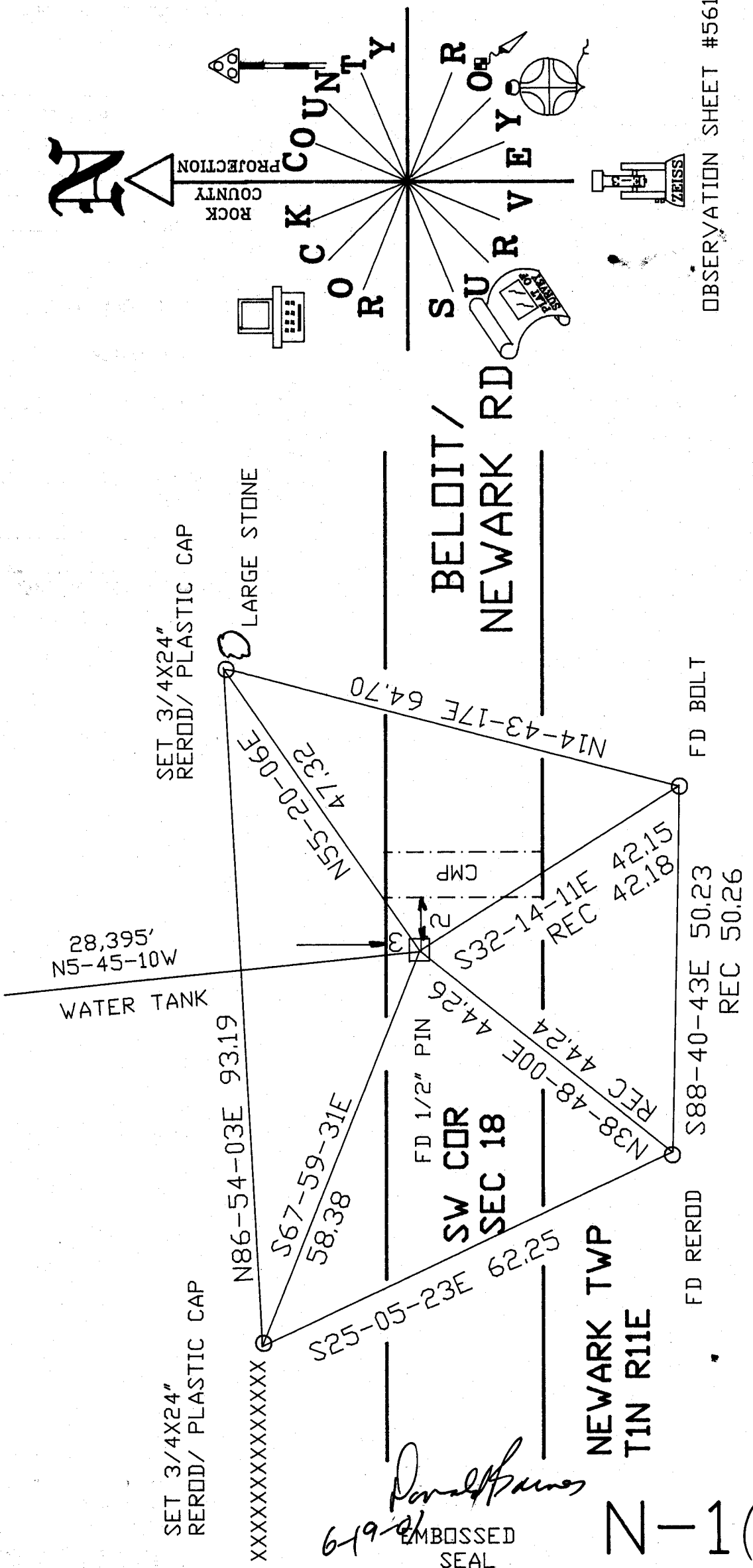
seal
Donald Barnes
emboss 6-19-01

SHEET 3 OF 4

CORNER CODE N-1(1)

A-E 7.08 REQUIREMENT

4 OF 4



6-19-01
 Donald James
 EMBOSSED SEAL

N-1(1)