

Paper weight-110# (minimum)

Black nonfading ink required

U.S. PUBLIC LAND SURVEY MONUMENT RECORD

For Public Land Survey Corners In:

WI ADMINISTRATIVE CODE A-E 7.08 REQUIREMENT

T. 4 N. R. 11 E. 4th P.M.

REV 10/23/2004

USMONREC.DWG

CORNER CODE INDEX

PORTER TWP

ROCK COUNTY WI

IF AVAILABLE

ROCK COUNTY COORDINATES PREFERRED

A	2	3	4	5	6	7	8	9	10	11	12	13	14	15	16	17	18	19	20	21	22	23	24	25	A
B		6				5					4				3					2				1	B
C																									C
D																									D
E																									E
F																									F
G																									G
H																									H
J																									J
K																									K
L																									L
M																									M
N																									N
O																									O
P																									P
Q																									Q
R																									R
S																									S
T																									T
U																									U
V																									V
W																									W
X																									X
Y																									Y
Z																									Z

North _____ Elev. _____

East _____

Hor. Datum _____ Vert. Datum _____

LATITUDE _____ ELLIPS. HT. _____

LONGITUDE _____

NAD83(91) _____ NETWORK ADJ. YR _____

GPS (X) _____ TRAVERSE (X) _____

BASED ON THE FOLLOWING CONTROL:

1 2 3 4 5 6 7 8 9 10 11 12 13 14 15 16 17 18 19 20 21 22 23 24 25
PLACE MONUMENT SYMBOL AT PROPER LOCATION ON ABOVE INDEX

CORNER MONUMENT

WITNESS MONUMENT

BEARINGS ARE BASED ON: _____

FIELD BOOK _____ PAGE # _____

SHEET 1 OF 2

SHOW A PLAN VIEW DRAWING DEPICTING THE CORNER MONUMENT AND SURROUNDING PHYSICAL FEATURES, INCLUDING THE EXCAVATION AREA AND DEPTH.

PLANNING & ZONING COMMITTEE ADOPTED THIS FORM ON 12/2/1982

CORNER CODE E-19(1)

PO530

S1/4CORSEC2

(B) Describe any record evidence, monument evidence, occupational evidence, testimonial evidence or any other material evidence you considered, and whether the monument was found or placed.

1833 HARRISON (OCT 31ST) T4N R11E 4TH MER. EAST BET. SECS. 2 & 11

274.56 LEAVE CAT-FISH SET MEANDER POST
 2640.00 TEMPY 1/4 POST
 3828.0 ENTER PRAIRIE
 4264.92 TRAIL CRS N.W.
 5207.40 TRAIL NW
 5339.40 INT. E BDY 19.8' SOUTH OF POST
 LAND 1ST 1/2 MILE SAME AS BEFORE
 LAST 1/2 MILE LEVEL 1ST RATE PRAIRIE
 WEST COR. WEST
 2669.70 QUARTER SEC. COR. {BURR OAK 12 N70W
 91.08'; BURR OAK 12 S47E 137.28' {BURR
 OAK 12; BURR OAK 12} MARKED
 5339.40 SEC COR.

1886 RUGER VOL 2 PG 282 FD STUMP OF SE BT & WHRE STUMP OF NW BT HAD BEEN DUG UP COR FENCE POST CORRECT SURROUNDED IT WITH 10 OF HH STONES, VAR 6-34 2707.32 TO NE COR SEC 11, VAR 5-72' 2628.78 TO LIMESTONE 15X8X3 @ CENTER OF SEC 11.

1945 WIDOT 5TH 59 #3902 SHOWS CORNER BUT DID NOT USE IT OR STATE ANYTHING ABOUT THE MON.

2001 BARNES E-19 FOUND LARGE ROTTED WOOD POST SURROUNDED BY STONES THAT IS IN HARMONY WITH CENTER OF SEC 11 AND NE COR SEC 11. SET POLY. MON. & CARSONITE POST.

2001 COMBS #14240

I USED MY 2001 OBSERVATIONS

C) Was the corner restored through acceptance of (1) an obliterated evidence location, or, (2) a found perpetuated location?


ACCEPTED POLY MON.

D) Describe any material discrepancy between the location of the corner as restored or reestablished and the location of that corner as previously restored or reestablished by distance and direction. Show the discrepancy on the plan view drawing under (a), above. Show the distances between the corner as previously restored or reestablished and (1) the corner as restored or reestablished, and (2) to at least 4 of the witness monuments shown on the drawing in (a), above.

NO

(E) Was the corner reestablished through lost corner proportionate methods? If so, show the method, including the directions and distances to other public land survey corners used as evidence or used for proportioning the corner location.

I, Donald Barnes, hereby certify that the corner location as identified by the corner code index was determined by me under my direction and control and that this U.S. Public Land Survey Monument Record is correct and complete to the best of my knowledge and belief.

Seal

 Emboss
 Barnes

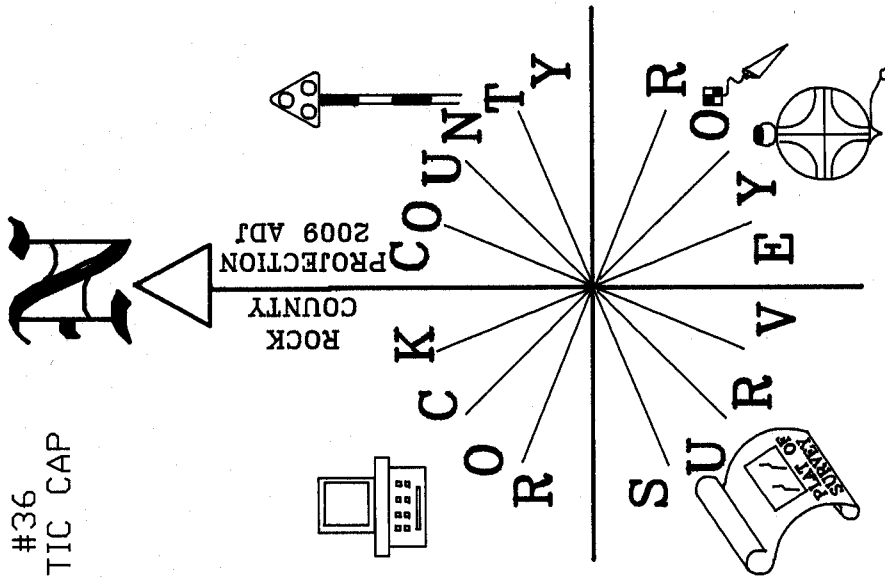
SHEET 1 OF 2

Apr 17 2009

CORNER CODE

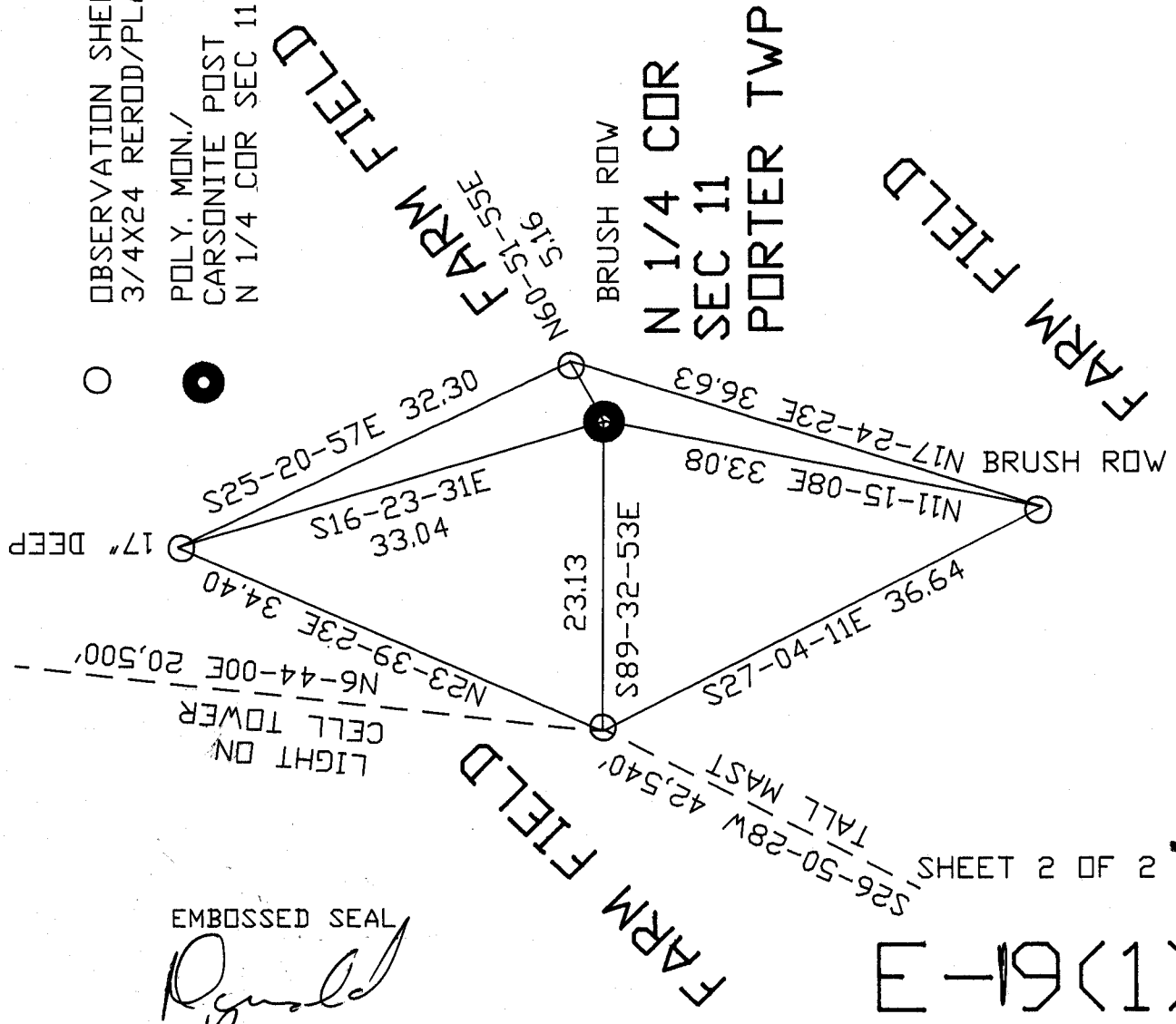
E-19(1)

A.E. 7.08 REQUIREMENT



ZEISS
NOT TO SCALE

OBSERVATION SHEET #36
3/4X24 REROD/PLASTIC CAP
POLY. MON./
CARSONITE POST
N 1/4 COR SEC 11



EMBOSSSED SEAL
Donald Barnes
APR 17 2009

(1)61-E