

Paper weight-110# (minimum)

Black nonfading ink required

# U.S. PUBLIC LAND SURVEY MONUMENT RECORD

For Public Land Survey Corners In:

WI ADMINISTRATIVE CODE A-E 7.08 REQUIREMENT

T. 4 N. R. 11 E. 4th P.M.

REV 10/23/2004

USMONREC.DWG

CORNER CODE INDEX

**PORTER** TWP

**ROCK COUNTY WI**

IF AVAILABLE

ROCK COUNTY COORDINATES PREFERRED

North \_\_\_\_\_ Elev. \_\_\_\_\_

East \_\_\_\_\_

Hor. Datum \_\_\_\_\_ Vert. Datum \_\_\_\_\_

LATITUDE \_\_\_\_\_ ELLIPS. HT. \_\_\_\_\_

LONGITUDE \_\_\_\_\_

NAD83(91) \_\_\_\_\_ NETWORK ADJ. YR \_\_\_\_\_

GPS (X) \_\_\_\_\_ TRAVERSE (X) \_\_\_\_\_

BASED ON THE FOLLOWING CONTROL:

1	2	3	4	5	6	7	8	9	10	11	12	13	14	15	16	17	18	19	20	21	22	23	24	25	
A																									A
B																									B
C	6																								C
D		5																							D
E			4																						E
F				3																					F
G					2																				G
H	7																								H
I		8																							I
J			9																						J
K				10																					K
L					11																				L
M						12																			M
N							13																		N
O								14																	O
P									15																P
Q										16															Q
R											17														R
S												18													S
T													19												T
U														20											U
V															21										V
W																22									W
X																	23								X
Y																		24							Y
Z																			25						Z
	1	2	3	4	5	6	7	8	9	10	11	12	13	14	15	16	17	18	19	20	21	22	23	24	25

PLACE MONUMENT SYMBOL  AT PROPER LOCATION ON ABOVE INDEX

CORNER MONUMENT

WITNESS MONUMENT

BEARINGS ARE BASED ON: \_\_\_\_\_

FIELD BOOK \_\_\_\_\_ PAGE # \_\_\_\_\_

SHEET 1 OF 4

SHOW A PLAN VIEW DRAWING DEPICTING THE CORNER MONUMENT AND SURROUNDING PHYSICAL FEATURES, INCLUDING THE EXCAVATION AREA AND DEPTH.

PLANNING & ZONING COMMITTEE ADOPTED THIS FORM ON 12/2/1982

CORNER CODE A 7 9(1)

PO510 N 1/4CORSEC2

(B) Describe any record evidence, monument evidence, occupational evidence, testimonial evidence or any other material evidence you considered, and whether the monument was found or placed.

- 1833 (SEP) BRINK & MULLETT T5N R11E WEST ON SOUTH SIDE SECTION 35
- 2640 SET QUARTER SECTION POST BUR OAK 10 N48E 25.08'; WHITE OAK 14 N34W 81.84'
- 3591.72 WHITE OAK 14IN DIAMETER
- 5032.50 CATFISH RIVER 171.6' @ SOUTH
- 5280.0 SET POST CORNER SECTIONS 34 & 35 BLACK OAK 11 N21E 7.26'; WHITE OAK 12 N63W 110.22' LAND ROLLING SECOND RATE AND THINLY TIMBERED WITH BLACK WHITE AND BUR OAK 1833 ORIG GOV PLAT NW COR SEC 2 PORTER TWP IS 23.10' EAST OF SW COR SEC 35 DUNKIRK TWP.
- 1833 ORIG GOV PLAT NW COR SEC 1 PORTER TWP IS 32.34' EAST OF SW COR SEC 35 DUNKIRK TWP.
- 1870 PORTER BK3 PG 1 " " " " BEGINNING AT A POINT IN THE CENTER OF THE HIGHWAY THAT RUNS SOUTHEASTERLY THROUGH THE N.W. 1/4 OF SEC 2 SAID POINT BEING WESTERLY AND NEAR THE BRIDGE CROSSING THE OUTLET OF A MARSH ON SAID 1/4 SECTION, THENCE NORTH EASTERLY ON THE WESTERLY SIDE OF SAID MARSH ON A LINE AS NEAR DIRECT AS GOOD GROUND FOR A ROAD WILL ADMIT TO THE 1/4 POST ON THE NORTH LINE OF SAID SECTION. " " " " SAID HIGHWAY TO BE FOUR RODS WIDE.
- 1888 LEE VOL 2 422 FD STAKE SET BY SELF
- 1893 VOL 6 PG 352 COPIED FROM DANE COUNTY SURVEYORS' RECORDS BK G PG 570. [2/11/1986-DON BARNES]. SHOWS NW COR SEC 1 AS 29.5' EAST OF SW COR SEC 36 DUNKIRK TWP, 2621 FROM SW TO W 1/4 COR SEC 36. SURVEYED ON THE ABOVE PLATTED SECTION 36, ON THE 21 & 22 DAY OF MAY 1872 COMMENCE AT THE NORTH QUARTER COR. SET STONE IN CORNER RUN EAST TO NE COR STAKE GONE FD 1 STUMP THE OTHERS ARE IN THE ROADS: SET STONE FOR CO DIVIDED UP THE NE 1/4 AS PLATED AMONG THE SEVERAL OWNERS AND SET STONES AT ALL OF THE CORNERS. I CERTIFY THE ABOVE TO BE CORRECT AS SURVEYED BY ME S.W. GRAVES COUNTY SURVEYOR. OCT 1885 ESTABLISHED THE SW COR ALTHOUGH WITH DIFFICULTY- COULD FIND ONLY ONE OF THE BEARING STUMPS BUT TRACED THE WEST LINE OF THE SECTION AND THINK THE CORNER IS CORRECT AS IT COMPARED ABOUT RIGHT WITH THE ROCK COUNTY CORNER BEARING AS FOLLOWED TO A STAKE WITH STONES AROUND IT BLK OAK 10 IN N17E 56.43"; BLACK OAK 6 INCH N36W 56.76' JOHN DOUGLAS COUNTY SURVEYOR. S 1/4 COR SEC 35 T5N R11E SET BY ROCK COU. SURVEYOR. 2656 FROM S 1/4 TO SE COR SEC 35.
- 1958 ELY #3542 STATES NOTHING ABOUT MON. CIRCLE ON MAP
- 1959 ELY #13534 & #13541 SHOWS A IRON STAKE NO1-50W 2279.40 FROM CENTER OF SEC 2. DOES NOT CALL FOR IT BEING THE N 1/4 COR SEC 10
- 1963 THOM #3535 FD 1 1/2 PIPE 54.0' EAST OF PIN @ CENTER OF RD. CALLS THE 1 1/2 PIPE THE N 1/4 COR SEC 2 WHICH IS NOT THE CORNER.
- 1964 BATTERMAN VOL 4 PG 185 FD 1 1/2 PIPE AT N 1/4 COR SEC 2 54.0 EAST OF PIPE IN CENTER OF ADOLPHSON RD. RD IS MONUMENTED WITH TIE TO CORNER.
- 1964 COMBS #3543 TIE SHEET FD 1" PIPE 54.0 EAST OF CENTER OF PVMT. CONNECTED TO R/W MONUMENTATION FOR ADOLPHSON RD.
- 1966 THOM #3533 SYMBOLIGY SHOWS A PIPE WHICH IS N88-31E 54.0' OF A PIPE IN THE CENTER OF THE PVMT. THE PIPE IN

SHEET 1 OF 4  
CORNER CODE A-19(1)

Donald Barnes

3/18/2009

PO510 N1/4COR-SE2

- THE CENTER OF THE PVMT IS N17-49E 87.22 OF ANOTHER PIPE IN THE CENTER OF THE PVMT.
- 1966 WEIR #3539 STATES NOTHING ABOUT MON. S88-31W 54.00, THEN ALONG CENTER OF RD S17-49W 87.22, THEN ALONG CENTER OF RD S31-08-15W 258.84
- 1967 THOM #3534 FD 1" PIPE. S88-3W 54.0 TO PIN IN CENTER OF PVMT, S1-40E 375.0 TO PIPE.
- 1973 WEIR #3537 STATES NOTHING ABOUT MON. N88-26-57E 2644.62 TO NE COR SEC 2, 36.42 EAST OF S 1/4 COR SEC 35.
- 1977 NORTHROP #3545 TIE FOR S 1/4 COR. SEC 35. I FD A 2" GALVANIZED PIPE AT THE ABOVE DESCRIBED 1/4 CORNER AND ACCEPTED SAME; SAID PIPE SET BY OTHERS. REF. CSM NO 993, DO. NO. 1347682, VOL 4 PG 259, CERTIFIED SURVEYS OF DANE COUNTY. 2" PIPE IS 8.84 EAST OF 1 1/4" PINCH TOP PIPE, 3' WEST OF FENCE INT. 62.8' EAST OF CENTER OF RD.
- 1979 BARNES VOL 5 PG 540 SHOWS SW SEC 35 TO S 1/4 COR SEC 35 T5N R11E 2648.39 NORTHROP SURVEY. LETTER TO NORTHROP: IT IS UNFORTUNATE THAT THERE IS NO EASY AND OBVIOUS SOLUTION. I BELIEVE THE FOLLOWING FACTS ARE CORRECT: 1) THE RECORDS INDICATE THE N 1/4 COR WAS FIRST ESTABLISHED IN OCTOBER 1958 BY ELY. 2) ELY ESTABLISHED THE CORNER BY IMPROPER METHODS OR BLUNDERED. 3) MANY SURVEYORS AND THE FORMER COUNTY SURVEYOR ACCEPTED AND USED THE CORNER ELY SET. IN FEBRUARY 1973 MR GEORGE WEIR, A FROMER EMPLOYEE OF ELY, DISAGREED WITH THE LOCATION AND ESTABLISHED THE N 1/4 COR AS PRESCRIBED BY THE MANUAL OF SURVEYING INSTRUCTIONS. I WILL REPLACE THE IRON PIPE GEORGE WEIR SET WITH AN ALUMINUM MONUMENT. I WILL ALSO REFERENCE THE CORNER ELY SET. IN MY OPINION THE CORNER GEORGE WEIR SET IS THE CORRECT N 1/4 CORNER OF SECTION 2. THIS OPINION IS BASED ON THE FOLLOWING REASONS: 1) THE RECORDS INDICATE ALIQUOT PARTS HAVE NOT BEEN SURVEYED. 2) IT IS IMPORTANT TO PRESERVE THE INTENT AND LOCATION OF THE SURVEYS AND DEEDS DETERMINED FROM ELY'S CORNER. LATER SURVEYS WOULD REDEFINE THE INTENT OF THE LANDOWNERS USING THE N 1/4 COR AS SET BY GEORGE WEIR. 3) IT APPEARS THAT SINCE ALIQUOT PARTS WERE NOT SURVEYED, TITILE CONFLICTS WILL BE MINMAL OR NON-EXISTENT. SHOWS ALUM MON AS 36.42 EAST OF 2" GALV. PIPE, 45.28 EAST OF 1 1/4 IP SET BY ELY, 99.28 EAST OF CENTER LINE RD.
- 1979 NORTHROP #3548 2" PIPE SET BY DANE COUNTY SURVEY EQUAL DISTANCE FROM NE & NW COR. S89-32W 45.28 TO 2" PIPE @ S 1/4 COR SEC 35
- 1979 NORTHROP #3549 SET BY DANE CO. SURVEYOR EQUIDISTANT FROM NE & NW CORNERS. 2" GALVANIZED PIPE ORIGINALLY SET NOW REPLACED WITH BERNTSEN MON. 36.42 EAST OF S 1/4 COR SEC 35.
- 1983 COMBS #13064 CALLES FOR COR BUT STATES NOTHING ABOUT MON.
- 1991 NORTRHOP CSM VOL 15 PG 82 & 120 FD 2" IP & FD 2" IP @ S 1/4 COR SEC 35 2648.43 FROM S 1/4 COR SEC 35 TO SW COR SEC 35.
- 2001 COMBS #14240 EAST 2645.12 TO IP @ NE COR SEC 2, S00-40-05W 5275.75 TO CI @ S 1/4 COR SEC 2
- 2007 RIESOP A-19 FD ALUM MON. OF REC @ N 1/4 COR SEC 2 & FD 2" GALVANIZED IRON PIPE OF RECORD @ S 1/4 COR SEC 35. ALSO FD 1 1/4 PINCHED TOP PIPE PREVIOUSLY SET BY SHEET 2 OF 4
- CORNER CODE A-19(1)

*Donald Barnes*

*3/18/2009*

PO510 N1/4COR-SE2

ELY FOR N 1/4 COR SEC. S89-08-44W 2648.83 FROM SW COR TO S 1/4 COR SEC 35. REFERENCED SAME. PINCHED PIPE IS S89-11-16W 8.84 FROM S 1/4 COR SEC 35, ALUM MON IS 36.47 EASTERLY OF S 1/4 COR SEC 35.

2007 PALMER #15693 FD ALUM MON. S88-32-40W 2643.39 TO A SET 1" PIPE @ THE SE COR SEC 34.

2008 NORTHROP GSM32-122 FD 2" PIPE OF REC @ S 1/4 COR SEC 35 S88-32-00W 2648.51 TO FD 1 1/4" PIPE @ SE COR SEC 34, NW COR SEC 2 TO 1" PIPE @ W 1/4 COR SEC 2 IS S0-08-48E 2669.35

FD ALUM. 0.5' NORTH OF E/W FENCE LINE. I PLACED A CARSONITE POST BY THE ALUM. MON.

C) Was the corner restored through acceptance of (1) an obliterated evidence location, or, (2) a found perpetuated location?

ACCEPTED FD ALUM. MON.

D) Describe any material discrepancy between the location of the corner as restored or reestablished and the location of that corner as previously restored or reestablished by distance and direction. Show the discrepancy on the plan view drawing under (a), above. Show the distances between the corner as previously restored or reestablished and (1) the corner as restored or reestablished, and (2) to at least 4 of the witness monuments shown on the drawing in (a), above.

THE DISCREPANCY IS SHOWN ON THE MAP

(E) Was the corner reestablished through lost corner proportionate methods? If so, show the method, including the directions and distances to other public land survey corners used as evidence or used for proportioning the corner location.

YES.

I, **Donald Barnes**, hereby certify that the corner location as identified by the corner code index was determined by me under my direction and control and that this U.S. Public Land Survey Monument Record is correct and complete to the best of my knowledge and belief.

Seal  
*Donald Barnes*

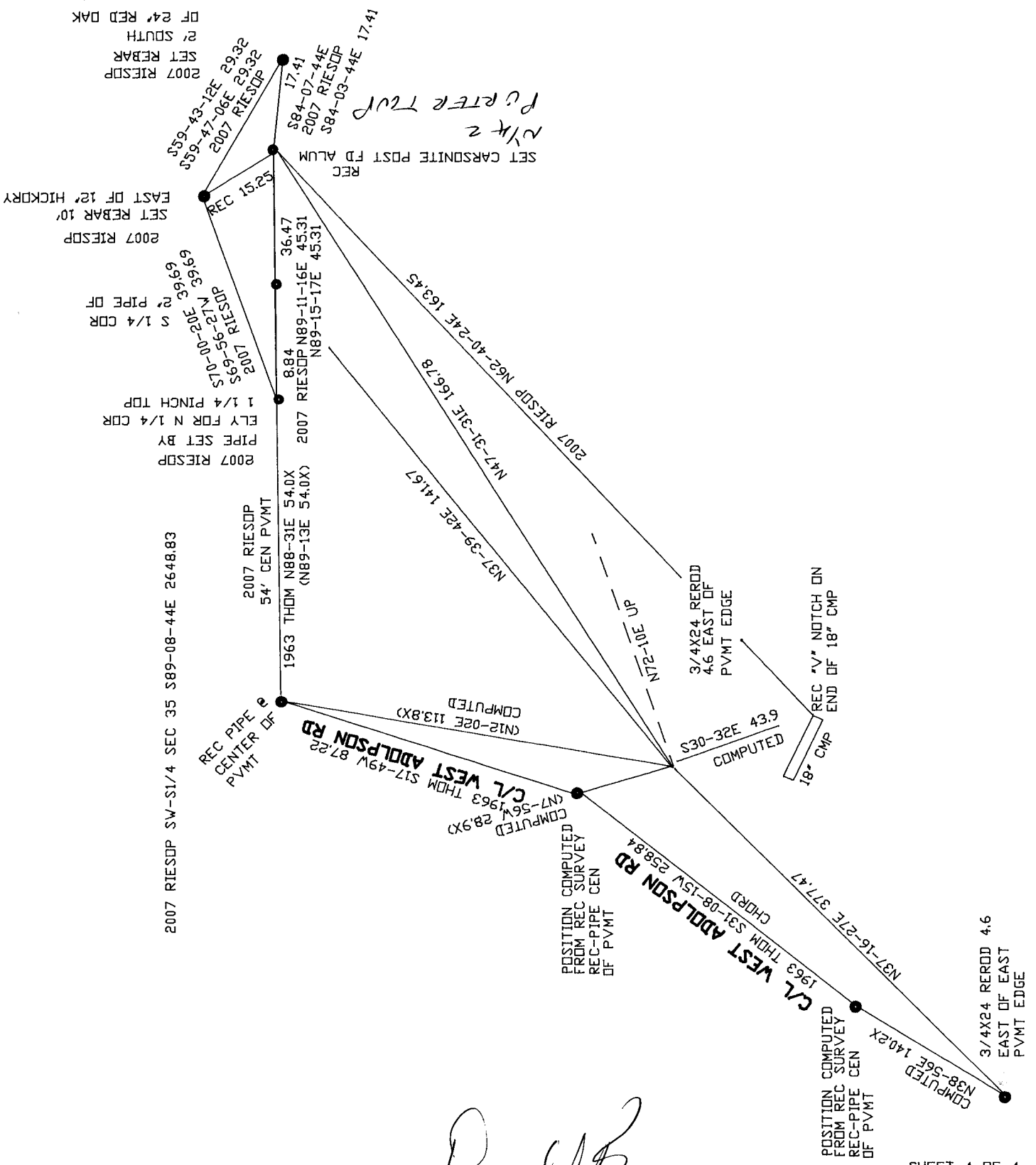
Emboss  
*Barnes*

*3/18/2009*

SHEET 3 OF 4

CORNER CODE **A-19(1)**

A.E. 7.08 REQUIREMENT



*Paul Bang*  
 EMBOSSED SEAL  
 3-18-2009

A-19(1)