

Paper weight-110# (minimum)

Black nonfading ink required

U.S. PUBLIC LAND SURVEY MONUMENT RECORD

For Public Land Survey Corners In:
T. 4 N. R. 11 E. 4th P.M.
CORNER CODE INDEX

WI ADMINISTRATIVE CODE A-E 7.08 REQUIREMENT
REV 10/23/2004 USMONREC.DWG

PORTER TWP
ROCK COUNTY WI

IF AVAILABLE
ROCK COUNTY COORDINATES PREFERRED

| | | | | | | | | | | | | | | | | | | | | | | | | | | |
|---|---|---|---|---|---|---|---|---|---|----|----|----|----|----|----|----|----|----|----|----|----|----|----|----|----|---|
| A | 1 | 2 | 3 | 4 | 5 | 6 | 7 | 8 | 9 | 10 | 11 | 12 | 13 | 14 | 15 | 16 | 17 | 18 | 19 | 20 | 21 | 22 | 23 | 24 | 25 | A |
| B | | 6 | | | | 5 | | | | 4 | | | | 3 | | | | 2 | | | 1 | | | | | B |
| C | | | | | | | | | | | | | | | | | | | | | | | | | | C |
| D | | | | | | | | | | | | | | | | | | | | | | | | | | D |
| E | | | | | | | | | | | | | | | | | | | | | | | | | | E |
| F | | | | | | | | | | | | | | | | | | | | | | | | | | F |
| G | | | | | | | | | | | | | | | | | | | | | | | | | | G |
| H | | | | | | | | | | | | | | | | | | | | | | | | | | H |
| J | | | | | | | | | | | | | | | | | | | | | | | | | | J |
| K | | | | | | | | | | | | | | | | | | | | | | | | | | K |
| L | | | | | | | | | | | | | | | | | | | | | | | | | | L |
| M | | | | | | | | | | | | | | | | | | | | | | | | | | M |
| N | | | | | | | | | | | | | | | | | | | | | | | | | | N |
| O | | | | | | | | | | | | | | | | | | | | | | | | | | O |
| P | | | | | | | | | | | | | | | | | | | | | | | | | | P |
| Q | | | | | | | | | | | | | | | | | | | | | | | | | | Q |
| R | | | | | | | | | | | | | | | | | | | | | | | | | | R |
| S | | | | | | | | | | | | | | | | | | | | | | | | | | S |
| T | | | | | | | | | | | | | | | | | | | | | | | | | | T |
| U | | | | | | | | | | | | | | | | | | | | | | | | | | U |
| V | | | | | | | | | | | | | | | | | | | | | | | | | | V |
| W | | | | | | | | | | | | | | | | | | | | | | | | | | W |
| X | | | | | | | | | | | | | | | | | | | | | | | | | | X |
| Y | | | | | | | | | | | | | | | | | | | | | | | | | | Y |
| Z | | | | | | | | | | | | | | | | | | | | | | | | | | Z |

North _____ Elev. _____

East _____

Hor. Datum _____ Vert. Datum _____

LATITUDE _____ ELLIPS. HT. _____

LONGITUDE _____

NAD83(91) _____ NETWORK ADJ. YR _____

GPS (X) _____ TRAVERSE (X) _____

BASED ON THE FOLLOWING CONTROL:

PLACE MONUMENT SYMBOL AT PROPER LOCATION ON ABOVE INDEX

CORNER MONUMENT

WITNESS MONUMENT

BEARINGS ARE BASED ON: _____

FIELD BOOK _____ PAGE # _____

SHEET 1 OF 2

SHOW A PLAN VIEW DRAWING DEPICTING THE CORNER MONUMENT AND SURROUNDING PHYSICAL FEATURES, INCLUDING THE EXCAVATION AREA AND DEPTH.

PLANNING & ZONING COMMITTEE ADOPTED THIS FORM ON 12/2/1982

CORNER CODE L-17(1)

PO558

W1/4CORSEC14

(B) Describe any record evidence, monument evidence, occupational evidence, testimonial evidence or any other material evidence you considered, and whether the monument was found or placed.

- 1833 HARRISON (OCT 29TH) T4N R11E 4TH MER. NORTH
 BET. 14 & 15
 667.26 BROOK 3.3' CRS N.E.
 2640.0 QUARTER SEC COR.
 POST & RAISED MOUND OF EARTH & SOD
 5280.0 SET COR TO SECS 10,11,14, 15
 MARKED POST & RAISED MOUND OF EARTH &
 SOD.
 LAND ROLLING 1ST RATE PRAIRIE GROWTH
 GRASS & WEEDS
- 1953 ELY #3598 IRON STAKE DRIVEN. EASTERLY 925.1 TO IRON
 STAKE, NORTHERLY 1652.5X TO IRON STAKE DRIVEN. MAP
 SHOWS AT FENCE INT.
- 1989 LEE #12002 NORTH 2654.04 TO FD PK @ NE COR SEC 15
- 1991 BARNES L-17 FD 3/4 PINCHED PIPE & REFERENCED SAME.
 ON LINE E/W FENCE & WEST OF N/S FENCE LINE. 3.28'
 NORTHEASTERLY OF FD 3/4" ROD. FD PINCHED PIPE THAT
 ELY PLACED & IRON PIN THAT LEE PLACED. ACCEPTED FD
 PINCHED PIPE RATHER THAN IRON PIN. I ACCEPTED THE
 PIPE BECAUSE IT WAS PLACED BEFORE THE PIN, THE PIN IS
 IN HARMONY WITH OCCUPATION AND THE DIFFERENCE
 BETWEEN THE POSITION THAT AS DETERMINED FOR A LOST
 COR IS TOO TRIVIAL. I BELIEVE THE PIN BEST REPRESENTS
 THE POSITION BY OBLITERATED EVIDENCE LOCATION.
- 1991 WOODMAN VOL 6 PG 418 NOO-10-31W 2651.09 TO NW COR
 SEC 10, NB9-22-27E 2723.81 TO CENTER OF SEC 14, NB9-
 22-27E 5447.77 TO E 1/4 COR SEC 14.
- 2001 LATHROP #7935 FD PIPE, NOO-10-15W 2650.75 TO PK @ NW
 COR SEC 14.
- 2007 RIESOP GSM VOL 31 PG 12 FD 1" PINCHED PIPE. NB9-30-
 04E 2723.98 TO SET REROD @ CENTER OF SEC 14, SB9-30-
 04E 5448.14 TO FD HARRISON C.I. MON @ E 1/4 COR SEC
 14

FD PINCHED PIPE ON NORTH FACE OF FENCE POST. FD NORTH & SE
REFERENCE PIPE. E/W FENCE LINE IS GONE.

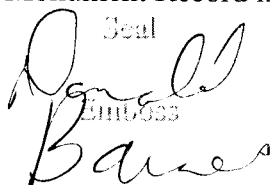
C) Was the corner restored through acceptance of (1) an obliterated evidence location, or, (2) a found
perpetuated location?

ACCEPTED FD PINCHED PIPE.

D) Describe any material discrepancy between the location of the corner as restored or reestablished
and the location of that corner as previously restored or reestablished by distance and direction. Show
the discrepancy on the plan view drawing under (a), above. Show the distances between the corner as
previously restored or reestablished and (1) the corner as restored or reestablished, and (2) to at least 4
of the witness monuments shown on the drawing in (a), above.

I USED THE RECORD DISTANCES TO COMPUTE THE POSITION OF THE
RECORD SW REROD. THIS POSITION IS IN HARMONY WITH LEE'S
1989 CALL DISTANCES TO THE SW & NW CORNERS OF SEC 14. IT IS
ALSO CLOSE TO A LINE BETWEEN THE NW & SW CORNERS OF SEC
14. FROM THE SW COR SEC 14 TO THE COMPUTED POSITION OF THE
REC 3/4 REROD IS NO-03-36E 2654.6X. THE COMPUTED POSTION OF
THIS TIE TO THE NW COR OF SEC 14 IS NO-04-22E 2653.9X WHICH
IS 0.3X' OFF A LINE BETWEEN THE SW & NW CORNERS OF SEC 14.
THE PINCHED PIPE IS 0.91' OFF A LINE BETWEEN THE SW & NW
CORNERS OF SEC 14. IT IS NO-02-48E 2650.83 TO THE NW COR OF
SEC 14 & SO-05-10W 2657.68 TO THE SW COR OF SEC 14.

I, Donald Barnes, hereby certify that the corner location as identified by the corner code index
was determined by me under my direction and control and that this U.S. Public Land Survey
Monument Record is correct and complete to the best of my knowledge and belief.

Seal

 Donald Barnes

4-9-2010

SHEET 1 OF 2

CORNER CODE L-17(1)

A.E. 7.08 REQUIREMENT

W 1/4 COR
SEC 14
PORTER TWP
T4N R11E

1991 BARNES Z-17

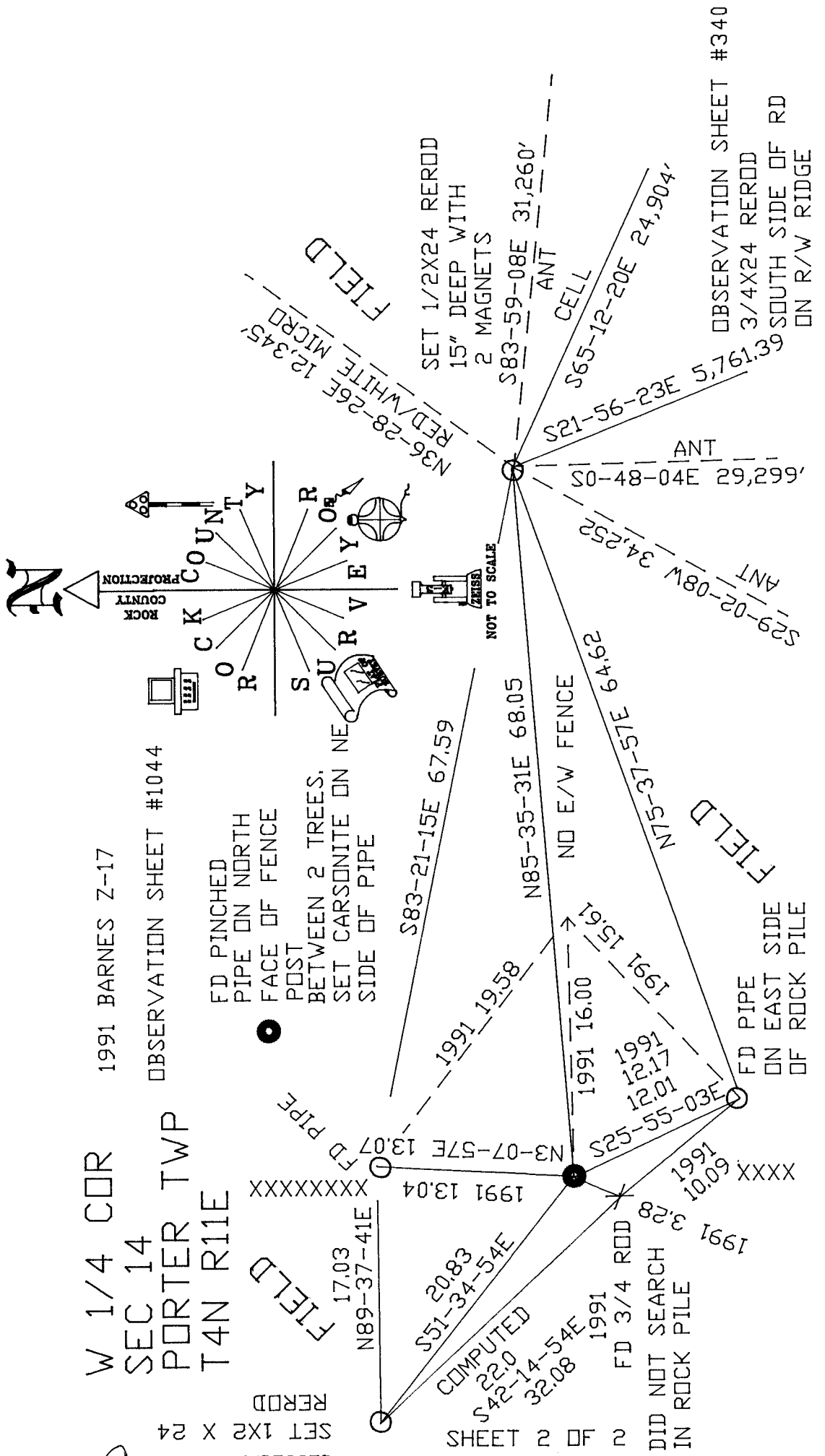
OBSERVATION SHEET #1044

SET 1X2 X 24
RERDD

Donald Barnes

4-9-2010

EMBOSSED SEAL



L-17(1)