

Paper weight-110# (minimum)

Black nonfading ink required

U.S. PUBLIC LAND SURVEY MONUMENT RECORD

For Public Land Survey Corners In:

WI ADMINISTRATIVE CODE A-E 7.08 REQUIREMENT

T. 4 N. R. 11 E. 4th P.M.

REV 10/23/2004

USMONREC.DWG

CORNER CODE INDEX

PORTER TWP

ROCK COUNTY WI

IF AVAILABLE

ROCK COUNTY COORDINATES PREFERRED

A	1	2	3	4	5	6	7	8	9	10	11	12	13	14	15	16	17	18	19	20	21	22	23	24	25	A
B		6				5				4				3				2			1					B
C																										C
D																										D
E																										E
F																										F
G																										G
H																										H
J																										J
K																										K
L																										L
M																										M
N																										N
O																										O
P																										P
Q																										Q
R																										R
S																										S
T																										T
U																										U
V																										V
W																										W
X																										X
Y																										Y
Z																										Z

North _____ Elev. _____

East _____

Hor. Datum _____ Vert. Datum _____

LATITUDE _____ ELLIPS. HT. _____

LONGITUDE _____

NAD83(91) _____ NETWORK ADJ. YR _____

GPS (X) _____ TRAVERSE (X) _____

BASED ON THE FOLLOWING CONTROL:

1 2 3 4 5 6 7 8 9 10 11 12 13 14 15 16 17 18 19 20 21 22 23 24 25
PLACE MONUMENT SYMBOL AT PROPER LOCATION ON ABOVE INDEX

CORNER MONUMENT

WITNESS MONUMENT

(a)

BEARINGS ARE BASED ON: _____

FIELD BOOK _____ PAGE # _____

SHEET 1 OF 4

SHOW A PLAN VIEW DRAWING DEPICTING THE CORNER MONUMENT AND SURROUNDING PHYSICAL FEATURES, INCLUDING THE EXCAVATION AREA AND DEPTH.

PLANNING & ZONING COMMITTEE ADOPTED THIS FORM ON 12/2/1982

CORNER CODE J-17(1)

PO549 SECORSEC10

(B) Describe any record evidence, monument evidence, occupational evidence, testimonial evidence or any other material evidence you considered, and whether the monument was found or placed.

1833 HARRISON (OCT 29TH) T4N R11E 4TH MER. NORTH
BET. 14 & 15
667.26 BROOK 3.3' CRS N.E.
2640.0 QUARTER SEC COR.
5280.0 POST & RAISED MOUND OF EARTH & SOD
SET COR TO SECS 10,11,14, 15
MARKED POST & RAISED MOUND OF
EARTH & SOD
LAND ROLLING 1ST RATE PRAIRIE GROWTH
GRASS & WEEDS

1833 HARRISON (OCT 31ST) T4N R11E 4TH MER. EAST ON RAND.
BET. 11 & 14
495.0 LEAVE PRAIRIE & ENTER TIMBER
2178.0 CAT-FISH CRK SET MEANDER POST
2482.26 LEFT CAT-FISH CRS S SET MEANDER POST
2640.0 TEMPY 1/4 SEC COR
5214.0 ENTER PRAIRIE
5332.80 INT. E BDY 16.5' NORTH OF POST
LAND ROLLING 2ND RATE RED, BURR & WHITE
OAK TIMBER
WEST COR. WEST BETW. SECS 11 & 14
2640.0 QUARTER SEC. COR {WHITE OAK 8 S60W
39.60'
2850.54 CAT-FISH SET MEANDER POST ON A RED OAK
10 IN DIAM.
3154.80 LEAVE CAT-FISH WHITE OAK 14 S88W 6.6'
5332.80 SEC COR

1833 HARRISON (NOV 2ND) T4N R11E 4TH MER. EAST ON RAND.
BET. 10 & 15
2640.0 TEMPY 1/4 SEC COR.
5290.56 INT. E BDY 39.6' NORTH OF POST
LAND ROLLING 1ST RATE PRAIRIE GROWTH
GRASS & WEEDS
WEST COR. WEST BET 10 & 15
2645.28 QUARTER SEC COR. {SET POST & RAISED A
MOUND OF EARTH & SOD
5290.56 INT. SEC COR

1833 HARRISON (OCT 29TH) T4N R11E 4TH MER. NORTH
BET. 10 & 11
396.0 LEAVE PRAIRIE & ENTER TIMBER
2089.56 CAT-FISH CRK CRS S.E. SET MEANDER POST
BURR OAK 10 S24W 30.36'; WHITE OAK 24
S9E 97.68'
2367.42 LEAVE CAT-FISH SET MEANDER POST
RED OAK 12 S86E 52.80'
2640.0 QUARTER SEC COR. RED OAK 10 N71E
19.14'; WHITE OAK 10 N75W 27.06'
3828.0 CAT-FISH CRS S.W. SET MEANDER POST
4191.0 LEAVE CAT-FISH SET MEANDER POST
4806.78 A WESTERN BEND OF CAT-FISH SET MEANDER
POST
4950.0 LEFT SAME SET MEANDER POST
5280.00 INT. CAT-FISH SET COR TO SECS 2,3,10,11
& MEANDER POST BURR OAK 18 N61W
285.12'; RED OAK 12 S40W 415.80'
LAND ROLLING 2ND RATE AS BEFORE

1855 PORTER TWP RD REC BK 1 PG 6 & 7 BEGINNING AT THE 1/4
POST ON THE EAST LINE OF SEC 13 T4N R1E; THENCE
WEST ON THE CENTER LINE OF SEC 13; 4540.8'; THENCE
S6E 419.76'; THENCE S40W 396' DOWN A RAVINE; THENCE
NB2W 198' ACROSS THE CATFISH RIVER; THENCE N15W

Donald Baues
3/17/2009

- 770.88' TO THE CENTER LINE OF SEC 13; THENCE WEST ON SAID LINE 122' TO 1/4 POST ON WEST LINE OF SEC 13; THENCE WEST ON THE CENTER LINE OF SEC 14, 2640' TO CENTER OF SEC 14; THENCE NORTH ON THE N & S CENTER LINE OF SEC 14 2057.88' TO RIVER; THENCE N44W 808.5' TO NORTH LINE OF SEC 14; THENCE WEST ON THE NORTH LINE OF 14, 1897.5' TO NW COR OF 14, THENCE SOUTH 33'; THENCE WEST PARALLEL TO NORTH LINE OF SEC 15, 3960' TO RD RUNNING NORTH AND SOUTH THROUGH SEC 15; AND NOW THEREFORE WE THE SUPERVISORS " " DELCARE THE ABOVE DESCRIBED RD TO BE A PUBLIC HIGHWAY 66' WIDE " ". " " DECLARE THE ABOVE DESCRIBED ROAD TO BE A PUBLIC HIGHWAY 66' WIDE,
- 1886 RUGER VOL 2 PG 282. USED CORNER TO ESTABLISH THE S 1/4 CORNER OF SECTION 11. SHOWS 2722.50 FEET TO THE S 1/4 CORNER OF SECTION 11.
- 1953 ELY #13524 PLAT OF SURVEY. USED CORNER FOR A LARGE SURVEY IN SECTION 15 BUT HE DID NOT STATE ANYTHING ABOUT THE CORNER.
- 1965 BATTERMAN JR. VOL 4 PG 236 FOUND LIMESTONE 31X14X4 SURROUNDED BY HHS. SHOWS TIES. SHOWS 2645.30 TO THE N 1/4 CORNER OF SECTION 15.
- 1971 LEE VOL 4 PG 534 SHOWS 2654 TO W 1/4 COR OF SEC 11 AND 1878 TO SOUTH SIDE OF YAHARA RIVER. FOR REF VOL 4 PG 236
- 1971 COMBS PLAT OF SURVEY. FOUND A R/R SPIKE AT THE CORNER.
- 1973 COMBS #3584 & 3582 FD R/R
- 1973 COMBS CSM VOL 3 PG 178 FD PK & REF PIPES.
- 1989 LEE #12002 FD PK S89-37-00W TO PIPE @ N 1/4 COR SEC 15; S00-00-00E 2654.05 TO PIPE @ E 1/4 COR OF SEC 15.
- 1991 BARNES VOL 6 PG 412 FB#3 PG 27 FD R/R SPIKE S89-32-55W 2723.42 TO ALUM @ S 1/4 COR SEC 11, FD PK @ E 1/4 COR SEC 11
- 1991 WOODMAN VOL 6 PG 418 N89-13-40E 2725.50 TO N 1/4 COR SEC 14, S0-10-E 2651.09 TO W 1/4 COR SEC 14
- 1991 WOODMAN #11918 & #11921 FD RAILROAD SPIKE, N89-13-40E 2725.50 TO FD 4" DIA ALUM. MON @ N 1/4 COR SEC 14
- 1991 BARNES J-17 FD RR SPIKE & 2 REFERENCE PIPES. REFERENCED COR. IS EAST OF DRIVEWAY.
- 1993 KREBS CSM VOL 17 PG 59 FD R/R SPIKE 2644.64 TO FD PIPE @ S 1/4 COR SEC 10
- 1996 KREBS CSM VOL 20 PG 286 R/R SPIKE N0-03-31E 2656.92 TO CONC. MON @ W 1/4 COR SEC 11.
- 2000 LATHROP #7625 FD PK 2644.77 TO FD PIPE @ S 1/4 COR SEC 10
- 2001 LATHROP #14107 & #7935 PK N89-13-40E 2725.50 TO ALUM @ N 1/4 COR SEC 14, S00-10-15E 2650.75 TO PIPE @ W 1/4 COR SEC 14
- 2002 MARTY #14329, 14357, & 14358 FD PK NAIL, N00-11-10W 2664.70 TO CONC. MON/BRASS CAP @ E 1/4 COR SEC 10, S89-40-49W 2644.64 TO 2" IP @ S 1/4 COR SEC 10

Donald Barnes
3/17/2009

PO549 SECORSEC10

FD PK. RECORDS INDICATE THIS WAS PROBABLY PLACED BETWEEN 1996 AND 2000.

C) Was the corner restored through acceptance of (1) an obliterated evidence location, or, (2) a found perpetuated location?

OBSERVATIONS TO FD R/R SPIKE IN 1991 WERE INCLUDED IN TWP PROJECT ADJUSTMENT. THE ADJUSTMENT ALSO INCLUDED 2008 OBSERVATIONS TO FD PK AND REFERENCE MONUMENTS. BASED ON THE STATISTICAL DATA THE PK REPRESENTS THE LOCATION OF THE FD R/R AND THE STONE BATTERMAN FOUND IN 1965.

D) Describe any material discrepancy between the location of the corner as restored or reestablished and the location of that corner as previously restored or reestablished by distance and direction. Show the discrepancy on the plan view drawing under (a), above. Show the distances between the corner as previously restored or reestablished and (1) the corner as restored or reestablished, and (2) to at least 4 of the witness monuments shown on the drawing in (a), above.

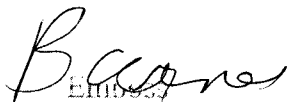
NONE

(E) Was the corner reestablished through lost corner proportionate methods? If so, show the method, including the directions and distances to other public land survey corners used as evidence or used for proportioning the corner location.

NO

I, **Donald Barnes**, hereby certify that the corner location as identified by the corner code index was determined by me under my direction and control and that this U.S. Public Land Survey Monument Record is correct and complete to the best of my knowledge and belief.


Seal

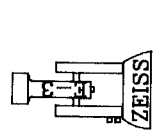
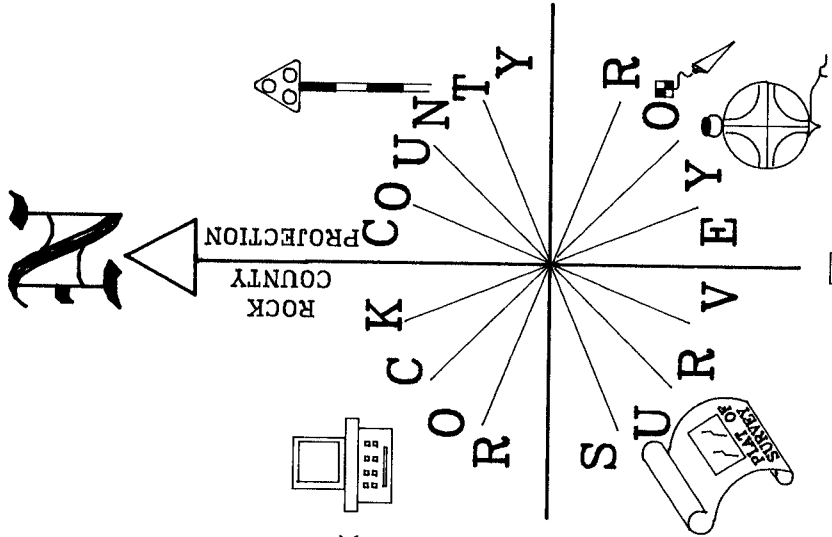

Embassy

SHEET 3 OF 4

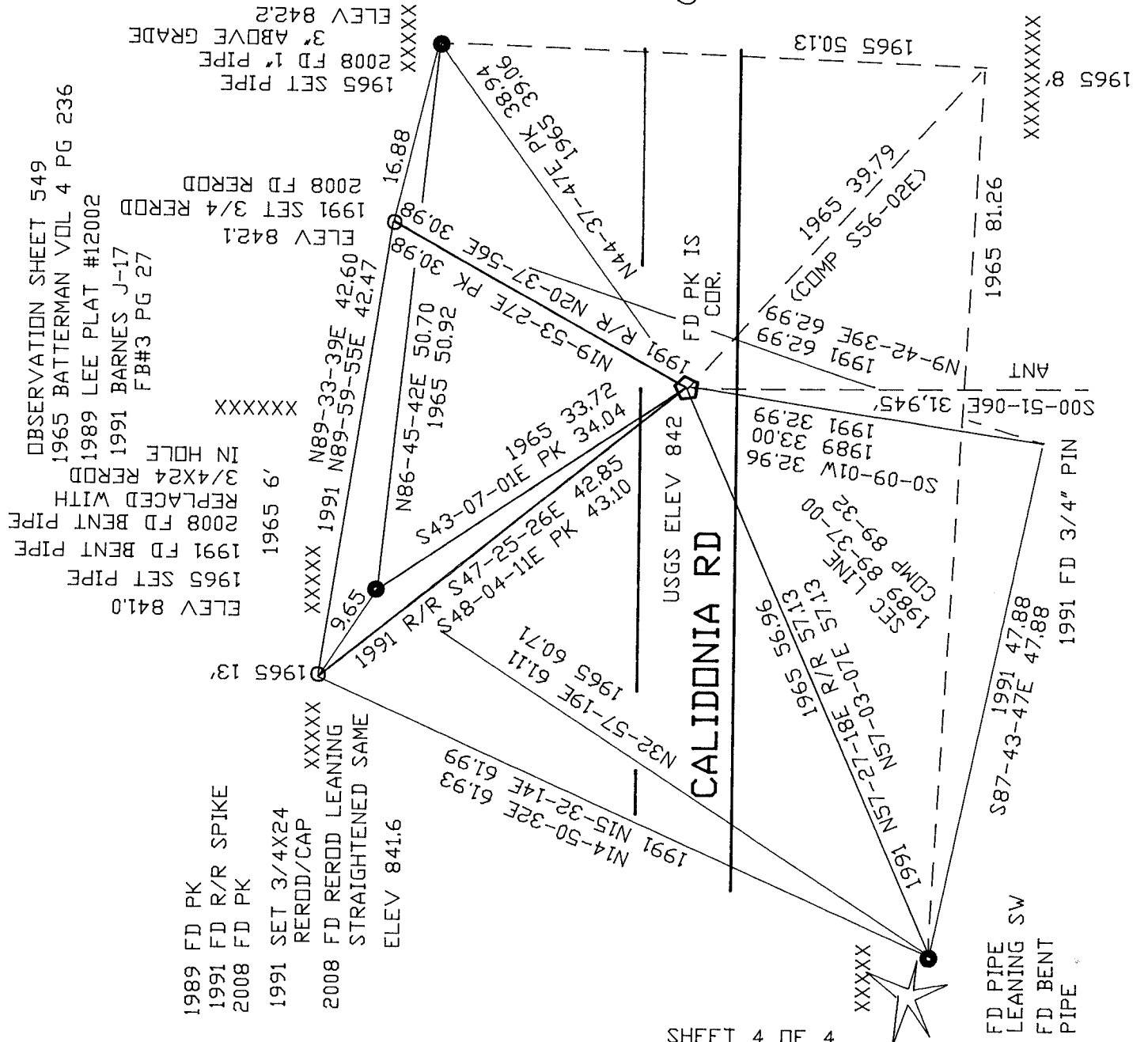
3/17/2009

CORNER CODE **J-17(1)**

A.E. 7.08 REQUIREMENT



NOT TO SCALE
 NE COR
 SEC 15
 PORTER TWP
 T4N R11E



1989 FD PK
 1991 FD R/R SPIKE
 2008 FD PK
 1991 SET 3/4X24
 REROD/CAP
 2008 FD REROD LEANING
 STRAIGHTENED SAME
 ELEV 841.6
 XXXXX
 1965 6'
 1991 FD BENT PIPE
 2008 FD BENT PIPE
 REPLACED WITH
 3/4X24 REROD
 IN HOLE
 1991 BARNES J-17
 FB#3 PG 27
 1989 LEE PLAT #12002
 1965 BATTERMAN VOL 4 PG 236
 OBSERVATION SHEET 549

1965 SET PIPE
 2008 FD 1" PIPE
 3" ABOVE GRADE
 ELEV 842.2
 XXXXX

SHEET 4 OF 4

EMBOSSED SEAL
Donald Barnes
 3-17-2009

J-17(1)

2008 FD PIPE
 LEANING SW
 1991 FD BENT
 PIPE