

Paper weight-110# (minimum)

Black nonfading ink required

# U.S. PUBLIC LAND SURVEY MONUMENT RECORD

For Public Land Survey Corners In:  
T. 4 N. R. 11 E. 4th P.M.  
CORNER CODE INDEX

WI ADMINISTRATIVE CODE A-E 7.08 REQUIREMENT  
REV 10/23/2004 USMONREC.DWG

|   |   |   |   |   |   |   |   |   |   |    |    |    |    |    |    |    |    |    |    |    |    |    |    |    |    |   |
|---|---|---|---|---|---|---|---|---|---|----|----|----|----|----|----|----|----|----|----|----|----|----|----|----|----|---|
| A | 1 | 2 | 3 | 4 | 5 | 6 | 7 | 8 | 9 | 10 | 11 | 12 | 13 | 14 | 15 | 16 | 17 | 18 | 19 | 20 | 21 | 22 | 23 | 24 | 25 | A |
| B |   |   |   |   |   |   |   |   |   |    |    |    |    |    |    |    |    |    |    |    |    |    |    |    |    | B |
| C |   |   |   |   |   |   |   |   |   |    |    |    |    |    |    |    |    |    |    |    |    |    |    |    |    | C |
| D |   |   |   |   |   |   |   |   |   |    |    |    |    |    |    |    |    |    |    |    |    |    |    |    |    | D |
| E |   |   |   |   |   |   |   |   |   |    |    |    |    |    |    |    |    |    |    |    |    |    |    |    |    | E |
| F |   |   |   |   |   |   |   |   |   |    |    |    |    |    |    |    |    |    |    |    |    |    |    |    |    | F |
| G |   |   |   |   |   |   |   |   |   |    |    |    |    |    |    |    |    |    |    |    |    |    |    |    |    | G |
| H |   |   |   |   |   |   |   |   |   |    |    |    |    |    |    |    |    |    |    |    |    |    |    |    |    | H |
| J |   |   |   |   |   |   |   |   |   |    |    |    |    |    |    |    |    |    |    |    |    |    |    |    |    | J |
| K |   |   |   |   |   |   |   |   |   |    |    |    |    |    |    |    |    |    |    |    |    |    |    |    |    | K |
| L |   |   |   |   |   |   |   |   |   |    |    |    |    |    |    |    |    |    |    |    |    |    |    |    |    | L |
| M |   |   |   |   |   |   |   |   |   |    |    |    |    |    |    |    |    |    |    |    |    |    |    |    |    | M |
| N |   |   |   |   |   |   |   |   |   |    |    |    |    |    |    |    |    |    |    |    |    |    |    |    |    | N |
| O |   |   |   |   |   |   |   |   |   |    |    |    |    |    |    |    |    |    |    |    |    |    |    |    |    | O |
| P |   |   |   |   |   |   |   |   |   |    |    |    |    |    |    |    |    |    |    |    |    |    |    |    |    | P |
| Q |   |   |   |   |   |   |   |   |   |    |    |    |    |    |    |    |    |    |    |    |    |    |    |    |    | Q |
| R |   |   |   |   |   |   |   |   |   |    |    |    |    |    |    |    |    |    |    |    |    |    |    |    |    | R |
| S |   |   |   |   |   |   |   |   |   |    |    |    |    |    |    |    |    |    |    |    |    |    |    |    |    | S |
| T |   |   |   |   |   |   |   |   |   |    |    |    |    |    |    |    |    |    |    |    |    |    |    |    |    | T |
| U |   |   |   |   |   |   |   |   |   |    |    |    |    |    |    |    |    |    |    |    |    |    |    |    |    | U |
| V |   |   |   |   |   |   |   |   |   |    |    |    |    |    |    |    |    |    |    |    |    |    |    |    |    | V |
| W |   |   |   |   |   |   |   |   |   |    |    |    |    |    |    |    |    |    |    |    |    |    |    |    |    | W |
| X |   |   |   |   |   |   |   |   |   |    |    |    |    |    |    |    |    |    |    |    |    |    |    |    |    | X |
| Y |   |   |   |   |   |   |   |   |   |    |    |    |    |    |    |    |    |    |    |    |    |    |    |    |    | Y |
| Z |   |   |   |   |   |   |   |   |   |    |    |    |    |    |    |    |    |    |    |    |    |    |    |    |    | Z |

PORTER TWP  
ROCK COUNTY WI

IF AVAILABLE  
ROCK COUNTY COORDINATES PREFERRED

North \_\_\_\_\_ Elev. \_\_\_\_\_

East \_\_\_\_\_

Hor. Datum \_\_\_\_\_ Vert. Datum \_\_\_\_\_

LATITUDE \_\_\_\_\_ ELLIPS. HT. \_\_\_\_\_

LONGITUDE \_\_\_\_\_

NAD83(91) \_\_\_\_\_ NETWORK ADJ. YR \_\_\_\_\_

GPS (X) \_\_\_\_\_ TRAVERSE (X) \_\_\_\_\_

BASED ON THE FOLLOWING CONTROL:

◆ CORNER MONUMENT      ○ WITNESS MONUMENT

BEARINGS ARE BASED ON: \_\_\_\_\_

FIELD BOOK \_\_\_\_\_ PAGE # \_\_\_\_\_

SHEET 1 OF 3

SHOW A PLAN VIEW DRAWING DEPICTING THE CORNER MONUMENT AND SURROUNDING PHYSICAL FEATURES, INCLUDING THE EXCAVATION AREA AND DEPTH.

PLANNING & ZONING COMMITTEE ADOPTED THIS FORM ON 12/2/1982

CORNER CODE G-17/11

P0538

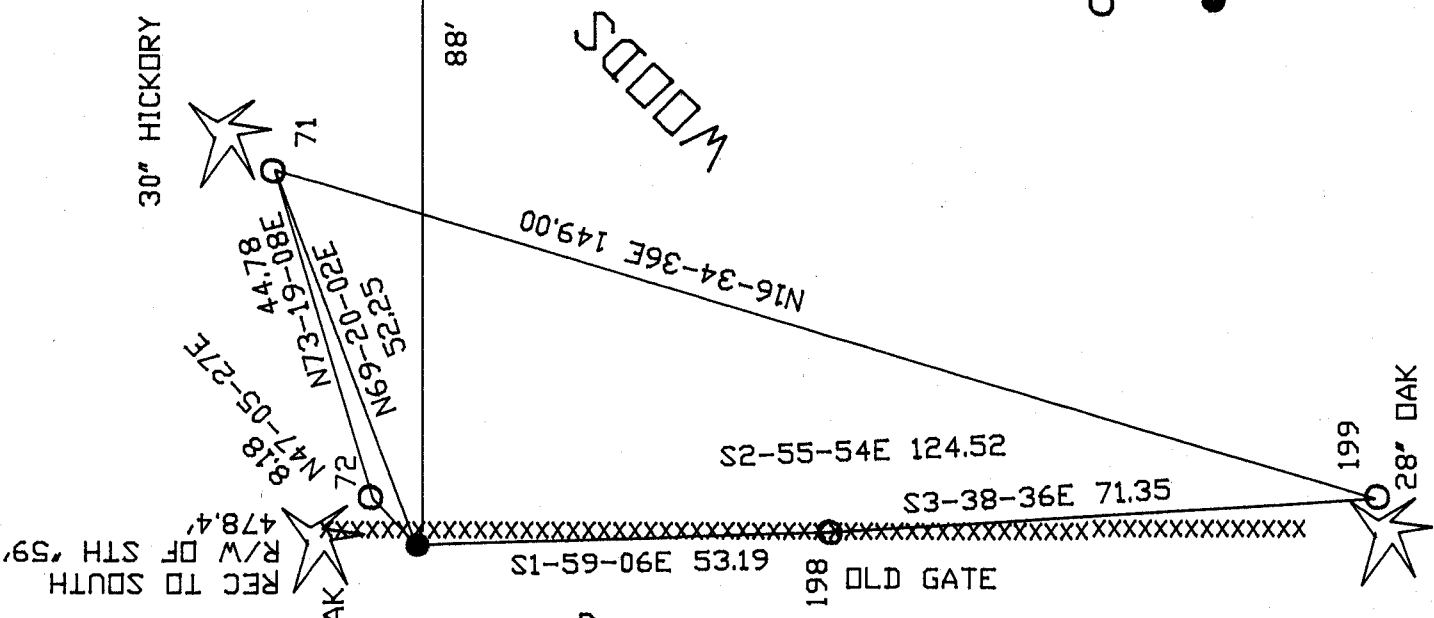
E1/4CORSEC10

(B) Describe any record evidence, monument evidence, occupational evidence, testimonial evidence or any other material evidence you considered, and whether the monument was found or placed.

- 1833 HARRISON (OCT 29TH) T4N R11E 4<sup>TH</sup> MER. NORTH  
BET. 10 & 11
- 396.0 LEAVE PRAIRIE & ENTER TIMBER
  - 2089.56 CAT-FISH CRK CRS S.E. SET MEANDER POST  
BURR OAK 10 S24W 30.36'; WHITE OAK 24  
S9E 97.68'
  - 2367.42 LEAVE CAT-FISH SET MEANDER POST  
RED OAK 12 S86E 52.80'
  - 2640.0 QUARTER SEC COR. RED OAK 10 N71E  
19.14'; WHITE OAK 10 N75W 27.06'
  - 3828.0 CAT-FISH CRS S.W. SET MEANDER POST
  - 4191.0 LEAVE CAT-FISH SET MEANDER POST
  - 4806.78 A WESTERN BEND OF CAT-FISH SET MEANDER  
POST
  - 4950.0 LEFT SAME SET MEANDER POST
  - 5280.00 INT. CAT-FISH SET COR TO SECS 2,3,10,11  
& MEANDER POST BURR OAK 18 N61W  
285.12'; RED OAK 12 S40W 415.80'  
LAND ROLLING 2<sup>ND</sup> RATE AS BEFORE
- 1885 RUGER VOL 2 PG 292 FD OLD STAKE SET IN PLACE A  
LIMESTONE 31X14X4 1/2 SURROUNDED IT BY 4 HH.  
2654.52 TO NE COR SEC 10, 5290.56 TO W 1/4 COR SEC 10
- 1886 RUGER VOL 2 PG 282 STATES NOTHING ABOUT MON. VAR 6-  
30 2692.47 TO LIMESTONE 15X8X3 @ CENTER SEC 11, VAR  
6-30 5436.42 TO E 1/4 COR SEC 11
- 1971 LEE VOL 4 PG 534 FD LS 13X6X3 ON N. SIDE OF FENCE  
POST WITH W.O. TREE ON E. SIDE SET CONC. MON. WITH  
BRASS CAP IN PLACE 478.4 SOUTH OF SOUTH R/W OF STH  
59, 610.7 SOUTH TO CUT X IN CONC. BASE OF FENCE POST  
ON LINE SOUTH ON NORTH SIDE OF YAHARA RIVER, 2654  
TO SW COR SEC 11
- 1973 COMBS #3584 & 3582 FD CONC. MON. NORTH 478.40  
ALONG SEC LINE TO PIPE, SOUTH 610.70 TO PIPE
- 1992 SCHROEDER #11615 STATES NOTHING ABOUT MON. NORTH  
478.40 TO PIPE ON ROW LINE, SOUTH 610.70 TO PIPE @  
MEANDER CORNER. USED SW COR SEC 11 TO ESTABLISH  
LINE OF SW 1/4 SEC 11.
- 1996 KREBS CSM VOL 20 PG 286 CONC. MON. 889-57-00E  
ALONG E/W 1/4 LINE, 800-03-31W 2656.92 TO R/R @ SW  
COR SEC 11
- 2001 BARNES G-17 FD CONC. MON/BRASS CAP & CARBONITE  
POST. REFERENCED SAME. 88' WEST OF WEST EDGE DR TO  
HSE #8527. WEST OF N/S FENCE LINE.
- 2002 MARTY #14329, 14358, & 14357 CONCRETE MON WITH  
BRASS CAP, 800-11-10E 2664.70 TO PK @ SE COR SEC 10,  
889-48-49W 5282.96 TO COMPUTED POSITION FROM FD  
TIES @ W 1/4 COR SEC 10, 889-48-49W 2622.22 TO SET 1  
1/4 ROD @ CENTER OF SEC 10
- 2010 NORTHROP PROPOSED CSM. MAG NAIL N00-11-10W  
2657.10 TO ALUM MON @ E 1/4 COR SEC 10. CALLS FOR  
THE CORNER AS 547.26 S0-11-10E OF THE CENTER OF STH  
59

*Donald Barnes*  
Apr 28, 2010

PORTER TWP  
W 1/4 COR  
SEC 11



FD CONC.  
MON./ BRASS  
CAP &  
CARSONITE  
POST

*D. Baines*  
EMBOSSED  
SEAL  
APR 28, 2010

3 OF 3  
G-17(1)

ASPHALT DRIVEWAY  
HOUSE # 8527

