

Paper weight-110# (minimum)

Black nonfading ink required

U.S. PUBLIC LAND SURVEY MONUMENT RECORD

For Public Land Survey Corners In:
T. 4 N. R. 11 E. 4th P.M.
CORNER CODE INDEX

WI ADMINISTRATIVE CODE A-E 7.08 REQUIREMENT
REV 10/23/2004 USMONREC.DWG

PORTER TWP
ROCK COUNTY WI

IF AVAILABLE
ROCK COUNTY COORDINATES PREFERRED

A	1	2	3	4	5	6	7	8	9	10	11	12	13	14	15	16	17	18	19	20	21	22	23	24	25	A
B		6			5			4			3			2			1									B
C																										C
D																										D
E																										E
F																										F
G																										G
H																										H
J																										J
K																										K
L																										L
M																										M
N																										N
O																										O
P																										P
Q																										Q
R																										R
S																										S
T																										T
U																										U
V																										V
W																										W
X																										X
Y																										Y
Z																										Z

North _____ Elev. _____

East _____

Hor. Datum _____ Vert. Datum _____

LATITUDE _____ ELLIPS. HT. _____

LONGITUDE _____

NAD83(91) _____ NETWORK ADJ. YR _____

GPS (X) _____ TRAVERSE (X) _____

BASED ON THE FOLLOWING CONTROL:

1 2 3 4 5 6 7 8 9 10 11 12 13 14 15 16 17 18 19 20 21 22 23 24 25
PLACE MONUMENT SYMBOL **◆** AT PROPER
LOCATION ON ABOVE INDEX

◆ CORNER MONUMENT

○ WITNESS MONUMENT

BEARINGS ARE BASED ON: _____

FIELD BOOK _____ PAGE # _____

SHEET 1 OF 3

SHOW A PLAN VIEW DRAWING DEPICTING THE CORNER MONUMENT AND SURROUNDING
PHYSICAL FEATURES, INCLUDING THE EXCAVATION AREA AND DEPTH.

PLANNING & ZONING COMMITTEE ADOPTED THIS FORM ON 12/2/1982

CORNER CODE 121(1)

P0599 EY4 COR SEC 26
(B) Describe any record evidence, monument evidence, occupational evidence, testimonial evidence or any other material evidence you considered, and whether the monument was found or placed.

1833 HARRISON (OCT) T4N R11E 4TH MER. NORTH
BET. 26 & 25

2640.0 QUARTER SEC COR SET A POST & RAISED
MOUND

5280.0 SET COR TO SECS 23,24,25,26
MARKED POST & RAISED A MOUND OF
EARTH & SOD. LAND ROLLING 1ST RATE
PRAIRIE SOIL HEAVY & GOOD. GROWTH
GRASS & WEEDS.

- 1847 PORTER TWP RD REC BK 1 PG 1 BEGINNING AT THE 1/4 POST
ON THE SEC LINE BETWEEN SECTIONS 23, & 24 T4N
R11E EAST; THENCE SOUTH ON THE SEC LINE TWO & HALF
MILES TO THE SOUTH WEST COR OF SEC 36 OF TOWN AND
RANGE. THE LENGTH OF SAID ROAD IS 2 1/2 MILES.
COURSES GIVEN ACORDING TO THE TRUE MERIDIAN.
VARIATION OF NEEDLE 7 3/4. WE DO HEREBY CERTIFY THAT
THE ABOVE ROAD WAS LAID AND SURVEYED ACCORDING TO
OUR ORDERS & DIRECTIONS. JUNE 28 1847
- 1878 RUGER VOL 2 PG 242 FD STONE ON COR. USED TO
SUBDIVIDE SEC 26.
- 1977 BARNES VOL 5 PG 267 2611.9 TO NE COR SEC 25, 2650.1
TO SE COR SEC 25
- 1977 BARNES VOL 5 PG 268 DUG & FD NOTHING. SET A SINGLE
PROPORTION DISTANCE ON LINE WITH NW & SW CORNERS
OF SEC 25. SET ALUM. & REFERENCED. 2 EAST OF CENTER
OF PVMT. SHORT PK TIES; 15.12 TO NW & 14.94 TO NE.
5 SOUTH OF E/W FENCE LINE ON EAST SIDE OF RD.
- 1977 LEE CSM 6-346 CI
- 2005 LATHROP CSM VOL 29 PG 135 ALUM. 2652.86 TO ALUM @
SW COR SEC 25.
- 2007 RIESOP T-21 NAIL WAS SET ON STRAIGHT LINE BETWEEN NW
AND SW CORNERS AS PER 1977 MONUMENT RECORD BY
DON BARNES. POSITION MATCHES ORIGINAL TIE TO PIPE FD
AT SE CORNER OF TIES. NAIL IS ALSO OVER POSITION OF
MONUMENT USING LOCATOR, BUT CORNER NOT
UNCOVERED AS IT SOUNDS AND APPEARS TO BE AT LEAST
ONE FOOT UNDER NEW BITUMINOUS PAVING. ADDITIONAL
TIES WERE SET AS SHOWN. PK NAIL SET, FALLS 2 EAST OF
PVMT CENT. REFERENCED SAME.
- 2007 RIESOP CSM VOL 31 PG 218 PK SET FROM TIES OVER
ALUM. MON. UNDER BLACKTOP. SDD-22-32E 2652.97 TO
ALUM @ SW COR SEC 25.

I USED MY 1977 OBSERVATIONS.

Don Barnes
3-18-2009

SHEET 1 OF 3

CORNER CODE T-21(1)

PO599

E1/4CORSEC26

PO599

E1/4CORSEC26

C) Was the corner restored through acceptance of (1) an obliterated evidence location, or, (2) a found perpetuated location?

ACCEPTED PERPETUATED ALUM. MON.

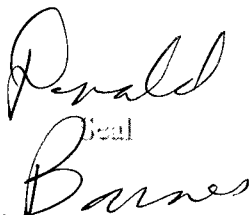
D) Describe any material discrepancy between the location of the corner as restored or reestablished and the location of that corner as previously restored or reestablished by distance and direction. Show the discrepancy on the plan view drawing under (a), above. Show the distances between the corner as previously restored or reestablished and (1) the corner as restored or reestablished, and (2) to at least 4 of the witness monuments shown on the drawing in (a), above.

NONE

(E) Was the corner reestablished through lost corner proportionate methods? If so, show the method, including the directions and distances to other public land survey corners used as evidence or used for proportioning the corner location.

YES. IN 1977.

I, **Donald Barnes**, hereby certify that the corner location as identified by the corner code index was determined by me under my direction and control and that this U.S. Public Land Survey Monument Record is correct and complete to the best of my knowledge and belief.

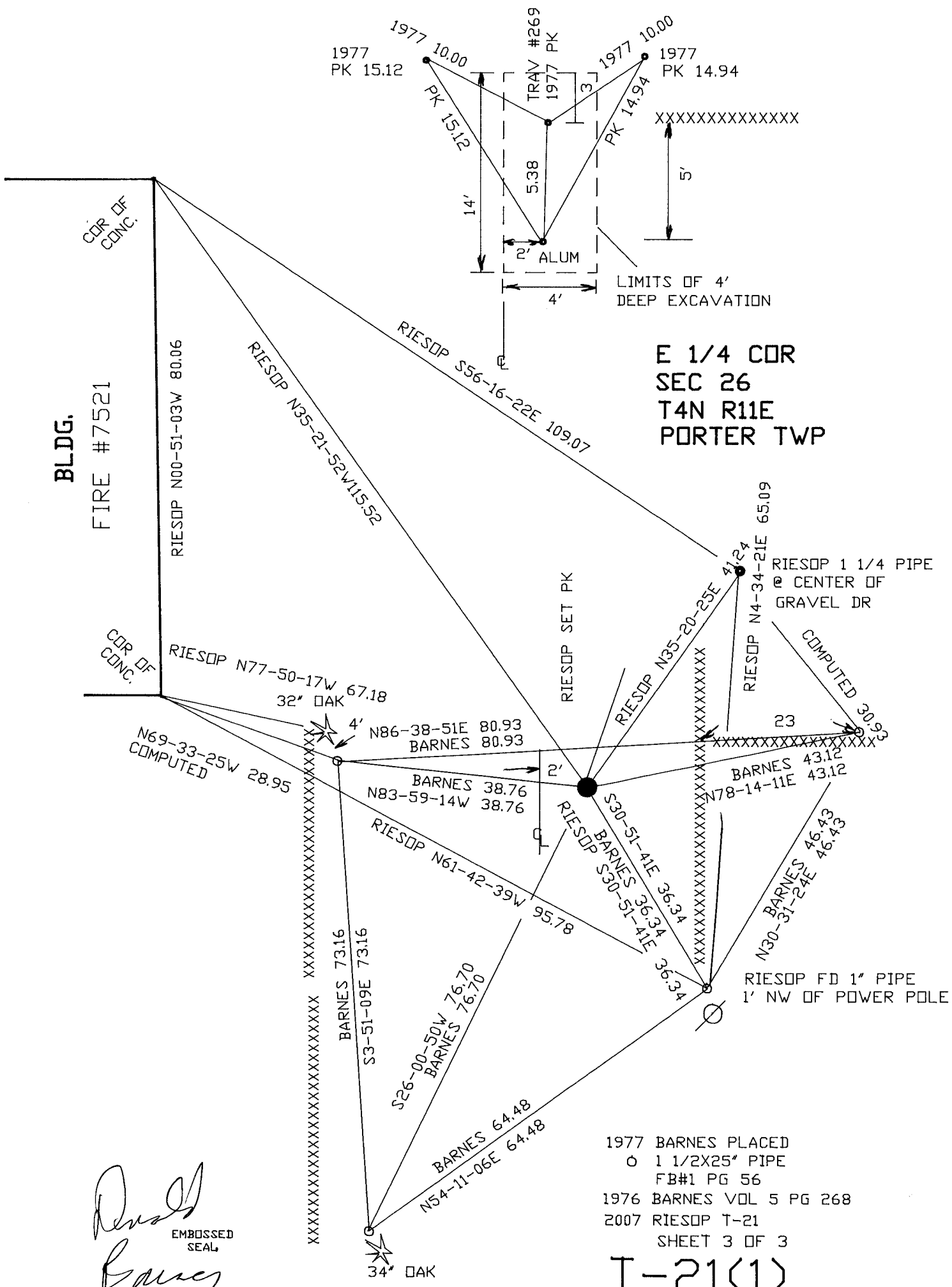

Donald
Barnes
Emboss

3-18-2009

SHEET 2 OF 3

CORNER CODE T-21(1)

A.E. 7.08 REQUIREMENT



E 1/4 CDR
 SEC 26
 T4N R11E
 PORTER TWP

BLDG.

FIRE #7521

CDR OF CONC.
 RIESOP N00-51-03W 80.06
 RIESOP N35-21-52W115.52
 RIESOP S56-16-22E 109.07
 RIESOP N77-50-17W 67.18
 32" OAK
 4'

N69-33-25W 28.95
 COMPUTED

N86-38-51E 80.93
 BARNES 80.93

BARNES 38.76
 N83-59-14W 38.76

RIESOP N61-42-39W 95.78

BARNES 73.16
 S3-51-09E 73.16

S26-00-50W 76.70
 BARNES 76.70

BARNES 64.48
 N54-11-06E 64.48

34" OAK

RIESOP SET PK

RIESOP N35-20-25E
 RIESOP N4-34-21E 65.09

RIESOP 1 1/4 PIPE
 @ CENTER OF
 GRAVEL DR

COMPUTED 30.93
 23

BARNES 43.12
 N78-14-11E 43.12

N30-BARNES 46.43
 N30-31-24E 46.43

RIESOP FD 1" PIPE
 1' NW OF POWER POLE

1977 BARNES PLACED
 O 1 1/2X25" PIPE
 FB#1 PG 56
 1976 BARNES VOL 5 PG 268
 2007 RIESOP T-21
 SHEET 3 OF 3

T-21(1)

D. J. [Signature]
 EMBOSSED SEAL
[Signature]
 3-18-2009