

Paper weight-110# (minimum)

Black nonfading ink required

U.S. PUBLIC LAND SURVEY MONUMENT RECORD

For Public Land Survey Corners In:
T. 4 N. R. 11 E. 4th P.M.
CORNER CODE INDEX

WI ADMINISTRATIVE CODE A-E 7.08 REQUIREMENT
REV 10/23/2004 USMONREC.DWG

PORTER TWP
ROCK COUNTY WI

IF AVAILABLE
ROCK COUNTY COORDINATES PREFERRED

A	1	2	3	4	5	6	7	8	9	10	11	12	13	14	15	16	17	18	19	20	21	22	23	24	25	A
B		6				5				4				3			2			1						B
C																										C
D																										D
E																										E
F																										F
G																										G
H																										H
J																										J
K																										K
L																										L
M																										M
N																										N
O																										O
P																										P
Q																										Q
R																										R
S																										S
T																										T
U																										U
V																										V
W																										W
X																										X
Y																										Y
Z																										Z

North _____ Elev. _____

East _____

Hor. Datum _____ Vert. Datum _____

LATITUDE _____ ELLIPS. HT. _____

LONGITUDE _____

NAD83(91) _____ NETWORK ADJ. YR _____

GPS (X) _____ TRAVERSE (X) _____

BASED ON THE FOLLOWING CONTROL:

PLACE MONUMENT SYMBOL **◆** AT PROPER LOCATION ON ABOVE INDEX

◆ CORNER MONUMENT

○ WITNESS MONUMENT

BEARINGS ARE BASED ON: -----

FIELD BOOK _____ PAGE # _____

SHEET 1 OF 3

SHOW A PLAN VIEW DRAWING DEPICTING THE CORNER MONUMENT AND SURROUNDING PHYSICAL FEATURES, INCLUDING THE EXCAVATION AREA AND DEPTH.

PLANNING & ZONING COMMITTEE ADOPTED THIS FORM ON 12/2/1982

CORNER CODE V-21(1)

PO611

SECORSEC26

(B) Describe any record evidence, monument evidence, occupational evidence, testimonial evidence or any other material evidence you considered, and whether the monument was found or placed.

1833 HARRISON (OCT 29TH) T4N R11E 4TH MER. NORTH
 BET. 35 & 36 (VAR B-40E)

1618.98 TO A BURR OAK 18 IN DIAM
 2640.0 QUARTER SEC COR. {BURR OAK 18 N74E
 23.76'; BURR OAK 18 S86W 10.56'
 {BURR OAK 18; BURR OAK 18} MARKED
 4154.70 BURR OAK 10 IN DIAM. & ENTER PRAIRIE
 4933.50 TRAIL CRS N.E.
 5280.0 SET A POST & RAISED A MOUND OF EARTH &
 SOD FOR COR TO SECS 25,26,35,36 ON LEVEL
 PRAIRIE
 LAND 1ST 3/4 OF THE GENTLY ROLLING 2ND RATE
 WITH A HANDSOME GROVE OF BURR OAK
 TIMBER

1833 (OCT 29) HARRISON EAST ON RAND BET SECS 25 & 36 T4N
 R11E

379.5 TRAIL CRS NE
 2640 TEMPY 1/4 SEC COR
 5332.8 INT E BDY IN E EDGE OF PRAIRIE 26.4' SOUTH
 OF POST LAND GENTLY ROLLING 1ST RATE
 PRAIRIE GROWTH GRASS & WEEDS
 WEST BET SECS 25 & 36

2666.4 QUARTER SEC. COR. {SET A POST AND RAISED
 A MOUND ON ROLLING GROUND
 5332.8 SEC COR

1833 HARRISON (OCT 29TH) T4N R11E 4TH MER. NORTH
 BET. 25 & 26

2640.0 QUARTER SEC COR. SET A POST & RAISED
 MOUND
 5280.0 SET COR TO SECS 23,24,25, 26 MARKED POST
 & RAISED A MOUND OF EARTH & SOD LEVEL
 ROLLING 1ST RATE PRAIRIE SOIL HEAVY &
 GOOD
 GROWTH GRASS & WEEDS

1833 HARRISON (NOV) T4N R11E 4TH MER. EAST ON RANDOM
 BET 26 & 35

247.50 TRAIL CRS N.E.
 2640.0 TEMPY 1/4 SEC COR.
 3977.16 ENTER PRAIRIE
 4228.62 TRAIL NORTH
 5309.70 INT. EAST BDY 9.9' SOUTH OF POST LAND
 ROLLING 2ND RATE TIMBER ALL BURR OAK ?
 GRASS & WEEDS
 WEST COR WEST BET 26 & 35

1702.14 BURR OAK 12
 2654.85 QUARTER SEC COR BURR OAK 12 S70E
 25.74'; BURR OAK 15 S41W 27.06' BURR
 OAK 12; BURR OAK 15} MARKED
 3593.70 BURR OAK 8
 5309.70 SEC COR

1847 PORTER TWP RD REC BK 1 PG 1 BEGINNING AT THE 1/4 POST
 ON THE SEC LINE BETWEEN SECTIONS 23 & 24 T4N
 R11E EAST; THENCE SOUTH ON THE SEC LINE TWO & HALF
 MILES TO THE SOUTH WEST COR OF SEC 36 OF TOWN AND
 RANGE. THE LENGTH OF SAID ROAD IS 2 1/2 MILES.
 COURSES GIVEN ACORDING TO THE TRUE MERIDIAN.
 VARIATION OF NEEDLE 7-3/4. WE DO HEREBY CERTIFY THAT
 THE ABOVE ROAD WAS LAID AND SURVEYED ACCORDING TO
 OUR ORDERS & DIRECTIONS. JUNE 28 1847

SHEET 1 OF 3

Donald Bauer

CORNER CODE

V-21(1)

3-18-2009

P0611 SECORSEC26
 1854 PORTER TWP RD REC BK 1 PG 6 SURVEY OF A ROAD IN THE
 TOWN OF PORTER MADE ON 9TH DAY OF DEC 1854.
 BEGINNING 8.25' SOUTH OF THE SW COR OF SEC 25,
 T4NR11E; THENCE EAST PARALLEL TO THE SEC LINE, 1320';
 THENCE N88 -1/2E 330' TO THE SEC LINE; THENCE EAST OF
 THE SOUTH LINE OF SEC 25, 3211.56' TO THE TOWN LINE
 RD THIS DAY LAID ON AND NEAR THE TOWN LINE BETWEEN
 THE TOWNS 4NR11 & 12 EAST. COURSES GIVEN
 ACCORDING TO THE TRUE MERIDIAN VARIATION OF NEEDLE
 7-3/4.
 1878 RUGER VOL 2 PG 242 FD HH STONE. 2640.66 TO S 1/4
 COR SEC 26.
 1971 LEE VOL 4 PG 502 FD HH ON END 10X10X24 REFERENCED
 SAME.
 1977 BARNES VOL 5 PG 251 FD NOTHING. SET PK FROM TIES.
 REFERENCED SAME.
 1977 BARNES VOL 5 PG 267 2652.89 TO W 1/4 COR SEC 25 &
 2680.20 TO S 1/4 COR SEC 25
 1977 BARNES VOL 5 PG 274 2680.20 TO S 1/4 COR SEC 25 &
 5360.40 TO SE COR SEC 25
 2007 RIESOP V-21 FD ALUM. & REFERENCED SAME.
 2008 RIESOP CSM VOL 31 PG 218 ALUM. MON. N89-17-10E
 2680.19 TO ALUM @ S 1/4 COR SEC 25, N00-22-32W
 2652.97 TO PK SET FROM TIES @ W 1/4 COR SEC 25.

I USED MY 1977 & 1982 OBSERVATIONS TO THE ALUM. MON.

C) Was the corner restored through acceptance of (1) an obliterated evidence location, or, (2) a found perpetuated location?

ACCEPTED ALUM. MON.

D) Describe any material discrepancy between the location of the corner as restored or reestablished and the location of that corner as previously restored or reestablished by distance and direction. Show the discrepancy on the plan view drawing under (a), above. Show the distances between the corner as previously restored or reestablished and (1) the corner as restored or reestablished, and (2) to at least 4 of the witness monuments shown on the drawing in (a), above.

NONE

(E) Was the corner reestablished through lost corner proportionate methods? If so, show the method, including the directions and distances to other public land survey corners used as evidence or used for proportioning the corner location.

NO

I, **Donald Barnes**, hereby certify that the corner location as identified by the corner code index was determined by me under my direction and control and that this U.S. Public Land Survey Monument Record is correct and complete to the best of my knowledge and belief.

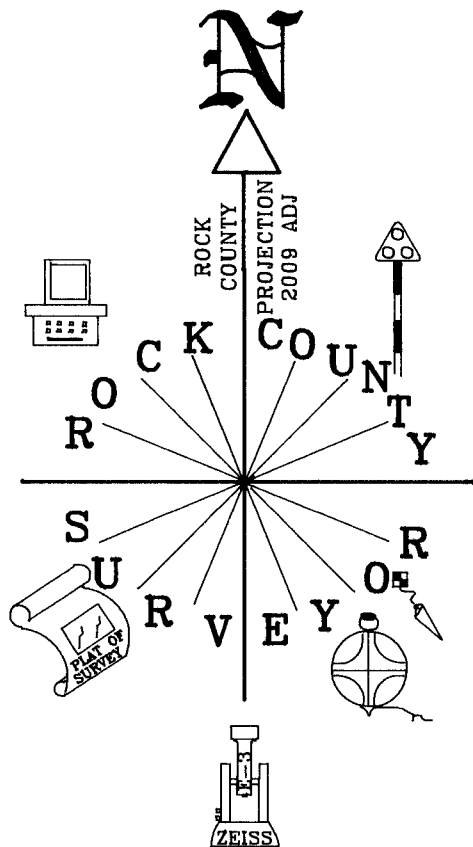

 Seal

Emboss

3-18-2009

SHEET 2 OF 3

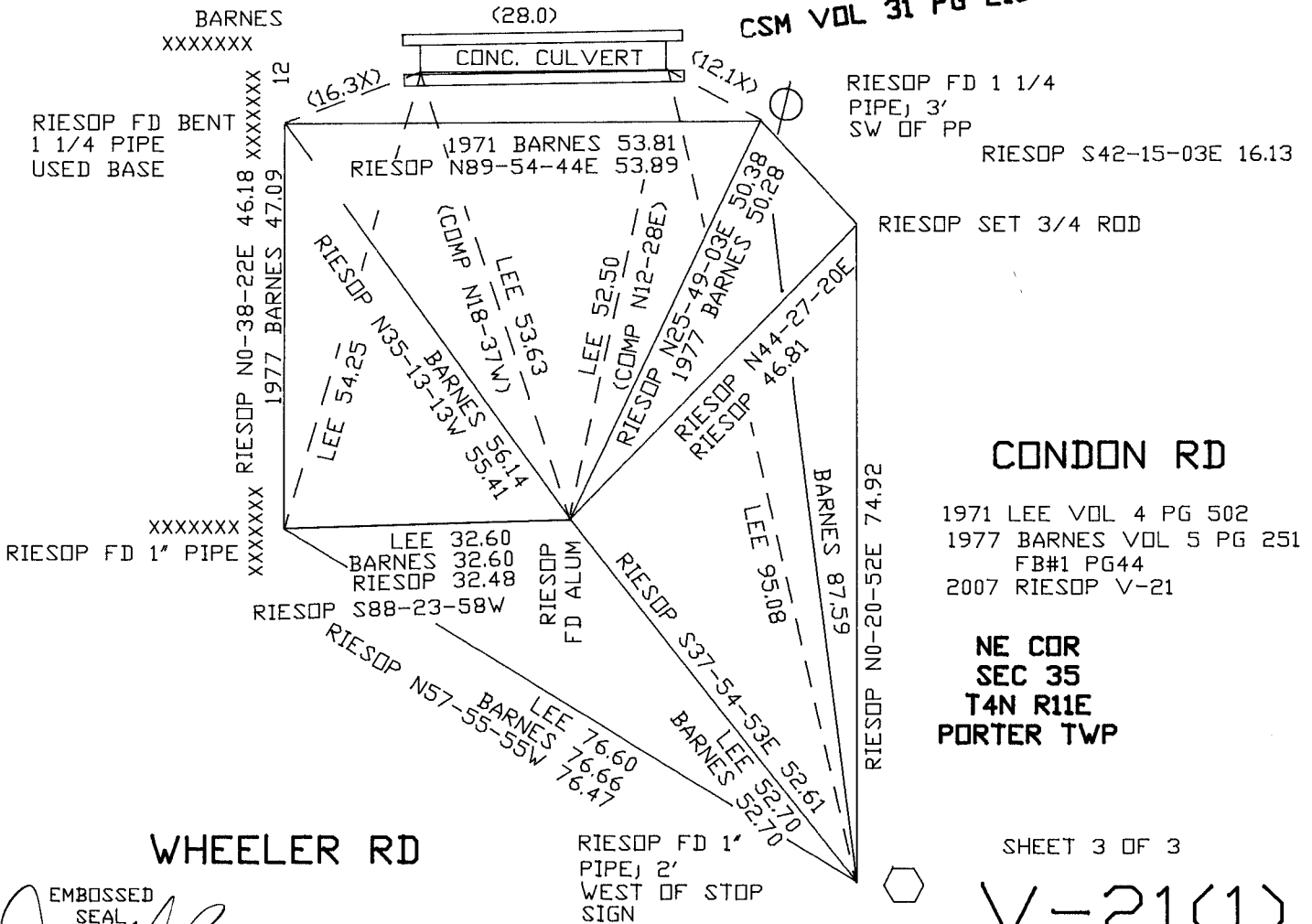
CORNER CODE **V-21(1)**
 A.E. 7.08 REQUIREMENT



NOT TO SCALE

FOX RD

CSM VOL 31 PG 218



EMBOSSED SEAL
Donald Barnes

3-18-2009