

Paper weight-110# (minimum)

Black nonfading ink required

# U.S. PUBLIC LAND SURVEY MONUMENT RECORD

For Public Land Survey Corners In:

WI ADMINISTRATIVE CODE A-E 7.08 REQUIREMENT

T. 4 N. R. 11 E. 4th P.M.

REV 10/23/2004

USMONREC.DWG

CORNER CODE INDEX

A	1	2	3	4	5	6	7	8	9	10	11	12	13	14	15	16	17	18	19	20	21	22	23	24	25	A
B		6				5					4				3					2					1	B
C																										C
D																										D
E																										E
F																										F
G																										G
H																										H
J																										J
K																										K
L																										L
M																										M
N																										N
O																										O
P																										P
Q																										Q
R																										R
S																										S
T																										T
U																										U
V																										V
W																										W
X																										X
Y																										Y
Z																										Z

Porter TWP  
ROCK COUNTY WI

IF AVAILABLE  
ROCK COUNTY COORDINATES PREFERRED

North \_\_\_\_\_ Elev. \_\_\_\_\_

East \_\_\_\_\_

Hor. Datum \_\_\_\_\_ Vert. Datum \_\_\_\_\_

LATITUDE \_\_\_\_\_ ELLIPS. HT. \_\_\_\_\_

LONGITUDE \_\_\_\_\_

NAD83(91) \_\_\_\_\_ NETWORK ADJ. YR \_\_\_\_\_

GPS (X) \_\_\_\_\_ TRAVERSE (X) \_\_\_\_\_

BASED ON THE FOLLOWING CONTROL:  
\_\_\_\_\_

PLACE MONUMENT SYMBOL  AT PROPER LOCATION ON ABOVE INDEX

CORNER MONUMENT

WITNESS MONUMENT

BEARINGS ARE BASED ON: \_\_\_\_\_

FIELD BOOK \_\_\_\_\_ PAGE # \_\_\_\_\_

SHEET 1 OF 4

SHOW A PLAN VIEW DRAWING DEPICTING THE CORNER MONUMENT AND SURROUNDING PHYSICAL FEATURES, INCLUDING THE EXCAVATION AREA AND DEPTH.

PLANNING & ZONING COMMITTEE ADOPTED THIS FORM ON 12/2/1982

CORNER CODE L-21(1)

PO559

E1/4CORSEC14

(B) Describe any record evidence, monument evidence, occupational evidence, testimonial evidence or any other material evidence you considered, and whether the monument was found or placed.

1833 HARRISON (OCT 29TH) T4N R11E 4<sup>TH</sup> MER. NORTH  
 BET. 13 & 14

346.50 CAT-FISH CREEK CR S.E. SET MEANDER POST  
 BURR OAK 10 S10W 55.44'; BURR OAK 18 N77W  
 15.84'

570.90 LEAVE CAT-FISH SET MEANDER POST {RED OAK  
 12 S75E 134.64'

1307.46 CAT-FISH CRS S.W. SET MEANDER POST {RED  
 OAK 12 S25E 77.22'

1534.50 LEAVE CAT-FISH & SET MEANDER POST {BURR  
 OAK 12 N15E 66.66'; BURR OAK 12 N60W  
 43.56'

2640.0 SET POST FOR COR TO QUARTER SEC {BURR OAK  
 12 S25W 35.64'; BURR OAK 18 N10W 43.56'

2854.50 CAT-FISH CRS S.E. SET MEANDER POST {BURR  
 OAK 18 S22E 29.70'; BURR OAK 20 N81W  
 30.36'

3127.08 LEAVE CAT-FISH SET MEANDER POST {BURR OAK  
 12 N70E 18.48'; BURR OAK 8 N19W 33.66'

3678.18 TO A BROOK 6.6' CRS S.W

4654.98 ENTER PRAIRIE

5280.0 SET POST & RAISED MOUND FOR COR TO SECS  
 11,12,13,14 LAND ROLLING 2<sup>ND</sup> RATE TIMBER  
 ??? BURR OAK UNDERGROWTH HAZEL, ??,  
 GRASS

1851 STEBBINS PORTER TWP RD REC BK 1 PG 5 BEGINNING AT  
 A POINT 33' SOUTH OF THE 1/4 POST ON THE EAST LINE OF  
 SEC 13, T4NR11E; THENCE WEST PARALLEL WITH THE 1/4  
 LINE RUNNING THROUGH SAID SECTION 4569.84'; THENCE  
 N11W 858'; THENCE N88W 757.68' TO THE EAST END OF  
 RAYMONDS MILL DAM; THENCE COMMENCING AT THE WEST  
 END OF SAID DAM S7-3/4E 726' TO A POINT ON SAID 1/4  
 LINE 323.40' WEST OF THE 1/4 POST ON THE EAST LINE OF  
 SEC 14&15; THENCE WEST ON SAID LINE AND THE 1/4 LINE  
 OF SEC 15, 8916.6' TO THE NE COR OF THW SW EIGHTY OF  
 SEC 15, T4NR11E AND THE WHOLE LENGTH OF THE RD IS  
 THREE MILES AND 3.96'. COURSES GIVEN ACCORDING TO  
 THE TRUE MERIDIAN VARIATION OF NEEDLE 7 3/4  
 HARRISON STEBBINS-SURVEYOR

1855 PORTER TWP RD REC BK 1 PG 6 & 7 BEGINNING AT THE 1/4  
 POST ON THE EAST LINE OF SEC 13 T4N R1E; THENCE  
 WEST ON THE CENTER LINE OF SEC 13; 4540.8'; THENCE  
 S6E 419.76'; THENCE S40W 396' DOWN A RAVINE; THENCE  
 N82W 198' ACROSS THE CATFISH RIVER; THENCE N15W  
 770.88' TO THE CENTER LINE OF SEC 13; THENCE WEST ON  
 SAID LINE 122' TO 1/4 POST ON WEST LINE OF SEC 13;  
 THENCE WEST ON THE CENTER LINE OF SEC 14, 2640' TO  
 CENTER OF SEC 14; THENCE NORTH ON THE N & S CENTER  
 LINE OF SEC 14 2057.88' TO RIVER; THENCE N44W 808.5'  
 TO NORTH LINE OF SEC 14; THENCE WEST ON THE NORTH  
 LINE OF 14, 1897.5' TO NW COR OF 14, THENCE SOUTH 33';  
 THENCE WEST PARALLEL TO NORTH LINE OF SEC 15, 3960'  
 TO RD RUNNING NORTH AND SOUTH THROUGH SEC 15;  
 AND NOW THEREFORE WE THE SUPERVISORS """" DELCARE  
 THE ABOVE DESCRIBED RD TO BE A PUBLIC HIGHWAY 66'  
 WIDE """". """" DECLARE THE ABOVE DESCRIBED ROAD TO  
 BE A PUBLIC HIGHWAY 66' WIDE,

1857 STEBBIN PORTER TWP RD REC BK 1 PG 9 BEGINNING AT THE  
 1/4 POST ON THE SEC LINE BETWEEN SEC 11 & 12 T4R11;  
 THENCE SOUTH ON THE LINE 2640' TO SE COR OF SEC 11;  
 THENCE S15-1/2E 785.4' TO A STAKE; THENCE S6W 669.24'

SHEET 1 OF 4

CORNER CODE L-21(1)

*Dwight Barnes*

Nov 5, 2009

TO BLACK OAK ON BANK OF SPRING BROOK; THENCE S5E 907.5' TO THE CATFISH RIVER; THENCE S47W 233.64' TO CENTER OF A RD ON THE E & W CENTER LINE OF SEC 14, 15,576' WEST OF THE 1/4 POST ON THE EAST LINE OF SEC 14; THENCE NORTH ON SAID CENTER LINE 1131.24' TO A POINT 33' EAST OF THE LINE THAT DIVIDED THE EAST 1/2 OF SEC 14; THENCE SOUTH PARALLEL WITH AND 33' FROM THE LINE DIVIDING THE SE 1/4 OF SEC 14 AND THE NE 1/4 OF SEC 23, 5280' INTERSECTING THE ROAD RUNNING E & W THROUGH SECTION 23 AND THE WHOLE LENGTH OF THE RD IS 11,779.02' THE COURSES ARE GIVEN ACCORDING TO THE TRUE MERIDIAN. VARIATION OF NEEDLE 8 . " A PUBLIC HIGHWAY 66' WIDE. H. STEBBINE, RODMAN IDE, E.D. BARNARD{SUPERVISORS OF PORTER.

- 1868 PORTER TWP RD REC BK 2 PG 8 BEGINNING AT THE QUARTER POST OF SEC LINE BETWEEN SECTIONS 11 & 12 T4 AND R11; THENCE SOUTH ON SAID LINE 2640' TO THE SE COR OF SEC 11; THENCE S14E 785.4' TO A STAKE; THENCE S3 1/4E 972.18' TO A STAKE; THENCE S80W 122'; THENCE S40W 231'; THENCE S7E 198'; THENCE S46E 280.5'; THENCE S45W ACROSS THE CATFISH RIVER 416.46' TO A POINT ON THE EAST & WEST QUARTER LINE OF SEC 14, 58.74' WEST OF THE QUARTER POST BETWEEN SEC 13 & 14. THE LINE OF SAID SURVEY TO BE THE CENTER OF SAID HIGHWAY. THE SAME IS ESTABLISHED 66' IN WIDTH
- 1868 PORTER TWP RD REC BK 2 PG 9 WHEREAS A CERTAIN PORTION OF THE HIGHWAY RUNNING THROUGH THE MIDDLE OF SEC 13 OF SAID TOWN EAST AND WEST HAS BEEN SHUT UP AND THE SAID SUPERVISERS HAVE DETERMINED TO RUN SAID RD FROM THE BLUFF ON THE EAST BANK OF SAID CATFISH RIVER ON THE EAST AND WEST QUARTER LINE AS HEREINAFTER DESCRIBED, BEGINNING AT A POINT ON THE EAST AND WEST QUARTER LINE ON SAID SECTION 703.56' EAST OF THE QUARTER POST ON WEST SIDE OF SAID SECTION AND RUNNING THENCE N25 1/2W 990' TO THE CENTER OF THE HIGHWAY CROSSING THE CATFISH RIVER AT THE BRIDGE ON SAID SECITON, SAID LINE TO BE THE CENTER OF THE HIGHWAY AND TO BE 66' WIDE.
- 1933 ELY PLAT 7 PG 66 STATES NOTHING ABOUT MON. NORTH 96 TO SOUTH R/W LINE, EAST 20 TO LOT COR, EAST 275.3 TO RIVER.
- 1971 SCHROEDER CSM 2-165 STATES NOTHING ABOUT MON.
- 1978 KARNs VOL 5 PG 465 FD 3" DIAM CAST IRON CAP MARKED "COUNTY SURVEYOR" BETWEEN 2 YELLOW R/W POSTS. 2657.26 TO NW COR SEC 13
- 1978 KARNs CSM VOL 8 PG 152 GOV. CORNER. STATES NOTHING ABOUT MON.
- 1978 LEE CSM VOL 8 PG 202 CI. NORTH 2657.34 TO FD 1" PIPE @ NE COR SEC 14, S88-47-35W ALONG E/W 1/4 LINE OF SEC 14.
- 1991 WOODMAN VOL 6 PG 418 S89-22-27W 2723.96 TO INT OF 1/4 LINES, 5447.77 TO W 1/4 COR SEC 14.
- 1991 WOODMAN L-21FD CAST IRON MON. & R/W POST. REFERENCED SAME. SOUTH OF E/W FENCE LINE NEAR 24" OAK
- 1992 COMBS CSM VOL 15 PG 418 FD CI. 2657.34 TO IP @ NW COR SEC 13.
- 1999 COMBS #7381 CI MON.

*Donald Barnes*  
NOV 5 2009

PO559 E1/4CORSEC14

2007 RIESOP GSM VOL 31 PG 12 FD HARRISON C.I. S89-30-04W  
2724.16 TO SET REROD @ CENTER OF SEC 14, S89-30-04W  
5448.14 TO PINCHED 1" PIPE @ W 1/4 COR SEC 14, N00-  
04-29E 5299.42 TO FD ALUM. @ N 1/4 COR SEC 14.

FD CI MON. CI IS 0.19' EAST OF LINE BETWEEN NE & SE CORNERS  
OF SEC 14.

C) Was the corner restored through acceptance of (1) an obliterated evidence location, or, (2) a found perpetuated location?

DID NOT FIND A RECORD OF HOW OR WHO PLACED THE CAST IRON  
MON. IT IS IN HARMONY WITH THE ORIGINAL SURVEY AND THE E/W  
FENCE. ACCEPTED FD MON.

D) Describe any material discrepancy between the location of the corner as restored or reestablished and the location of that corner as previously restored or reestablished by distance and direction. Show the discrepancy on the plan view drawing under (a), above. Show the distances between the corner as previously restored or reestablished and (1) the corner as restored or reestablished, and (2) to at least 4 of the witness monuments shown on the drawing in (a), above.

(E) Was the corner reestablished through lost corner proportionate methods? If so, show the method, including the directions and distances to other public land survey corners used as evidence or used for proportioning the corner location.

I, **Donald Barnes**, hereby certify that the corner location as identified by the corner code index was determined by me under my direction and control and that this U.S. Public Land Survey Monument Record is correct and complete to the best of my knowledge and belief.

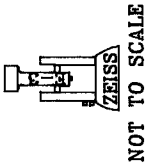
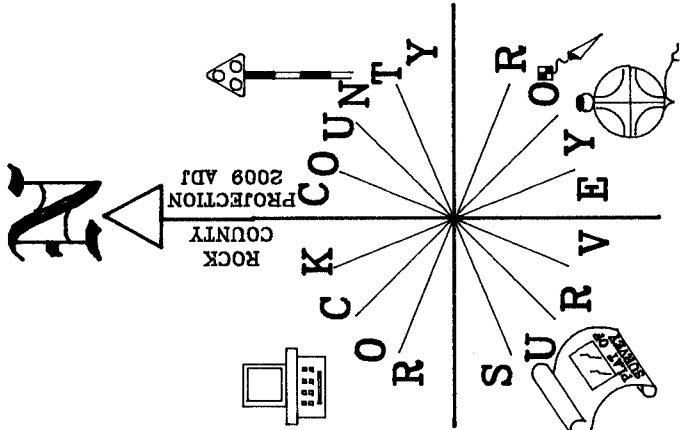
Seal  
*Donald Barnes*  
Emboss

SHEET 3 OF 4

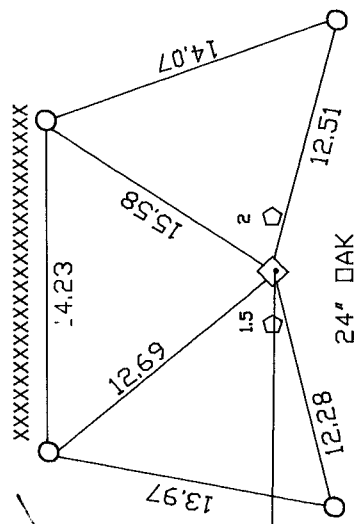
CORNER CODE **L-21(1)**

NOV 5, 2009

A.E. 7.08 REQUIREMENT



- ◇ FOUND 4" DIAM. CAST IRON MON.
- ◊ R/W POST
- 1"X24" IRON PIPE



FIELD LINE

TIES BY JIM WOODMAN

CALEDONIA RD

DRIVEWAY

N88-50-36E 450.08

E 1/4 COR  
SEC 14  
PORTER TWP  
T4N R11E

S53-41-40W 16.643'  
ANT. 1.81-5L  
S22-56-25W 21.054'  
FD RERDD STA #346  
4-5'

*David*  
EMBOSSSED SEAL  
Nov 5 2009

SHEET 4 OF 4

L-21(1)