

U.S. PUBLIC LAND SURVEY MONUMENT RECORD

For Public Land Survey Corners in:

WI ADMINISTRATIVE CODE A-E 7.08 REQUIREMENT

T. 4N., R. 11E

CORNER CODE INDEX

A	2	3	4	5	6	7	8	9	10	11	12	13	14	15	16	17	18	19	20	21	22	23	24	25
B	6																							
C		5																						
D			4																					
E				3																				
F					2																			
G						1																		
H	1	8	9	10	11	12	13	14	15	16	17	18	19	20	21	22	23	24	25	26	27	28	29	30
I																								
J																								
K	18	17	16	15	14	13	12	11	10	9	8	7	6	5	4	3	2	1						
L																								
M																								
N																								
O																								
P	19	20	21	22	23	24	25	26	27	28	29	30	31	32	33	34	35	36	37	38	39	40	41	42
Q																								
R																								
S																								
T	30	29	28	27	26	25	24	23	22	21	20	19	18	17	16	15	14	13	12	11	10	9	8	7
U																								
V																								
W																								
X	31	32	33	34	35	36	37	38	39	40	41	42	43	44	45	46	47	48	49	50	51	52	53	54
Y																								
Z																								

PORTER TWP
ROCK COUNTY WI

IF AVAILABLE
ROCK COUNTY COORDINATES PREFERRED

North _____ Elev. _____

East _____

Hor. Datum _____ Vert. Datum _____

LATITUDE _____ ELLIPS. HT. _____

LONGITUDE _____

GPS (X) _____ TRAVERSE (X) _____

BASED ON THE FOLLOWING CONTROL:

PLACE MONUMENT SYMBOL AT PROPER LOCATION ON ABOVE INDEX

CORNER MONUMENT

WITNESS MONUMENT

(a)

BEARINGS ARE BASED ON:

FIELD BOOK _____ PAGE # _____

SHEET 1 OF 3

SHOW A PLAN VIEW DRAWING DEPICTING THE CORNER MONUMENT AND SURROUNDING PHYSICAL FEATURES, INCLUDING THE EXCAVATION AREA AND DEPTH.

PLANNING & ZONING COMMITTEE ADOPTED THE ABOVE FORM ON 12/2/1982

CORNER CODE G-21(1)

Po539

(B) Describe any record evidence, monument evidence, occupational evidence, testimonial evidence or any other material evidence you considered, and whether the monument was found or placed.

- 1833 HARRISON ORIGINAL SURVEY. PLACED A POST AND RAISED A MOUND OF EARTH OF SOD FOR THE CORNER. SHOWS 2640 TO THE NORTHEAST AND SOUTHEAST CORNERS OF SECTION 11.
- 1871 RUBER VOL 2 PG 63 FOUND LIMESTONE & 2 OLD STAKES UNDER IT, ONE VERY MUCH DECAYED, DROVE NEW STAKE DEEP & PUT LIMESTONE ON TOP OF IT 16X7X6 SURROUNDED IT WITH 4 LIMESTONES. USED TO SUBDIVIDE SECTION 12. SHOWS 1322.06 TO THE S 1/16TH CORNER OF THE NW QUARTER OF SECTION 12.
- 1886 RUBER VOL 2 PG 282 FOUND CORNER AS SET BY SELF. USED TO SUBDIVIDE SECTION 11. SHOWS 2743.95 TO THE CENTER OF SECTION 11, 2578.84 TO THE NE CORNER OF SECTION 11; AND 2753.52 TO THE SE CORNER OF SECTION 11. SHOWS A BEND IN THE SECTION LINE AT THE QUARTER CORNER.
- 1965 BATTERMAN JR. VOL 4 PG 223 SET 1" PIPE 3' DEEP WITH 1 L.S. & 4 L.S. SHOWS TIES FOR CORNER. REFERENCE PKs 10.91 SW & 9.49' SE. STATES WORK WAS DONE BY SURVEYOR'S OF W.P. & L. CO.
- 1991 BARNES G-21 FOUND PK AND REFERENCE PIPES

FOUND REFERENCE PIPES. DID NOT FIND PK NOR SET MONUMENT.

C) Was the corner restored through acceptance of (1) an obliterated evidence location, or, (2) a found perpetuated location?

ACCEPTED FOUND PERPETUATED LOCATION.

D) Describe any material discrepancy between the location of the corner as restored or reestablished and the location of that corner as previously restored or reestablished by distance and direction. Show the discrepancy on the plan view drawing under (a), above. Show the distances between the corner as previously restored or reestablished and (1) the corner as restored or reestablished, and (2) to at least 4 of the witness monuments shown on the drawing in (a), above.

(E) Was the corner reestablished through lost corner proportionate methods? If so, show the method, including the directions and distances to other public land survey corners used as evidence or used for proportioning the corner location.

I, Donald Barnes, hereby certify that the corner location as identified by the corner code index was determined by me under my direction and control and that this U.S. Public Land Survey Monument Record is correct and complete to the best of my knowledge and belief.

Seal

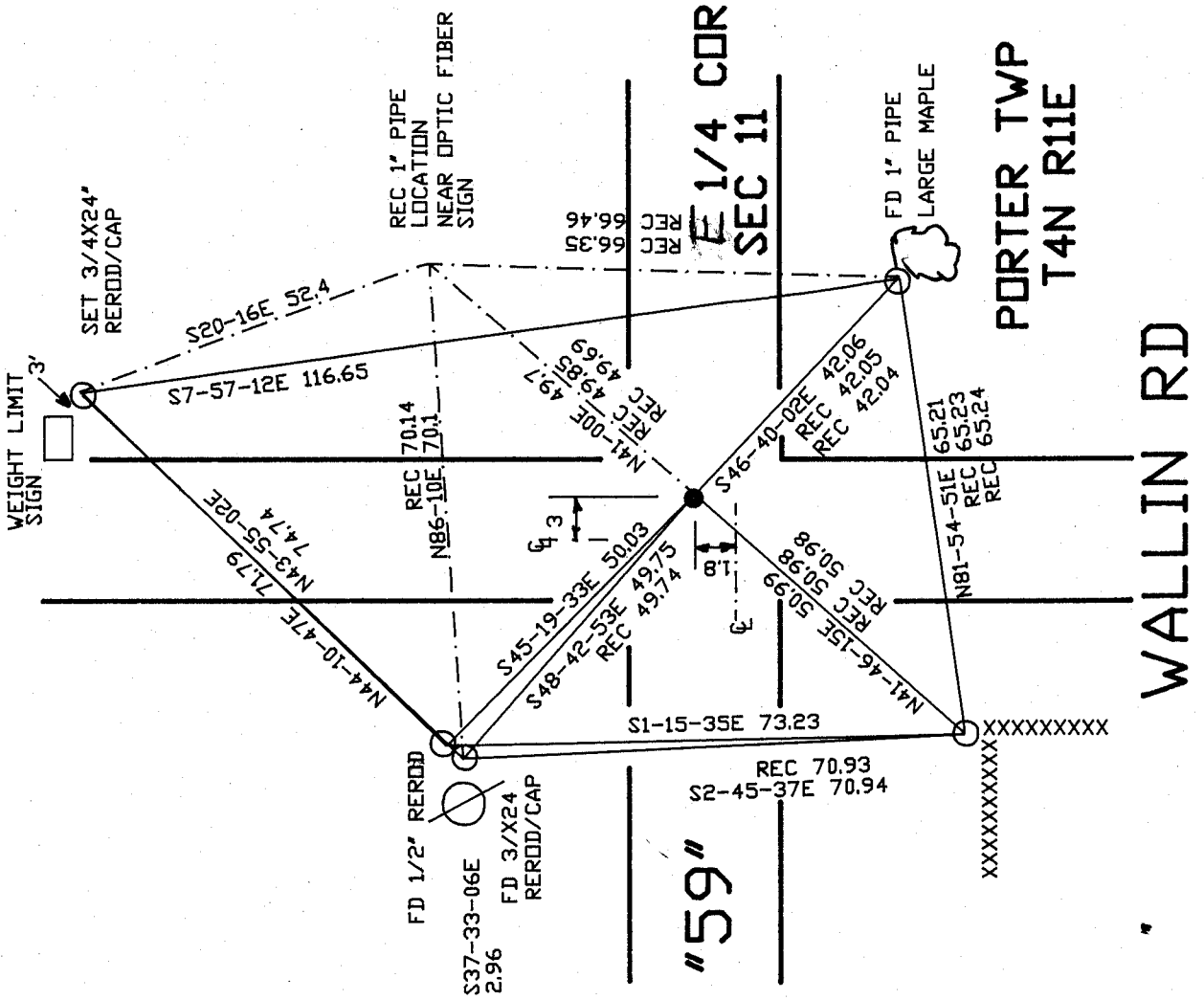
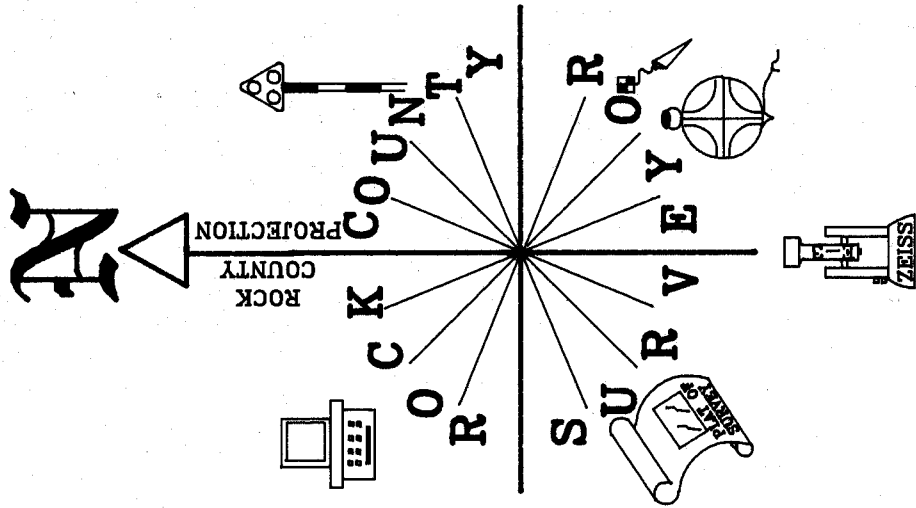
NUMBER OF INCLUDED SHEETS 2

Emboss
Donald Barnes
6-14/01

CORNER CODE

G-21(1)

A-E 7.08 REQUIREMENT



OBSERVATION SHEET #34

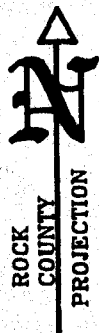
● DID NOT FIND PK
NOR PLACE A MONUMENT.

EMBOSSED
SEAL
Dundee
6/14/01

STH "59"

2 OF 3

G-21(1)



CENTER?

326,134.04 N/S
456,027.94 E/W

FD LARGE NAIL
0.2' DEEP
@ CENTER OF PVMT
& ON LINE N/S
FENCE
DID NOT ACCEPT NOR
REJECT AS CENTER OF
SEC 2

SEC 2
SEC 2

NO-18-19W 2617.12

**N 1/4
COR**

1833 HARRISON 2669.70

323516.96 N/S
456041.89 E/W N89-27-18E 2708.63 323,542.73 N/S
PRD 2709.46 458,750.40 E/W

1886 RUGER VAR 6-34 2707.32
1833 HARRISON 2669.70

NE COR

FD ALUM.

**NW
COR**

1833 HARRISON 2640

PRO IS THE VALUE COMPUTED
FROM THE FOLLOWING RECORD
& MEASURED DISTANCES.

RUGER	MEASURED
5436.42	5441.06
2722.50	2725.72
2722.50	2723.47
2753.52	2755.88
2578.83	2580.69
2707.32	2708.63
2628.78	2631.43
TOTAL	21,549.87
	21,566.88

FD L.S.
SET POLY. MON.
& CARSONITE

COUNTY COORDINATES

N88-23-37E 5441.06
1886 RUGER 5436.42
N88-23-26E 2746.14
PRD 2746.12
1886 RUGER 2743.95

1833 HARRISON 2640
1886 RUGER VAR 6-30 2578.83
N1-21-35W 2580.69
PRD 2580.86

320,962.77 N/S
458,811.64 E/W

FD CONC.
MON.

**W 1/4
COR**

320,810.23 N/S
453,372.71 E/W

NO-03-33E 2657.17

SEC 11
SEC 11

N88-23-47E 2694.93
PRD 2694.60
1886 RUGER 2692.47
1886 RUGER VAR 6-35

320885.64 N/S
456066.58 E/W

CENTER

NO-36-48W 2706.11

318,179.69
456,095.55 E/W

PORTER TWP
TAN R11E

**E 1/4
COR**

FD TIES
1833 HARRISON 2640
1886 RUGER VAR 5-35 2753.52
1991 BARNES NO-01-47W 2755.93
NO-09-02W 2755.88
PRD 2755.69

318,153.06
453,369.96

SW COR

USED 1991
OBSERVATIONS
(FD R/R)

1833 HARRISON 2692.80
1886 RUGER VAR 5-847 2722.50
1991 BARNES N89-33-35E 2725.70
N89-26-25E 2725.72
PRD 2724.65

**S 1/4
COR**

1833 HARRISON 2640
1886 RUGER VAR 5-847 2722.50
1991 BARNES N89-32-55E 2723.42
N89-25-39E 2723.47
PRD 2724.65

SE COR

FD PIPE
318,206.90 N/S
458,818.88 E/W

Donald Barnes
6-14-01

3 of 3

G-21(1)