

Paper weight-110# (minimum)

Black nonfading ink required

# U.S. PUBLIC LAND SURVEY MONUMENT RECORD

For Public Land Survey Corners In:

WI ADMINISTRATIVE CODE A-E 7.08 REQUIREMENT

T. 4 N. R. 11 E. 4th P.M.

REV 10/23/2004

USMONREC.DWG

CORNER CODE INDEX

PORTER TWP

ROCK COUNTY WI

IF AVAILABLE

ROCK COUNTY COORDINATES PREFERRED

A	1	2	3	4	5	6	7	8	9	10	11	12	13	14	15	16	17	18	19	20	21	22	23	24	25	A
B																										B
C																										C
D																										D
E																										E
F																										F
G																										G
H																										H
J																										J
K																										K
L																										L
M																										M
N																										N
O																										O
P																										P
Q																										Q
R																										R
S																										S
T																										T
U																										U
V																										V
W																										W
X																										X
Y																										Y
Z																										Z

North \_\_\_\_\_ Elev. \_\_\_\_\_

East \_\_\_\_\_

Hor. Datum \_\_\_\_\_ Vert. Datum \_\_\_\_\_

LATITUDE \_\_\_\_\_ ELLIPS. HT. \_\_\_\_\_

LONGITUDE \_\_\_\_\_

NAD83(91) \_\_\_\_\_ NETWORK ADJ. YR \_\_\_\_\_

GPS (X) \_\_\_\_\_ TRAVERSE (X) \_\_\_\_\_

BASED ON THE FOLLOWING CONTROL:

\_\_\_\_\_

◆ CORNER MONUMENT

○ WITNESS MONUMENT

BEARINGS ARE BASED ON: \_\_\_\_\_

FIELD BOOK \_\_\_\_\_ PAGE # \_\_\_\_\_

SHEET 1 OF 2

SHOW A PLAN VIEW DRAWING DEPICTING THE CORNER MONUMENT AND SURROUNDING PHYSICAL FEATURES, INCLUDING THE EXCAVATION AREA AND DEPTH.

PLANNING & ZONING COMMITTEE ADOPTED THIS FORM ON 12/2/1982

CORNER CODE A-12(1)

PO2505 N1/16COR-NE1/4-SEC4

(B) Describe any record evidence, monument evidence, occupational evidence, testimonial evidence or any other material evidence you considered, and whether the monument was found or placed.

1874 RUGER VOL 2 PG 129 SET HH 24X9X8. CALLS FOR  
1302.84 TO THE NE AND N 1/4 CORNERS OF SECTION 4.

1973 LEE VOL 5 PG 45 DUG AND FOUND HH 24X9X8 SET BY  
RUGER. REFERENCED SAME.

1993 BARNES A-12 FOUND 1" PIPE 0.3' DEEP AND REFERENCE  
PIPES.

USED REC TIES. SET PK 3 N OF GEN PVMT PRIOR TO MEASURING TO  
REF MON. PK IS NOT THE COR.

C) Was the corner restored through acceptance of (1) an obliterated evidence location, or, (2) a found  
perpetuated location?

ACCEPTED LEE'S POSITION. RUGER'S POSITION FITS EXCELLENT  
WITH ALL OTHER CORNERS ON LINE.

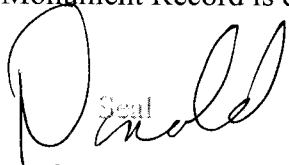
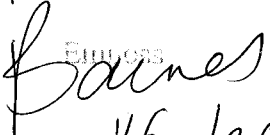
D) Describe any material discrepancy between the location of the corner as restored or reestablished  
and the location of that corner as previously restored or reestablished by distance and direction. Show  
the discrepancy on the plan view drawing under (a), above. Show the distances between the corner as  
previously restored or reestablished and (1) the corner as restored or reestablished, and (2) to at least 4  
of the witness monuments shown on the drawing in (a), above.

NONE

(E) Was the corner reestablished through lost corner proportionate methods? If so, show the method,  
including the directions and distances to other public land survey corners used as evidence or used for  
proportioning the corner location.

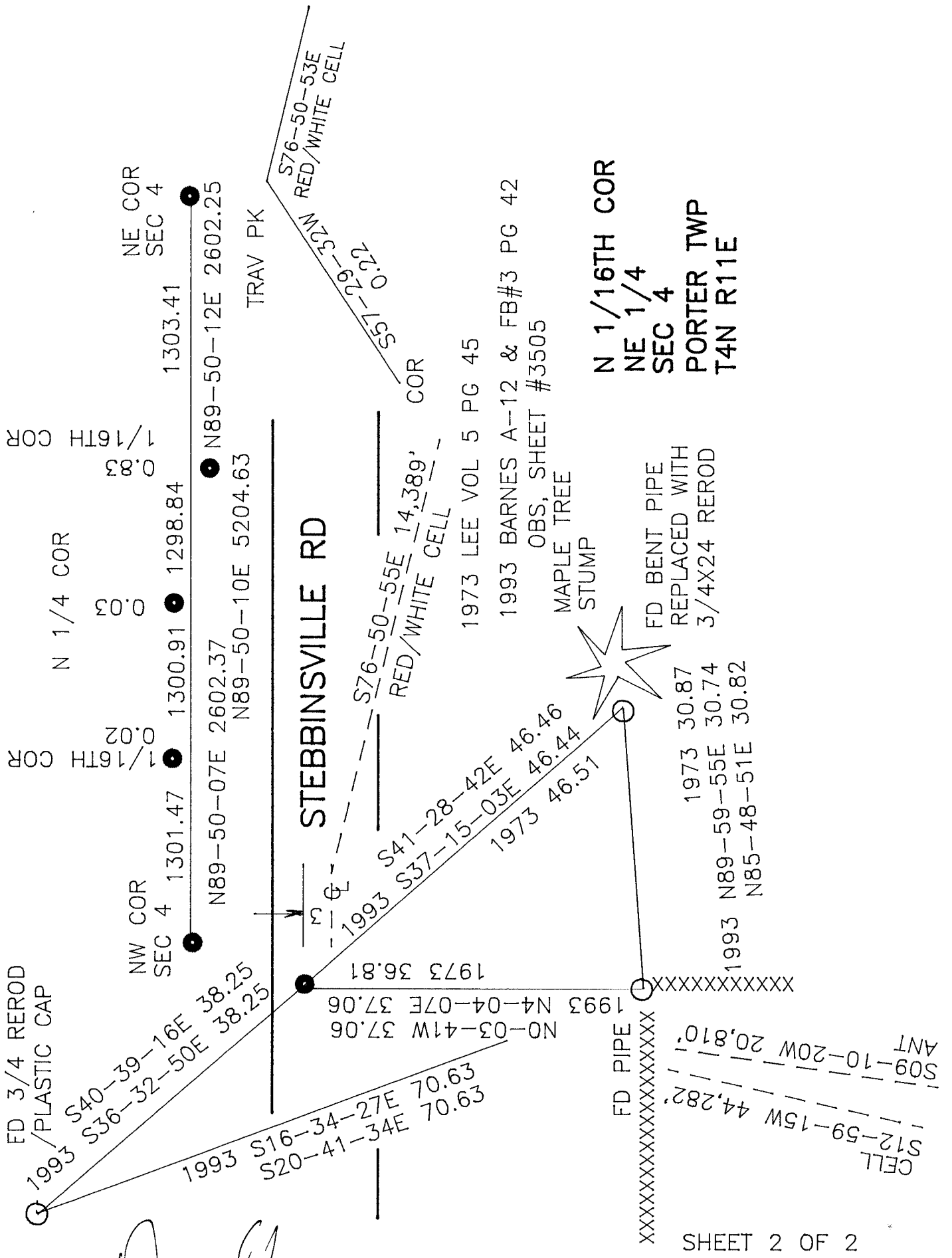
NO

I, **Donald Barnes**, hereby certify that the corner location as identified by the corner code index  
was determined by me under my direction and control and that this U.S. Public Land Survey  
Monument Record is correct and complete to the best of my knowledge and belief.

  
Seal  
  
Barnes  
3/16/2009

SHEET 1 OF 2

CORNER CODE **A-12(1)**  
A.E. 7.08 REQUIREMENT



**N 1/16TH COR**  
**NE 1/4**  
**SEC 4**  
**PORTER TWP**  
**T4N R11E**

*James Barnes*  
 EMBOSSED SEAL  
 3/16/2009

SHEET 2 OF 2

**A-12(1)**